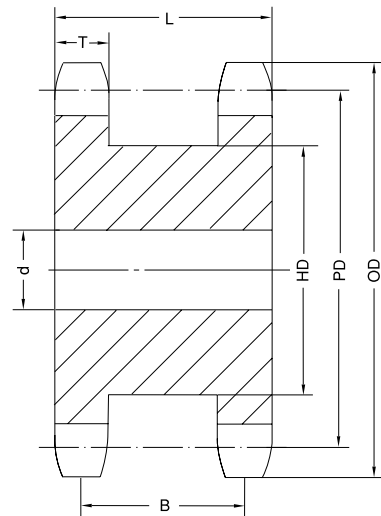
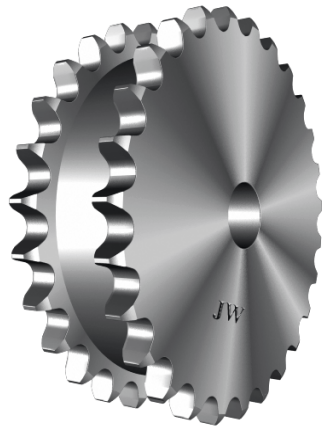


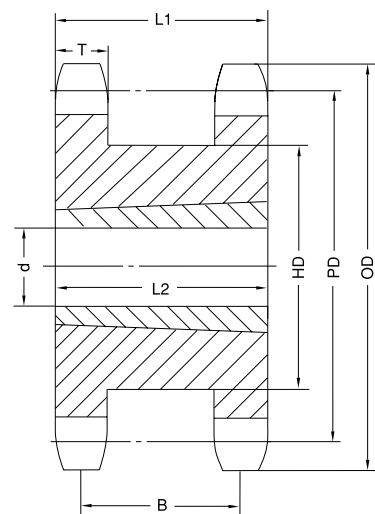
DOUBLE-SINGLE SPROCKETS

Double-Single Type A



Type A

Double-Single Taper-Bushed



Type A1



DOUBLE-SINGLE SPROCKETS

Double-Single Type A

Pitch	No. of Teeth	Part No.	OD	PD	Type	d		L	B	HD	T	App. Wt. (Lbs.)
						Min.	Max.					
DS40	15	DS40A15H	2.650	2.405	A	1/2	1-1/4	1-13/32	1-1/8	1-13/16	0.284	1.2
	16	DS40A16H	2.810	2.563	A	1/2	1-1/4	1-13/32	1-1/8	2	0.284	1.4
	17	DS40A17H	2.980	2.721	A	1/2	1-5/16	1-13/32	1-1/8	2-1/8	0.284	1.6
	18	DS40A18H	3.140	2.879	A	1/2	1-1/2	1-13/32	1-1/8	2-5/16	0.284	1.8
	19	DS40A19H	3.300	3.038	A	5/8	1-11/16	1-13/32	1-1/8	2-1/2	0.284	2.2
	20	DS40A20H	3.460	3.196	A	5/8	1-3/4	1-13/32	1-1/8	2-5/8	0.284	2.6
	21	DS40A21H	3.620	3.355	A	5/8	1-3/4	1-13/32	1-1/8	2-25/32	0.284	2.9
	22	DS40A22H	3.780	3.513	A	5/8	1-13/16	1-13/32	1-1/8	2-15/16	0.284	3.0
	23	DS40A23H	3.940	3.672	A	5/8	2-1/16	1-13/32	1-1/8	3-3/32	0.284	3.5
24	DS40A24H	4.100	3.831	A	5/8	2-1/4	1-13/32	1-1/8	3-17/64	0.284	4.0	
DS50	15	DS50A15H	3.320	3.006	A	5/8	1-1/2	1-21/32	1-5/16	2-3/8	0.343	2.1
	16	DS50A16H	3.520	3.204	A	5/8	1-11/16	1-21/32	1-5/16	2-1/2	0.343	2.4
	17	DS50A17H	3.720	3.401	A	5/8	1-3/4	1-21/32	1-5/16	2-11/16	0.343	2.9
	18	DS50A18H	3.920	3.599	A	5/8	1-7/8	1-21/32	1-5/16	2-57/64	0.343	3.3
	19	DS50A19H	4.120	3.797	A	5/8	2-1/16	1-21/32	1-5/16	3-5/64	0.343	3.7
	20	DS50A20H	4.320	3.995	A	5/8	2-1/4	1-21/32	1-5/16	3-9/32	0.343	4.2
	21	DS50A21H	4.520	4.194	A	5/8	2-1/4	1-21/32	1-5/16	3-31/64	0.343	4.8
	22	DS50A22H	4.720	4.392	A	5/8	2-7/16	1-21/32	1-5/16	3-11/16	0.343	5.3
	23	DS50A23H	4.920	4.590	A	5/8	2-5/8	1-21/32	1-5/16	3-57/64	0.343	5.8
24	DS50A24H	5.120	4.788	A	5/8	2-3/4	1-21/32	1-5/16	4-5/64	0.343	6.3	
DS60	13	DS60A13H	3.490	3.134	A	3/4	1-1/4	1-15/16	1-31/64	2-11/32	0.459	2.6
	14	DS60A14H	3.740	3.371	A	3/4	1-5/16	1-15/16	1-31/64	2-9/16	0.459	3.2
	15	DS60A15H	3.980	3.608	A	3/4	1-1/2	1-15/16	1-31/64	2-7/8	0.459	3.8
	16	DS60A16H	4.220	3.845	A	3/4	1-11/16	1-15/16	1-31/64	3-3/64	0.459	4.5
	17	DS60A17H	4.460	4.082	A	3/4	1-3/4	1-15/16	1-31/64	3-1/4	0.459	5.3
	18	DS60A18H	4.700	4.319	A	3/4	1-7/8	1-15/16	1-31/64	3-1/2	0.459	6.5
	19	DS60A19H	4.950	4.557	A	3/4	2-1/16	1-15/16	1-31/64	3-45/64	0.459	6.8
20	DS60A20H	5.190	4.794	A	3/4	2-1/4	1-15/16	1-31/64	3-61/64	0.459	7.0	
21	DS60A21H	5.430	5.033	A	3/4	2-3/4	1-15/16	1-31/64	4-3/16	0.459	7.5	
DS80	13	DS80A13H	4.660	4.179	A	1	2	2-3/16	1-5/8	3-1/64	0.575	6.5
	14	DS80A14H	4.980	4.494	A	1	2-1/4	2-3/16	1-5/8	3-11/32	0.575	7.7
	15	DS80A15H	5.300	4.810	A	1	2-3/8	2-3/16	1-5/8	3-13/16	0.575	9.1
	16	DS80A16H	5.630	5.126	A	1	2-11/16	2-3/16	1-5/8	4	0.575	9.5
	17	DS80A17H	5.950	5.442	A	1	2-13/16	2-3/16	1-5/8	4-5/16	0.575	10.8
	18	DS80A18H	6.270	5.759	A	1	3-1/8	2-3/16	1-5/8	4-41/64	0.575	12.1
	19	DS80A19H	6.590	6.076	A	1	3-1/4	2-3/16	1-5/8	4-61/64	0.575	12.8
	20	DS80A20H	6.910	6.392	A	1	3-1/2	2-3/16	1-5/8	5-9/32	0.575	14.0
	21	DS80A21H	7.240	6.710	A	1	3-3/4	2-3/16	1-5/8	5-19/32	0.575	16.5
22	DS80A22H	7.560	7.027	A	1	3-7/8	2-3/16	1-5/8	5-59/64	0.575	18.4	
DS100	13	DS100A13H	5.820	5.223	A	1	2-1/2	2-11/16	2	3-25/32	0.692	11.2
	14	DS100A14H	6.230	5.617	A	1-1/4	2-3/4	2-11/16	2	4-3/16	0.692	13.5
	15	DS100A15H	6.630	6.012	A	1-1/4	3-1/16	2-11/16	2	4-19/32	0.692	16.8
	16	DS100A16H	7.030	6.407	A	1-1/4	3-1/4	2-11/16	2	4-1/2	0.692	19.3
	17	DS100A17H	7.440	6.803	A	1-1/4	3-5/8	2-11/16	2	4-29/32	0.692	21.5
	18	DS100A18H	7.840	7.198	A	1-1/4	3-3/4	2-11/16	2	5-9/32	0.692	23.0
	19	DS100A19H	8.240	7.595	A	1-1/4	4-3/16	2-11/16	2	6-13/64	0.692	25.0
	20	DS100A20H	8.640	7.991	A	1-1/4	4-3/16	2-11/16	2	6-39/64	0.692	26.5
21	DS100A21H	9.040	8.387	A	1-1/4	5-1/4	2-11/16	2	7	0.692	29.0	

H - Denotes hardened teeth.

DOUBLE-SINGLE SPROCKETS

Double-Single Taper-Bushed

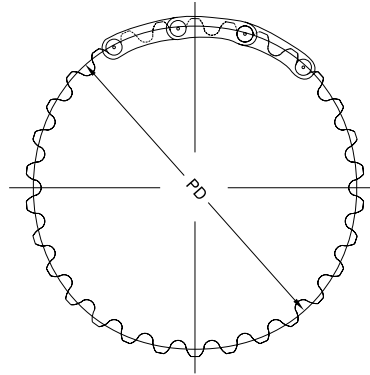
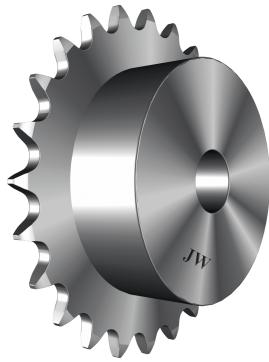
Pitch	No. of Teeth	Part No.	Bushing	OD	PD	Type	d		L1	L2	B	HD	T	App. Wt. (Lbs.)
							Min.	Max.						
DS40	19	DS40ATB19H	1215	3.300	3.038	A1	1/2	1-1/4	1-13/32	1-1/2	1-1/8	2-1/2	0.284	1.1
	20	DS40ATB20H	1215	3.460	3.196	A1	1/2	1-1/4	1-13/32	1-1/2	1-1/8	2-5/8	0.284	1.3
	21	DS40ATB21H	1615	3.620	3.355	A1	1/2	1-5/8	1-13/32	1-1/2	1-1/8	2-25/32	0.284	1.3
	23	DS40ATB23H	1615	3.940	3.672	A1	1/2	1-5/8	1-13/32	1-1/2	1-1/8	3-3/32	0.284	1.5
	24	DS40ATB24H	1615	4.100	3.831	A1	1/2	1-5/8	1-13/32	1-1/2	1-1/8	3-17/64	0.284	1.7
DS50	17	DS50ATB17H	1615	3.720	3.401	A1	1/2	1-5/8	1-21/32	1-1/2	1-5/16	2-11/16	0.343	1.8
	18	DS50ATB18H	1615	3.920	3.599	A1	1/2	1-5/8	1-21/32	1-1/2	1-5/16	2-57/64	0.343	2.2
	19	DS50ATB19H	1615	4.120	3.797	A1	1/2	1-5/8	1-21/32	1-1/2	1-5/16	3-5/64	0.343	2.7
	21	DS50ATB21H	2012	4.520	4.194	A1	1/2	2	1-21/32	1-1/4	1-5/16	3-15/16	0.343	3.3
	23	DS50ATB23H	2012	4.920	4.590	A1	1/2	2	1-21/32	1-1/4	1-5/16	3-57/64	0.343	3.7
	24	DS50ATB24H	2012	5.120	4.788	A1	1/2	2	1-21/32	1-1/4	1-5/16	4-5/64	0.343	4.1
DS60	17	DS60ATB17H	1615	4.460	4.002	A1	1/2	1-5/8	1-15/16	1-1/2	1-31/64	3-7/32	0.459	4.5
	18	DS60ATB18H	2012	4.700	4.319	A1	1/2	2	1-15/16	1-1/4	1-31/64	3-15/32	0.459	5.0
	19	DS60ATB19H	2012	4.950	4.557	A1	1/2	2	1-15/16	1-1/4	1-31/64	3-45/64	0.459	5.8
	20	DS60ATB20H	2517	5.190	4.794	A1	1/2	2-1/2	1-15/16	1-3/4	1-31/64	3-61/64	0.459	5.6
	21	DS60ATB21H	2517	5.430	5.032	A1	1/2	2-1/2	1-15/16	1-3/4	1-31/64	4-3/16	0.459	6.4
	23	DS60ATB23H	2517	5.910	5.508	A1	1/2	2-1/2	1-15/16	1-3/4	1-31/64	4-43/64	0.459	7.3
	24	DS60ATB24H	2517	6.150	5.746	A1	1/2	2-1/2	1-15/16	1-3/4	1-31/64	4-29/32	0.459	8.2
DS80	17	DS80ATB17H	2517	5.950	5.442	A1	1/2	2-1/2	2-3/16	1-3/4	1-5/8	4-5/16	0.575	7.6
	18	DS80ATB18H	2517	6.270	5.759	A1	1/2	2-1/2	2-3/16	1-3/4	1-5/8	4-3/4	0.575	8.7
	19	DS80ATB19H	3020	6.590	6.076	A1	15/16	3	2-3/16	2	1-5/8	4-61/64	0.575	9.7
	20	DS80ATB20H	3020	6.910	6.392	A1	15/16	3	2-3/16	2	1-5/8	5-9/32	0.575	10.0
	21	DS80ATB21H	3020	7.240	6.710	A1	15/16	3	2-3/16	2	1-5/8	5-19/32	0.575	12.0
	23	DS80ATB23H	3020	7.880	7.344	A1	15/16	3	2-3/16	2	1-5/8	6-15/64	0.575	14.5
DS100	16	DS100ATB16H	2517	7.030	6.407	A1	3/4	2-1/2	2-11/16	1-3/4	2	5	0.692	13.0
	17	DS100ATB17H	3020	7.440	6.803	A1	15/16	3	2-11/16	2	2	5-13/32	0.692	14.0
	18	DS100ATB18H	3020	7.840	7.198	A1	15/16	3	2-11/16	2	2	5-51/64	0.692	16.0
	19	DS100ATB19H	3020	8.240	7.595	A1	15/16	3	2-11/16	2	2	6-13/64	0.692	20.0
	21	DS100ATB21H	3020	9.040	8.387	A1	15/16	3	2-11/16	2	2	7	0.692	27.5

H - Denotes hardened teeth.

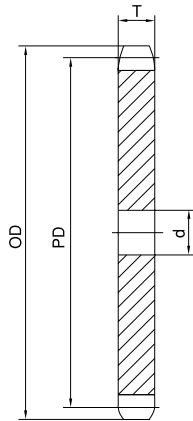
DOUBLE-PITCH SPROCKETS

Conveyor or Drive Series — Standard Roller

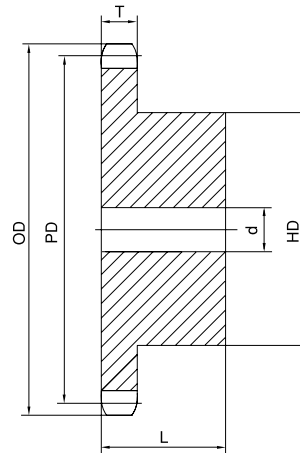
Double-Pitch



Series C-2000 chains have rollers of equal diameter and have a width equal to one half the conveyor chain pitch of American Standard Roller Chain. These highly efficient sprockets ensure greater longevity, by engaging every other tooth, thus half the teeth engage during any single revolution. Odd tooth number sprockets automatically alternate engagement during the sprocket's revolution. Even tooth number sprockets must be manually advanced at regular intervals in order to alternate engagement.



Type A



Type B

DOUBLE-PITCH SPROCKETS

2040/C2040 T=0.284" P=1" DR=0.312"

No. of Teeth	OD	PD	Part No.	Type	d		HD	L	App. Wt. (Lbs.)
					Min.	Max.			
11	2.000	1.852	2040B11	B	1/2	13/16	1-3/8*	7/8	0.34
12	2.170	2.000	2040B12	B	1/2	13/16	1-9/16*	7/8	0.44
13	2.330	2.152	2040B13	B	1/2	21/32	1-9/16*	7/8	0.48
14	2.490	2.305	2040B14	B	1/2	1-1/32	1-11/16*	7/8	0.60
15	2.650	2.458	2040B15	B	5/8	1-7/32	1-23/32*	7/8	0.66
16	2.810	2.613	2040B16	B	5/8	1-9/32	1-7/8	7/8	0.76
17	2.980	2.768	2040B17	B	5/8	1-5/16	2-3/64	1	1.00
18	3.140	2.924	2040B18	B	5/8	1-15/32	2-7/32	1	1.16
19	3.300	3.080	2040B19	B	5/8	1-5/8	2-3/8	1	1.36
20	3.460	3.236	2040B20	B	5/8	1-3/4	2-35/64	1	1.54
21	3.620	3.392	2040B21	B	5/8	1-25/32	2-45/64	1	1.74
22	3.780	3.549	2040B22	B	5/8	1-7/8	2-7/8	1	1.92
23	3.940	3.706	2040B23	B	5/8	2	3	1	2.16
24	4.100	3.864	2040B24	B	5/8	2-1/4	3-1/4	1	2.44
25	4.260	4.021	2040B25	B	5/8	2-1/4	3-1/4	1	2.48
26	4.420	4.179	2040B26	B	5/8	2-1/4	3-1/4	1	2.60
28	4.740	4.494	2040B28	B	5/8	2-1/4	3-1/4	1	2.74
30	5.060	4.810	2040B30	B	5/8	2-1/4	3-1/4	1	2.92

2050/C2050 T=0.343" P=1 1/4" DR=0.400"

No. of Teeth	OD	PD	Part No.	Type	d	App. Wt. (Lbs.)	Part No.	Type	d		HD	L	App. Wt. (Lbs.)
									Min.	Max.			
11	2.500	2.315					2050B11	B	5/8	13/16	1-3/4*	1	0.62
12	2.710	2.500					2050B12	B	5/8	1	1-63/64	1	0.80
13	2.910	2.690					2050B13	B	5/8	1-7/32	1-23/32	1	0.82
14	3.110	2.881					2050B14	B	5/8	1-9/32	1-15/16	1	1.00
15	3.320	3.073					2050B15	B	5/8	1-13/32	2-5/32	1	1.22
16	3.520	3.266					2050B16	B	5/8	1-19/32	2-23/64	1	1.44
17	3.720	3.460					2050B17	B	5/8	1-3/4	2-9/16	1	1.68
18	3.920	3.655					2050B18	B	5/8	1-25/32	2-25/32	1	1.94
19	4.120	3.850					2050B19	B	5/8	1-31/32	2-63/64	1	2.24
20	4.320	4.045					2050B20	B	3/4	2	3	1	2.30
21	4.520	4.241					2050B21	B	3/4	2	3	1	2.40
22	4.720	4.437					2050B22	B	3/4	2	3	1	2.54
23	4.920	4.633					2050B23	B	3/4	2	3	1	2.66
24	5.120	4.830	2050A24	A	23/32	1.58	2050B24	B	3/4	2	3	1-1/4	3.30
25	5.320	5.026	2050A25	A	23/32	1.68	2050B25	B	3/4	2	3	1-1/4	3.42
26	5.520	5.223	2050A26	A	23/32	1.88	2050B26	B	3/4	2	3	1-1/4	3.62
28	5.920	5.617	2050A28	A	23/32	2.22	2050B28	B	3/4	2	3	1-1/4	3.78
30	6.320	6.012	2050A30	A	23/32	2.54	2050B30	B	3/4	2-1/4	3-1/4	1-1/4	4.58

*Hub has recessed groove allowing for chain clearance.

T - Tooth P - Pitch DR - Diametric Roller.



DOUBLE-PITCH SPROCKETS

2060/C2060 T=0.459" P=1½" DR=0.469"

No. of Teeth	OD	PD	Part No.	Type	d	App. Wt. (Lbs.)	Part No.	Type	d		HD	L	App. Wt. (Lbs.)
									Min.	Max.			
11	3.000	2.773					2060B11	B	3/4	1	2-1/16*	1-1/4	1.14
12	3.250	3.000					2060B12	B	3/4	1-1/4	2-3/8*	1-1/4	1.46
13	3.490	3.228					2060B13	B	3/4	1-5/16	2-5/64	1-1/4	1.52
14	3.740	3.457					2060B14	B	3/4	1-9/16	2-21/64	1-1/4	1.86
15	3.980	3.688					2060B15	B	3/4	1-3/4	2-19/32	1-1/4	2.24
16	4.220	3.920					2060B16	B	3/4	1-27/32	2-27/32	1-1/4	2.64
17	4.460	4.152					2060B17	B	3/4	2-3/32	3-3/32	1-1/4	3.08
18	4.700	4.386					2060B18	B	3/4	2-9/32	3-11/32	1-1/4	3.56
19	4.940	4.620					2060B19	B	3/4	2-11/32	3-1/2	1-1/4	3.94
20	5.190	4.854					2060B20	B	3/4	2-9/16	3-7/8	1-1/4	4.50
21	5.430	5.089					2060B21	B	3/4	2-3/4	4	1-1/4	5.02
22	5.670	5.324					2060B22	B	3/4	2-3/4	4	1-1/4	5.26
23	5.910	5.560					2060B23	B	3/4	2-3/4	4	1-1/4	5.54
24	6.150	5.796	2060A24	A	23/32	3.02	2060B24	B	3/4	2-3/4	4	1-1/4	5.90
25	6.390	6.032	2060A25	A	23/32	3.36	2060B25	B	3/4	2-3/4	4	1-1/4	6.08
26	6.630	6.268	2060A26	A	23/32	3.58	2060B26	B	3/4	2-3/4	4	1-1/4	6.36
28	7.110	6.741	2060A28	A	23/32	4.12	2060B28	B	3/4	2-3/4	4	1-1/4	7.02
30	7.590	7.215	2060A30	A	23/32	4.88	2060B30	B	3/4	2-3/4	4	1-1/4	7.54

2080/C2080 T=0.575" P=2" DR=0.625"

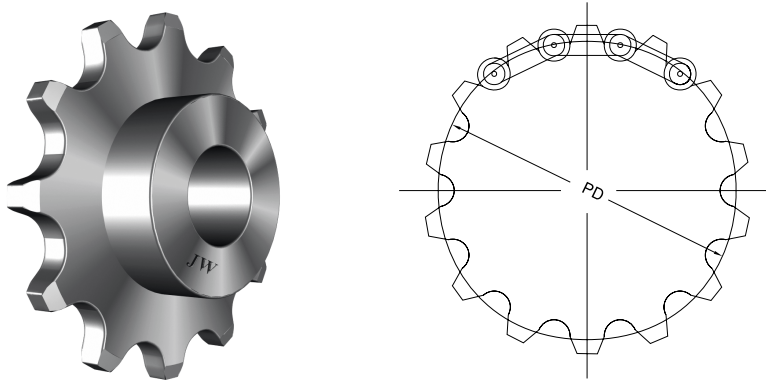
No. of Teeth	OD	PD	Part No.	Type	d	App. Wt. (Lbs.)	Part No.	Type	d		HD	L	App. Wt. (Lbs.)
									Min.	Max.			
11	4.010	3.694					2080B11	B	1	1-1/2	2-13/16*	1-5/8	2.50
12	4.330	4.000					2080B12	B	1	1-11/16	3-1/8*	1-5/8	3.20
13	4.660	4.304					2080B13	B	1	1-25/32	2-25/32	1-1/2	3.30
14	4.980	4.610					2080B14	B	1	2-1/8	3-1/8	1-1/2	4.00
15	5.300	4.917					2080B15	B	1	2-9/32	3-29/64	1-1/2	4.80
16	5.630	5.226					2080B16	B	1	2-17/32	3-51/64	1-1/2	5.70
17	5.950	5.536	2080A17	A	15/16	3.40	2080B17	B	1	2-3/4	4	1-1/2	6.40
18	6.270	5.848	2080A18	A	15/16	3.80	2080B18	B	1	2-3/4	4-1/4	1-1/2	7.40
19	6.590	6.160	2080A19	A	15/16	4.30	2080B19	B	1	2-3/4	4-1/4	1-1/2	7.70
20	6.910	6.472	2080A20	A	15/16	4.80	2080B20	B	1	2-3/4	4-1/4	1-1/2	8.30
21	7.230	6.785	2080A21	A	15/16	5.30	2080B21	B	1	2-3/4	4-1/4	1-3/4	9.40
22	7.560	7.099	2080A22	A	15/16	5.80	2080B22	B	1	2-3/4	4-1/4	1-3/4	10.00
23	7.880	7.413	2080A23	A	15/16	6.40	2080B23	B	1	2-3/4	4-1/4	1-3/4	10.50
24	8.200	7.727	2080A24	A	15/16	7.10	2080B24	B	1	2-3/4	4-1/4	1-3/4	11.10
25	8.520	8.042	2080A25	A	15/16	7.50	2080B25	B	1	2-3/4	4-1/4	1-3/4	12.00
26	8.840	8.357	2080A26	A	1-3/16	8.30	2080B26	B	1-1/4	3-1/4	4-3/4	2	14.80
28	9.480	8.988	2080A28	A	1-3/16	9.20	2080B28	B	1-3/16	3-1/4	4-3/4	2	16.60
30	10.110	9.620	2080A30	A	1-3/16	10.70	2080B30	B	1-3/16	3-1/4	4-3/4	2	17.80

*Hub has recessed groove allowing for chain clearance.

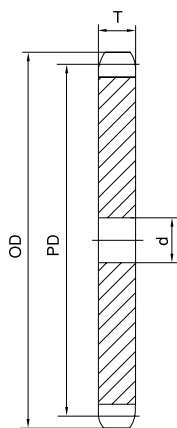
T - Tooth P - Pitch DR - Diametric Roller.

DOUBLE-PITCH SPROCKETS

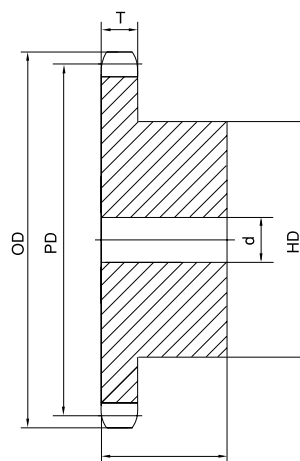
Conveyor Series — Carrier Roller



Sprockets for the carrier roller C-2002 series are cut with space cutters to match the American Standard Roller Chain of equal diameter. Carrier roller sprocket teeth mesh with the chain securely.



Type A



Type B



DOUBLE-PITCH SPROCKETS

2042/C2042 T=0.284" P=1" DR=0.625"

No. of Teeth	OD	PD	Part No.	Type	d	App. Wt. (Lbs.)	Part No.	Type	d		HD	L	App. Wt. (Lbs.)
									Min.	Max.			
8	3.010	2.613					2042B8	B	5/8	1-9/32	1-7/8	7/8	0.72
9	3.350	2.924					2042B9	B	5/8	1-15/32	2-7/32	7/8	1.02
10	3.680	3.236					2042B10	B	5/8	1-3/4	2-35/64	1	1.50
11	4.000	3.549					2042B11	B	5/8	1-7/8	2-5/8	1	1.68
12	4.330	3.864					2042B12	B	5/8	2-1/4	3-1/16	1	2.22
13	4.660	4.179					2042B13	B	5/8	2-1/4	3-1/4	1	2.56
14	4.980	4.494					2042B14	B	5/8	2-1/4	3-1/4	1	2.72
15	5.300	4.810					2042B15	B	5/8	2-1/4	3-1/4	1	2.90
16	5.630	5.126	2042A16	A	19/32	1.38	2042B16	B	5/8	2-1/4	3-1/4	1	3.10
17	5.950	5.442	2042A17	A	19/32	1.66	2042B17	B	5/8	2-1/4	3-1/4	1	3.40
18	6.270	5.759	2042A18	A	19/32	1.88	2042B18	B	5/8	2-1/4	3-1/4	1	3.56
19	6.590	6.076	2042A19	A	19/32	2.06	2042B19	B	5/8	2-1/4	3-1/4	1	3.72
20	6.910	6.392	2042A20	A	23/32	2.40	2042B20	B	3/4	2-3/8	3-1/2	1-1/8	4.72
21	7.240	6.710	2042A21	A	23/32	2.62	2042B21	B	3/4	2-3/8	3-1/2	1-1/8	4.84
22	7.560	7.027	2042A22	A	23/32	2.88	2042B22	B	3/4	2-3/8	3-1/2	1-1/8	5.18
23	7.880	7.344	2042A23	A	23/32	3.14	2042B23	B	3/4	2-3/8	3-1/2	1-1/8	5.04
24	8.200	7.661	2042A24	A	23/32	3.22	2042B24	B	3/4	2-3/8	3-1/2	1-1/8	5.58
25	8.520	7.979	2042A25	A	23/32	3.50	2042B25	B	3/4	2-3/8	3-1/2	1-1/8	5.96
26	8.840	8.296	2042A26	A	23/32	3.74	2042B26	B	3/4	2-3/8	3-1/2	1-1/8	6.22
28	9.480	8.931	2042A28	A	23/32	4.76	2042B28	B	3/4	2-3/8	3-1/2	1-1/8	6.78
30	10.110	9.567	2042A30	A	23/32	5.08	2042B30	B	3/4	2-3/8	3-1/2	1-1/8	7.56

2052/C2052 T=0.343" P=1 1/4" DR=0.750"

No. of Teeth	OD	PD	Part No.	Type	d	App. Wt. (Lbs.)	Part No.	Type	d		HD	L	App. Wt. (Lbs.)
									Min.	Max.			
8	3.770	3.266					2052B8	B	5/8	1-19/32	2-23/64	1	1.38
9	4.190	3.655					2052B9	B	5/8	1-25/32	2-25/32	1	1.92
10	4.600	4.045					2052B10	B	5/8	2	3	1	2.30
11	5.010	4.437					2052B11	B	5/8	2	3	1	2.54
12	5.420	4.830	2052A12	A	23/32	1.58	2052B12	B	3/4	2	3	1-1/4	3.20
13	5.820	5.223	2052A13	A	23/32	1.82	2052B13	B	3/4	2	3	1-1/4	3.48
14	6.230	5.617	2052A14	A	23/32	2.28	2052B14	B	3/4	2	3	1-1/4	3.88
15	6.630	6.012	2052A15	A	23/32	2.46	2052B15	B	3/4	2-1/4	3-1/4	1-1/4	4.46
16	7.030	6.407	2052A16	A	23/32	2.88	2052B16	B	3/4	2-1/4	3-1/4	1-1/4	4.80
17	7.440	6.803	2052A17	A	23/32	3.28	2052B17	B	3/4	2-1/4	3-1/4	1-1/4	5.34
18	7.840	7.198	2052A18	A	23/32	3.64	2052B18	B	3/4	2-1/4	3-1/4	1-1/4	5.64
19	8.240	7.595	2052A19	A	23/32	4.12	2052B19	B	3/4	2-1/4	3-1/4	1-1/4	6.04
20	8.640	7.991	2052A20	A	23/32	4.72	2052B20	B	3/4	2-1/4	3-1/4	1-1/4	6.48
21	9.040	8.387	2052A21	A	23/32	5.08	2052B21	B	3/4	2-1/4	3-1/4	1-1/4	7.00
22	9.440	8.783	2052A22	A	23/32	5.20	2052B22	B	3/4	2-1/4	3-1/4	1-1/4	7.30
23	9.850	9.180	2052A23	A	15/16	5.84	2052B23	B	1	2-3/4	3-3/4	1-1/4	8.66
24	10.250	9.577	2052A24	A	15/16	6.70	2052B24	B	15/16	2-3/4	3-3/4	1-1/4	9.32
25	10.650	9.973	2052A25	A	15/16	7.54	2052B25	B	15/16	2-3/4	3-3/4	1-1/4	10.30
26	11.050	10.370	2052A26	A	15/16	8.24	2052B26	B	15/16	2-3/4	3-3/4	1-1/4	11.00
28	11.840	11.164	2052A28	A	15/16	8.70	2052B28	B	15/16	2-3/4	3-3/4	1-1/4	11.70
30	12.640	11.958	2052A30	A	15/16	9.92	2052B30	B	15/16	2-3/4	3-3/4	1-1/4	12.90

T - Tooth P - Pitch DR - Diametric Roller.

DOUBLE-PITCH SPROCKETS

2062/C2062 T=0.459" P=1 1/2" DR=0.875"

No. of Teeth	OD	PD	Part No.	Type	d	App. Wt. (Lbs.)	Part No.	Type	d		HD	L	App. Wt. (Lbs.)
									Min.	Max.			
8	4.520	3.920					2062B8	B	3/4	1-27/32	2-27/32	1-1/4	2.60
9	5.020	4.386					2062B9	B	3/4	2-9/32	3-11/32	1-1/4	3.48
10	5.520	4.854					2062B10	B	3/4	2-9/16	3-53/64	1-1/4	4.54
11	6.010	5.324					2062B11	B	3/4	2-3/4	4	1-1/4	5.20
12	6.500	5.796	2062A12	A	23/32	2.98	2062B12	B	3/4	2-3/4	4	1-1/4	5.70
13	6.990	6.268	2062A13	A	23/32	3.60	2062B13	B	3/4	2-3/4	4	1-1/4	6.28
14	7.470	6.741	2062A14	A	23/32	4.02	2062B14	B	3/4	2-3/4	4	1-1/4	6.82
15	7.960	7.215	2062A15	A	23/32	4.76	2062B15	B	3/4	2-3/4	4	1-1/4	7.48
16	8.440	7.689	2062A16	A	23/32	5.70	2062B16	B	3/4	2-3/4	4	1-1/4	8.18
17	8.920	8.163	2062A17	A	15/16	6.16	2062B17	B	1	2-3/4	4	1-1/4	8.82
18	9.410	8.638	2062A18	A	15/16	6.96	2062B18	B	1	2-3/4	4	1-1/4	9.36
19	9.890	9.113	2062A19	A	15/16	8.00	2062B19	B	1	2-3/4	4-1/4	1-1/4	11.10
20	10.370	9.589	2062A20	A	15/16	8.46	2062B20	B	15/16	2-3/4	4-1/4	1-1/4	11.66
21	10.850	10.064	2062A21	A	15/16	8.93	2062B21	B	15/16	2-3/4	4-1/4	1-1/4	13.24
22	11.330	10.540	2062A22	A	15/16	10.74	2062B22	B	15/16	2-3/4	4-1/4	1-1/4	13.78
23	11.810	11.016	2062A23	A	15/16	11.64	2062B23	B	15/16	2-3/4	4-1/4	1-1/4	14.90
24	12.290	11.492	2062A24	A	15/16	12.64	2062B24	B	15/16	2-3/4	4-1/4	1-1/4	15.66
25	12.770	11.968	2062A25	A	15/16	13.78	2062B25	B	15/16	2-3/4	4-1/4	1-1/4	16.80
26	13.250	12.444	2062A26	A	15/16	15.00	2062B26	B	15/16	2-3/4	4-1/4	1-3/4	20.20
28	14.210	13.397	2062A28	A	1-1/4	17.32	2062B28	B	1-1/4	2-3/4	4-1/4	1-3/4	21.86
30	15.170	14.350	2062A30	A	1-1/4	19.50	2062B30	B	1-1/4	2-3/4	4-1/4	1-3/4	26.00

2082/C2082 T=0.575" P=2" DR=1.125"

No. of Teeth	OD	PD	Part No.	Type	d	App. Wt. (Lbs.)	Part No.	Type	d		HD	L	App. Wt. (Lbs.)
									Min.	Max.			
8	6.030	5.226					2082B8	B	1	2-17/32	3-51/64	1-3/4	6.40
9	6.700	5.848					2082B9	B	1	2-3/4	4-1/4	1-3/4	8.20
10	7.360	6.472					2082B10	B	1	2-3/4	4-1/4	1-3/4	9.20
11	8.010	7.099	2082A11	A	15/16	5.70	2082B11	B	1	2-3/4	4-1/4	1-3/4	10.10
12	8.660	7.727	2082A12	A	15/16	6.80	2082B12	B	1	2-3/4	4-1/4	1-3/4	11.20
13	9.310	8.357	2082A13	A	1-3/16	7.70	2082B13	B	1-1/4	3-1/4	4-3/4	2	15.00
14	9.960	8.988	2082A14	A	1-3/16	9.10	2082B14	B	1-1/4	3-1/4	4-3/4	2	15.80
15	10.610	9.620	2082A15	A	1-3/16	10.70	2082B15	B	1-3/16	3-1/4	4-3/4	2	17.80
16	11.250	10.252	2082A16	A	1-3/16	12.40	2082B16	B	1-3/16	3-1/4	4-3/4	2	19.30
17	11.900	10.885	2082A17	A	1-3/16	14.10	2082B17	B	1-3/16	3-1/4	4-3/4	2	21.40
18	12.540	11.518	2082A18	A	1-3/16	15.40	2082B18	B	1-3/16	3-1/4	4-3/4	2	22.90
19	13.190	12.151	2082A19	A	1-3/16	18.00	2082B19	B	1-3/16	3-1/4	4-3/4	2	24.40
20	13.830	12.785	2082A20	A	1-3/16	19.20	2082B20	B	1-3/16	3-1/4	4-3/4	2	26.70
21	14.470	13.419	2082A21	A	1-1/4	20.80	2082B21	B	1-1/4	3-1/4	4-3/4	2	28.40
22	15.110	14.053	2082A22	A	1-1/4	23.70	2082B22	B	1-1/4	3-1/4	4-3/4	2	30.60
23	15.750	14.688	2082A23	A	1-1/4	24.90	2082B23	B	1-1/4	3-1/4	4-3/4	2	32.20
24	16.390	15.323	2082A24	A	1-1/4	27.60	2082B24	B	1-1/4	3-1/4	4-3/4	2	34.90
25	17.030	15.958	2082A25	A	1-1/4	30.20	2082B25	B	1-1/4	3-1/4	4-3/4	2	37.80
26	17.670	16.593	2082A26	A	1-1/4	32.80	2082B26	B	1-1/4	3-1/2	5-1/4	2	41.50
28	18.950	17.863	2082A28	A	1-1/4	38.60	2082B28	B	1-1/4	3-1/2	5-1/4	2	47.70
30	20.230	19.134	2082A30	A	1-1/4	43.80	2082B30	B	1-1/4	3-1/2	5-1/4	2	54.50

T - Tooth P - Pitch DR - Diametric Roller.

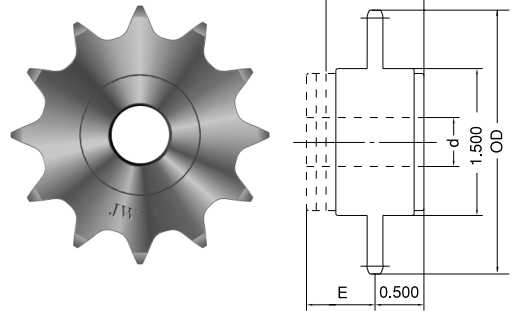
IDLER SPROCKETS

Bronze Bushed

No. of Teeth	Part No.	Chain Pitch	OD	d	E*	App. Wt. (Lbs.)
20	31E20	35	2.60	1/2	0.59	0.46
15	41E15	41-40	2.65	1/2	0.59	0.50
15	51E15	50	3.22	1/2	0.72	0.70
14	61E14	60-60H	3.74	1/2	0.81	0.92

Idlers fitted with oil impregnated sintered bronze bearings and mounted on ground steel journals. Radial loading to 50 pounds.

*Specifications are minimum clearance needed for chain.

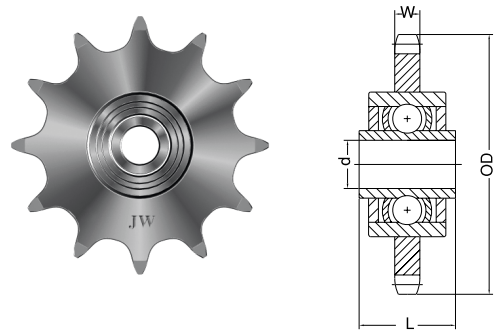


Bronze Bushed Type

High Speed Ball Bearing

No. of Teeth	Part No.	Chain Pitch	OD	d	L	W	App. Wt. (Lbs.)
20	35BB20H	35	2.60	0.638	0.72	0.168	0.38
17	40BB17H	40	2.97	0.638	0.72	0.284	0.52
18	40BB18H	40	3.14	0.638	0.72	0.284	0.53
15	50BB15H	50	3.32	0.638	0.72	0.343	0.75
17	50BB17H	50	3.72	0.638	0.72	0.343	0.78
13	60BB13H	60	3.51	0.638	0.72	0.459	0.76
15	60BB15H	60	3.98	0.638	0.72	0.459	1.06
12	80BB12H	80	4.36	0.750	0.61	0.575	1.50

H - Denotes hardened teeth.



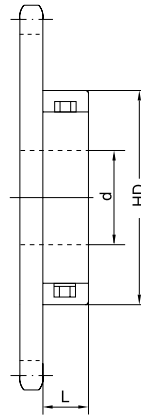
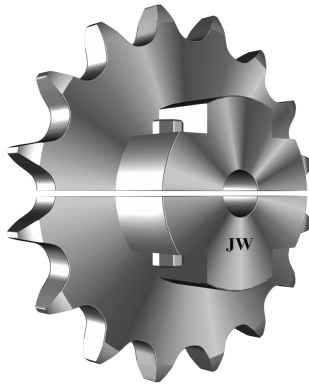
Ball Bearing Type

Radial Load Capacity in Lbs.

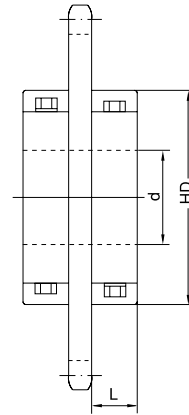
35BB20 to 60BB13	RPM	50	100	300	500	750	1000	1200	1500	1800	2400	2600	3000	3600	4000	4500	5000
	Load	650	515	357	300	265	240	225	208	195	179	173	155	156	151	143	140
80BB12	Load	1630	1290	895	755	665	600	565	523	493	447	434	415				

Load ratings are based on an average bearing life of 2500 hours.

INSTANT-SPLIT SPROCKETS



Type B



Type C

Single Type B & C

Hub No.	d	HD	L	Bolts	App. Wt. (Lbs.)
S-1	3/4 to 1-1/2	3-1/8	1	3/8 x 2-1/4	1.8
S-2	1-3/8 to 2-1/4	4-3/8	1-1/4	1/2 x 3	4.1
S-3	2 to 3	6	1-3/8	5/8 x 4-1/2	8.4
S-4	2-3/4 to 4	7-5/8	1-1/2	3/4 x 5-1/2	14.4
S-5	3-3/4 to 5	9-1/4	2	1 x 6	27.8
S-6	4-3/4 to 6	10-1/4	2-1/4	1 x 6	35.4
S-7	5-3/4 to 7	12-1/2	2-1/2	1 x 7	64.4
S-8	6-1/4 to 8	14-1/2	3	1 x 8	98.5

To determine length through bore, add plate thickness to hub length.
For style C, multiply hub length by 2, then add plate thickness.

Sprocket Size for Instant-Split Hubs

Hub No.	d	Chain Pitch - Minimum Number of Teeth										
		40	50	60	80	100	120	140	160	180	200	240
S-1	3/4 to 1-1/2	28	23	20	16							
S-2	1-3/8 to 2-1/4	38	30	26	20	17	15	14				
S-3	2 to 3	46	37	32	25	20	18	16	15	14		
S-4	2-3/4 to 4		48	40	30	25	21	19	17	16	15	12
S-5	3-3/4 to 5					30	25	22	20	18	17	14
S-6	4-3/4 to 6					32	27	24	22	19	18	15
S-7	5-3/4 to 7						32	28	25	22	21	18
S-8	6-1/4 to 8							28	25	23	20	

Manufactured from stock plate sprockets, instant-split sprockets are easily installed with a wrench, minimizing unwanted down time.
Instant-split hubs are for use with plate sprockets only. Consult JointWay offices for multiple-strand split sprockets.