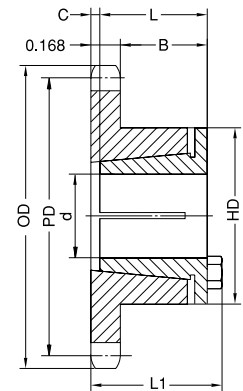
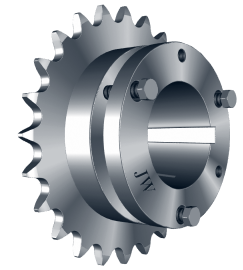


No. 35 SPLIT-TAPER-BUSHED SPROCKETS

3/8" Pitch

Single Split-Taper-Bushed

No. of Teeth	Part No.	Bushing	OD	PD	Max. Bore d	Type	L1	L	B	C	HD	App. Wt. (Lbs.)
15	35G15H	G	1.990	1.804	1	B ₃	1-11/32	1	1	5/32	2	0.30
16	35G16H	G	2.100	1.922	1	B ₃	1-11/32	1	1	5/32	2	0.30
17	35G17H	G	2.230	2.041	1	B ₃	1-11/32	1	1	5/32	2	0.30
18	35G18H	G	2.350	2.159	1	B ₃	1-11/32	1	1	5/32	2	0.30
19	35G19H	G	2.470	2.278	1	B ₃	1-1/4	1	29/32	1/16	2	0.30
19	35H19H	H	2.470	2.278	1-1/2	B ₃	1-1/2	1-1/4	1-5/32	1/16	2-1/2	0.50
20	35H20H	H	2.590	2.397	1-1/2	B ₃	1-1/2	1-1/4	1-5/32	1/16	2-1/2	0.50
21	35H21H	H	2.700	2.516	1-1/2	B ₃	1-1/2	1-1/4	1-5/32	1/16	2-1/2	0.60
22	35H22H	H	2.830	2.635	1-1/2	B ₃	1-1/2	1-1/4	1-5/32	1/16	2-1/2	0.70
23	35H23H	H	2.950	2.754	1-1/2	B ₃	1-1/2	1-1/4	1-5/32	1/16	2-1/2	0.70
24	35H24H	H	3.050	2.873	1-1/2	B ₃	1-1/2	1-1/4	1-5/32	1/16	2-1/2	0.80
25	35H25H	H	3.190	2.992	1-1/2	B ₃	1-1/2	1-1/4	1-5/32	1/16	2-1/2	0.80
26	35H26H	H	3.310	3.111	1-1/2	B ₃	1-1/2	1-1/4	1-5/32	1/16	2-1/2	0.80
28	35H28H	H	3.550	3.349	1-1/2	B ₃	1-1/2	1-1/4	1-5/32	1/16	2-1/2	0.90
30	35H30H	H	3.790	3.588	1-1/2	B ₃	1-1/2	1-1/4	1-5/32	1/16	2-1/2	0.90
32	35H32H	H	4.030	3.826	1-1/2	B ₃	1-1/2	1-1/4	1-5/32	1/16	2-1/2	0.90
35	35H35H	H	4.390	4.183	1-1/2	B ₃	1-1/2	1-1/4	1-5/32	1/16	2-1/2	1.00
36	35H36H	H	4.510	4.303	1-1/2	B ₃	1-1/2	1-1/4	1-5/32	1/16	2-1/2	1.00
40	35H40	H	4.990	4.780	1-1/2	B ₃	1-1/2	1-1/4	1-5/32	1/16	2-1/2	1.20
42	35H42	H	5.230	5.018	1-1/2	B ₃	1-1/2	1-1/4	1-5/32	1/16	2-1/2	1.20
45	35H45	H	5.590	5.379	1-1/2	B ₃	1-1/2	1-1/4	1-5/32	1/16	2-1/2	1.40
48	35H48	H	5.950	5.734	1-1/2	B ₃	1-1/2	1-1/4	1-5/32	1/16	2-1/2	1.50
54	35H54	H	6.660	6.449	1-1/2	B ₃	1-1/2	1-1/4	1-5/32	1/16	2-1/2	1.80
60	35H60	H	7.380	7.165	1-1/2	B ₃	1-1/2	1-1/4	1-5/32	1/16	2-1/2	2.30
70	35H70	H	8.580	8.358	1-1/2	B ₃	1-1/2	1-1/4	1-5/32	1/16	2-1/2	2.80
72	35H72	H	8.810	8.597	1-1/2	B ₃	1-1/2	1-1/4	1-5/32	1/16	2-1/2	3.00
80	35H80	H	9.770	9.552	1-1/2	B ₃	1-1/2	1-1/4	1-5/32	1/16	2-1/2	3.80
84	35H84	H	10.250	10.029	1-1/2	B ₃	1-1/2	1-1/4	1-5/32	1/16	2-1/2	4.00
96	35H96	H	11.680	11.461	1-1/2	B ₃	1-1/2	1-1/4	1-5/32	1/16	2-1/2	5.30
112	35H112	H	13.590	13.371	1-1/2	B ₃	1-1/2	1-1/4	1-5/32	1/16	2-1/2	6.80



Type B₃

H - Denotes hardened teeth.

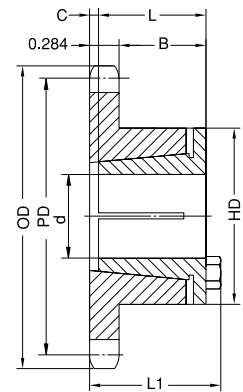
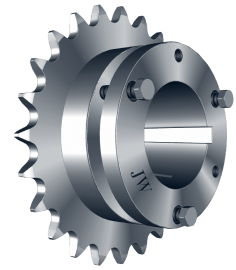
SPLIT-TAPER-BUSHED SPROCKETS

No. 40

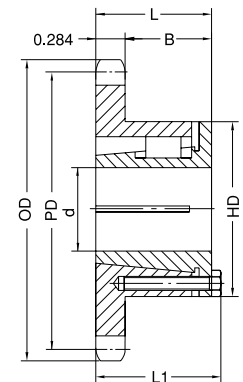
1/2" Pitch

Single Split-Taper-Bushed

No. of Teeth	Part No.	Bushing	OD	PD	Max. Bore d	Type	L1	L	B	C	HD	App. Wt. (Lbs.)
12	40G12H	G	2.170	1.932	1	B ₃	1-1/2	1	1-1/32	5/16	2	0.30
13	40G13H	G	2.300	2.089	1	B ₃	1-1/2	1	1-1/32	5/16	2	0.40
14	40G14H	G	2.490	2.247	1	B ₃	1-1/2	1	1-1/32	5/16	2	0.50
15	40H15H	H	2.650	2.405	1-1/2	B ₃	1-19/32	1-1/4	1-1/8	5/32	2-1/2	0.50
16	40G16H	G	2.800	2.563	1	B ₃	1-1/4	1	25/32	1/16	2	0.40
16	40H16H	H	2.800	2.563	1-1/2	B ₃	1-19/32	1-1/4	1-1/8	5/32	2-1/2	0.60
17	40H17H	H	2.960	2.721	1-1/2	B ₃	1-1/2	1-1/4	1-1/32	1/16	2-1/2	0.60
18	40H18H	H	3.140	2.879	1-1/2	B ₃	1-1/2	1-1/4	1-1/32	1/16	2-1/2	0.70
18	40P18H	P1	3.140	2.879	1-3/4	B ₄	2-3/16	1-15/16	1-21/32		3	1.20
19	40H19H	H	3.300	3.038	1-1/2	B ₃	1-1/2	1-1/4	1-1/32	1/16	2-1/2	0.80
19	40P19H	P1	3.300	3.038	1-3/4	B ₄	2-3/16	1-15/16	1-21/32		3	1.30
20	40H20H	H	3.450	3.196	1-1/2	B ₃	1-1/2	1-1/4	1-1/32	1/16	2-1/2	0.80
20	40P20H	P1	3.450	3.196	1-3/4	B ₄	2-3/16	1-15/16	1-21/32		3	1.30
21	40H21H	H	3.620	3.355	1-1/2	B ₃	1-1/2	1-1/4	1-1/32	1/16	2-1/2	0.90
21	40P21H	P1	3.620	3.355	1-3/4	B ₄	2-3/16	1-15/16	1-21/32		3	1.50
22	40H22H	H	3.750	3.513	1-1/2	B ₃	1-1/2	1-1/4	1-1/32	1/16	2-1/2	0.90
22	40P22H	P1	3.750	3.513	1-3/4	B ₄	2-3/16	1-15/16	1-21/32		3	0.60
23	40H23H	H	3.940	3.672	1-1/2	B ₃	1-1/2	1-1/4	1-1/32	1/16	2-1/2	1.00
23	40P23H	P1	3.940	3.672	1-3/4	B ₄	2-3/16	1-15/16	1-21/32		3	1.70
24	40H24H	H	4.100	3.831	1-1/2	B ₃	1-1/2	1-1/4	1-1/32	1/16	2-1/2	1.20
24	40P24H	P1	4.100	3.831	1-3/4	B ₄	2-3/16	1-15/16	1-21/32		3	1.80
25	40H25H	H	4.260	3.989	1-1/2	B ₃	1-1/2	1-1/4	1-1/32	1/16	2-1/2	1.30
25	40P25H	P1	4.260	3.989	1-3/4	B ₄	2-3/16	1-15/16	1-21/32		3	2.00
26	40H26H	H	4.420	4.148	1-1/2	B ₃	1-1/2	1-1/4	1-1/32	1/16	2-1/2	1.40
26	40P26H	P1	4.420	4.148	1-3/4	B ₄	2-3/16	1-15/16	1-21/32		3	2.00
27	40H27H	H	4.580	4.307	1-1/2	B ₃	1-1/2	1-1/4	1-1/32	1/16	2-1/2	1.40
27	40P27H	P1	4.580	4.307	1-3/4	B ₄	2-3/16	1-15/16	1-21/32		3	2.10
28	40H28H	H	4.740	4.466	1-1/2	B ₃	1-1/2	1-1/4	1-1/32	1/16	2-1/2	1.50
28	40P28H	P1	4.740	4.466	1-3/4	B ₄	2-3/16	1-15/16	1-21/32		3	2.20
29	40P29H	P1	4.900	4.625	1-3/4	B ₄	2-3/16	1-15/16	1-21/32		3	2.30
30	40H30H	H	5.060	4.783	1-1/2	B ₃	1-1/2	1-1/4	1-1/32	1/16	2-1/2	1.60
30	40P30H	P1	5.060	4.783	1-3/4	B ₄	2-3/16	1-15/16	1-21/32		3	2.40
31	40P31H	P1	5.220	4.942	1-3/4	B ₄	2-3/16	1-15/16	1-21/32		3	2.50
32	40P32H	P1	5.380	5.101	1-3/4	B ₄	2-3/16	1-15/16	1-21/32		3	2.60
33	40P33H	P1	5.540	5.260	1-3/4	B ₄	2-3/16	1-15/16	1-21/32		3	2.60
34	40P34H	P1	5.700	5.419	1-3/4	B ₄	2-3/16	1-15/16	1-21/32		3	2.80
35	40P35H	P1	5.860	5.578	1-3/4	B ₄	2-3/16	1-15/16	1-21/32		3	2.90
36	40P36H	P1	6.020	5.737	1-3/4	B ₄	2-3/16	1-15/16	1-21/32		3	3.10
37	40P37	P1	6.180	5.896	1-3/4	B ₄	2-3/16	1-15/16	1-21/32		3	3.30
38	40P38	P1	6.330	6.055	1-3/4	B ₄	2-3/16	1-15/16	1-21/32		3	3.30
40	40P40	P1	6.650	6.373	1-3/4	B ₄	2-3/16	1-15/16	1-21/32		3	3.50
41	40P41	P1	6.810	6.532	1-3/4	B ₄	2-3/16	1-15/16	1-21/32		3	3.60
42	40P42	P1	6.970	6.691	1-3/4	B ₄	2-3/16	1-15/16	1-21/32		3	3.90
44	40P44	P1	7.290	7.009	1-3/4	B ₄	2-3/16	1-15/16	1-21/32		3	4.00
45	40P45	P1	7.450	7.168	1-3/4	B ₄	2-3/16	1-15/16	1-21/32		3	4.20
47	40P47	P1	7.770	7.486	1-3/4	B ₄	2-3/16	1-15/16	1-21/32		3	4.60
48	40P48	P1	7.930	7.645	1-3/4	B ₄	2-3/16	1-15/16	1-21/32		3	4.80
50	40P50	P1	8.250	7.963	1-3/4	B ₄	2-3/16	1-15/16	1-21/32		3	5.00
54	40P54	P1	8.890	8.599	1-3/4	B ₄	2-3/16	1-15/16	1-21/32		3	5.50
56	40P56	P1	9.200	8.917	1-3/4	B ₄	2-3/16	1-15/16	1-21/32		3	5.90
60	40P60	P1	9.840	9.554	1-3/4	B ₄	2-3/16	1-15/16	1-21/32		3	6.60
60	40Q60	Q1	9.840	9.554	2-11/16	B ₄	2-25/32	2-1/2	2-7/32		4-1/8	8.80
70	40P70	P1	11.430	11.145	1-3/4	B ₄	2-3/16	1-15/16	1-21/32		3	8.60
70	40Q70	Q1	11.430	11.145	2-11/16	B ₄	2-25/32	2-1/2	2-7/32		4-1/8	11.00
72	40Q72	Q1	11.750	11.463	2-11/16	B ₄	2-25/32	2-1/2	2-7/32		4-1/8	11.20
80	40Q80	Q1	13.030	12.736	2-11/16	B ₄	2-25/32	2-1/2	2-7/32		4-1/8	13.10
84	40Q84	Q1	13.660	13.372	2-11/16	B ₄	2-25/32	2-1/2	2-7/32		4-1/8	14.10
96	40Q96	Q1	15.570	15.281	2-11/16	B ₄	2-25/32	2-1/2	2-7/32		4-1/8	17.30
112	40Q112	Q1	18.120	17.828	2-11/16	B ₄	2-25/32	2-1/2	2-7/32		4-1/8	12.80



Type B3



Type B4

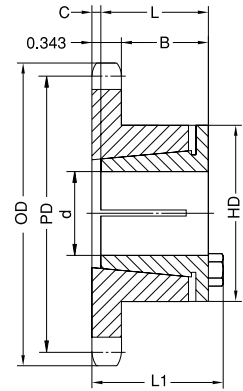
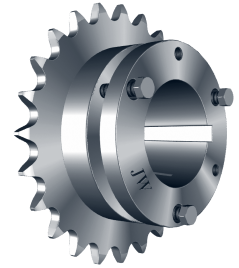
H - Denotes hardened teeth.

No. 50 SPLIT-TAPER-BUSHED SPROCKETS

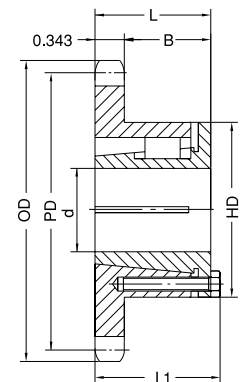
5/8" Pitch

Single Split-Taper-Bushed

No. of Teeth	Part No.	Bushing	OD	PD	Max. Bore d	Type	L1	L	B	C	HD	App. Wt. (Lbs.)
11	50G11H	G	2.500	2.219	1	B ₃	1-19/32	1	1-1/16	13/32	2	0.50
12	50G12H	G	2.700	2.415	1	B ₃	1-19/32	1	1-1/16	13/32	2	0.50
13	50H13H	H	2.910	2.612	1-1/2	B ₃	1-21/32	1-1/4	1-1/8	7/32	2-1/2	0.60
14	50H14H	H	3.110	2.809	1-1/2	B ₃	1-19/32	1-1/4	1-1/16	5/32	2-1/2	0.60
15	50H15H	H	3.320	3.006	1-1/2	B ₃	1-1/2	1-1/4	1-1/16	5/32	2-1/2	0.80
15	50P15H	P1	3.320	3.006	1-3/4	B ₄	2-3/16	1-15/16	1-19/32		3	1.10
16	50H16H	H	3.520	3.204	1-1/2	B ₃	1-1/2	1-1/4	1-1/16	5/32	2-1/2	0.90
16	50P16H	P1	3.520	3.204	1-3/4	B ₄	2-3/16	1-15/16	1-19/32		3	1.30
17	50H17H	H	3.720	3.401	1-1/2	B ₃	1-1/2	1-1/4	1-1/16	5/32	2-1/2	1.00
17	50P17H	P1	3.720	3.401	1-3/4	B ₄	2-3/16	1-15/16	1-19/32		3	1.40
18	50H18H	H	3.920	3.599	1-1/2	B ₃	1-1/2	1-1/4	1-1/16	5/32	2-1/2	1.00
18	50P18H	P1	3.920	3.599	1-3/4	B ₄	2-3/16	1-15/16	1-19/32		3	1.60
19	50H19H	H	4.120	3.797	1-1/2	B ₃	1-1/2	1-1/4	31/32	1/16	2-1/2	1.10
19	50P19H	P1	4.120	3.797	1-3/4	B ₄	2-3/16	1-15/16	1-19/32		3	1.80
20	50H20H	H	4.320	3.995	1-1/2	B ₃	1-1/2	1-1/4	31/32	1/16	2-1/2	1.50
20	50P20H	P1	4.320	3.995	1-3/4	B ₄	2-3/16	1-15/16	1-19/32		3	2.00
21	50P21H	P1	4.520	4.194	1-3/4	B ₄	2-3/16	1-15/16	1-19/32		3	2.10
22	50P22H	P1	4.700	4.392	1-3/4	B ₄	2-3/16	1-15/16	1-19/32		3	2.30
23	50P23H	P1	4.920	3.599	1-3/4	B ₄	2-3/16	1-15/16	1-19/32		3	2.40
23	50Q23H	Q1	4.920	3.599	2-11/16	B ₄	2-25/32	2-1/2	2-5/32		4-1/8	3.40
24	50P24H	P1	5.120	4.788	1-3/4	B ₄	2-3/16	1-15/16	1-19/32		3	2.50
24	50Q24H	Q1	5.120	4.788	2-11/16	B ₄	2-25/32	2-1/2	2-5/32		4-1/8	3.40
25	50P25H	P1	5.320	4.987	1-3/4	B ₄	2-3/16	1-15/16	1-19/32		3	2.60
25	50Q25H	Q1	5.320	4.987	2-11/16	B ₄	2-25/32	2-1/2	2-5/32		4-1/8	3.70
26	50P26H	P1	5.520	5.185	1-3/4	B ₄	2-3/16	1-15/16	1-19/32		3	2.90
26	50Q26H	Q1	5.520	5.185	2-11/16	B ₄	2-25/32	2-1/2	2-5/32		4-1/8	3.80
27	50P27H	P1	5.720	5.384	1-3/4	B ₄	2-3/16	1-15/16	1-19/32		3	3.00
27	50Q27H	Q1	5.720	5.384	2-11/16	B ₄	2-25/32	2-1/2	2-5/32		4-1/8	3.90
28	50P28H	P1	5.920	5.582	1-3/4	B ₄	2-3/16	1-15/16	1-19/32		3	3.20
28	50Q28H	Q1	5.920	5.582	2-11/16	B ₄	2-25/32	2-1/2	2-5/32		4-1/8	4.00
29	50P29H	P1	6.120	5.781	1-3/4	B ₄	2-3/16	1-15/16	1-19/32		3	3.30
30	50P30H	P1	6.320	5.979	1-3/4	B ₄	2-3/16	1-15/16	1-19/32		3	3.50
30	50Q30H	Q1	6.320	5.979	2-11/16	B ₄	2-25/32	2-1/2	2-5/32		4-1/8	5.60
31	50P31H	P1	6.520	6.178	1-3/4	B ₄	2-3/16	1-15/16	1-19/32		3	3.60
32	50P32H	P1	6.720	6.376	1-3/4	B ₄	2-3/16	1-15/16	1-19/32		3	3.90
32	50Q32H	Q1	6.720	6.376	2-11/16	B ₄	2-25/32	2-1/2	2-5/32		4-1/8	6.10
33	50P33H	P1	6.920	6.575	1-3/4	B ₄	2-3/16	1-15/16	1-19/32		3	4.10
34	50P34H	P1	7.120	6.774	1-3/4	B ₄	2-3/16	1-15/16	1-19/32		3	4.30
35	50P35H	P1	7.320	6.972	1-3/4	B ₄	2-3/16	1-15/16	1-19/32		3	4.30
35	50Q35H	Q1	7.320	6.972	2-11/16	B ₄	2-25/32	2-1/2	2-5/32		4-1/8	6.80
36	50P36H	P1	7.520	7.171	1-3/4	B ₄	2-3/16	1-15/16	1-19/32		3	4.80
36	50Q36H	Q1	7.520	7.171	2-11/16	B ₄	2-25/32	2-1/2	2-5/32		4-1/8	6.80
37	50Q37	Q1	7.720	7.370	2-11/16	B ₄	2-25/32	2-1/2	2-5/32		4-1/8	7.00
38	50Q38	Q1	7.920	7.569	2-11/16	B ₄	2-25/32	2-1/2	2-5/32		4-1/8	7.40
39	50Q39	Q1	8.120	7.767	2-11/16	B ₄	2-25/32	2-1/2	2-5/32		4-1/8	7.60
40	50Q40	Q1	8.320	7.966	2-11/16	B ₄	2-25/32	2-1/2	2-5/32		4-1/8	8.00
41	50Q41	Q1	8.520	8.165	2-11/16	B ₄	2-25/32	2-1/2	2-5/32		4-1/8	8.20
42	50Q42	Q1	8.720	8.363	2-11/16	B ₄	2-25/32	2-1/2	2-5/32		4-1/8	8.30
44	50Q44	Q1	9.110	8.761	2-11/16	B ₄	2-25/32	2-1/2	2-5/32		4-1/8	8.60
45	50Q45	Q1	9.310	8.960	2-11/16	B ₄	2-25/32	2-1/2	2-5/32		4-1/8	9.00
47	50Q47	Q1	9.710	9.357	2-11/16	B ₄	2-25/32	2-1/2	2-5/32		4-1/8	9.30
48	50Q48	Q1	9.910	9.556	2-11/16	B ₄	2-25/32	2-1/2	2-5/32		4-1/8	9.60
50	50Q50	Q1	10.310	9.954	2-11/16	B ₄	2-25/32	2-1/2	2-5/32		4-1/8	9.80
54	50Q54	Q1	11.110	10.749	2-11/16	B ₄	2-25/32	2-1/2	2-5/32		4-1/8	11.30
56	50Q56	Q1	11.500	11.147	2-11/16	B ₄	2-25/32	2-1/2	2-5/32		4-1/8	12.30
60	50Q60	Q1	12.300	11.942	2-11/16	B ₄	2-25/32	2-1/2	2-5/32		4-1/8	13.30
70	50Q70	Q1	14.290	13.931	2-11/16	B ₄	2-25/32	2-1/2	2-5/32		4-1/8	16.90
72	50Q72	Q1	14.690	14.329	2-11/16	B ₄	2-25/32	2-1/2	2-5/32		4-1/8	18.10
80	50Q80	Q1	16.280	15.920	2-11/16	B ₄	2-25/32	2-1/2	2-5/32		4-1/8	21.10
84	50Q84	Q1	17.080	16.715	2-11/16	B ₄	2-25/32	2-1/2	2-5/32		4-1/8	24.30
96	50Q96	Q1	19.470	19.102	2-11/16	B ₄	2-25/32	2-1/2	2-5/32		4-1/8	29.80
112	50Q112	Q1	22.650	22.285	2-11/16	B ₄	2-25/32	2-1/2	2-5/32		4-1/8	39.30



Type B3



Type B4

H - Denotes hardened teeth.

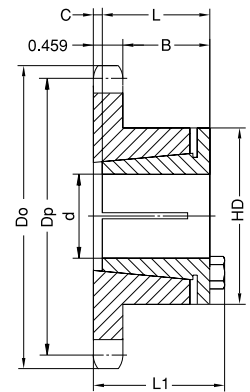
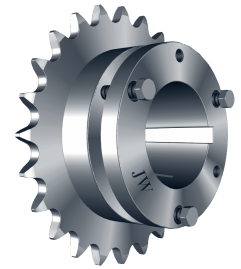
SPLIT-TAPER-BUSHED SPROCKETS

No. 60

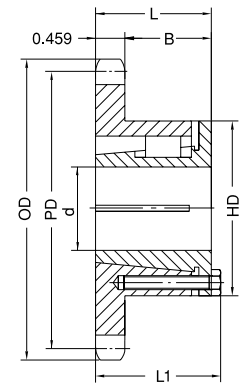
3/4" Pitch

Single Split-Taper-Bushed

No. of Teeth	Part No.	Bushing	OD	PD	Max. Bore d	Type	L1	L	B	C	HD	App. Wt. (Lbs.)
10	60G10H	G	2.760	2.427	1	B ₃	1-3/4	1	1-3/32	9/16	2	0.60
11	60H11H	H	2.960	2.662	1-1/2	B ₃	1-13/16	1-1/4	1-5/32	3/8	2-1/2	0.70
12	60H12H	H	3.250	2.898	1-1/2	B ₃	1-3/4	1-1/4	1-3/32	5/16	2-1/2	0.80
13	60H13H	H	3.450	3.134	1-1/2	B ₃	1-1/2	1-1/4	27/32	1/16	2-1/2	0.80
13	60P13H	P1	3.450	3.134	1-3/4	B ₄	2-3/16	1-15/16	1-15/32		3	1.10
14	60H14H	H	3.740	3.371	1-1/2	B ₃	1-1/2	1-1/4	27/32	1/16	2-1/2	1.00
14	60P14H	P1	3.740	3.371	1-3/4	B ₄	2-3/16	1-15/16	1-15/32		3	1.20
15	60H15H	H	3.980	3.607	1-1/2	B ₃	1-1/2	1-1/4	27/32	1/16	2-1/2	1.20
15	60P15H	P1	3.980	3.607	1-3/4	B ₄	2-3/16	1-15/16	1-15/32		3	1.60
16	60P16H	P1	4.220	3.844	1-3/4	B ₄	2-3/16	1-15/16	1-15/32		3	2.00
17	60P17H	P1	4.460	4.082	1-3/4	B ₄	2-3/16	1-15/16	1-15/32		3	2.20
18	60P18H	P1	4.700	4.319	1-3/4	B ₄	2-3/16	1-15/16	1-15/32		3	2.40
19	60P19H	P1	4.950	4.557	1-3/4	B ₄	2-3/16	1-15/16	1-15/32		3	2.50
20	60P20H	P1	5.190	4.794	1-3/4	B ₄	2-3/16	1-15/16	1-15/32		3	3.00
20	60Q20H	Q1	5.190	4.794	2-11/16	B ₄	2-25/32	2-1/2	2-1/32		4-1/8	3.50
21	60P21H	P1	5.430	5.032	1-3/4	B ₄	2-3/16	1-15/16	1-15/32		3	3.00
21	60Q21H	Q1	5.430	5.032	2-11/16	B ₄	2-25/32	2-1/2	2-1/32		4-1/8	3.80
22	60P22H	P1	5.670	5.270	1-3/4	B ₄	2-3/16	1-15/16	1-15/32		3	3.30
22	60Q22H	Q1	5.670	5.270	2-11/16	B ₄	2-25/32	2-1/2	2-1/32		4-1/8	4.10
23	60P23H	P1	5.910	5.508	1-3/4	B ₄	2-3/16	1-15/16	1-15/32		3	3.50
23	60Q23H	Q1	5.910	5.508	2-11/16	B ₄	2-25/32	2-1/2	2-1/32		4-1/8	4.30
24	60P24H	P1	6.150	5.746	1-3/4	B ₄	2-3/16	1-15/16	1-15/32		3	3.90
24	60Q24H	Q1	6.150	5.746	2-11/16	B ₄	2-25/32	2-1/2	2-1/32		4-1/8	4.50
25	60P25H	P1	6.390	5.984	1-3/4	B ₄	2-3/16	1-15/16	1-15/32		3	4.30
25	60Q25H	Q1	6.390	5.984	2-11/16	B ₄	2-25/32	2-1/2	2-1/32		4-1/8	6.00
26	60P26H	P1	6.630	6.222	1-3/4	B ₄	2-3/16	1-15/16	1-15/32		3	4.30
26	60Q26H	Q1	6.630	6.222	2-11/16	B ₄	2-25/32	2-1/2	2-1/32		4-1/8	6.40
27	60P27H	P1	6.870	6.460	1-3/4	B ₄	2-3/16	1-15/16	1-15/32		3	4.60
27	60Q27H	Q1	6.870	6.460	2-11/16	B ₄	2-25/32	2-1/2	2-1/32		4-1/8	6.60
28	60P28H	P1	7.110	6.699	1-3/4	B ₄	2-3/16	1-15/16	1-15/32		3	5.00
28	60Q28H	Q1	7.110	6.699	2-11/16	B ₄	2-25/32	2-1/2	2-1/32		4-1/8	6.90
29	60Q29H	Q1	7.350	6.937	2-11/16	B ₄	2-25/32	2-1/2	2-1/32		4-1/8	7.30
30	60P30H	P1	7.590	7.175	1-3/4	B ₄	2-3/16	1-15/16	1-15/32		3	5.60
30	60Q30H	Q1	7.590	7.175	2-11/16	B ₄	2-25/32	2-1/2	2-1/32		4-1/8	7.70
31	60Q31H	Q1	7.830	7.413	2-11/16	B ₄	2-25/32	2-1/2	2-1/32		4-1/8	7.80
32	60Q32H	Q1	8.070	7.652	2-11/16	B ₄	2-25/32	2-1/2	2-1/32		4-1/8	8.30
33	60Q33H	Q1	8.300	7.890	2-11/16	B ₄	2-25/32	2-1/2	2-1/32		4-1/8	8.70
34	60Q34H	Q1	8.540	8.129	2-11/16	B ₄	2-25/32	2-1/2	2-1/32		4-1/8	9.10
35	60Q35H	Q1	8.780	8.367	2-11/16	B ₄	2-25/32	2-1/2	2-1/32		4-1/8	9.30
36	60Q36H	Q1	9.020	8.605	2-11/16	B ₄	2-25/32	2-1/2	2-1/32		4-1/8	9.90
37	60Q37	Q1	9.260	8.844	2-11/16	B ₄	2-25/32	2-1/2	2-1/32		4-1/8	10.30
38	60Q38	Q1	9.500	9.082	2-11/16	B ₄	2-25/32	2-1/2	2-1/32		4-1/8	10.60
39	60Q39	Q1	9.740	9.321	2-11/16	B ₄	2-25/32	2-1/2	2-1/32		4-1/8	11.10
40	60Q40	Q1	9.980	9.559	2-11/16	B ₄	2-25/32	2-1/2	2-1/32		4-1/8	11.60
41	60Q41	Q1	10.220	9.798	2-11/16	B ₄	2-25/32	2-1/2	2-1/32		4-1/8	11.90
42	60Q42	Q1	10.460	10.036	2-11/16	B ₄	2-25/32	2-1/2	2-1/32		4-1/8	12.60
44	60Q44	Q1	10.940	10.513	2-11/16	B ₄	2-25/32	2-1/2	2-1/32		4-1/8	13.40
45	60Q45	Q1	11.180	10.752	2-11/16	B ₄	2-25/32	2-1/2	2-1/32		4-1/8	13.90
47	60Q47	Q1	11.650	11.229	2-11/16	B ₄	2-25/32	2-1/2	2-1/32		4-1/8	16.30
48	60Q48	Q1	11.890	11.467	2-11/16	B ₄	2-25/32	2-1/2	2-1/32		4-1/8	16.40
50	60Q50	Q1	12.370	11.945	2-11/16	B ₄	2-25/32	2-1/2	2-1/32		4-1/8	16.90
54	60Q54	Q1	13.330	12.899	2-11/16	B ₄	2-25/32	2-1/2	2-1/32		4-1/8	19.60
56	60Q56	Q1	13.810	13.376	2-11/16	B ₄	2-25/32	2-1/2	2-1/32		4-1/8	20.30
60	60Q60	Q1	14.730	14.331	2-11/16	B ₄	2-25/32	2-1/2	2-1/32		4-1/8	22.90
70	60Q70	Q1	17.120	16.717	2-11/16	B ₄	2-25/32	2-1/2	2-1/32		4-1/8	30.90
70	60R70	R1	17.120	16.717	3-3/4	B ₄	3-5/32	2-7/8	2-13/32		5-3/8	31.80
72	60Q72	Q1	17.630	17.194	2-11/16	B ₄	2-25/32	2-1/2	2-1/32		4-1/8	31.90
72	60R72	R1	17.630	17.194	3-3/4	B ₄	3-5/32	2-7/8	2-13/32		5-3/8	34.10
80	60Q80	Q1	19.540	19.103	2-11/16	B ₄	2-25/32	2-1/2	2-1/32		4-1/8	39.10
80	60R80	R1	19.540	19.103	3-3/4	B ₄	3-5/32	2-7/8	2-13/32		5-3/8	41.50
84	60Q84	Q1	20.490	20.058	2-11/16	B ₄	2-25/32	2-1/2	2-1/32		4-1/8	41.60
84	60R84	R1	20.490	20.058	3-3/4	B ₄	3-5/32	2-7/8	2-13/32		5-3/8	44.80
96	60Q96	Q1	23.360	22.922	2-11/16	B ₄	2-25/32	2-1/2	2-1/32		4-1/8	54.00
96	60R96	R1	23.360	22.922	3-3/4	B ₄	3-5/32	2-7/8	2-13/32		5-3/8	56.00
112	60Q112	Q1	27.180	26.742	2-11/16	B ₄	2-25/32	2-1/2	2-1/32		4-1/8	73.00
112	60R112	R1	27.180	26.742	3-3/4	B ₄	3-5/32	2-7/8	2-13/32		5-3/8	74.50



Type B₃



Type B₄

H - Denotes hardened teeth.

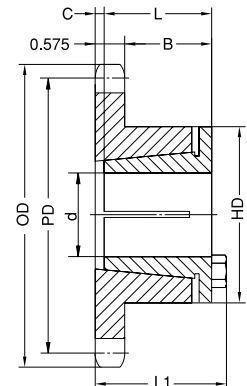
No. 80

SPLIT-TAPER-BUSHED SPROCKETS

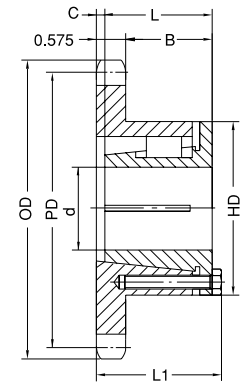
1" Pitch

Single Split-Taper-Bushed

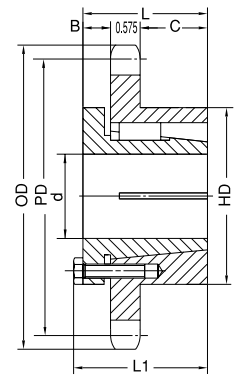
No. of Teeth	Part No.	Bushing	OD	PD	Max. Bore d	Type	L1	L	B	C	HD	App. Wt. (Lbs.)
10	80H10H	H	3.680	3.236	1-1/2	B ₃	2-3/32	1	1-21/64	21/32	2-1/2	2.00
11	80H11H	H	3.980	3.550	1-1/2	B ₃	1-1/2	1	3/4	1/16	2-1/2	1.30
11	80P11H	P1	3.980	3.550	1-3/4	B ₄	2-11/32	1-15/16	1-17/32	5/32	3	1.80
12	80P12H	P1	4.330	3.864	1-3/4	B ₄	2-3/16	1-15/16	1-3/8		3	2.00
13	80P13H	P1	4.660	4.179	1-3/4	B ₄	2-3/16	1-15/16	1-3/8		3	2.30
14	80P14H	P1	4.980	4.494	1-3/4	B ₄	2-3/16	1-15/16	1-3/8		3	2.70
14	80Q14H	Q1	4.980	4.494	2-11/16	B ₄	2-25/32	2-1/2	1-15/16		4-1/8	3.00
15	80P15H	P1	5.310	4.810	1-3/4	B ₄	2-3/16	1-15/16	1-3/8		3	3.20
15	80Q15H	Q1	5.310	4.810	2-11/16	B ₄	2-25/32	2-1/2	1-15/16		4-1/8	3.60
16	80P16H	P1	5.630	5.126	1-3/4	B ₄	2-3/16	1-15/16	1-3/8		3	3.60
16	80Q16H	Q1	5.630	5.126	2-11/16	B ₄	2-25/32	2-1/2	1-15/16		4-1/8	4.60
17	80P17H	P1	5.950	5.442	1-3/4	B ₄	2-3/16	1-15/16	1-3/8		3	3.90
17	80Q17H	Q1	5.950	5.442	2-11/16	B ₄	2-25/32	2-1/2	1-15/16		4-1/8	5.40
18	80P18H	P1	6.270	5.759	1-3/4	B ₄	2-3/16	1-15/16	1-3/8		3	4.50
18	80Q18H	Q1	6.270	5.759	2-11/16	B ₄	2-25/32	2-1/2	1-15/16		4-1/8	6.00
19	80P19H	P1	6.590	6.079	1-3/4	B ₄	2-3/16	1-15/16	1-3/8		3	4.80
19	80Q19H	Q1	6.590	6.079	2-11/16	B ₄	2-25/32	2-1/2	1-15/16		4-1/8	6.40
20	80Q20H	Q1	6.910	6.392	2-11/16	B ₄	2-25/32	2-1/2	1-15/16		4-1/8	6.90
21	80Q21H	Q1	7.240	6.710	2-11/16	B ₄	2-25/32	2-1/2	1-15/16		4-1/8	7.40
22	80Q22H	Q1	7.560	7.027	2-11/16	B ₄	2-25/32	2-1/2	1-15/16		4-1/8	8.00
23	80Q23H	Q1	7.880	7.344	2-11/16	B ₄	2-25/32	2-1/2	1-15/16		4-1/8	8.50
24	80Q24H	Q1	8.200	7.661	2-11/16	B ₄	2-25/32	2-1/2	1-15/16		4-1/8	9.30
25	80Q25H	Q1	8.520	7.979	2-11/16	B ₄	2-25/32	2-1/2	1-15/16		4-1/8	9.90
26	80Q26H	Q1	8.840	8.296	2-11/16	B ₄	2-25/32	2-1/2	1-15/16		4-1/8	10.40
27	80Q27H	Q1	9.160	8.614	2-11/16	B ₄	2-25/32	2-1/2	1-15/16		4-1/8	10.90
28	80Q28H	Q1	9.480	8.931	2-11/16	B ₄	2-25/32	2-1/2	1-15/16		4-1/8	11.50
29	80Q29H	Q1	9.800	9.567	2-11/16	B ₄	2-25/32	2-1/2	1-15/16		4-1/8	12.50
30	80Q30H	Q1	10.110	9.567	2-11/16	B ₄	2-25/32	2-1/2	1-15/16		4-1/8	13.00
31	80Q31H	Q1	10.430	9.885	2-11/16	B ₄	2-25/32	2-1/2	1-15/16		4-1/8	13.90
32	80Q32H	Q1	10.750	10.202	2-11/16	B ₄	2-25/32	2-1/2	1-15/16		4-1/8	14.80
33	80Q33H	Q1	11.070	10.520	2-11/16	B ₄	2-25/32	2-1/2	1-15/16		4-1/8	15.50
34	80Q34H	Q1	11.390	10.838	2-11/16	B ₄	2-25/32	2-1/2	1-15/16		4-1/8	16.30
35	80Q35H	Q1	11.710	11.156	2-11/16	B ₄	2-25/32	2-1/2	1-15/16		4-1/8	17.80
36	80Q36H	Q1	11.980	11.474	2-11/16	B ₄	2-25/32	2-1/2	1-15/16		4-1/8	18.10
36	80R36H	R1	11.980	11.474	3-3/4	B ₄	3-5/32	2-7/8	2-5/16		5-3/8	19.50
37	80Q37	Q1	12.350	11.792	2-11/16	B ₄	2-25/32	2-1/2	1-15/16		4-1/8	18.50
38	80Q38	Q1	12.670	12.110	2-11/16	B ₄	2-25/32	2-1/2	1-15/16		4-1/8	20.00
39	80R39	R1	12.990	12.428	3-3/4	B ₄	3-5/32	2-7/8	2-5/16		5-3/8	22.80
40	80Q40	Q1	13.310	12.746	2-11/16	B ₄	2-25/32	2-1/2	1-15/16		4-1/8	21.90
40	80R40	R1	13.310	12.746	3-3/4	B ₄	3-5/32	2-7/8	2-5/16		5-3/8	23.40
41	80R41	R1	13.630	13.064	3-3/4	B ₄	3-5/32	2-7/8	2-5/16		5-3/8	23.90
42	80Q42	Q1	13.940	13.382	2-11/16	B ₄	2-25/32	2-1/2	1-15/16		4-1/8	23.80
42	80R42	R1	13.940	13.382	3-3/4	B ₄	3-5/32	2-7/8	2-5/16		5-3/8	25.40
44	80R44	R1	14.580	14.018	3-3/4	B ₄	3-5/32	2-7/8	2-5/16		5-3/8	27.20
45	80Q45	Q1	14.900	14.336	2-11/16	B ₄	2-25/32	2-1/2	1-15/16		4-1/8	27.80
45	80R45	R1	14.900	14.336	3-3/4	B ₄	3-5/32	2-7/8	2-5/16		5-3/8	28.50
47	80R47	R1	15.540	14.972	3-3/4	B ₄	3-5/32	2-7/8	2-5/16		5-3/8	31.00
48	80Q48	Q1	15.860	15.290	2-11/16	B ₄	2-25/32	2-1/2	1-15/16		4-1/8	30.80
48	80R48	R1	15.860	15.290	3-3/4	B ₄	3-5/32	2-7/8	2-5/16		5-3/8	32.30
50	80R50	R1	16.500	15.926	3-3/4	B ₄	3-5/32	2-7/8	2-5/16		5-3/8	35.10
54	80Q54	Q1	17.770	17.198	2-11/16	B ₄	2-25/32	2-1/2	1-15/16		4-1/8	38.50
54	80R54	R1	17.770	17.198	3-3/4	B ₄	3-5/32	2-7/8	2-5/16		5-3/8	40.80
56	80R56	R1	18.410	17.835	3-3/4	B ₄	3-5/32	2-7/8	2-5/16		5-3/8	44.00
60	80Q60	Q1	19.680	19.107	2-11/16	B ₄	2-25/32	2-1/2	1-15/16		4-1/8	46.80
60	80R60	R1	19.680	19.107	3-3/4	B ₄	3-5/32	2-7/8	2-5/16		5-3/8	47.30
70	80Q70	Q1	22.830	22.289	2-11/16	B ₄	2-25/32	2-1/2	2-5/16		4-1/8	60.00
70	80R70	R1	22.830	22.289	3-3/4	B ₄	3-5/32	2-7/8	2-5/16		5-3/8	63.50
72	80Q72	Q1	23.460	22.926	2-11/16	B ₄	2-25/32	2-1/2	2-5/16		4-1/8	67.50
72	80R72	R1	23.460	22.926	3-3/4	B ₅	3-5/32	2-7/8	7/8	1-7/16	5-3/8	69.40
80	80R80	R1	26.010	25.471	3-3/4	B ₅	3-5/32	2-7/8	7/8	1-7/16	5-3/8	85.00
84	80R84	R1	27.330	26.744	3-3/4	B ₅	3-5/32	2-7/8	7/8	1-7/16	5-3/8	90.00
96	80R96	R1	31.150	30.563	3-3/4	B ₅	3-5/32	2-7/8	7/8	1-7/16	5-3/8	110.00
112	80S112	S1	36.240	35.655	4-1/4	B ₅	4-3/4	4-3/8	1-1/8	2-3/4	6-3/8	165.00



Type B₃



Type B₄



Type B₅

H - Denotes hardened teeth.

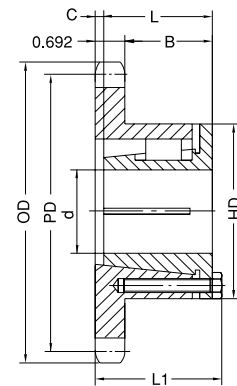
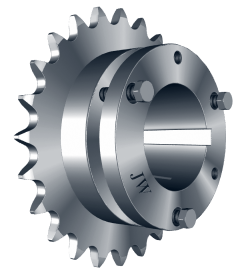
SPLIT-TAPER-BUSHED SPROCKETS

No. 100

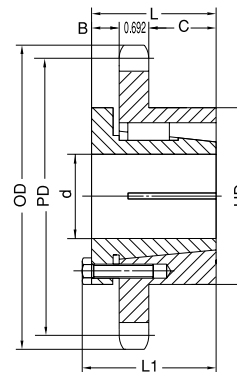
1-1/4" Pitch

Single Split-Taper-Bushed

No. of Teeth	Part No.	Bushing	OD	PD	Max. Bore d	Type	L1	L	B	C	HD	App. Wt. (Lbs.)
11	100P11H	P1	5.010	4.437	1-3/4	B ₄	2-3/16	1-15/16	1-1/4		3	3.00
12	100Q12H	Q1	5.420	4.830	2-11/16	B ₄	2-27/32	2-1/2	1-7/8	1/16	4-1/8	3.50
13	100Q13H	Q1	5.820	5.223	2-11/16	B ₄	2-27/32	2-1/2	1-7/8	1/16	4-1/8	4.30
14	100Q14H	Q1	6.230	5.617	2-11/16	B ₄	2-25/32	2-1/2	1-13/16		4-1/8	5.60
15	100Q15H	Q1	6.630	6.012	2-11/16	B ₄	2-25/32	2-1/2	1-13/16		4-1/8	6.50
16	100Q16H	Q1	7.030	6.407	2-11/16	B ₄	2-25/32	2-1/2	1-13/16		4-1/8	7.40
17	100Q17H	Q1	7.440	6.803	2-11/16	B ₄	2-25/32	2-1/2	1-13/16		4-1/8	8.20
18	100Q18H	Q1	7.840	7.198	2-11/16	B ₄	2-25/32	2-1/2	1-13/16		4-1/8	9.00
19	100Q19H	Q1	8.240	7.595	2-11/16	B ₄	2-25/32	2-1/2	1-13/16		4-1/8	9.90
20	100Q20H	Q1	8.640	7.991	2-11/16	B ₄	2-25/32	2-1/2	1-13/16		4-1/8	10.80
21	100Q21H	Q1	9.040	8.387	2-11/16	B ₄	2-25/32	2-1/2	1-13/16		4-1/8	11.70
21	100R21H	R1	9.040	8.387	3-3/4	B ₄	3-5/32	2-7/8	2-3/16		5-3/8	13.30
22	100Q22H	Q1	9.440	8.783	2-11/16	B ₄	2-25/32	2-1/2	1-13/16		4-1/8	12.50
23	100Q23H	Q1	9.840	9.180	2-11/16	B ₄	2-25/32	2-1/2	1-13/16		4-1/8	13.90
24	100Q24H	Q1	10.250	9.577	2-11/16	B ₄	2-25/32	2-1/2	1-13/16		4-1/8	15.50
24	100R24H	R1	10.250	9.577	3-3/4	B ₄	3-5/32	2-7/8	2-3/16		5-3/8	16.10
25	100Q25H	Q1	10.650	9.973	2-11/16	B ₄	2-25/32	2-1/2	1-13/16		4-1/8	16.20
25	100R25H	R1	10.650	9.973	3-3/4	B ₄	3-5/32	2-7/8	2-3/16		5-3/8	17.00
26	100Q26H	Q1	11.050	10.370	2-11/16	B ₄	2-25/32	2-1/2	1-13/16		4-1/8	17.90
26	100R26H	R1	11.050	10.370	3-3/4	B ₄	3-5/32	2-7/8	2-3/16		5-3/8	18.50
27	100Q27H	Q1	11.450	10.767	2-11/16	B ₄	2-25/32	2-1/2	1-13/16		4-1/8	18.20
27	100R27H	R1	11.450	10.767	3-3/4	B ₄	3-5/32	2-7/8	2-3/16		5-3/8	19.60
28	100Q28H	Q1	11.840	11.164	2-11/16	B ₄	2-25/32	2-1/2	1-13/16		4-1/8	19.90
28	100R28H	R1	11.840	11.164	3-3/4	B ₄	3-5/32	2-7/8	2-3/16		5-3/8	21.00
30	100Q30H	Q1	12.640	11.958	2-11/16	B ₄	2-25/32	2-1/2	1-13/16		4-1/8	22.60
30	100R30H	R1	12.640	11.958	3-3/4	B ₄	3-5/32	2-7/8	2-3/16		5-3/8	24.50
31	100R31H	R1	13.040	12.356	3-3/4	B ₄	3-5/32	2-7/8	2-3/16		5-3/8	25.80
32	100Q32H	Q1	13.440	12.753	2-11/16	B ₄	2-25/32	2-1/2	1-13/16		4-1/8	25.30
32	100R32	R1	13.440	12.753	3-3/4	B ₄	3-5/32	2-7/8	2-3/16		5-3/8	26.50
35	100Q35	Q1	14.640	13.945	2-11/16	B ₄	2-25/32	2-1/2	1-13/16		4-1/8	30.20
35	100R35	R1	14.640	13.945	3-3/4	B ₄	3-5/32	2-7/8	2-3/16		5-3/8	29.80
36	100R36	R1	15.040	14.342	3-3/4	B ₄	3-5/32	2-7/8	2-3/16		5-3/8	33.00
40	100R40	R1	16.630	15.932	3-3/4	B ₄	3-5/32	2-7/8	2-3/16		5-3/8	40.90
42	100R42	R1	17.430	16.727	3-3/4	B ₄	3-5/32	2-7/8	2-3/16		5-3/8	44.30
45	100R45	R1	18.630	17.920	3-3/4	B ₄	3-5/32	2-7/8	2-3/16		5-3/8	50.50
48	100R48	R1	19.820	19.112	3-3/4	B ₄	3-5/32	2-7/8	2-3/16		5-3/8	57.50
54	100R54	R1	22.210	21.498	3-3/4	B ₅	3-5/32	2-7/8	7/8	1-5/16	5-3/8	69.00
60	100R60	R1	24.550	23.884	3-3/4	B ₅	3-5/32	2-7/8	7/8	1-5/16	5-3/8	84.00
70	100R70	R1	28.530	27.862	3-3/4	B ₅	3-5/32	2-7/8	7/8	1-5/16	5-3/8	104.00
72	100R72	R1	29.330	28.657	3-3/4	B ₅	3-5/32	2-7/8	7/8	1-5/16	5-3/8	106.00
80	100R80	R1	32.520	31.839	3-3/4	B ₅	3-5/32	2-7/8	7/8	1-5/16	5-3/8	135.00
84	100R84	R1	34.110	33.430	3-3/4	B ₅	3-5/32	2-7/8	7/8	1-5/16	5-3/8	138.00



Type B₄



Type B₅

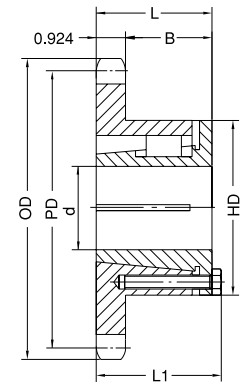
H - Denotes hardened teeth.

No. 120 SPLIT-TAPER-BUSHED SPROCKETS

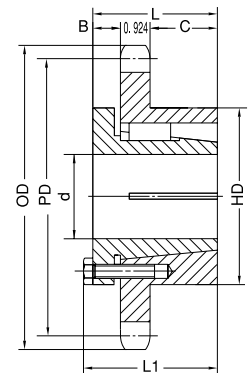
1-1/2" Pitch

Single Split-Taper-Bushed

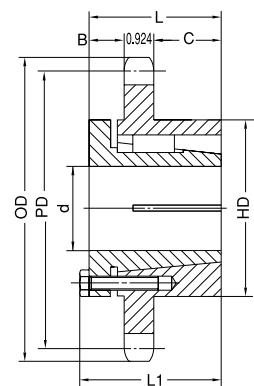
No. of Teeth	Part No.	Bushing	OD	PD	Max. Bore d	Type	L1	L	B	C	HD	App. Wt. (Lbs.)
11	120Q11H	Q1	6.010	5.324	2-11/16	B ₄	2-25/32	2-1/2	1-9/16		4-1/8	4.80
12	120Q12H	Q1	6.500	5.796	2-11/16	B ₄	2-25/32	2-1/2	1-9/16		4-1/8	6.30
13	120Q13H	Q1	6.990	6.268	2-11/16	B ₄	2-25/32	2-1/2	1-9/16		4-1/8	7.90
14	120Q14H	Q1	7.470	6.741	2-11/16	B ₄	2-25/32	2-1/2	1-9/16		4-1/8	9.10
15	120Q15H	Q1	7.960	7.215	2-11/16	B ₄	2-25/32	2-1/2	1-9/16		4-1/8	10.40
16	120Q16H	Q1	8.390	7.689	2-11/16	B ₄	2-25/32	2-1/2	1-9/16		4-1/8	11.80
16	120R16H	R1	8.390	7.689	3-3/4	B ₄	3-5/32	2-7/8	1-15/16		5-3/8	12.30
17	120Q17H	Q1	8.880	8.163	2-11/16	B ₄	2-25/32	2-1/2	1-9/16		4-1/8	13.40
17	120R17H	R1	8.880	8.163	3-3/4	B ₄	3-5/32	2-7/8	1-15/16		5-3/8	13.60
18	120Q18H	Q1	9.410	8.638	2-11/16	B ₄	2-25/32	2-1/2	1-9/16		4-1/8	15.60
18	120R18H	R1	9.410	8.638	3-3/4	B ₄	3-5/32	2-7/8	1-9/16		5-3/8	15.90
19	120R19H	R1	9.890	9.113	3-3/4	B ₄	3-5/32	2-7/8	1-9/16		5-3/8	16.80
20	120R20H	R1	10.370	9.589	3-3/4	B ₄	3-5/32	2-7/8	1-15/16		5-3/8	18.80
21	120R21H	R1	10.850	10.064	3-3/4	B ₄	3-5/32	2-7/8	1-15/16		5-3/8	21.00
22	120R22H	R1	11.330	10.540	3-3/4	B ₄	3-5/32	2-7/8	1-15/16		5-3/8	22.50
23	120R23H	R1	11.810	11.016	3-3/4	B ₄	3-5/32	2-7/8	1-15/16		5-3/8	24.80
24	120R24H	R1	12.290	11.492	3-3/4	B ₄	3-5/32	2-7/8	1-15/16		5-3/8	26.90
25	120R25H	R1	12.770	11.968	3-3/4	B ₄	3-5/32	2-7/8	1-15/16		5-3/8	29.80
26	120R26H	R1	13.250	12.444	3-3/4	B ₅	3-5/32	2-7/8	7/8	1-1/16	5-3/8	32.90
28	120R28	R1	14.210	13.397	3-3/4	B ₅	3-5/32	2-7/8	7/8	1-1/16	5-3/8	38.30
30	120R30	R1	15.170	14.350	3-3/4	B ₅	3-5/32	2-7/8	7/8	1-1/16	5-3/8	43.40
32	120R32	R1	16.130	15.303	3-3/4	B ₅	3-5/32	2-7/8	7/8	1-1/16	5-3/8	49.40
35	120R35	R2	17.570	16.734	3-5/8	B ₆	5-5/32	4-7/8	1-15/16	2	5-3/8	68.00
36	120R36	R2	18.050	17.211	3-5/8	B ₆	5-5/32	4-7/8	1-15/16	2	5-3/8	72.00
40	120R40	R2	19.960	19.118	3-5/8	B ₆	5-5/32	4-7/8	1-15/16	2	5-3/8	82.00
40	120S40	S1	19.960	19.118	4-1/4	B ₅	4-3/4	4-3/8	1-1/16	2-3/8	6-3/8	83.00
42	120S42	S1	20.920	20.072	4-1/4	B ₅	4-3/4	4-3/8	1-1/16	2-3/8	6-3/8	90.00
45	120R45	R2	22.350	21.503	3-5/8	B ₆	5-5/32	4-7/8	1-15/16	2	5-3/8	102.00
45	120S45	S1	22.350	21.503	4-1/4	B ₅	4-3/4	4-3/8	1-1/16	2-3/8	6-3/8	100.00
48	120S48	S1	23.790	22.935	4-1/4	B ₅	4-3/4	4-3/8	1-1/16	2-3/8	6-3/8	111.00
54	120S54	S1	26.650	25.798	4-1/4	B ₅	4-3/4	4-3/8	1-1/16	2-3/8	6-3/8	138.00
60	120R60	R2	29.520	28.661	3-5/8	B ₆	5-5/32	4-7/8	1-15/16	2	5-3/8	179.00
60	120S60	S1	29.520	28.661	4-1/4	B ₅	4-3/4	4-3/8	1-1/16	2-3/8	6-3/8	180.00
70	120R70	R2	34.300	33.434	3-5/8	B ₆	5-5/32	4-7/8	1-15/16	2	5-3/8	148.00
70	120S70	S2	34.300	33.434	4-3/16	B ₅	7-1/8	6-3/4	2-15/16	2-7/8	6-3/8	167.00
80	120R80	R2	39.080	38.207	3-5/8	B ₆	5-5/32	4-7/8	1-15/16	2	5-3/8	291.00
80	120S80	S2	39.080	38.207	4-3/16	B ₆	7-1/8	6-3/4	2-15/16	2-7/8	6-3/8	305.00



Type B₄



Type B₅



Type B₆

H - Denotes hardened teeth.

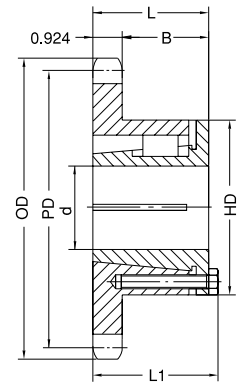
SPLIT-TAPER-BUSHED SPROCKETS

No. 140

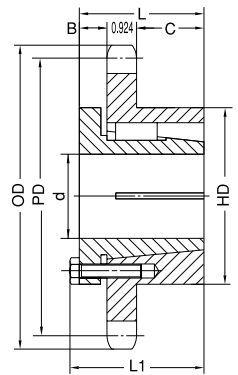
1-3/4" Pitch

Single Split-Taper-Bushed

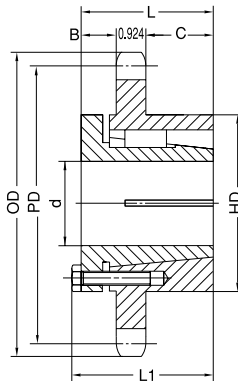
No. of Teeth	Part No.	Bushing	OD	PD	Max. Bore d	Type	L1	L	B	C	HD	App. Wt. (Lbs.)
11	140Q11H	Q1	7.010	6.212	2-11/16	B ₄	2-25/32	2-1/2	1-9/16		4-1/8	6.40
12	140Q12H	Q1	7.580	6.762	2-11/16	B ₄	2-25/32	2-1/2	1-9/16		4-1/8	9.00
13	140R13H	R1	8.150	7.313	3-3/4	B ₄	3-5/32	2-7/8	1-15/16		5-3/8	11.10
14	140R14H	R1	8.720	7.864	3-3/4	B ₄	3-5/32	2-7/8	1-15/16		5-3/8	12.60
15	140R15H	R1	9.280	8.417	3-3/4	B ₄	3-5/32	2-7/8	1-15/16		5-3/8	14.70
16	140R16H	R1	9.850	8.970	3-3/4	B ₄	3-5/32	2-7/8	1-15/16		5-3/8	16.50
17	140R17H	R1	10.410	9.524	3-3/4	B ₄	3-5/32	2-7/8	1-15/16		5-3/8	18.50
18	140R18H	R1	10.970	10.078	3-3/4	B ₄	3-5/32	2-7/8	1-15/16		5-3/8	20.50
19	140R19H	R1	11.540	10.632	3-3/4	B ₄	3-5/32	2-7/8	1-15/16		5-3/8	23.00
20	140R20H	R1	12.100	11.187	3-3/4	B ₄	3-5/32	2-7/8	1-15/16		5-3/8	25.40
21	140R21H	R1	12.660	11.742	3-3/4	B ₄	3-5/32	2-7/8	1-15/16		5-3/8	27.80
22	140R22	R1	13.220	12.297	3-3/4	B ₅	3-5/32	2-7/8	7/8	1-1/16	5-3/8	32.50
23	140R23	R1	13.780	12.852	3-3/4	B ₅	3-5/32	2-7/8	7/8	1-1/16	5-3/8	36.00
24	140R24	R1	14.340	13.407	3-3/4	B ₅	3-5/32	2-7/8	7/8	1-1/16	5-3/8	37.60
25	140R25	R1	14.900	13.963	3-3/4	B ₅	3-5/32	2-7/8	7/8	1-1/16	5-3/8	40.30
26	140R26	R1	15.460	14.513	3-3/4	B ₅	3-5/32	2-7/8	7/8	1-1/16	5-3/8	44.00
30	140R30	R2	17.700	16.742	3-5/8	B ₆	5-5/32	4-7/8	7/8	2	5-3/8	68.00
35	140R35	R2	20.490	19.523	3-5/8	B ₆	5-5/32	4-7/8	7/8	2	5-3/8	88.00
36	140R36	R2	21.050	20.079	3-5/8	B ₆	5-5/32	4-7/8	7/8	2	5-3/8	90.00
36	140S36	S1	21.050	20.079	4-1/4	B ₅	4-3/4	4-3/8	1-1/16	2-3/8	6-3/8	89.00
40	140R40	R2	23.290	22.305	3-5/8	B ₆	5-5/32	4-7/8	7/8	2	5-3/8	109.00
40	140S40	S1	23.290	22.305	4-1/4	B ₅	4-3/4	4-3/8	1-1/16	2-3/8	6-3/8	107.00
45	140S45	S1	26.080	25.087	4-1/4	B ₅	4-3/4	4-3/8	1-1/16	2-3/8	6-3/8	132.00
48	140S48	S2	27.750	26.757	4-3/16	B ₆	7-1/2	6-3/4	2-15/16	2-7/8	6-3/8	169.00
54	140S54	S2	31.100	30.097	4-3/16	B ₆	7-1/2	6-3/4	2-15/16	2-7/8	6-3/8	208.00
60	140S60	S2	34.440	33.438	4-3/16	B ₆	7-1/2	6-3/4	2-15/16	2-7/8	6-3/8	230.00
70	140S70	S2	40.020	39.006	4-3/16	B ₆	7-1/2	6-3/4	2-15/16	2-7/8	6-3/8	311.00
80	140S80	S2	45.590	44.575	4-3/16	B ₆	7-1/2	6-3/4	2-15/16	2-7/8	6-3/8	242.00



Type B₄



Type B₅



Type B₆

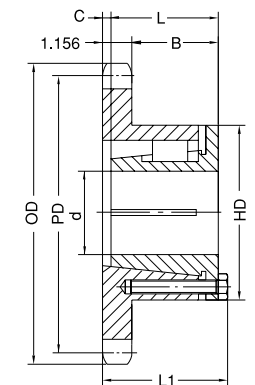
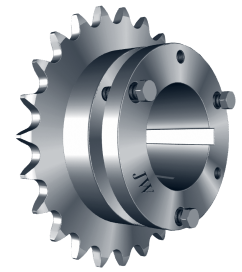
H - Denotes hardened teeth.

No. 160 SPLIT-TAPER-BUSHED SPROCKETS

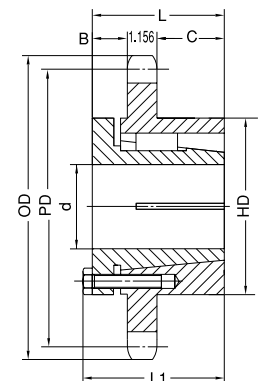
2" Pitch

Single Split-Taper-Bushed

No. of Teeth	Part No.	Bushing	OD	PD	Max. Bore d	Type	L1	L	B	C	HD	App. Wt. (Lbs.)
11	160R11H	R1	8.010	7.099	3-3/4	B ₄	3-13/32	2-7/8	1-31/32	1/4	5-3/8	10.80
12	160R12H	R1	8.660	7.727	3-3/4	B ₄	3-13/32	2-7/8	1-31/32	1/4	5-3/8	14.20
13	160R13H	R1	9.310	8.357	3-3/4	B ₄	3-5/32	2-7/8	1-23/32		5-3/8	15.50
14	160R14H	R1	9.960	8.988	3-3/4	B ₄	3-5/32	2-7/8	1-23/32		5-3/8	18.50
15	160R15H	R1	10.610	9.620	3-3/4	B ₄	3-5/32	2-7/8	1-23/32		5-3/8	21.60
16	160R16H	R1	11.250	10.252	3-3/4	B ₄	3-5/32	2-7/8	1-23/32		5-3/8	25.00
17	160R17H	R1	11.900	10.885	3-3/4	B ₄	3-5/32	2-7/8	1-23/32		5-3/8	28.00
18	160R18H	R1	12.540	11.518	3-3/4	B ₄	3-5/32	2-7/8	1-23/32		5-3/8	31.90
19	160R19H	R1	13.190	12.151	3-3/4	B ₄	3-5/32	2-7/8	1-23/32		5-3/8	35.90
20	160R20H	R2	13.830	12.785	3-5/8	B ₆	5-5/32	4-7/8	1-23/32	2	5-3/8	51.00
21	160R21	R2	14.470	13.419	3-5/8	B ₆	5-5/32	4-7/8	1-23/32	2	5-3/8	56.00
22	160R22	R2	15.110	14.053	3-5/8	B ₆	5-5/32	4-7/8	1-23/32	2	5-3/8	60.00
23	160R23	R2	15.750	14.688	3-5/8	B ₆	5-5/32	4-7/8	1-23/32	2	5-3/8	65.00
24	160R24	R2	16.390	15.323	3-5/8	B ₆	5-5/32	4-7/8	1-23/32	2	5-3/8	71.50
25	160R25	R2	17.030	15.958	3-5/8	B ₆	5-5/32	4-7/8	1-23/32	2	5-3/8	74.00
26	160R26	R2	17.670	16.593	3-5/8	B ₆	5-5/32	4-7/8	1-23/32	2	5-3/8	79.00
28	160R28	R2	18.950	17.863	3-5/8	B ₆	5-5/32	4-7/8	1-23/32	2	5-3/8	99.80
30	160R30	R2	20.230	19.134	3-5/8	B ₆	5-5/32	4-7/8	1-23/32	2	5-3/8	106.00
30	160S30	S2	20.230	19.134	4-3/16	B ₆	7-1/8	6-3/4	2-23/32	2-7/8	6-3/8	115.00
35	160S35	S2	23.420	22.312	4-3/16	B ₆	7-1/8	6-3/4	2-23/32	2-7/8	6-3/8	150.00
40	160S40	S2	26.610	25.491	4-3/16	B ₆	7-1/8	6-3/4	2-23/32	2-7/8	6-3/8	165.00
45	160S45	S2	29.800	28.671	4-3/16	B ₆	7-1/8	6-3/4	2-23/32	2-7/8	6-3/8	204.00
60	160U60	U0	39.360	38.215	5-1/2	B ₆	5-25/32	5-1/4	1-21/32	1-15/16	8-3/8	354.00
70	160U70	U0	45.730	44.578	5-1/2	B ₆	5-25/32	5-1/4	1-21/32	1-15/16	8-3/8	308.00
80	160U80	U1	52.100	50.943	5-1/2	B ₆	7-19/32	7-1/8	2-19/32	2-7/8	8-3/8	394.00



Type B₄



Type B₆

H - Denotes hardened teeth.

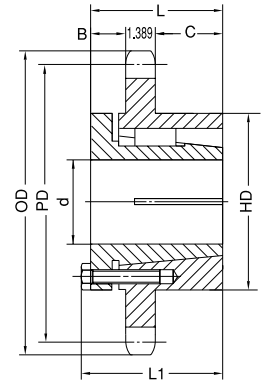
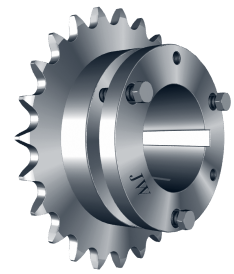
SPLIT-TAPER-BUSHED SPROCKETS

No. 200

2-1/2" Pitch

Single Split-Taper-Bushed

No. of Teeth	Part No.	Bushing	OD	PD	Max. Bore d	Type	L1	L	B	C	HD	App. Wt. (Lbs.)
12	200R12	R2	10.830	9.660	3-5/8	B ₆	5-5/32	4-7/8	1-1/2	2	5-3/8	35.30
13	200S13	S2	11.640	10.447	4-3/16	B ₆	7-1/8	6-3/4	2-1/2	2-7/8	6-3/8	52.20
14	200S14	S2	12.460	11.235	4-3/16	B ₆	7-1/8	6-3/4	2-1/2	2-7/8	6-3/8	57.50
15	200S15	S2	13.260	12.025	4-3/16	B ₆	7-1/8	6-3/4	2-1/2	2-7/8	6-3/8	61.00
16	200S16	S2	14.070	12.815	4-3/16	B ₆	7-1/8	6-3/4	2-1/2	2-7/8	6-3/8	71.00
17	200S17	S2	14.870	13.605	4-3/16	B ₆	7-1/8	6-3/4	2-1/2	2-7/8	6-3/8	79.00
18	200U18	U0	15.680	14.397	5-1/2	B ₆	5-23/32	5-1/4	2-17/32	1-5/8	8-3/8	76.50
19	200U19	U0	16.480	15.190	5-1/2	B ₆	5-23/32	5-1/4	2-17/32	1-5/8	8-3/8	83.70
20	200U20	U0	17.290	15.982	5-1/2	B ₆	5-23/32	5-1/4	2-17/32	1-5/8	8-3/8	91.30
21	200U21	U0	18.090	16.775	5-1/2	B ₆	5-23/32	5-1/4	2-17/32	1-5/8	8-3/8	99.40
22	200U22	U0	18.890	17.567	5-1/2	B ₆	5-23/32	5-1/4	2-17/32	1-5/8	8-3/8	110.00
23	200U23	U0	19.690	18.360	5-1/2	B ₆	5-23/32	5-1/4	2-17/32	1-5/8	8-3/8	117.00
24	200U24	U0	20.490	19.152	5-1/2	B ₆	5-23/32	5-1/4	2-17/32	1-5/8	8-3/8	126.00
25	200U25	U0	21.290	19.947	5-1/2	B ₆	5-23/32	5-1/4	2-17/32	1-5/8	8-3/8	140.00
26	200U26	U0	22.090	20.740	5-1/2	B ₆	5-23/32	5-1/4	2-17/32	1-5/8	8-3/8	150.00
28	200U28	U0	23.690	22.330	5-1/2	B ₆	5-23/32	5-1/4	2-17/32	1-5/8	8-3/8	169.00
30	200U30	U0	25.290	23.917	5-1/2	B ₆	5-23/32	5-1/4	2-17/32	1-5/8	8-3/8	188.00
32	200U32	U0	26.880	25.505	5-1/2	B ₆	5-23/32	5-1/4	2-17/32	1-5/8	8-3/8	212.00
35	200U35	U1	29.280	27.890	5-1/2	B ₆	7-19/32	7-1/8	2-7/8	2-7/8	8-3/8	252.00
40	200U40	U1	33.270	31.865	5-1/2	B ₆	7-19/32	7-1/8	2-7/8	2-7/8	8-3/8	306.00
45	200U45	U1	37.250	35.840	5-1/2	B ₆	7-19/32	7-1/8	2-7/8	2-7/8	8-3/8	290.00
54	200U54	U2	44.420	42.995	5	B ₆	10-19/32	10-1/8	3-29/32	4-1/4	8-3/8	385.00
60	200U60	U2	49.200	47.767	5	B ₆	10-19/32	10-1/8	3-29/32	4-1/4	8-3/8	445.00



Type B₆