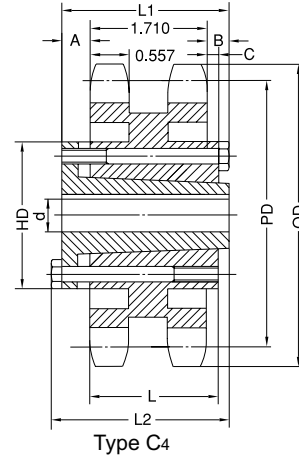
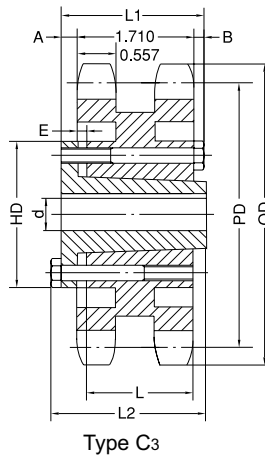
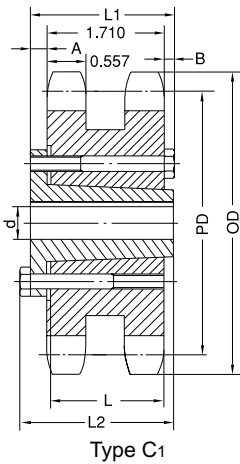


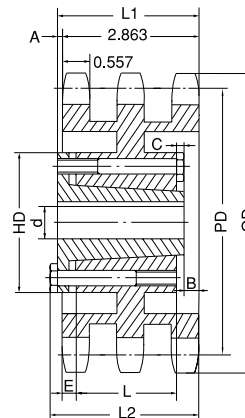
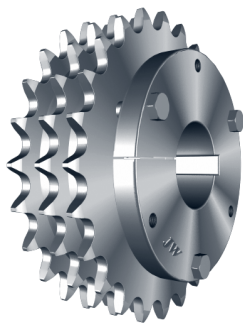
No. 80 Q-BUSHED SPROCKETS

1" Pitch



Double Q-Bushed

No. of Teeth	Part No.	Type	Bushing	OD	PD	Max. Bore d	L1	L2	HD	A	B	C	E	L	App. Wt. (Lbs.)	
															With Hub	Sprocket
36	D80E36	C ₁	E	12.030	11.474	3-1/2	2-5/8	2-15/16	6	51/64	1/8			1-5/8	48.3	38.2
42	D80E42	C ₁	E	13.940	13.382	3-1/2	2-5/8	2-15/16	6	51/64	1/8			1-5/8	65.3	55.3
45	D80E45	C ₁	E	14.900	14.336	3-1/2	2-5/8	2-15/16	6	51/64	1/8			1-5/8	74.6	64.6
52	D80E52	C ₃	E	17.130	16.562	3-1/2	2-5/8	2-15/16	6	51/64	1/8		3/32	1-5/8	68.2	58.2
60	D80E60	C ₃	E	19.680	19.107	3-1/2	2-5/8	2-15/16	6	51/64	1/8		3/32	1-5/8	78.2	68.2
68	D80E68	C ₃	E	22.230	21.653	3-1/2	2-5/8	2-15/16	6	51/64	1/8		3/32	1-5/8	84.2	74.2
76	D80E76	C ₃	E	24.780	24.198	3-1/2	2-5/8	2-15/16	6	51/64	1/8		3/32	1-5/8	100.0	90.1
95	D80F95	C ₄	F	30.830	30.245	3-15/16	3-5/8	4	6-5/8	1	59/64	51/64		2-1/2	152.0	140.0

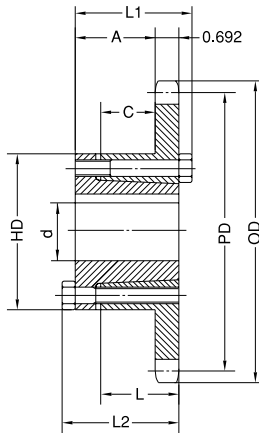


Triple Q-Bushed

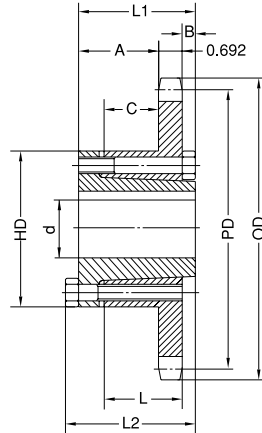
No. of Teeth	Part No.	Type	Bushing	OD	PD	Max. Bore d	L1	L2	HD	A	B	C	E	L	App. Wt. (Lbs.)	
															With Hub	Sprocket
36	T80E36	B ₂	E	12.030	11.474	3-1/2	3-7/64	3-27/64	6	1/4	31/64	1/8	5/8	1-5/8	65.1	55.1
42	T80E42	B ₂	E	13.940	13.382	3-1/2	3-7/64	3-27/64	6	1/4	31/64	1/8	5/8	1-5/8	81.9	71.9
45	T80E45	B ₂	E	14.900	14.336	3-1/2	3-7/64	3-27/64	6	1/4	31/64	1/8	5/8	1-5/8	75.3	65.3
52	T80E52	B ₂	E	17.130	16.562	3-1/2	3-7/64	3-27/64	6	1/4	31/64	1/8	5/8	1-5/8	90.0	80.0
60	T80F60	B ₂	F	19.680	19.107	3-15/16	3-43/64	4-3/64	6-5/8	13/16	3/64	1/8	3/16	2-1/2	112.0	100.0
68	T80F68	B ₂	F	22.230	21.653	3-15/16	3-43/64	4-3/64	6-5/8	13/16	3/64	1/8	3/16	2-1/2	132.0	120.0
76	T80F76	B ₂	F	24.780	24.198	3-15/16	3-43/64	4-3/64	6-5/8	13/16	3/64	1/8	3/16	2-1/2	150.0	138.0
95	T80F95	B ₂	F	30.830	30.245	3-15/16	3-43/64	4-3/64	6-5/8	13/16	3/64	1/8	3/16	2-1/2	208.0	196.0

Q-BUSHED SPROCKETS No. 100

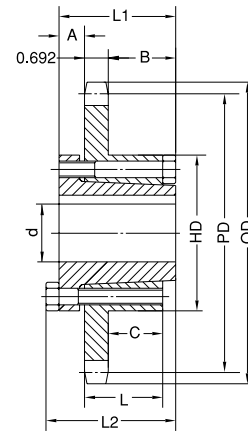
1-1/4" Pitch



Type B



Type B1



Type C

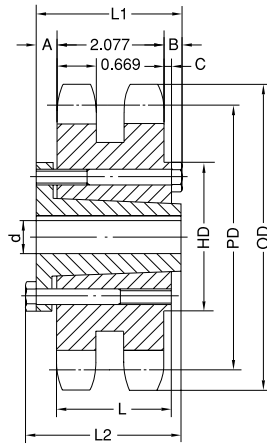
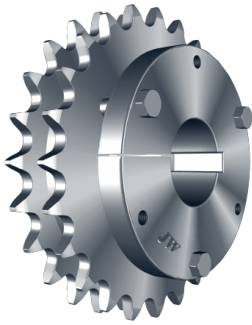
Single Q-Bushed

No. of Teeth	Part No.	Type	Bushing	OD	PD	Max. Bore d	L1	L2	HD	A	B	C	L	App. Wt. (Lbs.)	
														With Hub	Sprocket
11	100SDS11H	B	SDS	5.010	4.437	2	1-1/2	1-1/2	3-3/16	5/8		1/16	3/4	3.0	2.0
12	100SDS12H	B	SDS	5.420	4.830	2	1-1/2	1-1/2	3-3/16	5/8		1/16	3/4	3.6	2.6
13	100SK13H	B	SK	5.820	5.223	2-5/8	2-1/8	2-1/8	3-7/8	1-13/64		9/16	1-1/4	5.3	3.3
14	100SK14H	B	SK	6.230	5.617	2-5/8	2-1/8	2-1/8	3-7/8	1-13/64		9/16	1-1/4	6.1	4.1
15	100SF15H	B	SF	6.630	6.012	2-15/16	2-1/4	2-1/4	4-5/8	1-19/64		9/16	1-1/4	7.8	4.8
16	100SF16H	B	SF	7.030	6.407	2-15/16	2-1/4	2-1/4	4-5/8	1-19/64		9/16	1-1/4	8.6	5.6
17	100SF17H	B	SF	7.440	6.803	2-15/16	2-1/4	2-1/4	4-5/8	1-19/64		9/16	1-1/4	9.5	6.5
18	100E18H	B ₁	E	7.840	7.198	3-1/2	2-5/8	2-15/16	6	1-13/16	1/8	15/16	1-5/8	19.0	9.0
19	100E19H	B ₁	E	8.240	7.595	3-1/2	2-5/8	2-15/16	6	1-13/16	1/8	15/16	1-5/8	20.2	10.2
20	100E20H	B ₁	E	8.640	7.991	3-1/2	2-5/8	2-15/16	6	1-13/16	1/8	15/16	1-5/8	21.6	11.6
21	100E21H	B ₁	E	9.040	8.387	3-1/2	2-5/8	2-15/16	6	1-13/16	1/8	15/16	1-5/8	22.5	12.5
22	100E22H	B ₁	E	9.440	8.783	3-1/2	2-5/8	2-15/16	6	1-13/16	1/8	15/16	1-5/8	23.5	13.5
23	100E23H	B ₁	E	9.840	9.180	3-1/2	2-5/8	2-15/16	6	1-13/16	1/8	15/16	1-5/8	24.6	14.6
24	100E24H	B ₁	E	10.250	9.577	3-1/2	2-5/8	2-15/16	6	1-13/16	1/8	15/16	1-5/8	25.7	15.7
25	100E25H	B ₁	E	10.650	9.973	3-1/2	2-5/8	2-15/16	6	1-13/16	1/8	15/16	1-5/8	26.8	16.8
26	100E26H	B ₁	E	11.050	10.370	3-1/2	2-5/8	2-15/16	6	1-13/16	1/8	15/16	1-5/8	28.1	18.1
27	100E27H	B ₁	E	11.440	10.767	3-1/2	2-5/8	2-15/16	6	1-13/16	1/8	15/16	1-5/8	29.2	19.2
28	100E28H	B ₁	E	11.840	11.164	3-1/2	2-5/8	2-15/16	6	1-13/16	1/8	15/16	1-5/8	30.7	20.7
30	100E30H	B ₁	E	12.640	11.958	3-1/2	2-5/8	2-15/16	6	1-13/16	1/8	15/16	1-5/8	33.2	23.2
32	100E32H	B ₁	E	13.440	12.753	3-1/2	2-5/8	2-15/16	6	1-13/16	1/8	15/16	1-5/8	35.4	25.4
35	100E35	B ₁	E	14.640	13.945	3-1/2	2-5/8	2-15/16	6	1-13/16	1/8	15/16	1-5/8	40.5	30.5
36	100E36	B ₁	E	15.040	14.342	3-1/2	2-5/8	2-15/16	6	1-13/16	1/8	15/16	1-5/8	42.5	32.3
40	100E40	B ₁	E	16.630	15.932	3-1/2	2-5/8	2-15/16	6	1-13/16	1/8	15/16	1-5/8	49.1	39.1
42	100E42	B ₁	E	17.430	16.727	3-1/2	2-5/8	2-15/16	6	1-13/16	1/8	15/16	1-5/8	53.4	43.4
45	100E45	B ₁	E	18.630	17.920	3-1/2	2-5/8	2-15/16	6	1-13/16	1/8	15/16	1-5/8	58.9	48.9
48	100E48	B ₁	E	19.820	19.112	3-1/2	2-5/8	2-15/16	6	1-13/16	1/8	15/16	1-5/8	64.0	54.0
54	100E54	C	E	22.210	21.498	3-1/2	2-5/8	2-15/16	6	7/8	1-1/16	15/16	1-5/8	72.0	62.0
60	100E60	C	E	24.600	23.884	3-1/2	2-5/8	2-15/16	6	7/8	1-1/16	15/16	1-5/8	84.0	74.0
70	100F70	C	F	28.580	27.862	3-15/16	3-5/8	4	6-5/8	1	1-15/16	1-13/16	2-1/2	110.5	99.0
72	100F72	C	F	29.380	28.657	3-15/16	3-5/8	4	6-5/8	1	1-15/16	1-13/16	2-1/2	117.5	106.0
80	100F80	C	F	32.570	31.839	3-15/16	3-5/8	4	6-5/8	1	1-15/16	1-13/16	2-1/2	134.5	123.0
84	100F84	C	F	34.160	33.430	3-15/16	3-5/8	4	6-5/8	1	1-15/16	1-13/16	2-1/2	151.5	140.0

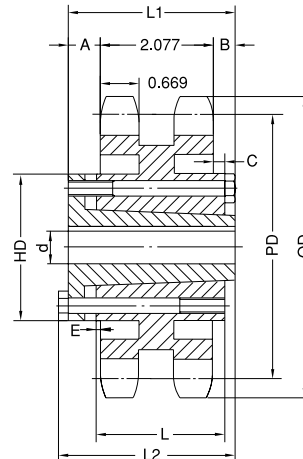
H - Denotes hardened teeth.

No. 100 Q-BUSHED SPROCKETS

1-1/4" Pitch



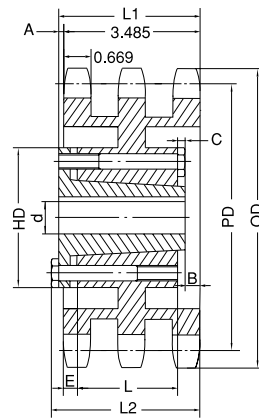
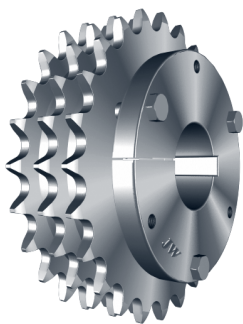
Type C2



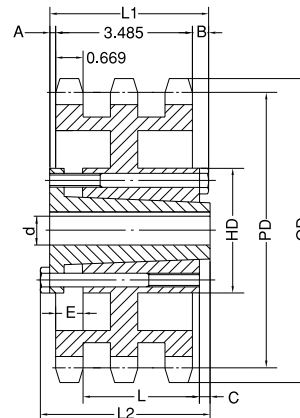
Type C6

Double Q-Bushed

No. of Teeth	Part No.	Type	Bushing	OD	PD	Max. Bore d	L1	L2	HD	A	B	C	E	L	App. Wt. (Lbs.)	
															With Hub	Sprocket
35	D100F35	C2	F	14.640	13.945	3-15/16	3-5/8	4	6-5/8	1	35/64	27/64		2-1/2	84.5	73.0
45	D100F45	C2	F	18.630	17.920	3-15/16	3-5/8	4	6-5/8	1	35/64	27/64		2-1/2	92.5	81.0
60	D100J60	C6	J	24.600	23.884	4-7/16	4-1/2	5	7-1/4	1-7/32	1-13/64	1-3/32	1/32	3-3/16	152.0	133.0
70	D100J70	C6	J	28.580	27.862	4-7/16	4-1/2	5	7-1/4	1-7/32	1-13/64	1-3/32	1/32	3-3/16	180.0	161.0
80	D100J80	C6	J	32.570	31.839	4-7/16	4-1/2	5	7-1/4	1-7/32	1-13/64	1-3/32	1/32	3-3/16	215.0	196.0



Type B2



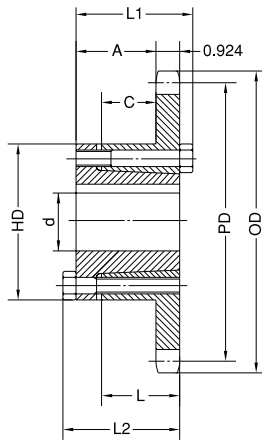
Type C3

Triple Q-Bushed

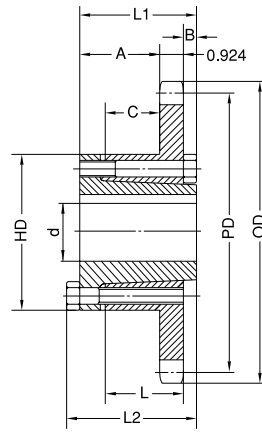
No. of Teeth	Part No.	Type	Bushing	OD	PD	Max. Bore d	L1	L2	HD	A	B	C	E	L	App. Wt. (Lbs.)	
															With Hub	Sprocket
35	T100F35	B2	F	14.640	13.945	3-15/16	3-63/64	4-23/64	6-5/8	1/2	23/64	1/8	1/2	2-1/2	112.0	100.0
45	T100F45	B2	F	18.630	17.920	3-15/16	3-63/64	4-23/64	6-5/8	1/2	23/64	1/8	1/2	2-1/2	139.0	120.0
60	T100J60	C3	J	24.600	23.884	4-7/16	4-1/2	5	7-1/4	1/2	33/64	3/8	11/16	3-3/16	197.0	178.0
70	T100J70	C3	J	28.580	27.862	4-7/16	4-1/2	5	7-1/4	1/2	33/64	3/8	11/16	3-3/16	247.0	228.0
80	T100J80	C3	J	32.570	31.839	4-7/16	4-1/2	5	7-1/4	1/2	33/64	3/8	11/16	3-3/16	287.0	268.0

Q-BUSHED SPROCKETS No. 120

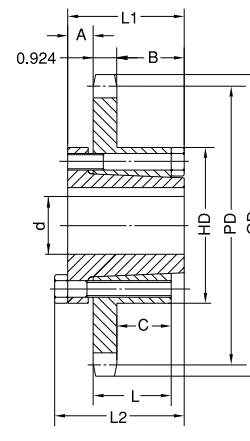
1-1/2" Pitch



Type B



Type B1



Type C

Single Q-Bushed

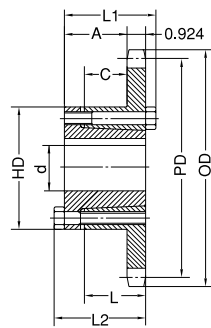
No. of Teeth	Part No.	Type	Bushing	OD	PD	Max. Bore d	L1	L2	HD	A	B	C	L	App. Wt. (Lbs.)	
														With Hub	Sprocket
12	120SF12H	B	SF	6.500	5.796	2-15/16	2-1/4	2-1/4	4-5/8	1-5/64		21/64	1-1/4	7.7	4.7
13	120SF13H	B	SF	6.990	6.268	2-15/16	2-1/4	2-1/4	4-5/8	1-5/64		21/64	1-1/4	9.1	6.1
14	120SF14H	B	SF	7.470	6.741	2-15/16	2-1/4	2-1/4	4-5/8	1-5/64		21/64	1-1/4	10.4	7.4
15	120SF15H	B	SF	7.960	7.215	2-15/16	2-1/4	2-1/4	4-5/8	1-5/64		21/64	1-1/4	11.8	8.0
16	120E16H	B ₁	E	8.440	7.689	3-1/2	2-5/8	2-15/16	6	1-9/16	1/8	45/64	1-5/8	21.2	11.2
17	120E17H	B ₁	E	8.920	8.163	3-1/2	2-5/8	2-15/16	6	1-9/16	1/8	45/64	1-5/8	23.4	13.4
18	120E18H	B ₁	E	9.410	8.638	3-1/2	2-5/8	2-15/16	6	1-9/16	1/8	45/64	1-5/8	24.8	14.8
19	120E19H	B ₁	E	9.890	9.113	3-1/2	2-5/8	2-15/16	6	1-9/16	1/8	45/64	1-5/8	26.5	16.5
20	120E20H	B ₁	E	10.370	9.589	3-1/2	2-5/8	2-15/16	6	1-9/16	1/8	45/64	1-5/8	29.2	19.2
21	120E21H	B ₁	E	10.850	10.064	3-1/2	2-5/8	2-15/16	6	1-9/16	1/8	45/64	1-5/8	29.9	19.9
22	120E22H	B ₁	E	11.330	10.540	3-1/2	2-5/8	2-15/16	6	1-9/16	1/8	45/64	1-5/8	31.6	21.6
23	120E23H	B ₁	E	11.810	11.016	3-1/2	2-5/8	2-15/16	6	1-9/16	1/8	45/64	1-5/8	33.8	23.8
24	120E24H	B ₁	E	12.290	11.492	3-1/2	2-5/8	2-15/16	6	1-9/16	1/8	45/64	1-5/8	35.8	25.8
25	120E25H	B ₁	E	12.770	11.968	3-1/2	2-5/8	2-15/16	6	1-9/16	1/8	45/64	1-5/8	38.1	28.1
26	120E26H	B ₁	E	13.250	12.444	3-1/2	2-5/8	2-15/16	6	1-9/16	1/8	45/64	1-5/8	39.9	29.9
28	120E28	B ₁	E	14.210	13.397	3-1/2	2-5/8	2-15/16	6	1-9/16	1/8	45/64	1-5/8	49.7	34.7
30	120E30	B ₁	E	15.170	14.350	3-1/2	2-5/8	2-15/16	6	1-9/16	1/8	45/64	1-5/8	54.4	39.4
32	120F32	C	F	16.130	15.303	3-15/16	3-5/8	4	6-5/8	1	1-11/16	1-37/64	2-1/2	62.0	50.5
35	120F35	C	F	17.570	16.734	3-15/16	3-5/8	4	6-5/8	1	1-11/16	1-37/64	2-1/2	71.0	59.5
36	120F36	C	F	18.050	17.211	3-15/16	3-5/8	4	6-5/8	1	1-11/16	1-37/64	2-1/2	74.9	63.4
40	120F40	C	F	19.960	19.118	3-15/16	3-5/8	4	6-5/8	1	1-11/16	1-37/64	2-1/2	88.5	77.0
42	120F42	C	F	20.920	20.072	3-15/16	3-5/8	4	6-5/8	1	1-11/16	1-37/64	2-1/2	94.5	83.0
45	120F45	C	F	22.350	21.503	3-15/16	3-5/8	4	6-5/8	1	1-11/16	1-37/64	2-1/2	95.5	84.0
48	120F48	C	F	23.790	22.935	3-15/16	3-5/8	4	6-5/8	1	1-11/16	1-37/64	2-1/2	103.5	92.0
54	120F54	C	F	26.650	25.798	3-15/16	3-5/8	4	6-5/8	1	1-11/16	1-37/64	2-1/2	125.0	114.0
60	120J60	C	J	29.520	28.661	4-7/16	4-1/2	5	7-1/4	1-3/16	2-5/16	2-17/64	3-3/16	159.0	140.0
70	120J70	C	J	34.300	33.434	4-7/16	4-1/2	5	7-1/4	1-3/16	2-5/16	2-17/64	3-3/16	196.0	177.0
80	120J80	C	J	39.080	38.207	4-7/16	4-1/2	5	7-1/4	1-3/16	2-5/16	2-17/64	3-3/16	241.0	222.0

H - Denotes hardened teeth.

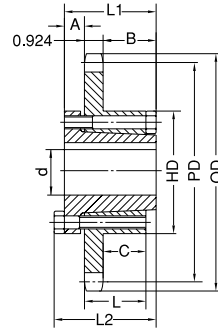
For 120 Double, please refer to page 89.

No. 140 Q-BUSHED SPROCKETS

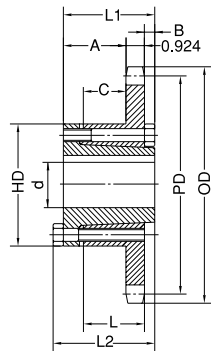
1-3/4" Pitch



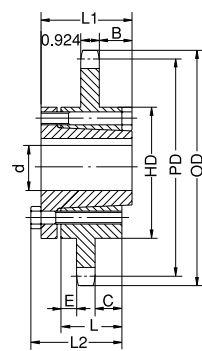
Type B



Type C



Type B1



Type C1

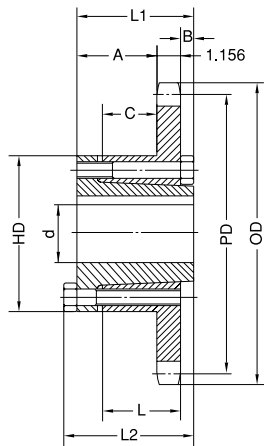
Single Q-Bushed

No. of Teeth	Part No.	Type	Bushing	OD	PD	Max. Bore d	L1	L2	HD	A	B	C	E	L	App. Wt. (Lbs.)	
															With Hub	Sprocket
11	140SF11H	B	SF	7.010	6.212	2-15/16	2-1/4	2-1/4	4-5/8	1-5/64		21/64		1-1/4	8.6	5.6
12	140SF12H	B	SF	7.580	6.762	2-15/16	2-1/4	2-1/4	4-5/8	1-5/64		21/64		1-1/4	10.4	7.4
13	140SF13H	B	SF	8.150	7.313	2-15/16	2-1/4	2-1/4	4-5/8	1-5/64		21/64		1-1/4	11.9	8.9
14	140E14H	B ₁	E	8.720	7.864	3-1/2	2-5/8	2-15/16	6	1-9/16	1/8	45/64		1-5/8	21.6	11.6
15	140E15H	B ₁	E	9.280	8.417	3-1/2	2-5/8	2-15/16	6	1-9/16	1/8	45/64		1-5/8	24.2	14.2
16	140E16H	B ₁	E	9.850	8.970	3-1/2	2-5/8	2-15/16	6	1-9/16	1/8	45/64		1-5/8	25.9	15.9
17	140E17H	B ₁	E	10.410	9.524	3-1/2	2-5/8	2-15/16	6	1-9/16	1/8	45/64		1-5/8	28.0	18.0
18	140E18H	B ₁	E	10.980	10.078	3-1/2	2-5/8	2-15/16	6	1-9/16	1/8	45/64		1-5/8	29.6	19.6
19	140E19H	B ₁	E	11.540	10.632	3-1/2	2-5/8	2-15/16	6	1-9/16	1/8	45/64		1-5/8	32.0	22.0
20	140E20H	B ₁	E	12.100	11.187	3-1/2	2-5/8	2-15/16	6	1-9/16	1/8	45/64		1-5/8	34.6	24.6
21	140E21H	B ₁	E	12.660	11.742	3-1/2	2-5/8	2-15/16	6	1-9/16	1/8	45/64		1-5/8	37.6	27.6
22	140E22	B ₁	E	13.220	12.297	3-1/2	2-5/8	2-15/16	6	1-9/16	1/8	45/64		1-5/8	39.5	29.5
23	140F23	B ₁	F	13.780	12.852	3-15/16	3-5/8	4	6-5/8	2-9/16	1/8	1-37/64		2-1/2	48.0	36.4
24	140F24	B ₁	F	14.340	13.407	3-15/16	3-5/8	4	6-5/8	2-9/16	1/8	1-37/64		2-1/2	51.6	40.1
25	140F25	B ₁	F	14.900	13.963	3-15/16	3-5/8	4	6-5/8	2-9/16	1/8	1-37/64		2-1/2	53.8	42.3
26	140F26	B ₁	F	15.460	14.518	3-15/16	3-5/8	4	6-5/8	2-9/16	1/8	1-37/64		2-1/2	58.0	46.5
30	140F30	B ₁	F	17.700	16.742	3-15/16	3-5/8	4	6-5/8	2-9/16	1/8	1-37/64		2-1/2	72.0	60.4
35	140F35	C	F	20.490	19.523	3-15/16	3-5/8	4	6-5/8	1	1-11/16	1-37/64		2-1/2	89.5	78.0
36	140F36	C	F	21.050	20.079	3-15/16	3-5/8	4	6-5/8	1	1-11/16	1-37/64		2-1/2	95.5	84.0
40	140J40	C	J	23.290	22.305	4-7/16	4-1/2	5	7-1/4	1-3/16	2-3/8	2-17/64		3-3/16	117.0	98.0
45	140J45	C	J	26.080	25.087	4-7/16	4-1/2	5	7-1/4	1-3/16	2-3/8	2-17/64		3-3/16	139.0	120.0
48	140J48	C	J	27.750	26.757	4-7/16	4-1/2	5	7-1/4	1-3/16	2-3/8	2-17/64		3-3/16	148.0	129.0
54	140J54	C	J	31.100	30.097	4-7/16	4-1/2	5	7-1/4	1-3/16	2-3/8	2-17/64		3-3/16	168.0	149.0
60	140J60	C	J	34.440	33.438	4-7/16	4-1/2	5	7-1/4	1-3/16	2-3/8	2-17/64		3-3/16	205.0	186.0
70	140M70	C ₁	M	40.020	39.006	5-1/2	6-3/4	6-3/4	9		2-29/32	2-17/32	1-13/32	5-3/16	301.0	264.0
80	140M80	C ₁	M	45.590	44.575	5-1/2	6-3/4	6-3/4	9		2-29/32	2-17/32	1-13/32	5-3/16	385.0	348.0

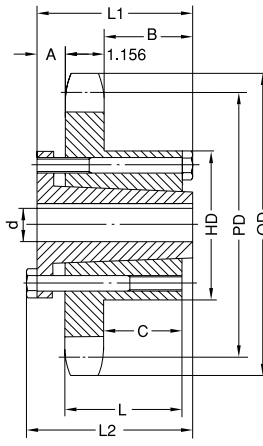
H - Denotes hardened teeth.
For 140 Double, please refer to page 89.

Q-BUSHED SPROCKETS No. 160

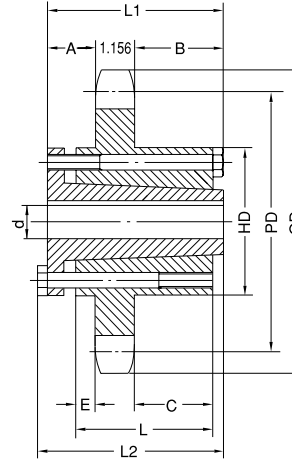
2" Pitch



Type B1



Type C



Type C1

Single Q-Bushed

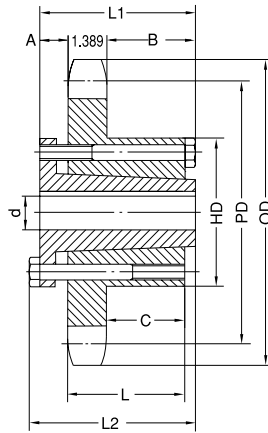
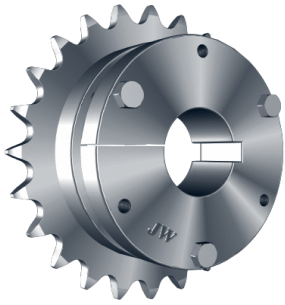
No. of Teeth	Part No.	Type	Bushing	OD	PD	Max. Bore d	L1	L2	HD	A	B	C	E	L	App. Wt. (Lbs.)	
															With Hub	Sprocket
12	160E12H	B1	E	8.660	7.727	3-1/2	2-5/8	2-15/16	6	1-5/16	1/8	15/32		1-5/8	21.0	11.0
13	160E13H	B1	E	9.310	8.357	3-1/2	2-5/8	2-15/16	6	1-5/16	1/8	15/32		1-5/8	24.0	14.0
14	160E14H	B1	E	9.960	8.988	3-1/2	2-5/8	2-15/16	6	1-5/16	1/8	15/32		1-5/8	26.0	16.0
15	160F15H	B1	F	10.610	9.620	3-15/16	3-5/8	4	6-5/8	2-5/16	1/8	1-11/32		2-1/2	35.5	24.0
16	160F16H	B1	F	11.260	10.252	3-15/16	3-5/8	4	6-5/8	2-5/16	1/8	1-11/32		2-1/2	38.5	27.0
17	160F17H	B1	F	11.900	10.885	3-15/16	3-5/8	4	6-5/8	2-5/16	1/8	1-11/32		2-1/2	42.5	31.0
18	160F18H	B1	F	12.540	11.518	3-15/16	3-5/8	4	6-5/8	2-5/16	1/8	1-11/32		2-1/2	46.5	35.0
19	160F19H	B1	F	13.190	12.151	3-15/16	3-5/8	4	6-5/8	2-5/16	1/8	1-11/32		2-1/2	49.5	38.0
20	160F20H	B1	F	13.830	12.785	3-15/16	3-5/8	4	6-5/8	2-5/16	1/8	1-11/32		2-1/2	53.5	42.0
21	160F21	B1	F	14.740	13.419	3-15/16	3-5/8	4	6-5/8	2-5/16	1/8	1-11/32		2-1/2	56.5	45.0
22	160F22	B1	F	15.110	14.053	3-15/16	3-5/8	4	6-5/8	2-5/16	1/8	1-11/32		2-1/2	62.5	51.0
23	160F23	B1	F	15.750	14.688	3-15/16	3-5/8	4	6-5/8	2-5/16	1/8	1-11/32		2-1/2	66.5	55.0
24	160F24	B1	F	16.390	15.323	3-15/16	3-5/8	4	6-5/8	2-5/16	1/8	1-11/32		2-1/2	70.5	59.0
25	160F25	B1	F	17.030	15.958	3-15/16	3-5/8	4	6-5/8	2-5/16	1/8	1-11/32		2-1/2	75.5	64.0
26	160J26	C	J	17.670	16.593	4-7/16	4-1/2	5	7-1/4	1-3/16	2-1/8	2-1/32		3-3/16	92.5	74.0
28	160J28	C	J	18.950	17.863	4-7/16	4-1/2	5	7-1/4	1-3/16	2-1/8	2-1/32		3-3/16	103.0	84.0
30	160J30	C	J	20.230	19.134	4-7/16	4-1/2	5	7-1/4	1-3/16	2-1/8	2-1/32		3-3/16	115.0	96.0
35	160J35	C	J	23.420	22.312	4-7/16	4-1/2	5	7-1/4	1-3/16	2-1/8	2-1/32		3-3/16	135.0	116.0
40	160M40	C1	M	26.610	25.491	5-1/2	6-3/4	7-1/4	9	2-11/16	2-11/16	2-13/32	1-19/32	5-3/16	211.0	174.0
45	160M45	C1	M	29.800	28.671	5-1/2	6-3/4	7-1/4	9	2-11/16	2-11/16	2-13/32	1-19/32	5-3/16	245.0	208.0
54	160M54	C1	M	35.540	34.397	5-1/2	6-3/4	7-1/4	9	2-11/16	2-11/16	2-13/32	1-19/32	5-3/16	299.0	262.0
60	160M60	C1	M	39.360	38.215	5-1/2	6-3/4	7-1/4	9	2-11/16	2-11/16	2-13/32	1-19/32	5-3/16	347.0	310.0
70	160M70	C1	M	45.730	44.578	5-1/2	6-3/4	7-1/4	9	2-11/16	2-11/16	2-13/32	1-19/32	5-3/16	468.0	431.0
80	160M80	C1	M	52.100	50.943	5-1/2	6-3/4	7-1/4	9	2-11/16	2-11/16	2-13/32	1-19/32	5-3/16	567.0	530.0

H - Denotes hardened teeth.

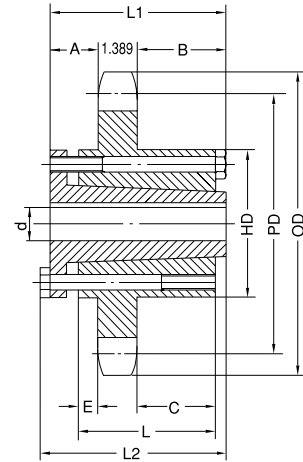
For 160 Double, please refer to page 89.

No. 200 Q-BUSHED SPROCKETS

2-1/2" Pitch



Type C

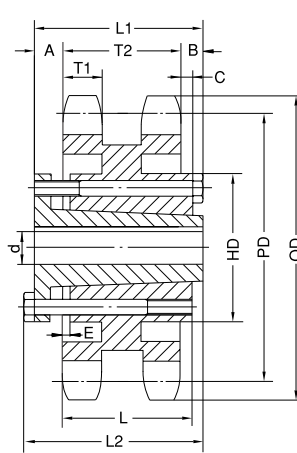
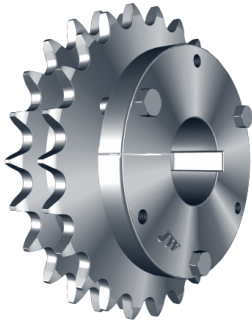


Type C1

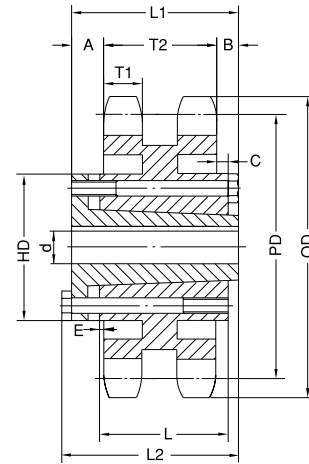
Single Q-Bushed

No. of Teeth	Part No.	Type	Bushing	OD	PD	Max. Bore d	L1	L2	HD	A	B	C	E	L	App. Wt. (Lbs.)	
															With Hub	Sprocket
12	200F12	C	F	10.830	9.660	3-15/16	3-5/8	4	6-5/8	1	1-5/16	1-1/8		2-1/2	25.5	24.0
13	200J13	C	J	11.640	10.447	4-7/16	4-1/2	5	7-1/4	1-3/16	2	1-13/16		3-3/16	50.5	32.0
14	200J14	C	J	12.460	11.235	4-7/16	4-1/2	5	7-1/4	1-3/16	2	1-13/16		3-3/16	57.5	39.0
15	200J15	C	J	13.260	12.025	4-7/16	4-1/2	5	7-1/4	1-3/16	2	1-13/16		3-3/16	62.5	44.0
16	200J16	C	J	14.070	12.815	4-7/16	4-1/2	5	7-1/4	1-3/16	2	1-13/16		3-3/16	68.5	50.0
17	200M17	C1	M	14.870	13.605	5-1/2	6-3/4	7-1/4	9	2-23/32	2-23/32	2-5/16	1-1/2	5-3/16	113.0	76.0
18	200M18	C1	M	15.680	14.397	5-1/2	6-3/4	7-1/4	9	2-23/32	2-23/32	2-5/16	1-1/2	5-3/16	119.0	82.0
19	200M19	C1	M	16.480	15.910	5-1/2	6-3/4	7-1/4	9	2-23/32	2-23/32	2-5/16	1-1/2	5-3/16	125.0	88.0
20	200M20	C1	M	17.290	15.982	5-1/2	6-3/4	7-1/4	9	2-23/32	2-23/32	2-5/16	1-1/2	5-3/16	134.0	97.0
21	200M21	C1	M	18.090	16.775	5-1/2	6-3/4	7-1/4	9	2-23/32	2-23/32	2-5/16	1-1/2	5-3/16	140.0	103.0
22	200M22	C1	M	18.890	17.567	5-1/2	6-3/4	7-1/4	9	2-23/32	2-23/32	2-5/16	1-1/2	5-3/16	149.0	112.0
23	200M23	C1	M	19.690	18.360	5-1/2	6-3/4	7-1/4	9	2-23/32	2-23/32	2-5/16	1-1/2	5-3/16	157.0	120.0
24	200M24	C1	M	20.490	19.152	5-1/2	6-3/4	7-1/4	9	2-23/32	2-23/32	2-5/16	1-1/2	5-3/16	168.0	131.0
25	200M25	C1	M	21.290	19.947	5-1/2	6-3/4	7-1/4	9	2-23/32	2-23/32	2-5/16	1-1/2	5-3/16	175.0	138.0
26	200M26	C1	M	22.090	20.740	5-1/2	6-3/4	7-1/4	9	2-23/32	2-23/32	2-5/16	1-1/2	5-3/16	185.0	148.0
28	200M28	C1	M	23.690	22.330	5-1/2	6-3/4	7-1/4	9	2-23/32	2-23/32	2-5/16	1-1/2	5-3/16	205.0	168.0
30	200M30	C1	M	25.290	23.917	5-1/2	6-3/4	7-1/4	9	2-23/32	2-23/32	2-5/16	1-1/2	5-3/16	227.0	190.0
32	200M32	C1	M	26.880	25.505	5-1/2	6-3/4	7-1/4	9	2-23/32	2-23/32	2-5/16	1-1/2	5-3/16	251.0	214.0
35	200M35	C1	M	29.280	27.890	5-1/2	6-3/4	7-1/4	9	2-23/32	2-23/32	2-5/16	1-1/2	5-3/16	265.0	228.0
40	200M40	C1	M	33.270	31.865	5-1/2	6-3/4	7-1/4	9	2-23/32	2-23/32	2-5/16	1-1/2	5-3/16	315.0	278.0
45	200N45	C1	N	37.250	35.840	5-7/8	8-1/8	8-5/8	10	3-13/32	3-13/32	3-3/16	1-11/16	6-1/4	405.0	348.0
54	200N54	C1	N	44.420	42.995	5-7/8	8-1/8	8-5/8	10	3-13/32	3-13/32	3-3/16	1-11/16	6-1/4	535.0	478.0
60	200N60	C1	N	49.200	47.767	5-7/8	8-1/8	8-5/8	10	3-13/32	3-13/32	3-3/16	1-11/16	6-1/4	665.0	608.0

Q-BUSHED SPROCKETS



Type C5



Type C6

No.120 Double Q-Bushed

No. of Teeth	Part No.	Type	Bushing	OD	PD	Max. Bore d	L1	L2	HD	A	B	C	E	L	T1	T2	App. Wt. (Lbs.)	
																	With Hub	Sprocket
30	D120J30	C5	J	15.170	14.350	4-7/16	4-1/2	5	7-1/4	1-1/32	25/32	21/32	5/32	3-3/16	0.894	2.683	97.5	78.0
35	D120J35	C5	J	17.570	16.734	4-7/16	4-1/2	5	7-1/4	1-1/32	25/32	21/32	5/32	3-3/16	0.894	2.683	112.0	93.0
45	D120J45	C5	J	22.350	21.502	4-7/16	4-1/2	5	7-1/4	1-1/32	25/32	21/32	5/32	3-3/16	0.894	2.683	157.0	138.0
60	D120M60	C6	M	29.520	28.661	5-1/2	6-3/4	7-1/4	9	2-9/32	1-25/32	1-21/32	27/32	5-3/16	0.894	2.683	271.0	234.0

No.140 Double Q-Bushed

No. of Teeth	Part No.	Type	Bushing	OD	PD	Max. Bore d	L1	L2	HD	A	B	C	E	L	T1	T2	App. Wt. (Lbs.)	
																	With Hub	Sprocket
35	D140J35	C5	J	20.490	19.523	4-7/16	4-1/2	5	7-1/4	31/32	23/32	19/32	7/32	3-3/16	0.894	2.818	137.0	128.0
45	D140J45	C5	J	26.080	25.087	4-7/16	4-1/2	5	7-1/4	31/32	23/32	19/32	7/32	3-3/16	0.894	2.818	195.0	176.0
60	D140M60	C6	M	34.440	33.438	5-1/2	6-3/4	7-1/4	9	2-7/32	1-23/32	1-19/32	25/32	5-3/16	0.894	2.818	339.0	302.0

No.160 Double Q-Bushed

No. of Teeth	Part No.	Type	Bushing	OD	PD	Max. Bore d	L1	L2	HD	A	B	C	E	L	T1	T2	App. Wt. (Lbs.)	
																	With Hub	Sprocket
35	D160M35	C6	M	23.420	22.312	5-1/2	6-3/4	7-1/4	9	2-3/64	1-9/32	1-5/32	39/64	5-3/16	1.119	3.424	259.0	222.0
45	D160N45	C6	N	29.800	28.671	6	8-1/8	8-5/8	10	2-11/32	2-23/64	2-5/32	21/32	6-1/4	1.119	3.424	377.0	340.0
60	D160N60	C6	N	39.360	38.215	6	8-1/8	8-5/8	10	2-11/32	2-23/64	2-5/32	21/32	6-1/4	1.119	3.424	509.0	472.0