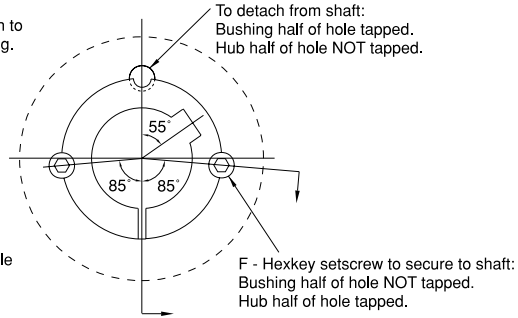
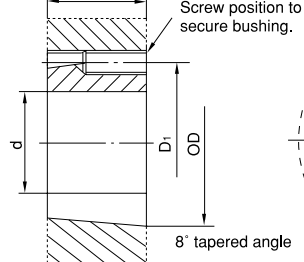
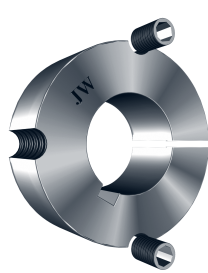


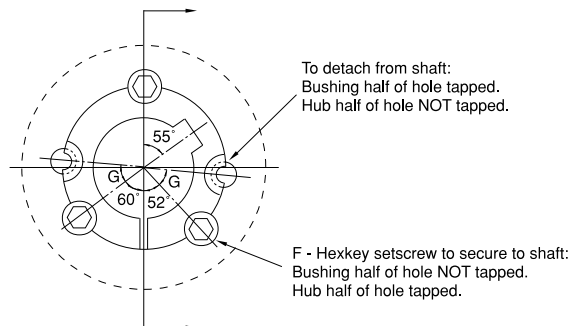
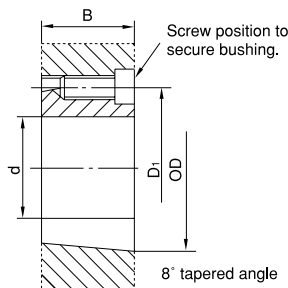
TAPER BUSHINGS



No.1008 to 3030

Part No.	OD	B	d		D ₁	F*	App. Wt. (Lbs.)
			Min.	Max.			
1008	1.386	0.875	0.500	1.000	1.328	1/4 x 1/2	0.20
1108	1.511	0.875	0.500	1.125	1.453	1/4 x 1/2	0.25
1210	1.875	1.000	0.500	1.250	1.750	3/8 x 5/8	0.55
1215	1.875	1.500	0.500	1.250	1.750	3/8 x 5/8	0.70
1310	2.000	1.000	0.500	1.375	1.875	3/8 x 5/8	0.65
1610	2.250	1.000	0.500	1.625	2.125	3/8 x 5/8	0.70
1615	2.250	1.500	0.500	1.625	2.125	3/8 x 5/8	1.00
2012	2.750	1.250	0.500	2.000	2.625	7/16 x 7/8	1.40
2517	3.375	1.750	0.500	2.500	3.250	1/2 x 1	3.20
2525	3.375	2.500	0.750	2.500	3.250	1/2 x 1	4.30
3020	4.250	2.000	0.938	3.000	4.000	5/8 x 1-1/4	5.80
3030	4.250	3.000	0.938	3.000	4.000	5/8 x 1-1/4	8.00

* Requires two screws.



No.3535 to 5050

Part No.	OD	B	d		D ₁	F*	G	App. Wt. (Lbs.)
			Min.	Max.				
3535	5.000	3.500	1.188	3.938	4.830	1/2 x 1-1/2	39°	11.00
4040	5.750	4.000	1.438	4.438	5.540	5/8 x 1-3/4	40°	17.00
4545	6.375	4.500	1.938	4.938	6.130	3/4 x 2	40°	24.00
5050	7.000	5.000	2.313	5.000	6.720	7/8 x 2-1/4	37°	32.00

* Requires three screws.