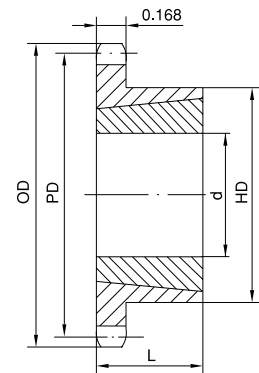


TAPER-BUSHED SPROCKETS **No. 35**

3/8" Pitch

Single Taper-Bushed

No. of Teeth	Type	Part No.	Bushing	OD	PD	Max. Bore d	HD	L	App. Wt. (Lbs.)	
									Sprocket	Bushing
18	B	35BTB18H	1008	2.352	2.159	1	1-7/8*	7/8	0.4	0.3
19	B	35BTB19H	1008	2.472	2.278	1	1-13/16	7/8	0.5	0.3
20	B	35BTB20H	1008	2.593	2.397	1	1-15/16	7/8	0.6	0.3
21	B	35BTB21H	1008	2.713	2.516	1	2-1/16	7/8	0.7	0.3
22	B	35BTB22H	1210	2.883	2.635	1-1/4	2-3/8*	1	0.8	0.6
23	B	35BTB23H	1210	2.954	2.754	1-1/4	2-7/16	1	0.9	0.6
24	B	35BTB24H	1210	3.074	2.873	1-1/4	2-7/16	1	0.9	0.6
25	B	35BTB25H	1210	3.194	2.992	1-1/4	2-7/16	1	1.2	0.6
26	B	35BTB26H	1610	3.314	3.111	1-5/8	2-7/8*	1	1.1	0.9
28	B	35BTB28H	1610	3.553	3.349	1-5/8	2-7/8	1	1.2	0.9
30	B	35BTB30H	1610	3.793	3.588	1-5/8	3-1/8	1	1.2	0.9
32	B	35BTB32H	1610	4.032	3.826	1-5/8	3-1/4	1	1.3	0.9
35	B	35BTB35H	1610	4.392	4.183	1-5/8	3-1/4	1	1.4	0.9
36	B	35BTB36H	1610	4.511	4.303	1-5/8	3-1/4	1	1.4	0.9
40	B	35BTB40	1610	4.990	4.786	1-5/8	3-1/4	1	1.9	0.9
42	B	35BTB42	1610	5.229	5.018	1-5/8	3-1/4	1	2.0	0.9
45	B	35BTB45	1610	5.588	5.376	1-5/8	3-1/4	1	2.1	0.9
48	B	35BTB48	1610	5.946	5.734	1-5/8	3-1/4	1	2.3	0.9
54	B	35BTB54	1610	6.663	6.449	1-5/8	3-1/4	1	2.6	0.9
60	B	35BTB60	1610	7.380	7.165	1-5/8	3-1/4	1	3.0	0.9
70	B	35BTB70	1610	8.575	8.358	1-5/8	3-1/4	1	3.7	0.9
72	B	35BTB72	1610	8.814	8.597	1-5/8	3-1/4	1	3.9	0.9
80	B	35BTB80	1610	9.770	9.552	1-5/8	3-1/4	1	4.5	0.9
84	B	35BTB84	1610	10.247	10.029	1-5/8	3-1/4	1	4.9	0.9
96	B	35BTB96	1610	11.680	11.461	1-5/8	3-1/4	1	6.0	0.9
112	B	35BTB112	1610	13.590	13.371	1-5/8	3-1/4	1	7.8	0.9



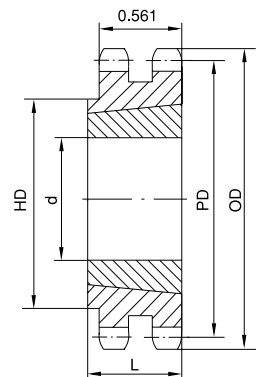
Type B

H - Denotes hardened teeth.

*Hub has recessed groove allowing for chain clearance.

Double Taper-Bushed

No. of Teeth	Type	Part No.	Bushing	OD	PD	Max. Bore d	HD	L	App. Wt. (Lbs.)	
									Sprocket	Bushing
19	B ₁	D35BTB19H	1008	2.472	2.278	1	1-53/64	7/8	0.6	0.3
20	B ₁	D35BTB20H	1008	2.593	2.397	1	1-15/16	7/8	0.8	0.3
21	B ₁	D35BTB21H	1008	2.713	2.516	1	2-1/16	7/8	1.4	0.3
22	B ₁	D35BTB22H	1008	2.833	2.635	1	2-3/16	7/8	1.7	0.3
24	B ₁	D35BTB24H	1210	3.074	2.873	1-1/4	2-7/16	1	1.8	0.6
26	B ₁	D35BTB26	1210	3.314	3.111	1-1/4	2-5/8	1	2.0	0.6
30	B ₁	D35BTB30	1610	3.793	3.588	1-5/8	3-1/8	1	1.8	0.9
32	B ₁	D35BTB32	1610	4.032	3.826	1-5/8	3-1/4	1	2.0	0.9
35	B ₁	D35BTB35	1610	4.392	4.183	1-5/8	3-1/4	1	2.3	0.9
40	B ₁	D35BTB40	1610	4.990	4.780	1-5/8	3-1/4	1	2.9	0.9
45	B ₁	D35BTB45	1610	5.588	5.376	1-5/8	3-1/4	1	3.2	0.9
48	B ₁	D35BTB48	1610	5.946	5.734	1-5/8	3-5/8	1	3.5	0.9
54	B ₁	D35BTB54	1610	6.663	6.449	1-5/8	3-5/8	1	3.9	0.9
60	B ₁	D35BTB60	1610	7.380	7.165	1-5/8	3-5/8	1	4.9	0.9
70	B ₁	D35BTB70	1610	8.575	8.358	1-5/8	3-5/8	1	6.3	0.9
80	B ₁	D35BTB80	1610	9.770	9.552	1-5/8	3-5/8	1	7.9	0.9
96	B ₁	D35BTB96	1610	11.680	11.461	1-5/8	3-5/8	1	9.9	0.9
112	B ₁	D35BTB112	1610	13.590	13.371	1-5/8	3-5/8	1	10.9	0.9

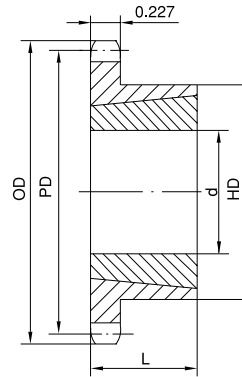
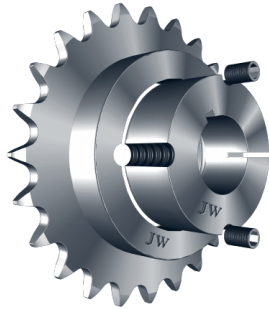


Type B₁

H - Denotes hardened teeth.

No. 41 TAPER-BUSHED SPROCKETS

1/2" Pitch



Type B

Single Taper-Bushed

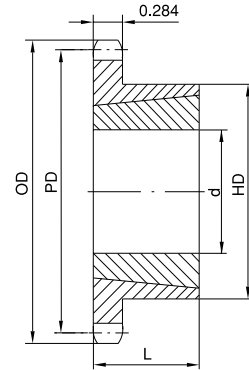
No. of Teeth	Part No.	Bushing	OD	PD	Max. Bore d	HD	L	App. Wt. (Lbs.)	
								Sprocket	Bushing
14	41BTB14H	1008	2.490	2.249	1	1-7/8*	7/8	0.4	0.3
15	41BTB15H	1008	2.650	2.405	1	1-7/8	7/8	0.5	0.3
16	41BTB16H	1008	2.810	2.503	1	2	7/8	0.6	0.3
17	41BTB17H	1210	2.980	2.721	1-1/4	2-3/8*	1	0.7	0.6
18	41BTB18H	1210	3.140	2.879	1-1/4	2-3/8	1	0.9	0.6
19	41BTB19H	1210	3.300	3.038	1-1/4	2-1/2	1	1.1	0.6
20	41BTB20H	1610	3.460	3.196	1-5/8	2-7/8*	1	1.1	0.9
21	41BTB21H	1610	3.620	3.355	1-5/8	3*	1	1.2	0.9
22	41BTB22H	1610	3.780	3.573	1-5/8	3	1	1.3	0.9
23	41BTB23H	1610	3.940	3.672	1-5/8	3	1	1.4	0.9
24	41BTB24H	1610	4.100	3.831	1-5/8	3-1/4	1	1.4	0.9
25	41BTB25H	1610	4.260	3.989	1-5/8	3-1/4	1	1.5	0.9
26	41BTB26H	1610	4.420	4.148	1-5/8	3-1/4	1	1.5	0.9
28	41BTB28H	1610	4.740	4.466	1-5/8	3-1/4	1	1.7	0.9
30	41BTB30H	1610	5.060	4.783	1-5/8	3-1/4	1	1.8	0.9
32	41BTB32H	1610	5.380	5.101	1-5/8	3-1/4	1	1.9	0.9
35	41BTB35H	1610	5.860	5.578	1-5/8	3-1/4	1	2.3	0.9
36	41BTB36H	1610	6.020	5.737	1-5/8	3-1/4	1	2.4	0.9
40	41BTB40	1610	6.650	6.373	1-5/8	3-1/4	1	2.7	0.9
45	41BTB45	1610	7.450	7.168	1-5/8	3-1/4	1	3.5	0.9
48	41BTB48	1610	7.930	7.645	1-5/8	3-1/4	1	4.1	0.9
54	41BTB54	1610	8.890	8.599	1-5/8	3-1/4	1	4.9	0.9
60	41BTB60	1610	9.840	9.554	1-5/8	3-1/4	1	5.7	0.9
70	41BTB70	1610	11.430	11.145	1-5/8	3-1/4	1	7.4	0.9
72	41BTB72	1610	11.750	11.463	1-5/8	3-1/4	1	8.2	0.9
80	41BTB80	1610	13.030	12.736	1-5/8	3-1/4	1	9.6	0.9
96	41BTB96	1610	15.570	15.281	1-5/8	3-1/4	1	13.1	0.9

H - Denotes hardened teeth.

*Hub has recessed groove allowing for chain clearance.

TAPER-BUSHED SPROCKETS **No. 40**

1/2" Pitch



Type B

Single Taper-Bushed

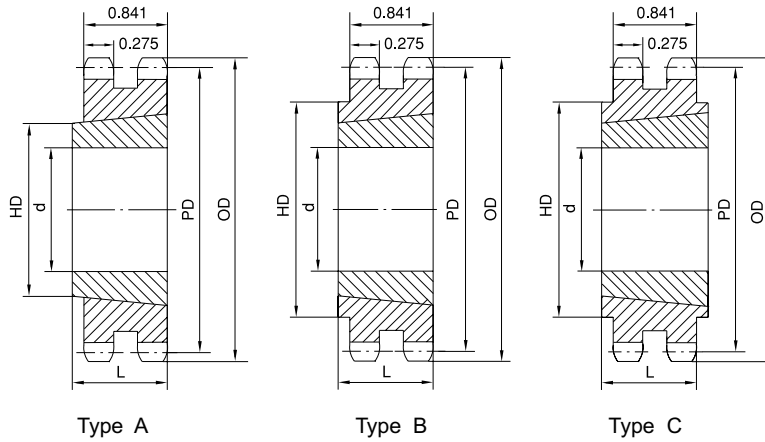
No. of Teeth	Part No.	Bushing	OD	PD	Max. Bore d	HD	L	App. Wt. (Lbs.)	
								Sprocket	Bushing
14	40BTB14H	1008	2.491	2.247	1	1-13/16*	7/8	0.3	0.3
15	40BTB15H	1008	2.652	2.405	1	1-13/16	7/8	0.4	0.3
16	40BTB16H	1008	2.814	2.563	1	1-15/16	7/8	0.5	0.3
17	40BTB17H	1210	2.975	2.721	1-1/4	2-3/8*	1	0.5	0.6
18	40BTB18H	1210	3.135	2.879	1-1/4	2-15/32*	1	0.6	0.6
19	40BTB19H	1210	3.296	3.038	1-1/4	2-15/32	1	0.7	0.6
20	40BTB20H	1610	3.457	3.196	1-5/8	2-25/32*	1	0.7	0.9
21	40BTB21H	1610	3.617	3.355	1-5/8	2-25/32	1	0.8	0.9
22	40BTB22H	1610	3.778	3.513	1-5/8	2-25/32	1	0.9	0.9
23	40BTB23H	1610	3.938	3.672	1-5/8	3	1	1.0	0.9
24	40BTB24H	1610	4.098	3.831	1-5/8	3-1/4	1	1.4	0.9
25	40BTB25H	1610	4.258	3.989	1-5/8	3-1/4	1	1.5	0.9
26	40BTB26H	1610	4.418	4.148	1-5/8	3-1/4	1	1.7	0.9
28	40BTB28H	1610	4.738	4.466	1-5/8	3	1	1.8	0.9
30	40BTB30H	1610	5.057	4.783	1-5/8	3	1	1.9	0.9
32	40BTB32H	1610	5.377	5.101	1-5/8	3	1	1.9	0.9
35	40BTB35H	1610	5.855	5.578	1-5/8	3	1	2.3	0.9
36	40BTB36H	1610	6.015	5.737	1-5/8	3	1	2.4	0.9
40	40BTB40	1610	6.653	6.373	1-5/8	3	1	2.8	0.9
42	40BTB42	1610	6.972	6.691	1-5/8	3	1	2.9	0.9
45	40BTB45	1610	7.451	7.168	1-5/8	3	1	3.5	0.9
48	40BTB48	1610	7.928	7.645	1-5/8	3	1	4.0	0.9
54	40BTB54	1610	8.885	8.599	1-5/8	3	1	4.9	0.9
60	40BTB60	1610	9.841	9.554	1-5/8	3	1	6.0	0.9
70	40BTB70	2012	11.434	11.145	2	3-9/16	1-1/4	8.2	1.7
72	40BTB72	2012	11.752	11.463	2	3-9/16	1-1/4	9.0	1.7
80	40BTB80	2012	13.026	12.736	2	3-9/16	1-1/4	10.8	1.7
84	40BTB84	2012	13.663	13.372	2	3-9/16	1-1/4	11.3	1.7
96	40BTB96	2012	15.573	15.282	2	3-9/16	1-1/4	14.6	1.7
112	40BTB112	2517	18.122	17.828	2-1/2	4-1/4	1-3/4	20.5	1.7

H - Denotes hardened teeth.

*Hub has recessed groove allowing for chain clearance.

No. 40 TAPER-BUSHED SPROCKETS

1/2" Pitch



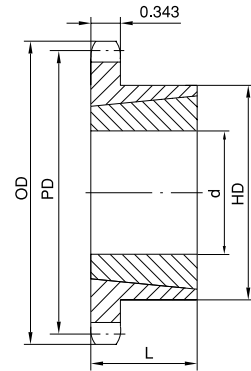
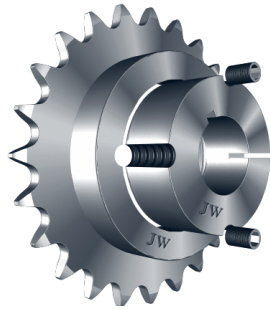
Double Taper-Bushed

No. of Teeth	Part No.	Type	Bushing	OD	PD	Max. Bore d	HD	L	App. Wt. (Lbs.)	
									Sprocket	Bushing
15	D40ATB15H	A	1008	2.652	2.405	1	1-17/64	7/8	0.5	0.3
16	D40ATB16H	A	1008	2.814	2.563	1	1-17/64	7/8	0.6	0.3
17	D40ATB17H	A	1008	2.975	2.721	1	1-17/64	7/8	0.7	0.3
18	D40BTB18H	B	1210	3.135	2.879	1-1/4	2-5/16	1	0.7	0.6
19	D40BTB19H	B	1210	3.296	3.038	1-1/4	2-1/2	1	0.9	0.6
20	D40BTB20H	B	1610	3.457	3.196	1-5/8	2-5/8	1	0.9	0.9
21	D40BTB21H	B	1610	3.617	3.355	1-5/8	2-3/4	1	1.0	0.9
23	D40BTB23H	B	1610	3.938	3.672	1-5/8	3	1	1.3	0.9
25	D40BTB25H	B	2012	4.258	3.989	2	3-13/32	1-1/4	1.6	1.7
30	D40BTB30	B	2012	5.057	4.783	2	4-15/64	1-1/4	3.4	1.7
36	D40BTB36	B	2012	6.015	5.737	2	5-5/32	1-1/4	5.9	1.7
42	D40CTB42	C	2517	6.972	6.691	2-1/2	4-1/4	1-3/4	7.0	3.5
48	D40CTB48	C	2517	7.928	7.645	2-1/2	4-1/4	1-3/4	9.6	3.5
52	D40CTB52	C	2517	8.566	8.281	2-1/2	4-1/4	1-3/4	11.4	3.5
60	D40CTB60	C	2517	9.841	9.554	2-1/2	4-1/4	1-3/4	15.4	3.5
68	D40CTB68	C	2517	11.115	10.826	2-1/2	4-1/4	1-3/4	20.5	3.5
76	D40CTB76	C	2517	12.389	12.099	2-1/2	4-1/4	1-3/4	25.7	3.5
84	D40CTB84	C	2517	13.663	13.372	2-1/2	4-1/4	1-3/4	31.6	3.5
95	D40CTB95	C	2517	15.414	15.122	2-1/2	4-1/4	1-3/4	34.1	3.5
102	D40CTB102	C	2517	16.529	16.236	2-1/2	4-1/4	1-3/4	36.8	3.5

H - Denotes hardened teeth.

TAPER-BUSHED SPROCKETS **No. 50**

5/8" Pitch



Type B

Single Taper-Bushed

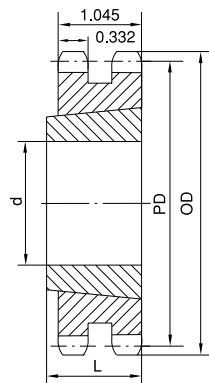
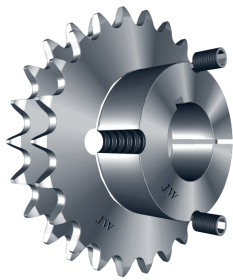
No. of Teeth	Part No.	Bushing	OD	PD	Max. Bore d	HD	L	App. Wt. (Lbs.)	
								Sprocket	Bushing
12	50BTB12H	1008	2.708	2.415	1	1-15/16*	7/8	0.5	0.3
13	50BTB13H	1008	2.911	2.612	1	1-13/16	7/8	0.5	0.3
14	50BTB14H	1008	3.113	2.809	1	1-15/16	7/8	0.6	0.3
15	50BTB15H	1210	3.315	3.006	1-1/4	2-15/32*	1	0.7	0.6
16	50BTB16H	1610	3.517	3.204	1-5/8	2-25/32*	1	0.7	0.9
17	50BTB17H	1610	3.719	3.401	1-5/8	2-25/32*	1	0.8	0.9
18	50BTB18H	1610	3.920	3.599	1-5/8	2-25/32	1	0.9	0.9
19	50BTB19H	1610	4.120	3.797	1-5/8	3	1	1.3	0.9
20	50BTB20H	1610	4.321	3.995	1-5/8	3-1/4	1	1.6	0.9
21	50BTB21H	1610	4.522	4.193	1-5/8	3	1	1.5	0.9
22	50BTB22H	1610	4.722	4.392	1-5/8	3	1	1.6	0.9
23	50BTB23H	2012	4.922	4.590	2	3-9/16	1-1/4	2.0	1.7
24	50BTB24H	2012	5.122	4.788	2	3-9/16	1-1/4	2.2	1.7
25	50BTB25H	2012	5.322	4.987	2	3-9/16	1-1/4	2.4	1.7
26	50BTB26H	2012	5.522	5.185	2	3-9/16	1-1/4	2.5	1.7
27	50BTB27H	2012	5.723	5.384	2	3-9/16	1-1/4	2.6	1.7
28	50BTB28H	2012	5.922	5.582	2	3-9/16	1-1/4	2.8	1.7
30	50BTB30H	2012	6.321	5.979	2	3-9/16	1-1/4	3.2	1.7
32	50BTB32H	2012	6.721	6.376	2	3-9/16	1-1/4	3.6	1.7
35	50BTB35H	2012	7.319	6.972	2	3-9/16	1-1/4	4.2	1.7
36	50BTB36H	2012	7.519	7.171	2	3-9/16	1-1/4	4.3	1.7
40	50BTB40	2012	8.316	7.966	2	3-9/16	1-1/4	5.2	1.7
42	50BTB42	2012	8.715	8.363	2	3-9/16	1-1/4	5.9	1.7
45	50BTB45	2012	9.313	8.960	2	3-9/16	1-1/4	6.5	1.7
48	50BTB48	2012	9.911	9.556	2	3-9/16	1-1/4	7.3	1.7
54	50BTB54	2012	11.106	10.749	2	3-9/16	1-1/4	9.0	1.7
60	50BTB60	2012	12.301	11.942	2	3-9/16	1-1/4	10.8	1.7
70	50BTB70	2517	14.292	13.931	2-1/2	4-1/4	1-3/4	14.0	3.5
72	50BTB72	2517	14.690	14.329	2-1/2	4-1/4	1-3/4	15.5	3.5
80	50BTB80	2517	16.282	15.920	2-1/2	4-1/4	1-3/4	19.5	3.5
84	50BTB84	2517	17.079	16.715	2-1/2	4-1/4	1-3/4	22.5	3.5
96	50BTB96	2517	19.466	19.102	2-1/2	4-1/4	1-3/4	29.0	3.5
112	50BTB112	2517	22.651	22.285	2-1/2	4-1/4	1-3/4	38.7	3.5

H - Denotes hardened teeth.

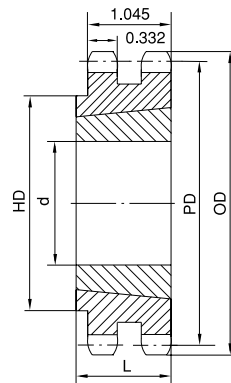
*Hub has recessed groove allowing for chain clearance.

No. 50 TAPER-BUSHED SPROCKETS

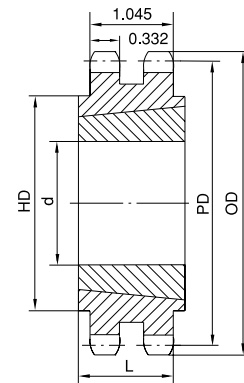
5/8" Pitch



Type A



Type B



Type C

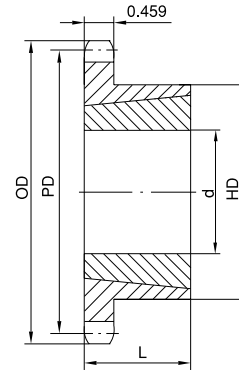
Double Taper-Bushed

No. of Teeth	Type	Part No.	Bushing	OD	PD	Max. Bore d	HD	L	App. Wt. (Lbs.)	
									Sprocket	Bushing
14	A	D50ATB14H	1008	3.113	2.809	1		7/8	0.8	0.3
15	A	D50ATB15H	1210	3.315	3.006	1-1/4		1	0.9	0.6
16	A	D50ATB16H	1210	3.517	3.204	1-1/4		1	1.1	0.6
17	A	D50ATB17H	1610	3.719	3.410	1-5/8		1	1.1	0.6
18	A	D50ATB18H	1610	3.920	3.599	1-5/8		1	1.3	0.9
19	A	D50ATB19H	1610	4.120	3.797	1-5/8		1	1.6	0.9
20	B	D50BTB20H	2012	4.321	3.995	2	3-1/4	1-1/4	1.5	1.7
21	B	D50BTB21H	2012	4.522	4.193	2	3-1/2	1-1/4	1.9	1.7
25	B	D50BTB25H	2012	5.322	4.987	2	4-9/32	1-1/4	3.8	1.7
30	B	D50BTB30	2517	6.321	5.979	2-1/2	5-9/32	1-3/4	7.5	3.5
36	C	D50CTB36	2517	7.519	7.171	2-1/2	4-1/4	1-3/4	9.4	3.5
42	C	D50CTB42	2517	8.715	8.363	2-1/2	4-1/4	1-3/4	13.4	3.5
48	C	D50CTB48	2517	9.911	9.556	2-1/2	4-1/4	1-3/4	18.6	3.5
52	C	D50CTB52	2517	10.707	10.351	2-1/2	4-3/8	1-3/4	22.2	3.5
60	C	D50CTB60	2517	12.301	11.942	2-1/2	4-3/8	1-3/4	30.3	3.5
68	C	D50CTB68	2517	13.893	13.533	2-1/2	4-3/8	1-3/4	39.4	3.5
76	C	D50CTB76	2517	15.486	15.124	2-1/2	4-3/8	1-3/4	41.2	3.5
84	C	D50CTB84	2517	17.079	16.715	2-1/2	4-3/8	1-3/4	45.3	3.5
95	C	D50CTB95	2517	19.267	18.903	2-1/2	4-3/8	1-3/4	58.8	3.5
102	C	D50CTB102	2517	20.661	20.295	2-1/2	4-3/8	1-3/4	67.1	3.5

H - Denotes hardened teeth.

TAPER-BUSHED SPROCKETS **No. 60**

3/4" Pitch



Type B

Single Taper-Bushed

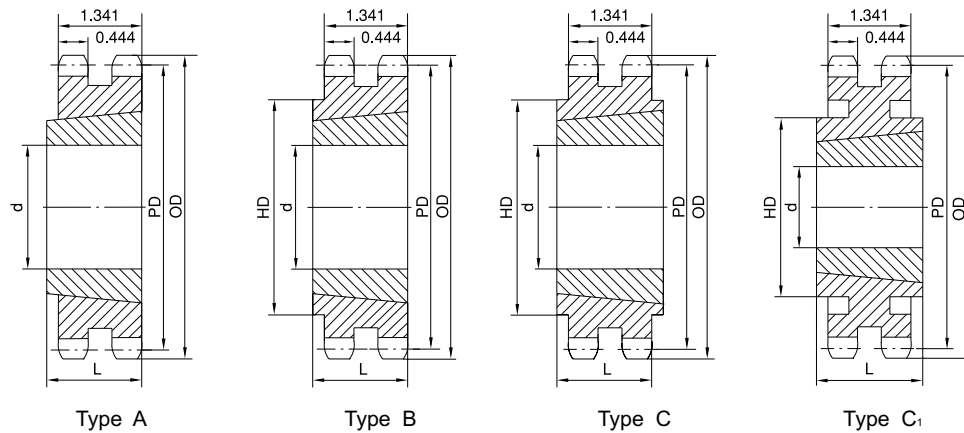
No. of Teeth	Part No.	Bushing	OD	PD	Max. Bore d	HD	L	App. Wt. (Lbs.)	
								Sprocket	Bushing
11	60BTB11H	1008	3.004	2.662	1	1-13/16*	7/8	0.6	0.3
12	60BTB12H	1008	3.249	2.898	1	1-15/16	7/8	0.8	0.3
13	60BTB13H	1210	3.493	3.134	1-1/4	2-15/32*	1	0.8	0.6
14	60BTB14H	1210	3.736	3.371	1-1/4	2-15/32	1	1.0	0.6
15	60BTB15H	1610	3.979	3.607	1-5/8	2-25/32	1	1.0	0.9
16	60BTB16H	1610	4.221	3.844	1-5/8	3	1	1.4	0.9
17	60BTB17H	1610	4.462	4.082	1-5/8	3-1/4	1	1.8	0.9
18	60BTB18H	1610	4.704	4.319	1-5/8	3-1/4	1	1.9	0.9
19	60BTB19H	1610	4.945	4.557	1-5/8	3-1/4	1	2.2	0.9
20	60BTB20H	2012	5.185	4.794	2	3-9/16	1-1/4	2.2	1.7
21	60BTB21H	2012	5.426	5.032	2	3-9/16	1-1/4	2.5	1.7
22	60BTB22H	2012	5.666	5.270	2	3-9/16	1-1/4	2.8	1.7
23	60BTB23H	2012	5.907	5.508	2	3-9/16	1-1/4	3.1	1.7
24	60BTB24H	2012	6.147	5.746	2	3-9/16	1-1/4	3.4	1.7
25	60BTB25H	2012	6.387	5.984	2	3-9/16	1-1/4	3.7	1.7
26	60BTB26H	2012	6.627	6.222	2	3-9/16	1-1/4	4.0	1.7
27	60BTB27H	2012	6.867	6.416	2	3-9/16	1-1/4	4.2	1.7
28	60BTB28H	2012	7.107	6.699	2	3-9/16	1-1/4	4.6	1.7
30	60BTB30H	2012	7.586	7.175	2	3-9/16	1-1/4	5.2	1.7
32	60BTB32H	2012	8.065	7.652	2	3-9/16	1-1/4	5.6	1.7
35	60BTB35H	2012	8.783	8.367	2	3-9/16	1-1/4	6.4	1.7
36	60BTB36H	2012	9.022	8.605	2	3-9/16	1-1/4	6.6	1.7
40	60BTB40	2012	9.980	9.559	2	3-9/16	1-1/4	8.3	1.7
42	60BTB42	2012	10.458	10.036	2	3-9/16	1-1/4	10.0	1.7
45	60BTB45	2012	11.175	10.752	2	3-9/16	1-1/4	11.5	1.7
48	60BTB48	2012	11.893	11.467	2	3-9/16	1-1/4	13.2	1.7
54	60BTB54	2517	13.327	12.899	2-1/2	4-1/4	1-3/4	17.1	3.5
60	60BTB60	2517	14.761	14.330	2-1/2	4-1/4	1-3/4	21.0	3.5
70	60BTB70	2517	17.150	16.717	2-1/2	4-1/4	1-3/4	27.6	3.5
72	60BTB72	2517	17.628	17.194	2-1/2	4-1/4	1-3/4	30.0	3.5
80	60BTB80	2517	19.539	19.103	2-1/2	4-1/4	1-3/4	36.3	3.5
84	60BTB84	2517	20.494	20.058	2-1/2	4-1/4	1-3/4	40.6	3.5

H - Denotes hardened teeth.

*Hub has recessed groove allowing for chain clearance.

No. 60 TAPER-BUSHED SPROCKETS

3/4" Pitch



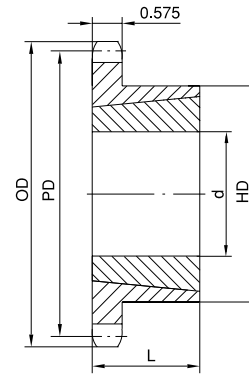
Double Taper-Bushed

No. of Teeth	Type	Part No.	Bushing	OD	PD	Max. Bore d	HD	L	App. Wt. (Lbs.)	
									Sprocket	Bushing
13	B	D60BTB13H	1215	3.493	3.134	1-1/4	2-1/4	1-1/2	1.2	1.6
14	B	D60BTB14H	1215	3.736	3.371	1-1/4	2-1/2	1-1/2	1.6	1.7
15	B	D60BTB15H	1615	3.979	3.607	1-5/8	2-13/16	1-1/2	1.8	1.8
16	B	D60BTB16H	1615	4.221	3.844	1-5/8	3	1-1/2	2.2	2.3
17	B	D60BTB17H	1615	4.462	4.082	1-5/8	3-1/4	1-1/2	2.5	2.8
18	A	D60ATB18H	2012	4.704	4.319	2		1-1/4	3.0	2.4
19	A	D60ATB19H	2012	4.945	4.557	2		1-1/4	3.5	2.9
20	B	D60BTB20H	2517	5.185	4.794	2-1/2	3-61/64	1-3/4	4.0	2.9
21	B	D60BTB21H	2517	5.426	5.032	2-1/2	4-3/16	1-3/4	5.0	3.8
25	B	D60BTB25H	2517	6.387	4.984	2-1/2	5-5/32	1-3/4	7.5	7.4
30	B	D60BTB30	2517	7.586	7.175	2-1/2	6-11/32	1-3/4	13.5	13.3
36	C	D60CTB36	2517	9.022	8.605	2-1/2	4-1/4	1-3/4	17.5	17.4
42	C	D60CTB42	2517	10.458	10.036	2-1/2	4-1/4	1-3/4	25.5	25.0
45	C	D60CTB45	2517	11.176	10.752	2-1/2	4-1/4	1-3/4	29.5	29.3
52	C	D60CTB52	2517	12.849	12.422	2-1/2	4-1/4	1-3/4	41.0	40.3
60	C ₁	D60CTB60	2517	14.761	14.330	2-1/2	4-1/4	1-3/4	32.5	33.5
68	C ₁	D60CTB68	2517	16.672	16.240	2-1/2	4-1/2	1-3/4	36.5	43.2
76	C ₁	D60CTB76	3020	18.583	18.149	3	5-1/4	2	42.5	47.8
95	C ₁	D60CTB95	3020	23.121	22.684	3	5-1/4	2	48.5	69.8

H - Denotes hardened teeth.

TAPER-BUSHED SPROCKETS **No. 80**

1" Pitch



Type B

Single Taper-Bushed

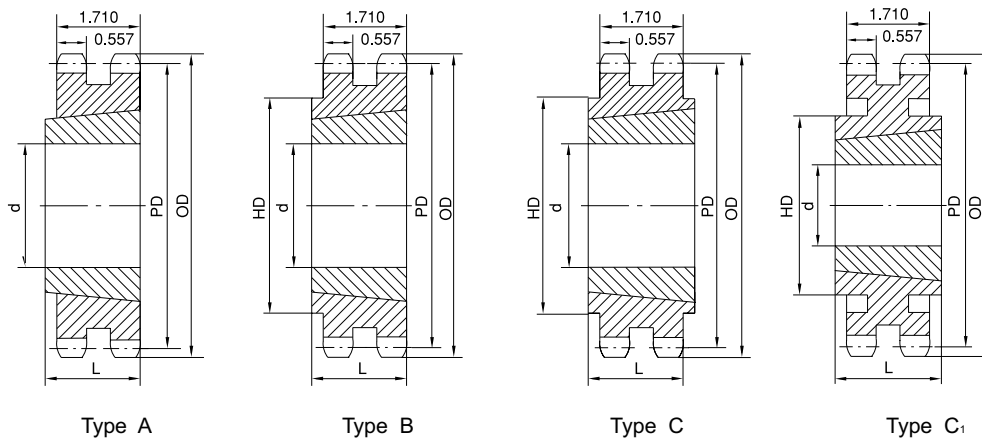
No. of Teeth	Part No.	Bushing	OD	PD	Max. Bore d	HD	L	App. Wt. (Lbs.)	
								Sprocket	Bushing
10	80BTB10H	1215	3.678	3.236	1-1/4	2-3/8*	1-1/2	1.1	0.8
11	80BTB11H	1215	4.006	3.549	1-1/4	2-15/32*	1-1/2	1.5	0.8
12	80BTB12H	1615	4.332	3.864	1-5/8	3*	1-1/2	1.8	1.2
13	80BTB13H	1615	4.657	4.179	1-5/8	3	1-1/2	2.3	1.2
14	80BTB14H	1615	4.982	4.494	1-5/8	3-1/4	1-1/2	2.5	1.2
15	80BTB15H	1615	5.305	4.810	1-5/8	3-1/4	1-1/2	2.7	1.2
16	80BTB16H	2012	5.627	5.126	2	3-9/16	1-1/4	2.8	1.7
17	80BTB17H	2012	5.950	5.442	2	3-9/16	1-1/4	3.1	1.7
18	80BTB18H	2012	6.271	5.759	2	3-9/16	1-1/4	3.6	1.7
19	80BTB19H	2012	6.593	6.076	2	3-9/16	1-1/4	4.1	1.7
20	80BTB20H	2517	6.914	6.392	2-1/2	4-1/4	1-3/4	5.5	1.7
21	80BTB21H	2517	7.235	6.710	2-1/2	4-1/4	1-3/4	6.0	3.5
22	80BTB22H	2517	7.555	7.027	2-1/2	4-1/4	1-3/4	6.5	3.5
23	80BTB23H	2517	7.875	7.344	2-1/2	4-1/4	1-3/4	7.0	3.5
24	80BTB24H	2517	8.196	7.661	2-1/2	4-1/4	1-3/4	7.5	3.5
25	80BTB25H	2517	8.516	7.979	2-1/2	4-1/4	1-3/4	8.1	3.5
26	80BTB26H	2517	8.836	8.296	2-1/2	4-1/4	1-3/4	8.8	3.5
27	80BTB27H	2517	9.156	8.614	2-1/2	4-1/4	1-3/4	9.0	3.5
28	80BTB28H	2517	9.475	8.931	2-1/2	4-1/4	1-3/4	9.5	3.5
30	80BTB30H	2517	10.114	9.567	2-1/2	4-1/4	1-3/4	11.5	3.5
32	80BTB32H	2517	10.753	10.202	2-1/2	4-1/4	1-3/4	12.0	3.5
35	80BTB35H	2517	11.711	11.156	2-1/2	4-1/4	1-3/4	15.2	3.5
36	80BTB36H	2517	12.030	11.474	2-1/2	4-1/4	1-3/4	17.0	3.5
40	80BTB40	2517	13.306	12.746	2-1/2	4-1/4	1-3/4	21.0	3.5
45	80BTB45	2517	14.901	14.336	2-1/2	4-1/4	1-3/4	26.5	3.5
48	80BTB48	2517	15.857	15.290	2-1/2	4-1/4	1-3/4	29.5	3.5
54	80BTB54	2517	17.769	17.198	2-1/2	4-1/4	1-3/4	38.5	3.5
60	80BTB60	2517	19.681	19.107	2-1/2	4-1/4	1-3/4	45.0	3.5
70	80BTB70	3020	22.867	22.289	3	5-1/4	2	52.3	6.5
80	80BTB80	3020	26.052	25.471	3	5-1/4	2	69.2	6.5

H - Denotes hardened teeth.

*Hub has recessed groove allowing for chain clearance.

No. 80 TAPER-BUSHED SPROCKETS

1" Pitch



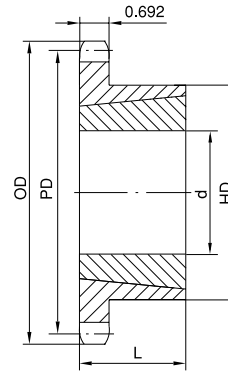
Double Taper-Bushed

No. of Teeth	Type	Part No.	Bushing	OD	PD	Max. Bore d	HD	L	App. Wt. (Lbs.)	
									Sprocket	Bushing
13	A	D80ATB13H	1615	4.657	4.179	1-5/8		1-1/2	3.4	1.2
14	A	D80ATB14H	2012	4.982	4.494	2		1-1/4	3.5	1.7
15	A	D80ATB15H	2012	5.305	4.810	2		1-1/4	4.3	1.7
16	A	D80ATB16H	2517	5.627	5.126	2-1/2		1-3/4	3.8	3.5
17	A	D80ATB17H	2517	5.950	5.442	2-1/2		1-3/4	5.1	3.5
18	A	D80ATB18H	2517	6.271	5.759	2-1/2		1-3/4	6.4	3.5
19	B	D80BTB19H	3020	6.593	6.076	3	5	2	5.6	6.5
20	B	D80BTB20H	3020	6.914	6.392	3	5-1/4	2	7.1	6.5
21	B	D80BTB21H	3020	7.235	6.710	3	5-9/16	2	8.9	6.5
25	B	D80BTB25H	3020	8.516	7.979	3	6-7/8	2	16.5	6.5
30	C	D80CTB30	3020	10.114	9.567	3	5-1/4	2	25.1	6.5
36	C	D80CTB36	3020	12.030	11.474	3	5-1/4	2	39.4	6.5
42	C	D80CTB42	3020	13.944	13.392	3	5-1/4	2	36.4	6.5
45	C ₁	D80CTB45	3020	14.901	14.336	3	5-1/4	2	41.4	6.5
52	C ₁	D80CTB52	3020	17.132	16.562	3	5-1/4	2	56.2	6.5
60	C ₁	D80CTB60	3020	19.681	19.107	3	5-1/4	2	66.3	6.5
68	C ₁	D80CTB68	3020	22.230	21.653	3	5-1/4	2	72.0	6.5
76	C ₁	D80CTB76	3020	24.778	24.198	3	5-1/4	2	89.1	6.5
95	C ₁	D80CTB95	3020	30.828	30.245	3	5-1/4	2	112.0	6.5

H - Denotes hardened teeth.

TAPER-BUSHED SPROCKETS **No. 100**

1-1/4" Pitch



Type B

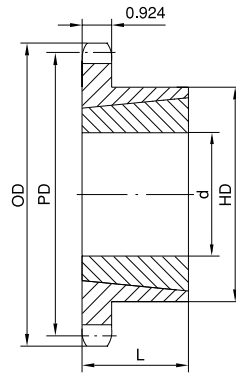
Single Taper-Bushed

No. of Teeth	Part No.	Bushing	OD	PD	Max. Bore d	HD	L	App. Wt. (Lbs.)	
								Sprocket	Bushing
11	100BTB11H	1615	5.007	4.437	1-5/8	3	1-1/2	2.7	1.2
12	100BTB12H	1615	5.415	4.830	1-5/8	3-1/4	1-1/2	3.5	1.2
13	100BTB13H	2012	5.821	5.223	2	3-9/16	1-1/4	3.6	1.7
14	100BTB14H	2012	6.227	5.617	2	3-9/16	1-1/4	3.9	1.7
15	100BTB15H	2517	6.631	6.012	2-1/2	4-1/4	1-3/4	5.0	3.5
16	100BTB16H	2517	7.034	6.407	2-1/2	4-1/2	1-3/4	6.4	3.5
17	100BTB17H	2517	7.437	6.803	2-1/2	4-1/2	1-3/4	7.1	3.5
18	100BTB18H	2517	7.839	7.198	2-1/2	4-1/2	1-3/4	7.8	3.5
19	100BTB19H	2517	8.241	7.594	2-1/2	4-1/2	1-3/4	8.7	3.5
20	100BTB20H	2517	8.642	7.991	2-1/2	4-1/2	1-3/4	9.6	3.5
21	100BTB21H	2517	9.043	8.387	2-1/2	4-1/2	1-3/4	10.6	3.5
22	100BTB22H	2517	9.444	8.783	2-1/2	4-1/2	1-3/4	11.0	3.5
24	100BTB24H	2517	10.245	9.577	2-1/2	4-1/2	1-3/4	13.0	3.5
26	100BTB26H	2517	11.045	10.370	2-1/2	4-1/2	1-3/4	15.0	3.5
28	100BTB28H	3020	11.844	11.164	3	5-1/4	2	16.5	6.5
30	100BTB30H	3020	12.643	11.958	3	5-1/4	2	22.0	6.5
32	100BTB32H	3020	13.442	12.753	3	5-1/4	2	23.0	6.5
35	100BTB35	3020	14.639	13.945	3	5-1/4	2	28.0	6.5
36	100BTB36	3020	15.038	14.342	3	5-1/4	2	31.0	6.5
40	100BTB40	3020	16.633	15.932	3	5-1/4	2	37.0	6.5
45	100BTB45	3020	18.626	17.919	3	5-1/4	2	46.0	6.5
48	100BTB48	3020	19.821	19.112	3	5-1/4	2	53.0	6.5
54	100BTB54	3020	22.212	21.498	3	5-1/4	2	62.0	6.5
60	100BTB60	3020	24.601	23.884	3	5-1/4	2	72.0	6.5

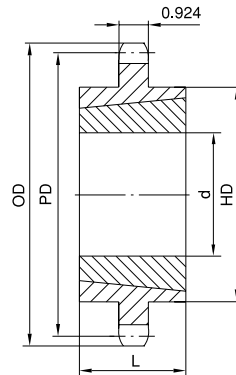
H - Denotes hardened teeth.

No. 120 TAPER-BUSHED SPROCKETS

1-1/2" Pitch



Type B



Type C

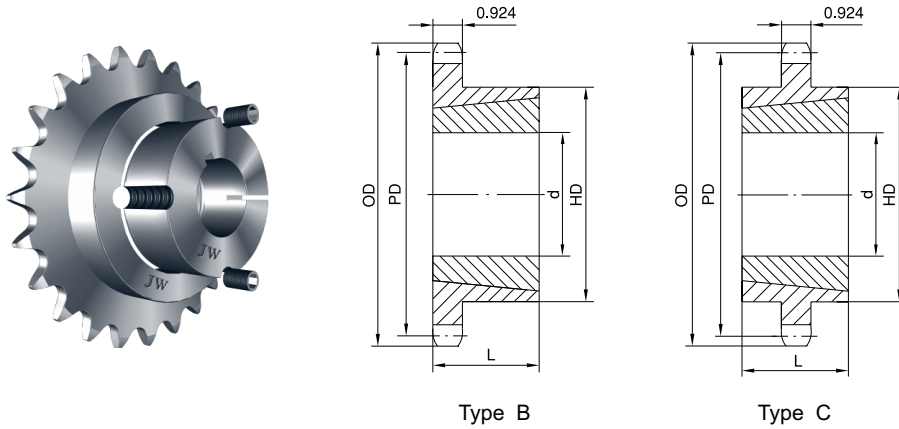
Single Taper-Bushed

No. of Teeth	Type	Part No.	Bushing	OD	PD	Max. Bore d	HD	L	App. Wt. (Lbs.)	
									Sprocket	Bushing
12	B	120BTB12H	2012	6.498	5.796	2	3-9/16	1-1/4	5.5	1.7
13	B	120BTB13H	2517	6.896	6.268	2-1/2	4-1/4	1-3/4	6.0	3.5
14	B	120BTB14H	2517	7.472	6.741	2-1/2	4-1/4	1-3/4	7.0	3.5
15	B	120BTB15H	2517	7.957	7.215	2-1/2	4-1/4	1-3/4	8.0	3.5
16	B	120BTB16H	3020	8.441	7.689	3	5-1/4	2	10.0	6.5
17	B	120BTB17H	3020	8.924	8.163	3	5-1/4	2	11.0	6.5
18	B	120BTB18H	3020	9.407	8.638	3	5-1/4	2	12.0	6.5
19	B	120BTB19H	3020	9.889	9.113	3	5-1/4	2	14.0	6.5
20	B	120BTB20H	3020	10.371	9.588	3	5-1/4	2	15.5	6.5
21	B	120BTB21H	3020	10.851	10.064	3	5-1/4	2	17.5	6.5
24	B	120BTB24H	3020	12.294	11.492	3	5-1/4	2	23.5	6.5
26	B	120BTB26H	3020	13.254	12.444	3	5-1/4	2	28.5	6.5
30	B	120BTB30	3020	15.171	14.351	3	5-1/4	2	33.5	6.5
35	C	120CTB35	3020	17.566	16.734	3	5-1/4	2	52.0	6.5
45	C	120CTB45	3030	22.351	21.503	3	5-7/8	3	82.0	9.2
60	C	120CTB60	3535	29.522	28.661	3-1/2	6-1/2	3-1/2	140.0	14.0
70	C	120CTB70	3535	34.301	33.434	3-1/2	6-1/2	3-1/2	175.0	14.0
80	C	120CTB80	3535	39.078	38.207	3-1/2	6-1/2	3-1/2	220.0	14.0

H - Denotes hardened teeth.

TAPER-BUSHED SPROCKETS **No. 140**

1-3/4" Pitch



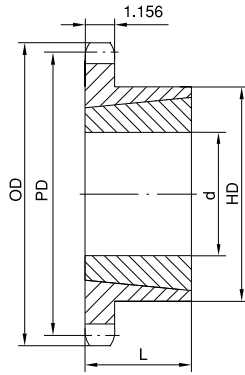
Single Taper-Bushed

No. of Teeth	Type	Part No.	Bushing	OD	PD	Max. Bore d	HD	L	App. Wt. (Lbs.)	
									Sprocket	Bushing
12	B	140BTB12H	2517	7.581	6.762	2-1/2	4-1/4	1-3/4	7.0	3.5
13	B	140BTB13H	3020	8.150	7.313	3	5-1/4	2	8.0	6.5
14	B	140BTB14H	3020	8.718	7.864	3	5-1/4	2	10.0	6.5
15	B	140BTB15H	3020	9.283	8.417	3	5-1/4	2	12.0	6.5
16	B	140BTB16H	3020	9.848	8.970	3	5-1/4	2	14.0	6.5
17	B	140BTB17H	3020	10.411	9.524	3	5-1/4	2	16.0	6.5
18	B	140BTB18H	3020	10.975	10.078	3	5-1/4	2	18.0	6.5
19	B	140BTB19H	3020	11.537	10.632	3	5-1/4	2	20.0	6.5
21	B	140BTB21H	3020	12.660	11.742	3	5-1/4	2	24.0	6.5
26	B	140BTB26	3020	15.463	14.518	3	5-1/4	2	40.0	6.5
35	C	140CTB35	3535	20.494	19.523	3-1/2	6-1/2	3-1/2	78.0	14.0
45	C	140CTB45	4040	26.076	25.087	4	7-3/4	4	118.0	22.0
60	C	140CTB60	4040	34.442	33.438	4	7-3/4	4	188.0	22.0
70	C	140CTB70	4040	40.017	39.006	4	7-3/4	4	241.0	22.0

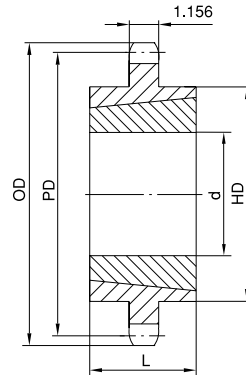
H - Denotes hardened teeth.

No. 160 TAPER-BUSHED SPROCKETS

2" Pitch



Type B



Type C

Single Taper-Bushed

No. of Teeth	Type	Part No.	Bushing	OD	PD	Max. Bore d	HD	L	App. Wt. (Lbs.)	
									Sprocket	Bushing
11	B	160BTB11H	2517	8.011	7.099	2-1/2	4-1/4	1-3/4	9.0	3.5
12	B	160BTB12H	3020	8.664	7.727	3	5-1/4	2	11.0	6.5
13	B	160BTB13H	3020	9.314	8.357	3	5-1/4	2	13.0	6.5
14	B	160BTB14H	3020	9.963	8.988	3	5-1/4	2	16.0	6.5
15	B	160BTB15H	3535	10.609	9.620	3-1/2	6-1/2	3-1/2	25.0	14.0
16	B	160BTB16H	3535	11.255	10.252	3-1/2	6-1/2	3-1/2	28.0	14.0
17	B	160BTB17H	3535	11.899	10.885	3-1/2	6-1/2	3-1/2	32.0	14.0
18	B	160BTB18H	3535	12.543	11.518	3-1/2	6-1/2	3-1/2	35.0	14.0
19	B	160BTB19H	3535	13.185	12.151	3-1/2	6-1/2	3-1/2	39.0	14.0
21	B	160BTB21	3535	14.470	13.419	3-1/2	6-1/2	3-1/2	48.0	14.0
26	B	160BTB26	3535	17.671	16.593	3-1/2	6-1/2	3-1/2	68.0	14.0
35	C	160CTB35	4040	23.422	22.312	4	7-3/4	4	118.0	22.0
45	C	160CTB45	4040	29.802	28.671	4	7-3/4	4	186.0	22.0
60	C	160CTB60	4545	39.362	38.215	4-1/2	8-3/4	4-1/2	292.0	30.0

H - Denotes hardened teeth.