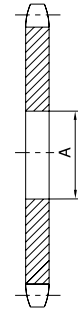
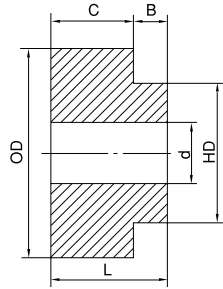
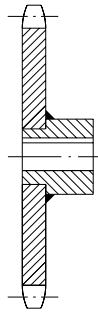
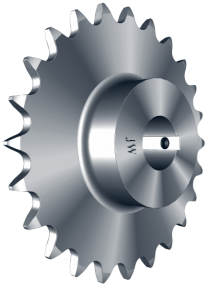


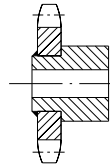
# WELD-ON SPROCKETS



All black oxide finish.



Larger sprockets are welded, as shown in the diagram above.



To prevent interference of the chain, smaller sprockets are welded as shown in the diagram above.

Hub No.	Chain No.	d		OD	HD	L	B	C	App. Wt. (Lbs.)
		Min.	Max.						
V	35-60	0.500	0.875	1.438	1.125	1.188	0.438	0.750	0.32
W	35-80	0.500	1.250	1.813	1.625	1.438	0.438	1.000	0.64
X	40-100	0.500	1.500	2.500	2.000	1.438	0.438	1.000	1.42
XX	40-100	1.000	1.625	3.000	2.000	1.500	0.438	1.063	2.20
Y	100	1.000	2.000	3.750	2.750	1.875	0.688	1.188	3.92

Hub No.	A
V	1-1/8
W	1-5/8
X	2
XX	2
Y	2-3/4



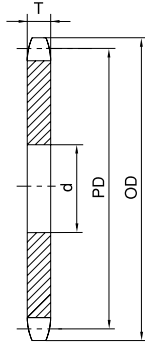
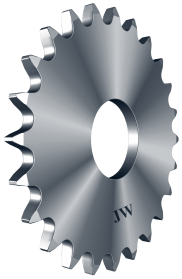
## WELD-ON SPROCKETS

### Weld-On Finished Sprocket Plates

No. of Teeth	35	40	50	60	80	100
	3/8" Pitch	1/2" Pitch	5/8" Pitch	3/4" Pitch	1" Pitch	1-1/4" Pitch
9				60FV9	80FW9	
10			50FV10	60FV10	80FW10	100X10
11			50FV11	60FV11	80FW11	100X11
12		40FV12	50FW12	60FW12	80FX12	100X12
13		40FV13	50FW13	60FW13	80FX13	100X13
14		40FV14	50FW14	60FW14	80FX14	100Y14
15	35FV15	40FV15	50FW15	60FW15	80FX15	100Y15
16	35FV16	40FW16	50FW16	60FX16	80FX16	100Y16
17	35FV17	40FW17	50FX17	60FX17	80FX17	100Y17
18	35FV18	40FW18	50FX18	60FX18	80FX18	100Y18
19	35FV19	40FW19	50FX19	60FX19	80FX19	100Y19
20	35FV20	40FX20	50FX20	60FX20	80FX20	100Y20
21	35FV21	40FX21	50FX21	60FX21	80FX21	100Y21
22	35FW22	40FX22	50FX22	60FX22	80FX22	100Y22
23	35FW23	40FX23	50FX23	60FX23	80FX23	100Y23
24	35FW24	40FX24	50FX24	60FX24	80FX24	100Y24
25	35FW25	40FX25	50FX25	60FX25	80FX25	100Y25
26	35FW26	40FX26	50FX26	60FX26	80FX26	100Y26
27	35FW27	40FX27	50FX27	60FX27	80FX27	
28	35FW28	40FX28	50FX28	60FX28	80FX28	100Y28
29	35FW29	40FX29	50FX29	60FX29	80FX29	
30	35FW30	40FX30	50FX30	60FX30	80FX30	100Y30
31	35FW31	40FX31	50FX31	60FX31		
32	35FW32	40FX32	50FX32	60FX32	80FX32	100Y32
33	35FW33	40FX33	50FX33	60FX33	80FX33	
34	35FW34	40FX34	50FX34	60FX34	80FX34	
35	35FW35	40FX35	50FX35	60FX35	80FX35	100Y35
36	35FW36	40FX36	50FX36	60FX36	80FX36	100Y36
37	35FW37	40FX37	50FX37	60FX37		
38	35FW38	40FX38	50FX38	60FX38		
39	35FW39	40FX39	50FX39	60FX39		
40	35FW40	40FX40	50FX40	60FX40	80FX40	
42	35FW42	40FX42	50FX42	60FX42		
43	35FW43	40FX43	50FX43	60FX43		
44	35FW44	40FX44	50FX44	60FX44		
45	35FW45	40FX45	50FX45	60FX45	80FX45	
48	35FW48	40FX48	50FX48	60FX48	80FX48	
50	35FW50	40FX50	50FX50	60FX50		
54	35FW54	40FX54	50FX54	60FX54	80FX54	
60	35FW60	40FX60	50FX60	60FX60	80FX60	
70	35FW70	40FX70	50FX70	60FX70		
72	35FW72	40FX72	50FX72	60FX72		
80	35FW80	40FX80	50FX80	60FX80		
84	35FW84	40FX84	50FX84	60FX84		
90		40FX90				
96	35FW96		50FX96	60FX96		

For OD, PD, and L dimensions, please refer to the A Plate dimensions on corresponding sprocket pages.  
(eg. 50FX25 OD= the OD dimension for the 50A25H on page 17)

# WELD-ON SPROCKETS



## No.60 Large Hole A Plates

No. of Teeth	Part No.	d
20	60A20-214H	2.875
21	60A21-214H	2.875
22	60A22-214H	2.875
23	60A23-214H	2.875
24	60A24-214H	2.875
25	60A25-214H	2.875
26	60A26-214H	2.875
27	60A27-214H	2.875
28	60A28-214H	2.875
29	60A29-214H	2.875
30	60A30-406H	4.375
31	60A31-406H	4.375
32	60A32-406H	4.375
33	60A33-406H	4.375
34	60A34-406H	4.375
35	60A35-406H	4.375
36	60A36-406H	4.375
37	60A37-406	4.375
38	60A38-406	4.375
39	60A39-406	4.375
40	60A40-406	4.375
41	60A41-406	4.375
42	60A42-406	4.375
43	60A43-406	4.375
44	60A44-406	4.375
45	60A45-406	4.375
46	60A46-406	4.375
47	60A47-406	4.375
48	60A48-406	4.375
50	60A50-406	4.375
54	60A54-406	4.375
56	60A56-406	4.375
60	60A60-406	4.375
70	60A70-406	4.375
72	60A72-406	4.375

## No.80 Large Hole A Plates

No. of Teeth	Part No.	d
19	80A19-406H	4.375
20	80A20-406H	4.375
21	80A21-406H	4.375
22	80A22-406H	4.375
23	80A23-406H	4.375
24	80A24-406H	4.375
24	80A24-510H	5.625
25	80A25-406H	4.375
25	80A25-510H	5.625
26	80A26-406H	4.375
26	80A26-510H	5.625
27	80A27-406H	4.375
27	80A27-510H	5.625
28	80A28-406H	4.375
28	80A28-510H	5.625
29	80A29-406H	4.375
30	80A30-406H	4.375
30	80A30-510H	5.625
31	80A31-406H	4.375
32	80A32-406H	4.375
33	80A33-406H	4.375
34	80A34-406H	4.375
35	80A35-406H	4.375
36	80A36-406H	4.375
36	80A36-510H	5.625
37	80A37-406	4.375
38	80A38-406	4.375
39	80A39-406	4.375
40	80A40-406	4.375
40	80A40-510	5.625
41	80A41-406	4.375
42	80A42-406	4.375
42	80A42-510	5.625
43	80A43-406	4.375
44	80A44-406	4.375
45	80A45-510	5.625
46	80A46-406	4.375
47	80A47-406	4.375
48	80A48-406	4.375
50	80A50-406	4.375
52	80A52-406	4.375
54	80A54-406	4.375
56	80A56-406	4.375
60	80A60-406	4.375
70	80A70-406	4.375
72	80A72-406	4.375

H - Denotes hardened teeth.

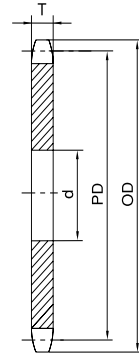
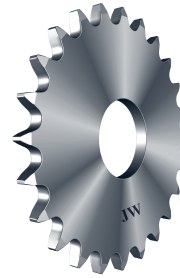
For OD, PD, and T dimensions, please refer to the A Plate dimensions on the corresponding sprocket pages.

(eg. 60A25-214H OD= the OD dimension for the 60A25H on page 21)

## WELD-ON SPROCKETS

### No.100 Large Hole A Plates

No. of Teeth	Part No.	d
17	100A17-406H	4.375
18	100A18-406H	4.375
19	100A19-406H	4.375
20	100A20-406H	4.375
21	100A21-406H	4.375
21	100A21-510H	5.625
22	100A22-406H	4.375
22	100A22-510H	5.625
23	100A23-406H	4.375
24	100A24-406H	4.375
24	100A24-510H	5.625
25	100A25-406H	4.375
25	100A25-510H	5.625
26	100A26-406H	4.375
26	100A26-510H	5.625
27	100A27-406H	4.375
27	100A27-510H	5.625
28	100A28-406H	4.375
28	100A28-510H	5.625
29	100A29-406H	4.375
29	100A29-510H	5.625
30	100A30-406H	4.375
30	100A30-510H	5.625
31	100A31-406H	4.375
32	100A32-406H	4.375
32	100A32-510H	5.625
33	100A33-406	4.375
34	100A34-406	4.375
35	100A35-406	4.375
35	100A35-510	5.625
36	100A36-406	4.375
36	100A36-510	5.625
37	100A37-406	4.375
38	100A38-406	4.375
39	100A39-406	4.375
39	100A39-510	5.625
40	100A40-406	4.375
40	100A40-510	5.625
42	100A42-406	4.375
42	100A42-510	5.625
45	100A45-406	4.375
45	100A45-510	5.625
48	100A48-406	4.375
48	100A48-510	5.625
54	100A54-406	4.375
60	100A60-406	4.375
60	100A60-510	5.625
70	100A70-406	4.375



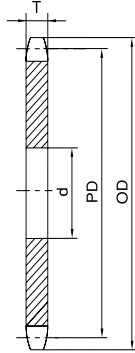
### No.120 Large Hole A Plates

No. of Teeth	Part No.	d
16	120A16-510H	5.625
17	120A17-510H	5.625
18	120A18-510H	5.625
19	120A19-510H	5.625
20	120A20-510H	5.625
21	120A21-510H	5.625
22	120A22-510H	5.625
23	120A23-510H	5.625
24	120A24-510H	5.625
25	120A25-510H	5.625
26	120A26-510H	5.625
27	120A27-510	5.625
28	120A28-510	5.625
30	120A30-510	5.625
32	120A32-510	5.625
35	120A35-510	5.625
36	120A36-510	5.625
40	120A40-510	5.625
40	120A40-608	6.500
42	120A42-510	5.625
42	120A42-608	6.500
45	120A45-510	5.625
48	120A48-510	5.625
60	120A60-510	5.625
60	120A60-608	6.500
70	120A70-510	5.625
80	120A80-510	5.625

H - Denotes hardened teeth.

For OD, PD, and T dimensions, please refer to the A Plate dimensions on the corresponding sprocket pages.  
(eg. 100A25-406H OD= the OD dimension for the 100A25H on page 30)

# WELD-ON SPROCKETS



## No.140 Large Hole A Plates

No. of Teeth	Part No.	d
11	140A11-406H	4.375
12	140A12-406H	4.375
13	140A13-510H	5.625
14	140A14-510H	5.625
15	140A15-510H	5.625
16	140A16-510H	5.625
17	140A17-510H	5.625
18	140A18-510H	5.625
19	140A19-510H	5.625
20	140A20-510H	5.625
21	140A21-510H	5.625
22	140A22-510H	5.625
23	140A23-510	5.625
24	140A24-510	5.625
25	140A25-510	5.625
26	140A26-510	5.625
28	140A28-510	5.625
30	140A30-510	5.625
32	140A32-510	5.625
35	140A35-510	5.625
36	140A36-510	5.625
40	140A40-608	6.500
45	140A45-608	6.500
48	140A48-608	6.500
54	140A54-608	6.500
60	140A60-608	6.500

## No.160 Large Hole A Plates

No. of Teeth	Part No.	d
12	160A12-510H	5.625
13	160A13-510H	5.625
14	160A14-510H	5.625
15	160A15-510H	5.625
16	160A16-510H	5.625
17	160A17-510H	5.625
18	160A18-510H	5.625
19	160A19-510H	5.625
20	160A20-510H	5.625
21	160A21-510	5.625
22	160A22-510	5.625
23	160A23-510	5.625
24	160A24-510	5.625
25	160A25-510	5.625
26	160A26-510	5.625
27	160A27-510	5.625
28	160A28-510	5.625
30	160A30-510	5.625
35	160A35-608	6.500
40	160A40-608	6.500
45	160A45-608	6.500

H - Denotes hardened teeth.

For OD, PD, and L dimensions, please refer to the A Plate dimensions on the corresponding sprocket pages.  
(eg. 160A25-510 OD= the OD dimension for the 160A25 on page 37)