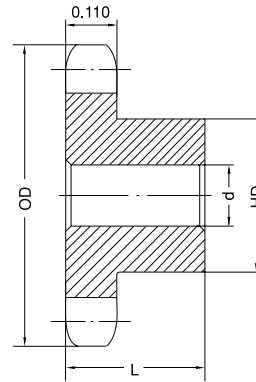
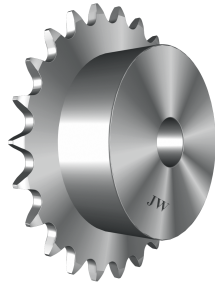


STAINLESS STEEL No. 25

1/4" Pitch



Type B

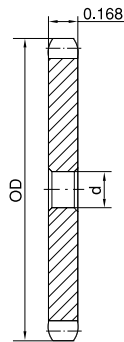
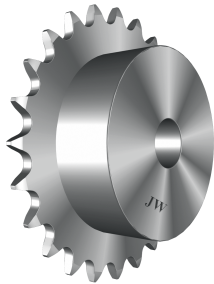
Single Type B — Stainless Steel

No. of Teeth	Part No.	OD	d		HD	L	App. Wt. (Lbs.)
			Min.	Max.			
9	25B9SS	0.840	1/4	1/4	7/16*	1/2	0.03
10	25B10SS	0.920	1/4	1/4	1/2*	1/2	0.03
11	25B11SS	1.000	1/4	5/16	9/16*	1/2	0.03
12	25B12SS	1.080	1/4	3/8	5/8*	1/2	0.06
13	25B13SS	1.170	1/4	7/16	23/32*	1/2	0.07
14	25B14SS	1.250	1/4	9/16	13/16	1/2	0.08
15	25B15SS	1.330	1/4	9/16	57/64	1/2	0.10
16	25B16SS	1.410	1/4	9/16	31/32	1/2	0.12
17	25B17SS	1.490	1/4	5/8	1-1/32	1/2	0.14
18	25B18SS	1.570	1/4	3/4	1-1/8	1/2	0.16
19	25B19SS	1.650	1/4	13/16	1-7/32	1/2	0.19
20	25B20SS	1.730	1/4	7/8	1-9/32	5/8	0.25
21	25B21SS	1.810	1/4	7/8	1-3/8	5/8	0.28
22	25B22SS	1.890	1/4	15/16	1-7/16	5/8	0.31
23	25B23SS	1.970	1/4	1	1-1/2	5/8	0.32
24	25B24SS	2.050	3/8	1	1-1/2	5/8	0.33
25	25B25SS	2.130	3/8	1	1-1/2	5/8	0.34
26	25B26SS	2.210	3/8	1	1-1/2	5/8	0.35
28	25B28SS	2.370	3/8	1	1-1/2	5/8	0.36
30	25B30SS	2.530	3/8	1	1-1/2	5/8	0.38
36	25B36SS	3.010	3/8	1	1-1/2	3/4	0.50
40	25B40SS	3.330	1/2	1-3/8	2	3/4	0.53
45	25B45SS	3.730	1/2	1-3/8	2	3/4	0.56
60	25B60SS	4.920	1/2	1-3/8	2	3/4	1.10

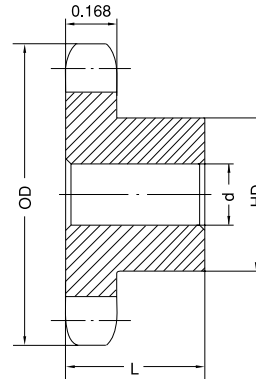
* Hub has recessed groove allowing for chain clearance. For dimensions, please refer to page 6.
Maximum bores shown, accommodate standard keyway with setscrew positioned over keyway.

No. 35 STAINLESS STEEL

3/8" Pitch



Type A



Type B

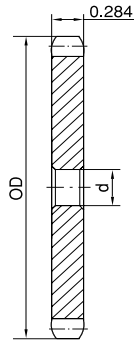
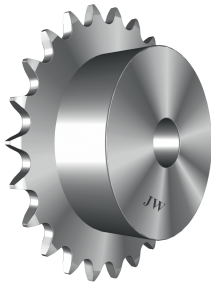
Single Type A & B — Stainless Steel

No. of Teeth	OD	Part No.	Type	d	App. Wt. (Lbs.)	Part No.	Type	d		HD	L	App. Wt. (Lbs.)
								Min.	Max.			
9	1.260					35B9SS	B	3/8	3/8	27/32*	3/4	0.10
10	1.380					35B10SS	B	3/8	9/16	31/32*	3/4	0.15
11	1.500					35B11SS	B	3/8	9/16	1-1/16*	3/4	0.20
12	1.630					35B12SS	B	1/2	5/8	1-7/32*	3/4	0.22
13	1.750					35B13SS	B	1/2	3/4	1-1/4*	3/4	0.25
14	1.870					35B14SS	B	1/2	7/8	1-1/4	3/4	0.26
15	1.990					35B15SS	B	1/2	7/8	1-11/32	3/4	0.30
16	2.110					35B16SS	B	1/2	15/16	1-15/32	3/4	0.40
17	2.230					35B17SS	B	1/2	1-1/16	1-19/32	3/4	0.43
18	2.350					35B18SS	B	1/2	1-3/16	1-23/32	3/4	0.50
19	2.470					35B19SS	B	1/2	1-1/4	1-27/32	3/4	0.56
20	2.590					35B20SS	B	1/2	1-5/16	1-15/16	3/4	0.68
21	2.710					35B21SS	B	1/2	1-3/8	2	7/8	0.80
22	2.830					35B22SS	B	1/2	1-3/8	2	7/8	0.82
23	2.950					35B23SS	B	1/2	1-3/8	2	7/8	0.87
24	3.070					35B24SS	B	1/2	1-3/8	2	7/8	0.89
25	3.190					35B25SS	B	1/2	1-3/8	2	7/8	0.91
26	3.310					35B26SS	B	1/2	1-3/8	2	7/8	0.93
28	3.550					35B28SS	B	1/2	1-3/8	2	7/8	1.00
30	3.790					35B30SS	B	1/2	1-3/8	2	7/8	1.06
35	4.390					35B35SS	B	5/8	1-1/2	2-1/4	7/8	1.56
40	4.990	35A40SS	A	19/32	1.04	35B40SS	B	5/8	1-1/2	2-1/4	1	1.70
45	5.590	35A45SS	A	19/32	1.26	35B45SS	B	5/8	1-1/2	2-1/4	1	2.18
60	7.380	35A60SS	A	23/32	2.10	35B60SS	B	3/4	1-1/2	2-1/4	1	3.00

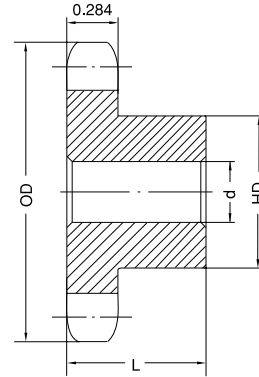
* Hub has recessed groove allowing for chain clearance. For dimensions, please refer to page 8.
Maximum bores shown, accommodate standard keyway with setscrew positioned over keyway.

STAINLESS STEEL No. 40

1/2" Pitch



Type A



Type B

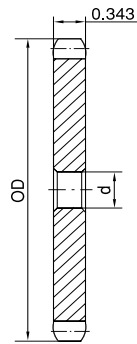
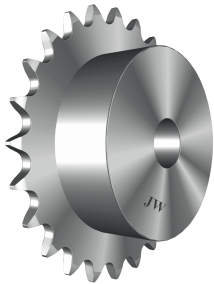
Single Type A & B — Stainless Steel

No. of Teeth	OD	Part No.	Type	d	App. Wt. (Lbs.)	Part No.	Type	d		HD	L	App. Wt. (Lbs.)
								Min.	Max.			
10	1.840					40B10SS	B	1/2	3/4	1-1/4*	7/8	0.26
11	2.000					40B11SS	B	1/2	13/16	1-3/8*	7/8	0.36
12	2.170					40B12SS	B	1/2	15/16	1-9/16*	7/8	0.44
13	2.330					40B13SS	B	1/2	1-1/16	1-9/16	7/8	0.50
14	2.490					40B14SS	B	1/2	1-1/8	1-11/16	7/8	0.60
15	2.650					40B15SS	B	5/8	1-1/4	1-13/16	7/8	0.65
16	2.810					40B16SS	B	5/8	1-3/8	2	7/8	0.82
17	2.980					40B17SS	B	5/8	1-7/16	2-1/8	1	1.06
18	3.140					40B18SS	B	5/8	1-1/2	2-5/16	1	1.24
19	3.300					40B19SS	B	5/8	1-3/4	2-1/2	1	1.42
20	3.460					40B20SS	B	5/8	1-7/8	2-5/8	1	1.60
21	3.620					40B21SS	B	5/8	1-7/8	2-3/4	1	1.68
22	3.780					40B22SS	B	5/8	1-7/8	2-7/8	1	1.81
23	3.940					40B23SS	B	5/8	2	3	1	2.10
24	4.100					40B24SS	B	5/8	2-1/4	3-1/4	1	2.20
25	4.260					40B25SS	B	5/8	2-1/4	3-1/4	1	1.84
26	4.420	40A26SS	A	19/32	1.31	40B26SS	B	5/8	2-1/4	3-1/4	1	2.40
28	4.740	40A28SS	A	19/32	1.35	40B28SS	B	5/8	2-1/4	3-1/4	1	2.75
30	5.060	40A30SS	A	19/32	1.39	40B30SS	B	5/8	2-1/4	3-1/4	1	2.88
35	5.860	40A35SS	A	19/32	1.92	40B35SS	B	5/8	2-1/4	3-1/4	1	3.32
40	6.650	40A40SS	A	23/32	2.36	40B40SS	B	3/4	2-3/8	3-1/2	1	4.28
45	7.450	40A45SS	A	23/32	3.13	40B45SS	B	3/4	2-3/8	3-1/2	1	4.66
60	9.840	40A60SS	A	23/32	5.50	40B60SS	B	3/4	2-3/8	3-1/2	1	7.00

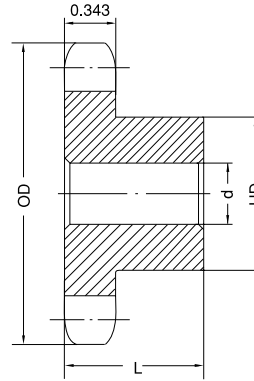
* Hub has recessed groove allowing for chain clearance. For dimensions, please refer to page 14.
Maximum bores shown, accommodate standard keyway with setscrew positioned over keyway.

No. 50 STAINLESS STEEL

5/8" Pitch



Type A



Type B

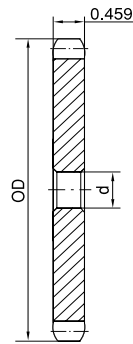
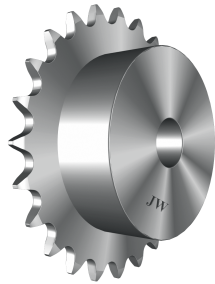
Single Type A & B — Stainless Steel

No. of Teeth	OD	Part No.	Type	d	App. Wt. (Lbs.)	Part No.	Type	d		HD	L	App. Wt. (Lbs.)
								Min.	Max.			
10	2.300					50B10SS	B	5/8	7/8	1-9/16*	1	0.5
11	2.500					50B11SS	B	5/8	1	1-3/4*	1	0.6
12	2.710					50B12SS	B	5/8	1-1/4	1-63/64*	1	0.7
13	2.910					50B13SS	B	5/8	1-5/16	1-7/8	1	0.8
14	3.110					50B14SS	B	5/8	1-7/16	2-1/8	1	1.0
15	3.320					50B15SS	B	5/8	1-1/2	2-3/8	1	1.3
16	3.520					50B16SS	B	5/8	1-3/4	2-1/2	1	1.5
17	3.720					50B17SS	B	5/8	1-7/8	2-11/16	1	1.8
18	3.920					50B18SS	B	5/8	1-7/8	2-7/8	1	2.0
19	4.120					50B19SS	B	5/8	1-3/4	2-1/2	1	2.3
20	4.320					50B20SS	B	3/4	1-3/4	2-1/2	1	2.5
21	4.520	50A21SS	A	23/32	1.4	50B21SS	B	3/4	2	3	1	2.7
22	4.720	50A22SS	A	23/32	1.6	50B22SS	B	3/4	2	3	1	3.3
23	4.920	50A23SS	A	23/32	1.7	50B23SS	B	3/4	2	3	1	3.8
24	5.120	50A24SS	A	23/32	1.8	50B24SS	B	3/4	2	3	1-1/4	4.1
25	5.320	50A25SS	A	23/32	1.9	50B25SS	B	3/4	2	3	1-1/4	4.3
26	5.520	50A26SS	A	23/32	2.1	50B26SS	B	3/4	2	3	1-1/4	4.6
28	5.920	50A28SS	A	23/32	2.5	50B28SS	B	3/4	2	3	1-1/4	5.0
30	6.320	50A30SS	A	23/32	2.7	50B30SS	B	3/4	2-1/4	3-1/4	1-1/4	5.2
35	7.320	50A35SS	A	23/32	3.7	50B35SS	B	3/4	2-1/4	3-1/4	1-1/4	6.5
40	8.320	50A40SS	A	23/32	4.7	50B40SS	B	3/4	2-1/4	3-1/4	1-1/4	7.8
45	9.310	50A45SS	A	23/32	6.0	50B45SS	B	3/4	2-1/2	3-3/4	1-1/4	8.5
60	12.300	50A60SS	A	15/16	10.8	50B60SS	B	1	2-1/2	3-3/4	1-1/4	14.0

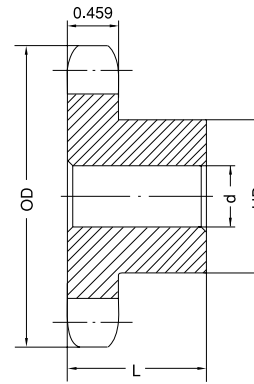
* Hub has recessed groove allowing for chain clearance. For dimensions, please refer to page 18.
Maximum bores shown, accommodate standard keyway with setscrew positioned over keyway.

STAINLESS STEEL No. 60

3/4" Pitch



Type A



Type B

Single Type A & B — Stainless Steel

No. of Teeth	OD	Part No.	Type	d	App. Wt. (Lbs.)	Part No.	Type	d		HD	L	App. Wt. (Lbs.)
								Min.	Max.			
12	3.250					60B12SS	B	3/4	1-3/8	2-3/8*	1-1/4	1.5
13	3.490					60B13SS	B	3/4	1-1/2	2-11/32	1-1/4	1.8
14	3.740					60B14SS	B	3/4	1-3/4	2-9/16	1-1/4	2.0
15	3.980					60B15SS	B	3/4	1-7/8	2-7/8	1-1/4	2.4
16	4.220					60B16SS	B	3/4	2	3-1/16	1-1/4	2.8
17	4.460					60B17SS	B	3/4	2-1/4	3-1/4	1-1/4	3.3
18	4.700					60B18SS	B	3/4	2-3/8	3-1/2	1-1/4	3.8
19	4.950					60B19SS	B	3/4	2-3/8	3-1/2	1-1/4	4.0
20	5.190					60B20SS	B	3/4	2-5/8	3-7/8	1-1/4	4.6
21	5.430	60A21SS	A	3/4	2.5	60B21SS	B	3/4	2-3/4	4	1-1/4	5.0
22	5.670	60A22SS	A	3/4	2.7	60B22SS	B	3/4	2-3/4	4	1-1/4	5.3
23	5.910	60A23SS	A	3/4	3.0	60B23SS	B	3/4	2-3/4	4	1-1/4	5.7
24	6.150	60A24SS	A	23/32	3.1	60B24SS	B	3/4	2-3/4	4	1-1/4	5.9
25	6.390	60A25SS	A	23/32	3.3	60B25SS	B	3/4	2-3/4	4	1-1/4	6.1
26	6.630	60A26SS	A	23/32	3.8	60B26SS	B	3/4	2-3/4	4	1-1/4	6.3
28	7.110	60A28SS	A	23/32	4.2	60B28SS	B	3/4	2-3/4	4	1-1/4	6.7
30	7.590	60A30SS	A	23/32	4.7	60B30SS	B	3/4	2-3/4	4	1-1/4	7.0
35	8.780	60A35SS	A	15/16	6.9	60B35SS	B	1	2-3/4	4	1-1/4	9.0
40	9.980	60A40SS	A	15/16	8.3	60B40SS	B	1	2-3/4	4-1/4	1-1/4	11.7
45	11.180	60A45SS	A	15/16	10.6	60B45SS	B	1	2-3/4	4-1/4	1-1/4	14.5
60	14.760	60A60SS	A	1-1/4	18.0	60B60SS	B	1-1/4	2-3/4	4-1/4	1-3/4	25.0

* Hub has recessed groove allowing for chain clearance. For dimension, please refer to page 22.
Maximum bores shown, accommodate standard keyway with setscrew positioned over keyway.