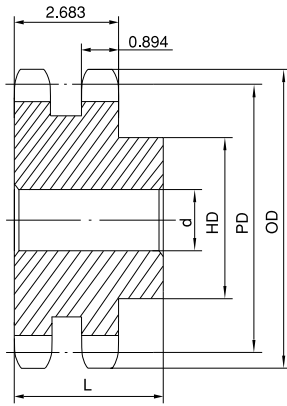
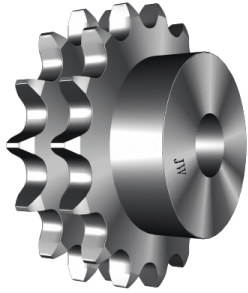
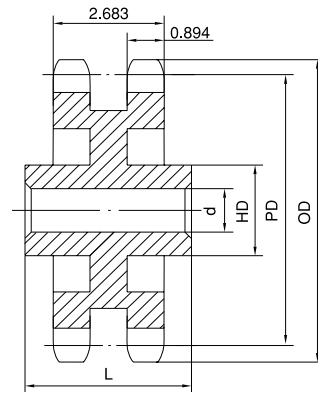


No. 120 STOCK SPROCKETS

1-1/2" Pitch



Type B



Type C

Double Type B & C

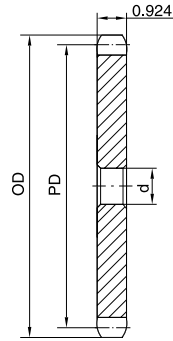
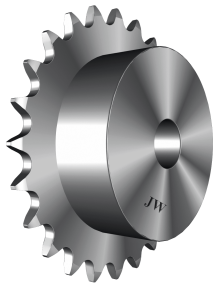
No. of Teeth	Part No.	OD	PD	Type	d		HD	L	App. Wt. (Lbs.)
					Min.	Max.			
11	D120B11H	6.010	5.325	B	1-1/2	2-3/8	3-9/16	3-3/4	13.6
12	D120B12H	6.500	5.796	B	1-1/2	2-3/4	4-1/16	3-3/4	17.3
13	D120B13H	6.990	6.269	B	1-1/2	3	4-1/2	3-3/4	21.1
14	D120B14H	7.470	6.741	B	1-1/2	3-5/16	5	3-3/4	25.6
15	D120B15H	7.960	7.215	B	1-1/2	3-1/2	5-1/4	3-3/4	29.9
16	D120B16H	8.440	7.689	B	1-1/2	3-1/2	5-1/4	3-3/4	33.8
17	D120B17H	8.920	8.163	B	1-1/2	3-1/2	5-1/4	3-3/4	36.9
18	D120B18H	9.410	8.639	B	1-1/2	3-1/2	5-1/4	3-3/4	41.9
19	D120B19H	9.890	9.114	B	1-1/2	3-1/2	5-1/4	3-3/4	46.5
20	D120B20H	10.370	9.588	B	1-1/2	3-1/2	5-1/2	3-3/4	50.2
21	D120B21H	10.850	10.065	B	1-1/2	3-1/2	5-1/2	3-3/4	55.6
22	D120B22	11.330	10.541	B	1-1/2	3-13/16	5-3/4	4	64.0
23	D120B23	11.810	11.016	B	1-1/2	4-1/2	6-1/2	4	75.0
24	D120B24	12.290	11.492	B	1-1/2	4-1/2	6-1/2	4	79.0
25	D120B25	12.770	11.969	B	1-1/2	4-1/2	6-1/2	4	84.0
26	D120B26	13.250	12.444	B	1-1/2	4-1/2	6-1/2	4	90.0
30	D120B30	15.170	14.351	B	1-1/2	4-1/2	6-1/2	4	119.0
35	D120C35	17.570	16.734	C	1-1/2	5-3/8	7-1/2	6	148.0
45	D120C45	22.350	21.504	C	1-1/2	5-3/8	7-1/2	6	188.0
60	D120C60	29.520	28.661	C	1-1/2	6-3/8	9-1/2	6-1/4	307.0

H - Denotes hardened teeth.

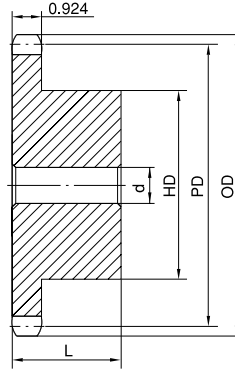
Maximum bores shown, accommodate standard keyway with setscrew positioned over keyway.

STOCK SPROCKETS No. 140

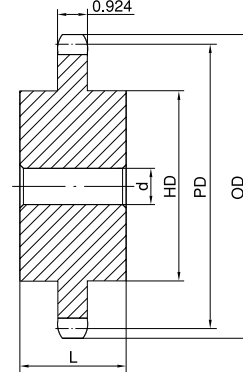
1-3/4" Pitch



Type A



Type B



Type C

Single Type A, B & C

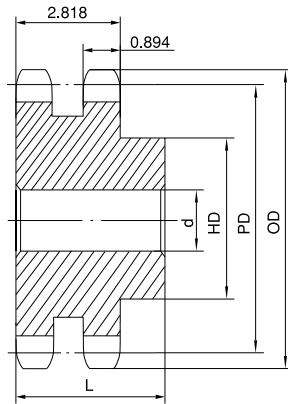
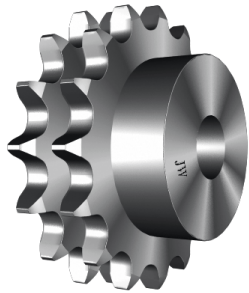
No. of Teeth	OD	PD	Type A			Type B					Type C						
			Part No.	d	App. Wt. (Lbs.)	Part No.	d		HD	L	App. Wt. (Lbs.)	Part No.	d		HD	L	App. Wt. (Lbs.)
							Min.	Max.					Min.	Max.			
11	7.010	6.213	140A11H	1-1/2	6.7	140B11H	1-1/2	2-3/4	4-1/4	2-1/4	11.3						
12	7.580	6.762	140A12H	1-1/2	8.0	140B12H	1-1/2	3	4-1/2	2-1/4	13.2						
13	8.150	7.313	140A13H	1-1/2	9.5	140B13H	1-1/2	3-3/4	5-1/2	2-3/8	18.9						
14	8.720	7.865	140A14H	1-1/2	11.0	140B14H	1-1/2	3-3/4	5-1/2	2-3/8	20.4						
15	9.280	8.418	140A15H	1-1/2	12.7	140B15H	1-1/2	4-1/4	6-1/4	2-3/8	25.1						
16	9.850	8.971	140A16H	1-1/2	14.5	140B16H	1-1/2	4-1/4	6-1/4	2-1/2	27.9						
17	10.410	9.524	140A17H	1-1/2	16.3	140B17H	1-1/2	4-1/4	6-1/4	2-1/2	29.8						
18	10.980	10.078	140A18H	1-1/2	18.0	140B18H	1-1/2	4-1/4	6-1/4	2-1/2	32.0						
19	11.540	10.633	140A19H	1-1/2	21.0	140B19H	1-1/2	4-1/4	6-1/4	2-1/2	34.1						
20	12.100	11.186	140A20H	1-1/2	23.0	140B20H	1-1/2	4-1/4	6-1/4	2-1/2	36.0						
21	12.660	11.743	140A21H	1-1/2	25.0	140B21H	1-1/2	4-1/4	6-1/4	2-1/2	38.7						
22	13.220	12.297	140A22	1-1/2	28.0	140B22	1-1/2	4-1/4	6-1/4	2-1/2	40.6						
23	13.780	12.852	140A23	1-1/2	30.0	140B23	1-1/2	4-1/4	6-1/4	2-1/2	42.1						
24	14.340	13.407	140A24	1-1/2	33.0	140B24	1-1/2	4-1/4	6-1/4	2-1/2	46.2						
25	14.900	13.963	140A25	1-1/2	34.0	140B25	1-1/2	4-1/4	6-1/4	2-1/2	47.8						
26	15.460	14.518	140A26	1-1/2	39.0	140B26	1-1/2	4-1/4	6-1/4	3	57.2						
27	16.020	15.075	140A27	1-1/2	41.0	140B27	1-1/2	4-1/4	6-1/4	3	58.5						
28	16.580	15.629	140A28	1-1/2	45.0	140B28	1-1/2	4-1/4	6-1/4	3	62.2						
30	17.700	16.742	140A30	1-1/2	52.0	140B30	1-1/2	4-1/4	6-1/4	3	69.8						
31	18.260	17.297	140A31	1-1/2	56.0	140B31	1-1/2	4-1/4	6-1/4	3	73.0						
32	18.820	17.854	140A32	1-1/2	60.0	140B32	1-1/2	4-1/4	6-1/4	3	76.3						
35	20.490	19.523	140A35	1-1/2	73.0							140C35	1-1/2	5-1/4	7	4	108.0
36	21.050	20.080	140A36	1-1/2	77.0							140C36	1-1/2	5-1/4	7	4	110.0
40	23.290	22.306	140A40	1-1/2	93.0							140C40	1-1/2	5-1/4	7	4	121.0
45	26.080	25.088	140A45	1-1/2	131.0							140C45	1-1/2	5-1/4	7	4	142.0
48	27.750	26.758	140A48	1-1/2	134.0							140C48	1-1/2	5-1/4	7	4	150.0
54	31.100	30.097	140A54	1-1/2	173.0							140C54	1-1/2	5-1/4	7	4	177.0
60	34.440	33.437	140A60	1-1/2	219.0							140C60	1-1/2	5-1/4	7	5	220.0
70	40.020	39.006	140A70	1-1/2	292.0							140C70	1-1/2	5-3/8	7-1/2	5	262.0
80	45.590	44.574	140A80	1-1/2	402.0							140C80	1-1/2	5-3/8	7-1/2	5	331.0

H - Denotes hardened teeth.

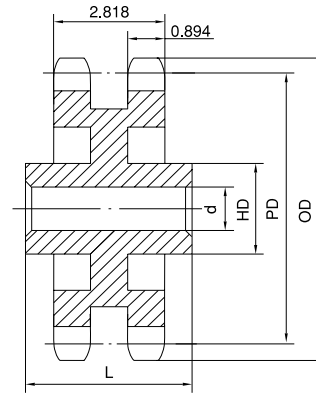
Maximum bores shown, accommodate standard keyway with setscrew positioned over keyway.

No. 140 STOCK SPROCKETS

1-3/4" Pitch



Type B



Type C

Double Type B & C

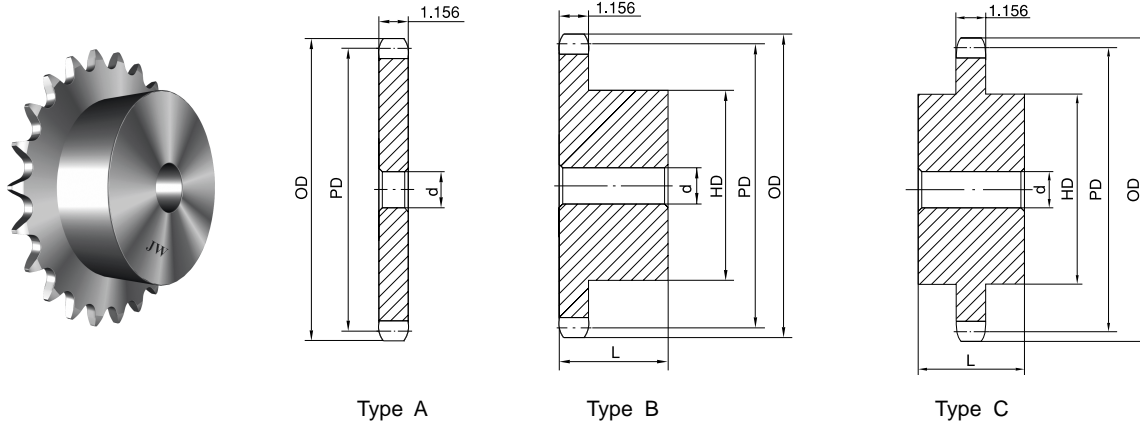
No. of Teeth	Part No.	OD	PD	Type	d		HD	L	App. Wt. (Lbs.)
					Min.	Max.			
13	D140B13H	8.150	7.313	B	1-5/8	3-5/16	5	3-3/4	29.0
14	D140B14H	8.720	7.865	B	1-5/8	3-3/4	5-1/2	3-3/4	34.8
15	D140B15H	9.280	8.418	B	1-5/8	4-1/2	6-1/2	3-3/4	42.5
16	D140B16H	9.850	8.971	B	1-5/8	5-1/4	7	4	48.1
17	D140B17H	10.410	9.524	B	1-5/8	5-1/4	7	4	57.5
18	D140B18H	10.980	10.078	B	1-3/4	5-1/4	7	4	65.6
19	D140B19H	11.540	10.633	B	1-3/4	5-1/4	7	4	72.0
20	D140B20H	12.100	11.186	B	1-3/4	5-1/4	7	4	76.0
21	D140B21H	12.660	11.743	B	1-3/4	5-1/4	7	4	82.0
22	D140B22	13.220	12.297	B	1-3/4	5-1/4	7	4	94.0
23	D140B23	13.780	12.852	B	1-3/4	5-1/4	7	4	100.0
24	D140B24	14.340	13.407	B	1-3/4	5-1/4	7	4	104.0
25	D140B25	14.900	13.963	B	1-3/4	5-1/4	7	4	120.0
26	D140B26	15.460	14.518	B	1-3/4	5-1/4	7	4	128.0
35	D140C35	20.490	19.523	C	1-1/2	5-3/8	7-1/2	6	180.0
45	D140C45	26.080	25.088	C	1-1/2	5-3/8	7-1/2	6	232.0
60	D140C60	34.440	33.437	C	1-1/2	6-3/8	9-1/2	6-1/4	372.0

H - Denotes hardened teeth.

Maximum bores shown, accommodate standard keyway with setscrew positioned over keyway.

STOCK SPROCKETS No. 160

2" Pitch



Single Type A, B & C

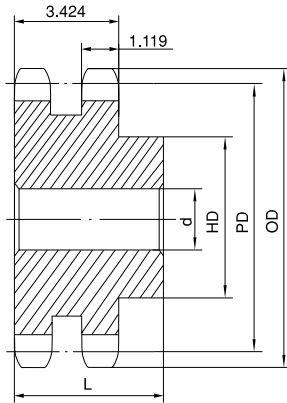
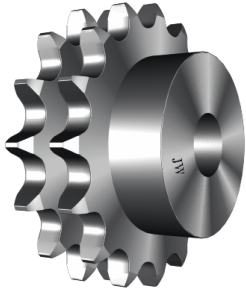
No. of Teeth	OD	PD	Type A			Type B					Type C						
			Part No.	d	App. Wt. (Lbs.)	Part No.	d		HD	L	App. Wt. (Lbs.)	Part No.	d		HD	L	App. Wt. (Lbs.)
							Min.	Max.					Min.	Max.			
8	6.030	5.226	160A8H	1-1/2	5.8	160B8H	1-1/2	1-7/8	3-1/4	2-1/4	8.0						
9	6.700	5.848	160A9H	1-1/2	7.4	160B9H	1-1/2	2-1/8	3-5/8	2-1/4	10.0						
10	7.360	6.472	160A10H	1-1/2	9.2	160B10H	1-1/2	2-3/4	4-1/8	2-1/4	12.0						
11	8.010	7.100	160A11H	1-1/2	11.1	160B11H	1-1/2	3-1/4	4-3/4	2-1/2	17.0	160C11	1-1/2	3-1/4	4-1/2	4-1/8	21.0
12	8.660	7.728	160A12H	1-1/2	13.3	160B12H	1-1/2	3-3/4	5-1/2	2-1/2	21.0	160C12	1-1/2	3-3/4	5-1/2	4-1/8	26.0
13	9.310	8.358	160A13H	1-1/2	16.0	160B13H	1-1/2	4	6	2-3/4	28.0						
14	9.960	8.988	160A14H	1-1/2	17.0	160B14H	1-1/2	4-1/2	6-1/2	2-3/4	32.0						
15	10.610	9.620	160A15H	1-1/2	21.0	160B15H	1-1/2	5-1/4	7	2-3/4	37.0						
16	11.260	10.252	160A16H	1-1/2	24.0	160B16H	1-1/2	5-1/4	7	2-3/4	41.0						
17	11.900	10.844	160A17H	1-1/2	27.0	160B17H	1-1/2	5-1/4	7	2-3/4	45.0						
18	12.540	11.518	160A18H	1-1/2	30.0	160B18H	1-1/2	5-1/4	7	2-3/4	48.0						
19	13.190	12.152	160A19H	1-1/2	34.0	160B19H	1-1/2	5-1/4	7	2-3/4	52.0						
20	13.830	12.784	160A20H	1-1/2	38.0	160B20H	1-1/2	5-1/4	7	2-3/4	56.0						
21	14.470	13.420	160A21	1-1/2	42.0	160B21	1-1/2	5-1/4	7	2-3/4	59.0						
22	15.110	14.054	160A22	1-1/2	46.0	160B22	1-1/2	5-1/4	7	2-3/4	65.0						
23	15.750	14.688	160A23	1-1/2	50.0	160B23	1-1/2	5-1/4	7	2-3/4	68.0						
24	16.390	15.322	160A24	1-1/2	56.0	160B24	1-1/2	5-1/4	7	3	77.0						
25	17.030	15.958	160A25	1-1/2	61.0	160B25	1-1/2	5-1/4	7	3	81.0						
26	17.670	16.592	160A26	1-1/2	65.0	160B26	1-1/2	5-1/4	7	3	86.0						
27	18.310	17.228	160A27	1-1/2	71.0	160B27	1-1/2	5-1/4	7	3	91.0						
28	18.950	17.862	160A28	1-1/2	77.0	160B28	1-1/2	5-1/4	7	3	98.0						
30	20.230	19.134	160A30	1-1/2	90.0	160B30	1-1/2	5-1/4	7	3	108.0						
35	23.420	22.312	160A35	1-1/2	121.0							160C35	1-1/2	5-1/2	8	4-1/2	154.0
40	26.610	25.492	160A40	1-1/2	138.0							160C40	1-1/2	5-1/2	8	4-1/2	196.0
45	29.800	28.672	160A45	1-1/2	204.0							160C45	1-1/2	5-1/2	8	5	234.0
54	35.540	34.396	160A54	1-1/2	294.0							160C54	1-1/2	5-1/2	8	5	276.0
60	39.360	38.214	160A60	1-1/2	366.0							160C60	1-1/2	5-1/2	8	5	329.0
70	45.730	44.578	160A70	1-1/2	507.0							160C70	1-1/2	5-1/2	8	5	446.0
80	52.100	50.942	160A80	1-1/2	656.0							160C80	1-1/2	5-1/2	8	5	612.0

H - Denotes hardened teeth.

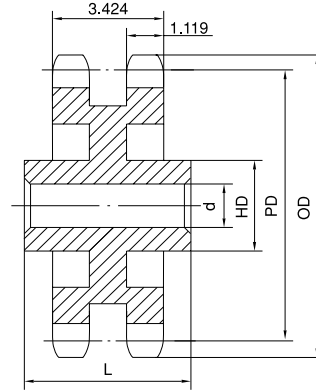
Maximum bores shown, accommodate standard keyway with setscrew positioned over keyway.

No. 160 STOCK SPROCKETS

2" Pitch



Type B



Type C

Double Type B & C

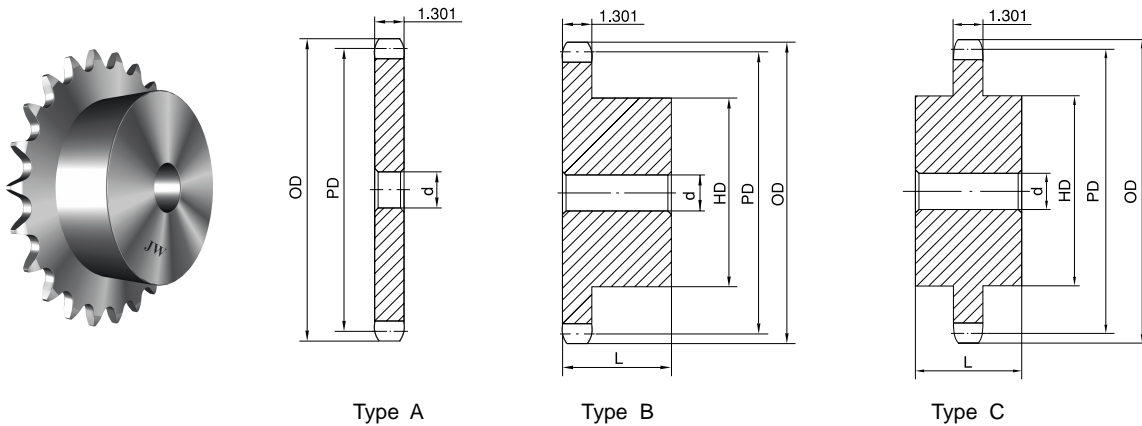
No. of Teeth	Part No.	OD	PD	Type	d		HD	L	App. Wt. (Lbs.)
					Min.	Max.			
13	D160B13	9.310	8.358	B	2	4	6	4-3/4	48.0
14	D160B14	9.960	8.988	B	2	4-3/4	6-3/4	4-3/4	58.0
15	D160B15	10.610	9.620	B	2	5-1/4	7	4-3/4	68.0
16	D160B16	11.260	10.252	B	2	5-1/4	7	4-3/4	75.0
17	D160B17	11.900	10.844	B	2	5-1/4	7	4-3/4	91.0
18	D160B18	12.540	11.518	B	2	5-1/4	7	4-3/4	96.0
19	D160B19	13.190	12.152	B	2	5-1/4	7	4-3/4	107.0
20	D160B20	13.830	12.784	B	2	5-1/4	7	4-3/4	119.0
21	D160B21	14.470	13.420	B	2	5-3/8	7-1/2	4-3/4	130.0
22	D160B22	15.110	14.054	B	2	5-3/8	7-1/2	4-3/4	141.0
23	D160B23	15.750	14.688	B	2	5-3/8	7-1/2	4-3/4	157.0
24	D160B24	16.390	15.322	B	2	5-3/8	7-1/2	4-3/4	171.0
25	D160B25	17.030	15.958	B	2	5-3/8	7-1/2	4-3/4	187.0
26	D160B26	17.670	16.592	B	2	5-3/8	7-1/2	4-3/4	201.0
35	D160C35	23.420	22.312	C	1-1/2	6-3/4	9-1/2	6-5/8	306.0
45	D160C45	29.800	28.672	C	1-1/2	7	10	7-1/8	431.0
60	D160C60	39.360	38.214	C	1-1/2	7	10	7-1/8	564.0

H - Denotes hardened teeth.

Maximum bores shown, accommodate standard keyway with setscrew positioned over keyway.

STOCK SPROCKETS **No. 180**

2-1/4" Pitch



Single Type A, B & C

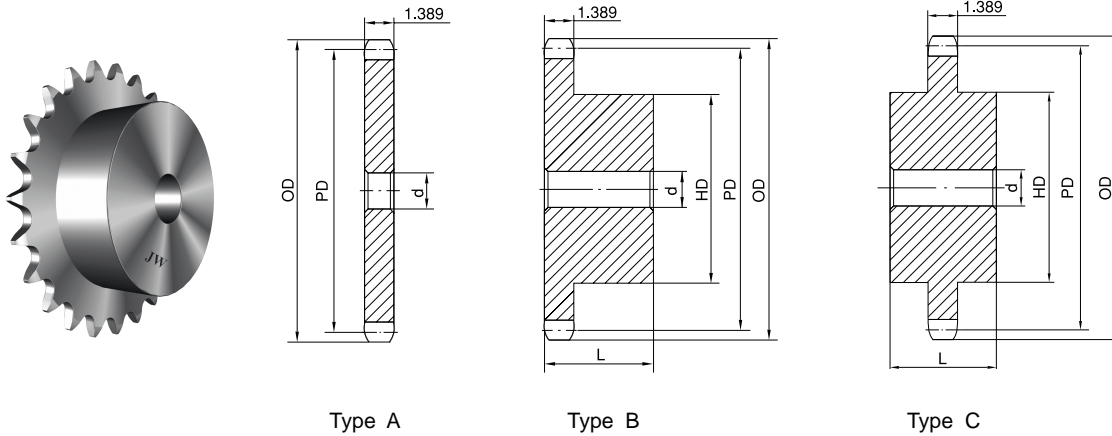
No. of Teeth	OD	PD	Part No.	Type	d	App. Wt. (Lbs.)	Part No.	Type	d		HD	L	App. Wt. (Lbs.)
									Min.	Max.			
11	9.010	7.986	180A11H	A	1-1/2	16.0	180B11H	B	1-1/2	3-5/8	5-1/2	3	29.0
12	9.750	8.693	180A12H	A	1-1/2	19.0	180B12H	B	1-1/2	4	6	3	32.0
13	10.480	9.402	180A13H	A	1-1/2	22.0	180B13H	B	1-1/2	4-5/8	6-3/4	3-1/8	40.0
14	11.210	10.112	180A14H	A	1-1/2	26.0	180B14H	B	1-1/2	5-1/4	7	3-1/8	44.0
15	11.930	10.822	180A15H	A	1-1/2	30.0	180B15H	B	1-1/2	5-1/4	7	3-1/8	48.0
16	12.660	11.533	180A16	A	1-1/2	34.0	180B16	B	1-1/2	5-1/4	7	3-1/8	52.0
17	13.390	12.245	180A17	A	1-1/2	38.0	180B17	B	1-1/2	5-1/4	7	3-1/8	58.0
18	14.110	12.957	180A18	A	1-1/2	43.0	180B18	B	1-1/2	5-1/4	7	3-1/8	63.0
19	14.830	13.670	180A19	A	1-1/2	48.0	180B19	B	1-1/2	5-3/8	7-1/2	3-3/8	74.0
20	15.560	14.383	180A20	A	1-1/2	53.0	180B20	B	1-1/2	5-3/8	7-1/2	3-3/8	81.0
21	16.280	15.096	180A21	A	1-1/2	57.0	180B21	B	1-1/2	5-3/8	7-1/2	3-3/8	83.0
22	17.000	15.810	180A22	A	1-1/2	62.0	180B22	B	1-1/2	5-3/8	7-1/2	3-3/8	92.0
23	17.720	16.524	180A23	A	1-1/2	69.0	180B23	B	1-1/2	5-3/8	7-1/2	3-3/8	99.0
24	18.440	17.238	180A24	A	1-1/2	77.0	180B24	B	1-1/2	5-3/8	7-1/2	3-3/8	105.0
25	19.160	17.952	180A25	A	1-1/2	84.0	180B25	B	1-1/2	5-3/8	7-1/2	3-3/8	113.0
28	21.320	20.096	180A28	A	1-1/2	104.0	180B28	B	1-1/2	5-1/2	8	3-1/2	135.0
30	22.760	21.525	180A30	A	1-1/2	120.0	180C30	C	1-1/2	5-3/4	8-1/2	4-3/8	180.0
35	26.350	25.101	180A35	A	1-1/2	172.0	180C35	C	1-1/2	5-3/4	8-1/2	4-3/8	222.0
40	29.940	28.677	180A40	A	1-1/2	229.0	180C40	C	1-1/2	5-3/4	8-1/2	4-3/8	270.0
45	33.530	32.255	180A45	A	1-1/2	284.0	180C45	C	1-1/2	6	9	5	315.0
54	39.980	38.696	180A54	A	1-1/2	420.0	180C54	C	1-1/2	6	9	5	477.0
60	44.280	42.991	180A60	A	1-1/2	505.0	180C60	C	1-1/2	6-1/2	9-1/2	5-3/8	489.0

H - Denotes hardened teeth.

Maximum bores shown, accommodate standard keyway with setscrew positioned over keyway.

No. 200 STOCK SPROCKETS

2-1/2" Pitch



Type A

Type B

Type C

Single Type A, B & C

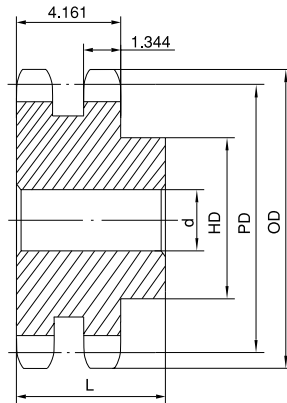
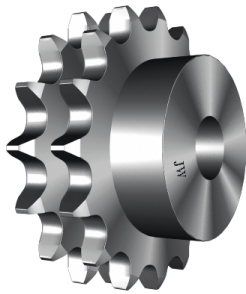
No. of Teeth	OD	PD	Part No.	Type	d	App. Wt. (Lbs.)	Part No.	Type	d		HD	L	App. Wt. (Lbs.)
									Min.	Max.			
10	9.200	8.090	200A10H	A	1-1/2	18.0	200B10H	B	1-1/2	3-3/4	5-1/2	3	26.0
11	10.020	8.875	200A11H	A	1-1/2	21.0	200B11H	B	1-1/2	4	6	3	33.0
12	10.830	9.660	200A12H	A	1-1/2	25.0	200B12H	B	1-1/2	4-1/2	6-1/2	3	37.0
13	11.640	10.447	200A13H	A	1-1/2	30.0	200B13H	B	1-1/2	5-1/4	7	3	46.0
14	12.460	11.235	200A14H	A	1-1/2	34.0	200B14H	B	1-1/2	5-3/8	7-1/2	3-1/2	59.0
15	13.260	12.025	200A15H	A	1-1/2	40.0	200B15H	B	1-1/2	5-3/8	7-1/2	3-1/2	64.0
16	14.070	12.815	200A16	A	1-1/2	46.0	200B16	B	1-1/2	5-3/8	7-1/2	3-1/2	72.0
17	14.870	13.605	200A17	A	1-1/2	51.0	200B17	B	1-1/2	5-3/8	7-1/2	3-1/2	76.0
18	15.680	14.397	200A18	A	1-1/2	57.0	200B18	B	1-1/2	5-3/8	7-1/2	3-1/2	84.0
19	16.480	15.190	200A19	A	1-1/2	63.0	200B19	B	1-1/2	5-3/8	7-1/2	3-1/2	91.0
20	17.290	15.980	200A20	A	1-1/2	70.0	200B20	B	1-1/2	5-3/8	7-1/2	3-1/2	98.0
21	18.090	16.775	200A21	A	1-1/2	78.0	200B21	B	1-1/2	5-3/8	7-1/2	3-1/2	106.0
22	18.890	17.567	200A22	A	1-1/2	85.0	200B22	B	1-1/2	5-3/4	8-1/2	4	131.0
23	19.690	18.360	200A23	A	1-1/2	93.0	200B23	B	1-1/2	5-3/4	8-1/2	4	136.0
24	20.490	19.153	200A24	A	1-1/2	102.0	200B24	B	1-1/2	5-3/4	8-1/2	4	142.0
25	21.290	19.947	200A25	A	1-1/2	111.0	200B25	B	1-1/2	5-3/4	8-1/2	4	153.0
26	22.090	20.740	200A26	A	1-1/2	124.0	200C26	C	1-1/2	5-3/4	8-1/2	4-1/2	178.0
28	23.690	22.327	200A28	A	1-1/2	144.0	200C28	C	1-1/2	5-3/4	8-1/2	4-1/2	195.0
30	25.290	23.917	200A30	A	1-1/2	167.0	200C30	C	1-1/2	5-3/4	8-1/2	4-1/2	212.0
32	26.880	25.505	200A32	A	1-1/2	195.0	200C32	C	1-1/2	5-3/4	8-1/2	4-1/2	220.0
35	29.280	27.890	200A35	A	1-1/2	227.0	200C35	C	1-1/2	5-3/4	8-1/2	4-1/2	254.0
40	33.270	31.865	200A40	A	1-1/2	301.0	200C40	C	1-1/2	6	9	5	320.0
45	37.250	35.840	200A45	A	1-1/2	390.0	200C45	C	1-1/2	6	9	5	364.0
54	44.420	42.995	200A54	A	1-1/2	555.0	200C54	C	1-1/2	6-1/2	9-1/2	5-1/2	512.0
60	49.200	47.768	200A60	A	1-1/2	692.0	200C60	C	1-1/2	6-1/2	9-1/2	5-1/2	654.0

H - Denotes hardened teeth.

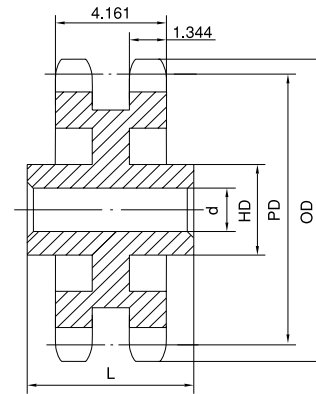
Maximum bores shown, accommodate standard keyway with setscrew positioned over keyway.

STOCK SPROCKETS **No. 200**

2-1/2" Pitch



Type B



Type C

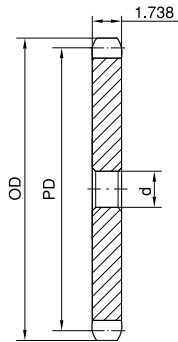
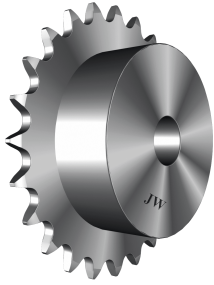
Double Type B & C

No. of Teeth	Part No.	OD	PD	Type	d		HD	L	App. Wt. (Lbs.)
					Min.	Max.			
11	D200B11	10.020	8.875	B	2	3-3/4	5-1/2	5-7/8	57.0
12	D200B12	10.830	9.660	B	2	4-1/2	6-1/2	6-1/4	80.0
13	D200B13	11.640	10.447	B	2	5-1/4	7	6-3/8	96.0
14	D200B14	12.460	11.235	B	2	5-1/2	8	6-3/8	119.0
15	D200B15	13.260	12.025	B	2	5-3/4	8-1/2	6-3/8	138.0
16	D200B16	14.070	12.815	B	2	5-3/4	8-1/2	6-5/8	161.0
17	D200B17	14.870	13.605	B	2	5-3/4	8-1/2	6-5/8	178.0
18	D200B18	15.680	14.397	B	2	5-3/4	8-1/2	6-5/8	196.0
19	D200B19	16.480	15.190	B	2	5-3/4	8-1/2	6-5/8	217.0
20	D200B20	17.290	15.980	B	2	5-3/4	8-1/2	6-5/8	236.0
21	D200B21	18.090	16.775	B	2	5-3/4	8-1/2	6-5/8	250.0
22	D200B22	18.890	17.567	B	2	5-3/4	8-1/2	6-5/8	284.0
23	D200B23	19.690	18.360	B	2	5-3/4	8-1/2	6-5/8	308.0
24	D200B24	20.490	19.153	B	2	5-3/4	8-1/2	6-5/8	330.0
25	D200B25	21.290	19.947	B	2	5-3/4	8-1/2	6-5/8	358.0
26	D200B26	22.090	20.740	B	2	5-3/4	8-1/2	6-5/8	386.0
45	D200C45	37.250	35.840	C	1-1/2	7	10	8-1/2	665.0
60	D200C60	49.200	47.768	C	1-1/2	7	10	9	972.0

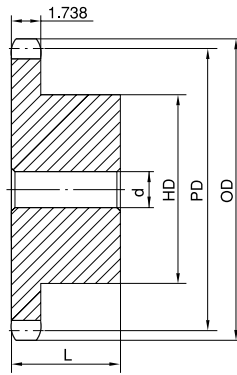
Maximum bores shown, accommodate standard keyway with setscrew positioned over keyway.

No. 240 STOCK SPROCKETS

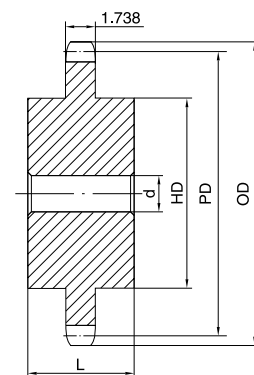
3" Pitch



Type A



Type B



Type C

Single Type A, B & C

No. of Teeth	OD	PD	Part No.	Type	d	App. Wt. (Lbs.)	Part No.	Type	d		HD	L	App. Wt. (Lbs.)
									Min.	Max.			
10	11.030	9.708	240A10	A	1-1/2	32.0	240B10	B	1-1/2	4-1/2	6-1/2	3-3/8	49.0
11	12.020	10.649	240A11	A	1-1/2	39.0	240B11	B	1-1/2	4-3/4	7	3-7/8	66.0
12	13.000	11.591	240A12	A	1-1/2	46.0	240B12	B	1-1/2	5-3/8	7-1/2	3-7/8	72.0
13	13.970	12.536	240A13	A	1-1/2	54.0	240B13	B	1-1/2	5-3/8	7-1/2	3-7/8	81.0
14	14.940	13.482	240A14	A	1-1/2	62.0	240B14	B	1-1/2	5-3/8	7-1/2	3-7/8	88.0
15	15.910	14.429	240A15	A	1-1/2	72.0	240B15	B	1-1/2	5-3/8	7-1/2	3-7/8	98.0
16	16.880	15.377	240A16	A	1-1/2	82.0	240B16	B	1-1/2	5-1/2	8	4-1/8	120.0
17	17.850	16.327	240A17	A	1-1/2	93.0	240B17	B	1-1/2	5-1/2	8	4-1/8	137.0
18	18.810	17.276	240A18	A	1-1/2	103.0	240B18	B	1-1/2	5-1/2	8	4-1/8	142.0
19	19.780	18.227	240A19	A	1-1/2	115.0	240B19	B	1-1/2	5-1/2	8	4-1/8	154.0
20	20.740	19.177	240A20	A	1-1/2	128.0	240B20	B	1-1/2	5-1/2	8	4-1/8	169.0
21	21.710	20.129	240A21	A	1-1/2	140.0	240B21	B	1-1/2	5-1/2	8	4-1/8	186.0
25	25.550	23.936	240A25	A	1-1/2	200.0	240B25	B	1-1/2	5-1/2	8	4-1/8	254.0
30	30.340	28.700	240A30	A	1-1/2	310.0	240C30	C	1-1/2	6	9	6-1/4	398.0
35	35.130	33.467	240A35	A	1-1/2	416.0	240C35	C	1-1/2	6	9	6-1/4	527.0
40	39.920	38.237	240A40	A	1-1/2	548.0	240C40	C	1-1/2	7	10	6-3/4	672.0
45	44.700	43.007	240A45	A	1-1/2	702.0	240C45	C	1-1/2	7	10	6-3/4	850.0
54	53.310	51.595	240A54	A	1-1/2	1022.0	240C54	C	1-1/2	7	10	6-3/4	1148.0
60	59.040	57.322	240A60	A	1-1/2	1268.0	240C60	C	1-1/2	7	10	6-3/4	1419.0

Maximum bores shown, accommodate standard keyway with setscrew positioned over keyway.