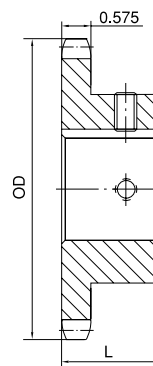


No. 80 FINISHED BORE

1" Pitch

Single Type BS

No. of Teeth	Part No.	OD	L	App. Wt. (Lbs.)	Finished Bore (Includes Keyway and 2 Setscrews)
9	80BS9H	3.350	1-5/8	1.6	1 1-1/8 1-3/16 1-1/4
10	80BS10H	3.680	1-5/8	1.7	1 1-1/8 1-3/16 1-1/4
11	80BS11H	4.010	1-5/8	1.8	1 1-1/8 1-3/16 1-1/4 1-3/8 1-7/16 1-1/2 1-5/8
12	80BS12H	4.330	1-5/8	3.0	1 1-1/8 1-3/16 1-1/4 1-3/8 1-7/16 1-1/2 1-5/8 1-3/4
13	80BS13H	4.660	1-1/2	3.5	1 1-1/8 1-3/16 1-1/4 1-3/8 1-7/16 1-1/2 1-5/8 1-3/4 1-7/8 1-15/16 2
14	80BS14H	4.980	1-1/2	4.1	1 1-1/8 1-3/16 1-1/4 1-3/8 1-7/16 1-1/2 1-5/8 1-3/4 1-7/8 1-15/16 2
15	80BS15H	5.300	1-1/2	5.2	1 1-1/8 1-3/16 1-1/4 1-3/8 1-7/16 1-1/2 1-5/8 1-3/4 1-7/8 1-15/16 2
16	80BS16H	5.630	1-1/2	5.5	1 1-3/16 1-1/4 1-3/8 1-7/16 1-1/2 1-5/8 1-3/4 1-15/16 2 2-3/16
17	80BS17H	5.950	1-1/2	6.0	1 1-3/16 1-1/4 1-3/8 1-7/16 1-1/2 1-5/8 1-3/4 1-15/16 2 2-3/16 2-7/16
18	80BS18H	6.270	1-1/2	6.5	1 1-3/16 1-1/4 1-3/8 1-7/16 1-1/2 1-5/8 1-3/4 1-15/16 2 2-3/16 2-7/16
19	80BS19H	6.590	1-1/2	7.0	1 1-3/16 1-1/4 1-3/8 1-7/16 1-1/2 1-5/8 1-3/4 1-15/16 2 2-3/16 2-7/16
20	80BS20H	6.910	1-1/2	8.0	1 1-3/16 1-1/4 1-3/8 1-7/16 1-1/2 1-5/8 1-3/4 1-15/16 2 2-3/16 2-7/16
21	80BS21H	7.240	1-3/4	8.9	1 1-3/16 1-1/4 1-3/8 1-7/16 1-1/2 1-5/8 1-3/4 1-15/16 2 2-3/16 2-7/16
22	80BS22H	7.560	1-3/4	9.5	1 1-3/16 1-1/4 1-3/8 1-7/16 1-1/2 1-5/8 1-3/4 1-15/16 2 2-3/16 2-7/16
23	80BS23H	7.880	1-3/4	10.2	1 1-3/16 1-1/4 1-3/8 1-7/16 1-1/2 1-5/8 1-3/4 1-15/16 2 2-3/16 2-7/16
24	80BS24H	8.200	1-3/4	10.8	1 1-3/16 1-1/4 1-3/8 1-7/16 1-1/2 1-5/8 1-3/4 1-15/16 2 2-3/16 2-7/16
25	80BS25H	8.520	1-3/4	11.4	1 1-3/16 1-1/4 1-3/8 1-7/16 1-1/2 1-5/8 1-3/4 1-15/16 2 2-3/16 2-7/16
26	80BS26H	8.840	2	14.0	1-1/4 1-3/8 1-7/16 1-1/2 1-5/8 1-3/4 1-15/16 2 2-3/16 2-7/16 2-15/16
27	80BS27H	9.160	2	14.7	1-1/4 1-3/8 1-7/16 1-1/2 1-5/8 1-3/4 1-15/16 2 2-3/16 2-7/16 2-15/16
28	80BS28H	9.480	2	15.3	1-1/4 1-3/8 1-7/16 1-1/2 1-5/8 1-3/4 1-15/16 2 2-3/16 2-7/16 2-15/16
29	80BS29H	9.800	2	16.4	1-1/4 1-3/8 1-7/16 1-1/2 1-5/8 1-3/4 1-15/16 2 2-3/16 2-7/16 2-15/16
30	80BS30H	10.110	2	16.7	1-1/4 1-3/8 1-7/16 1-1/2 1-5/8 1-3/4 1-15/16 2 2-3/16 2-7/16 2-15/16
31	80BS31H	10.430	2	18.0	1-1/4 1-3/8 1-7/16 1-1/2 1-5/8 1-3/4 1-15/16 2 2-3/16 2-7/16 2-15/16
32	80BS32H	10.750	2	18.8	1-1/4 1-3/8 1-7/16 1-1/2 1-5/8 1-3/4 1-15/16 2 2-3/16 2-7/16 2-15/16
33	80BS33H	11.070	2	18.9	1-1/4 1-3/8 1-7/16 1-1/2 1-5/8 1-3/4 1-15/16 2 2-3/16 2-7/16 2-15/16
34	80BS34H	11.390	2	20.6	1-1/4 1-3/8 1-7/16 1-1/2 1-5/8 1-3/4 1-15/16 2 2-3/16 2-7/16 2-15/16
35	80BS35H	11.710	2	21.4	1-1/4 1-3/8 1-7/16 1-1/2 1-5/8 1-3/4 1-15/16 2 2-3/16 2-7/16 2-15/16
36	80BS36H	12.030	2	22.5	1-1/4 1-3/8 1-7/16 1-1/2 1-5/8 1-3/4 1-15/16 2 2-3/16 2-7/16 2-15/16
37	80BS37	12.350	2	23.9	1-1/4 1-3/8 1-7/16 1-1/2 1-5/8 1-3/4 1-15/16 2 2-3/16 2-7/16 2-15/16
38	80BS38	12.670	2	24.0	1-1/4 1-3/8 1-7/16 1-1/2 1-5/8 1-3/4 1-15/16 2 2-3/16 2-7/16 2-15/16
39	80BS39	12.990	2	24.9	1-1/4 1-3/8 1-7/16 1-1/2 1-5/8 1-3/4 1-15/16 2 2-3/16 2-7/16 2-15/16
40	80BS40	13.310	2	26.0	1-1/4 1-3/8 1-7/16 1-1/2 1-5/8 1-3/4 1-15/16 2 2-3/16 2-7/16 2-15/16
41	80BS41	13.630	2	27.1	1-3/8 1-7/16 1-1/2 1-5/8 1-3/4 1-15/16 2 2-3/16 2-7/16 2-15/16
42	80BS42	13.940	2	28.0	1-3/8 1-7/16 1-1/2 1-5/8 1-3/4 1-15/16 2 2-3/16 2-7/16 2-15/16
43	80BS43	14.260	2	29.3	1-3/8 1-7/16 1-1/2 1-5/8 1-3/4 1-15/16 2 2-3/16 2-7/16 2-15/16
44	80BS44	14.580	2	30.2	1-3/8 1-7/16 1-1/2 1-5/8 1-3/4 1-15/16 2 2-3/16 2-7/16 2-15/16
45	80BS45	14.900	2	31.3	1-3/8 1-7/16 1-1/2 1-5/8 1-3/4 1-15/16 2 2-3/16 2-7/16 2-15/16
46	80BS46	15.220	2	32.4	1-3/8 1-7/16 1-1/2 1-5/8 1-3/4 1-15/16 2 2-3/16 2-7/16 2-15/16
47	80BS47	15.540	2	33.3	1-3/8 1-7/16 1-1/2 1-5/8 1-3/4 1-15/16 2 2-3/16 2-7/16 2-15/16
48	80BS48	15.860	2	34.8	1-3/8 1-7/16 1-1/2 1-5/8 1-3/4 1-15/16 2 2-3/16 2-7/16 2-15/16
49	80BS49	16.180	2	35.1	1-3/8 1-7/16 1-1/2 1-5/8 1-3/4 1-15/16 2 2-3/16 2-7/16 2-15/16
50	80BS50	16.500	2	36.6	1-3/8 1-7/16 1-1/2 1-5/8 1-3/4 1-15/16 2 2-3/16 2-7/16 2-15/16
51	80BS51	16.810	2	38.5	1-3/8 1-7/16 1-1/2 1-5/8 1-3/4 1-15/16 2 2-3/16 2-7/16 2-15/16
52	80BS52	17.130	2	40.3	1-3/8 1-7/16 1-1/2 1-5/8 1-3/4 1-15/16 2 2-3/16 2-7/16 2-15/16
53	80BS53	17.450	2	42.2	1-3/8 1-7/16 1-1/2 1-5/8 1-3/4 1-15/16 2 2-3/16 2-7/16 2-15/16
54	80BS54	17.770	2	44.0	1-3/8 1-7/16 1-1/2 1-5/8 1-3/4 1-15/16 2 2-3/16 2-7/16 2-15/16
55	80BS55	18.090	2	46.3	1-3/8 1-7/16 1-1/2 1-5/8 1-3/4 1-15/16 2 2-3/16 2-7/16 2-15/16
56	80BS56	18.410	2	47.3	1-3/8 1-7/16 1-1/2 1-5/8 1-3/4 1-15/16 2 2-3/16 2-7/16 2-15/16
57	80BS57	18.730	2	48.9	1-3/8 1-7/16 1-1/2 1-5/8 1-3/4 1-15/16 2 2-3/16 2-7/16 2-15/16
58	80BS58	19.040	2	50.6	1-3/8 1-7/16 1-1/2 1-5/8 1-3/4 1-15/16 2 2-3/16 2-7/16 2-15/16
59	80BS59	19.360	2	52.2	1-3/8 1-7/16 1-1/2 1-5/8 1-3/4 1-15/16 2 2-3/16 2-7/16 2-15/16
60	80BS60	19.680	2	53.8	1-3/8 1-7/16 1-1/2 1-5/8 1-3/4 1-15/16 2 2-3/16 2-7/16 2-15/16
70	80BS70	22.870	2	66.4	1-3/8 1-7/16 1-1/2 1-5/8 1-3/4 1-15/16 2 2-3/16 2-7/16 2-15/16
72	80BS72	23.500	2	70.0	1-3/8 1-7/16 1-1/2 1-5/8 1-3/4 1-15/16 2 2-3/16 2-7/16 2-15/16
80	80BS80	26.050	2	79.8	1-3/8 1-7/16 1-1/2 1-5/8 1-3/4 1-15/16 2 2-3/16 2-7/16 2-15/16
84	80BS84	27.330	2	87.2	1-3/8 1-7/16 1-1/2 1-5/8 1-3/4 1-15/16 2 2-3/16 2-7/16 2-15/16
96	80BS96	31.150	2	103.0	1-3/8 1-7/16 1-1/2 1-5/8 1-3/4 1-15/16 2 2-3/16 2-7/16 2-15/16
112	80BS112	36.240	2	142.0	1-3/8 1-7/16 1-1/2 1-5/8 1-3/4 1-15/16 2 2-3/16 2-7/16 2-15/16



Type BS

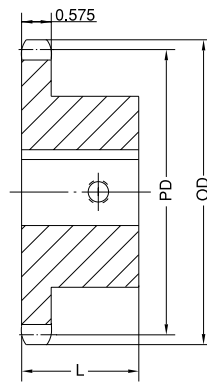
H - Denotes hardened teeth.

Larger bore sizes require hubs of greater diameter.

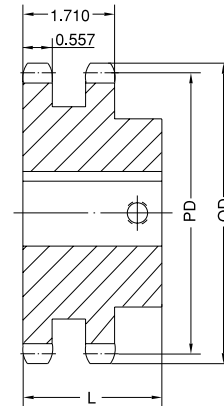
Keyway centered on line of tooth.

FINISHED BORE **No. 80**

1" Pitch



Type BS



Type BS

Single Type BS Winch — 2 Setscrews

No. of Teeth	Part No.	OD	PD	L	App. Wt. (Lbs.)	Finished Bores: Keyway with Setscrews at 90° from Keyway
10	80BS10W	3.680	3.236	1-5/8	1.7	1-1/4
11	80BS11W	4.010	3.550	1-5/8	1.8	1-1/4
12	80BS12W	4.330	3.864	1-5/8	3.0	1-1/4
15	80BS15W	5.300	4.810	1-1/2	5.2	1-1/4
18	80BS18W	6.270	5.759	1-1/2	7.8	1-1/4 1-1/2

Double Type BS Winch — 2 Setscrews

No. of Teeth	Part No.	OD	PD	L	App. Wt. (Lbs.)	Finished Bores: Keyway with Setscrews at 90° from Keyway
12	D80BS12HW	4.330	3.864	2-1/2	5.2	1-1/4 1-1/2 1-3/4
15	D80BS15HW	5.300	4.810	2-1/2	9.2	1-1/4 1-1/2 1-3/4
18	D80BS18HW	6.270	5.759	2-3/4	13.5	1-1/2 1-3/4 2
20	D80BS20HW	6.910	6.392	2-3/4	16.2	1-1/2 1-3/4 2
24	D80BS24HW	8.200	7.661	2-3/4	23.2	1-1/2 2

H - Denotes hardened teeth.

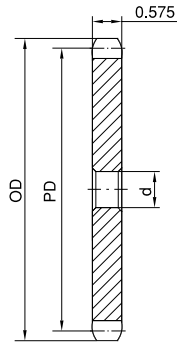
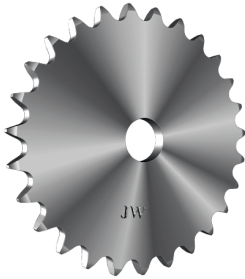
1-1/4" and 1-1/2" bore have a 5/16" x 5/32" keyway.

1-3/4" and 2" bore have a 3/8" x 3/16" keyway.

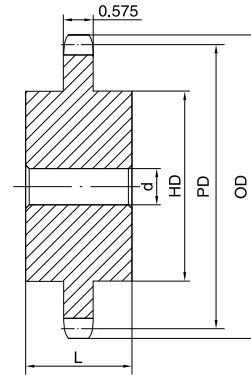
Keyway centered on line of tooth.

No. 80 STOCK SPROCKETS

1" Pitch



Type A



Type C

Single Type A

No. of Teeth	Part No.	OD	PD	d	App. Wt. (Lbs.)	No. of Teeth	Part No.	OD	PD	d	App. Wt. (Lbs.)
9	80A9H	3.350	2.924	15/16	0.8	40	80A40	13.310	12.746	1-3/16	18.9
10	80A10H	3.680	3.236	15/16	1.0	41	80A41	13.630	13.064	1-1/4	21.0
11	80A11H	4.010	3.550	15/16	1.3	42	80A42	13.940	13.382	1-1/4	21.8
12	80A12H	4.330	3.864	15/16	1.5	43	80A43	14.260	13.700	1-1/4	23.6
13	80A13H	4.660	4.179	15/16	1.8	44	80A44	14.580	14.018	1-1/4	24.3
14	80A14H	4.980	4.494	15/16	2.2	45	80A45	14.900	14.336	1-1/4	25.2
15	80A15H	5.300	4.810	15/16	2.5	46	80A46	15.220	14.654	1-1/4	26.0
16	80A16H	5.630	5.126	15/16	2.9	47	80A47	15.540	14.972	1-1/4	26.4
17	80A17H	5.950	5.442	15/16	3.3	48	80A48	15.860	15.290	1-1/4	27.8
18	80A18H	6.270	5.759	15/16	3.7	49	80A49	16.180	15.608	1-1/4	28.9
19	80A19H	6.590	6.076	15/16	4.1	50	80A50	16.500	15.926	1-1/4	30.9
20	80A20H	6.910	6.392	15/16	4.7	51	80A51	16.810	16.244	1-1/4	32.2
21	80A21H	7.240	6.710	15/16	4.9	52	80A52	17.130	16.562	1-1/4	33.0
22	80A22H	7.560	7.027	15/16	5.5	53	80A53	17.450	16.880	1-1/4	34.9
23	80A23H	7.880	7.344	15/16	6.3	54	80A54	17.770	17.198	1-1/4	36.6
24	80A24H	8.200	7.661	15/16	6.7	55	80A55	18.090	17.516	1-1/4	37.5
25	80A25H	8.520	7.979	15/16	7.2	56	80A56	18.410	17.835	1-1/4	39.4
26	80A26H	8.840	8.296	1-3/16	7.8	57	80A57	18.730	18.153	1-1/4	40.4
27	80A27H	9.160	8.614	1-3/16	8.6	58	80A58	19.040	18.471	1-1/4	41.3
28	80A28H	9.480	8.931	1-3/16	9.3	59	80A59	19.360	18.789	1-1/4	42.9
29	80A29H	9.800	9.249	1-3/16	9.8	60	80A60	19.680	19.107	1-1/4	45.3
30	80A30H	10.110	9.567	1-3/16	10.7	65	80A65	21.270	20.698	1-1/4	52.2
31	80A31H	10.430	9.884	1-3/16	11.3	70	80A70	22.870	22.289	1-1/2	59.8
32	80A32H	10.750	10.202	1-3/16	12.1	72	80A72	23.500	22.926	1-1/2	65.7
33	80A33H	11.070	10.520	1-3/16	13.6	76	80A76	24.780	24.198	1-1/2	70.2
34	80A34H	11.390	10.838	1-3/16	14.3	80	80A80	26.050	25.471	1-1/2	79.6
35	80A35H	11.710	11.156	1-3/16	14.8	84	80A84	27.330	26.744	1-1/2	86.1
36	80A36H	12.030	11.471	1-3/16	16.1	90	80A90	29.240	28.654	1-1/2	101.0
37	80A37	12.350	11.792	1-3/16	16.8	96	80A96	31.150	30.563	1-1/2	120.0
38	80A38	12.670	12.110	1-3/16	17.2	112	80A112	36.240	35.655	1-1/2	165.0
39	80A39	12.990	12.428	1-3/16	17.9						

Single Type C

No. of Teeth	Part No.	OD	PD	d		HD	L	App. Wt. (Lbs.)	No. of Teeth	Part No.	OD	PD	d		HD	L	App. Wt. (Lbs.)
				Min.	Max.								Min.	Max.			
11	80C11	4.010	3.550	1	1-5/8	2-29/32*	2-3/8	3.8	70	80C70	22.870	22.289	1-1/2	4-1/4	6-1/4	3-1/2	75.7
12	80C12	4.330	3.864	1	1-7/8	3-1/8*	2-3/8	4.3	72	80C72	23.500	22.926	1-1/2	4-1/4	6-1/4	3-1/2	81.4
13	80C13	4.660	4.179	1	2	3-1/64	2-3/8	5.3	76	80C76	24.780	24.198	1-1/2	4-1/4	6-1/4	3-1/2	87.8
14	80C14	4.980	4.494	1	2-1/4	3-11/32	2-3/8	6.4	80	80C80	26.050	25.471	1-1/2	4-1/4	6-1/4	3-1/2	89.9
15	80C15	5.300	4.810	1	2-1/2	3-13/16	2-3/8	7.7	84	80C84	27.330	26.744	1-1/2	4-1/4	6-1/4	3-1/2	99.2
16	80C16	5.630	5.126	1	2-3/4	4	2-3/8	8.8	90	80C90	29.240	28.654	1-1/2	4-1/4	6-1/4	3-1/2	106.0
									96	80C96	31.150	30.563	1-1/2	4-1/4	6-1/4	3-1/2	117.0
									112	80C112	36.240	35.655	1-1/2	4-1/4	6-1/4	3-1/2	154.0

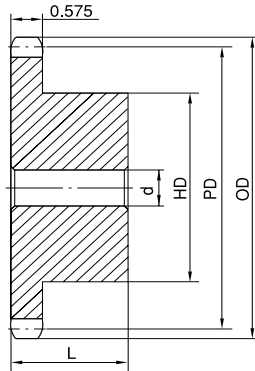
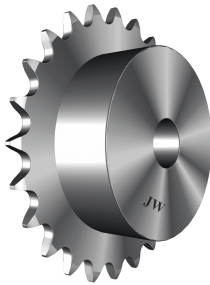
H - Denotes hardened teeth.

Maximum bores shown, accommodate standard keyway with setscrew positioned over keyway.

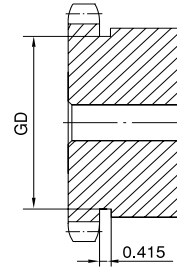
* Hub has recessed groove allowing for chain clearance. Groove depth is the same as Single Type B; see page 27.

STOCK SPROCKETS No. 80

1" Pitch



Type B



Type B

Single Type B

No. of Teeth	Part No.	OD	PD	d		HD	L	App. Wt. (Lbs.)	No. of Teeth	Part No.	OD	PD	d		HD	L	App. Wt. (Lbs.)
				Min.	Max.								Min.	Max.			
8	80B8H	3.010	2.613	1	1	1-15/16*	1-5/8	1.4	37	80B37	12.350	11.792	1-3/16	3-1/4	4-3/4	2	23.8
9	80B9H	3.350	2.924	1	1-5/16	2-1/4*	1-5/8	1.6	38	80B38	12.670	12.110	1-3/16	3-1/4	4-3/4	2	24.7
10	80B10H	3.680	3.236	1	1-1/2	2-9/16*	1-5/8	2.2	39	80B39	12.990	12.428	1-3/16	3-1/4	4-3/4	2	25.6
11	80B11H	4.010	3.550	1	1-5/8	2-13/16*	1-5/8	3.2	40	80B40	13.310	12.746	1-3/16	3-1/4	4-3/4	2	26.7
12	80B12H	4.330	3.864	1	1-7/8	3-1/8*	1-5/8	3.4	41	80B41	13.630	13.064	1-1/4	3-1/4	4-3/4	2	27.8
13	80B13H	4.660	4.179	1	2	3	1-1/2	3.5	42	80B42	13.940	13.382	1-1/4	3-1/4	4-3/4	2	28.7
14	80B14H	4.980	4.494	1	2-1/4	3-1/4	1-1/2	4.1	43	80B43	14.260	13.700	1-1/4	3-1/4	4-3/4	2	29.4
15	80B15H	5.300	4.810	1	2-1/2	3-13/16	1-1/2	5.3	44	80B44	14.580	14.018	1-1/4	3-1/4	4-3/4	2	29.9
16	80B16H	5.630	5.126	1	2-3/4	4	1-1/2	5.9	45	80B45	14.900	14.336	1-1/4	3-1/4	4-3/4	2	31.4
17	80B17H	5.950	5.442	1	2-3/4	4	1-1/2	6.6	46	80B46	15.220	14.654	1-1/4	3-1/4	4-3/4	2	33.1
18	80B18H	6.270	5.759	1	2-3/4	4-1/4	1-1/2	7.3	47	80B47	15.540	14.972	1-1/4	3-1/4	4-3/4	2	34.0
19	80B19H	6.590	6.076	1	2-3/4	4-1/4	1-1/2	7.8	48	80B48	15.860	15.290	1-1/4	3-1/4	4-3/4	2	35.5
20	80B20H	6.910	6.392	1	2-3/4	4-1/4	1-1/2	8.4	49	80B49	16.180	15.608	1-1/4	3-1/4	4-3/4	2	35.8
21	80B21H	7.240	6.710	1	2-3/4	4-1/4	1-3/4	9.4	50	80B50	16.500	15.926	1-1/4	3-1/4	4-3/4	2	37.3
22	80B22H	7.560	7.027	1	2-3/4	4-1/4	1-3/4	10.0	51	80B51	16.810	16.244	1-1/4	3-1/4	4-3/4	2	38.6
23	80B23H	7.880	7.344	1	2-3/4	4-1/4	1-3/4	10.7	52	80B52	17.130	16.562	1-1/4	3-1/4	4-3/4	2	39.4
24	80B24H	8.200	7.661	1	2-3/4	4-1/4	1-3/4	11.3	53	80B53	17.450	16.880	1-1/4	3-1/4	4-3/4	2	41.3
25	80B25H	8.520	7.979	1	2-3/4	4-1/4	1-3/4	11.9	54	80B54	17.770	17.198	1-1/4	3-1/2	5-1/4	2	44.7
26	80B26H	8.840	8.296	1-1/4	3-1/4	4-3/4	2	14.3	55	80B55	18.090	17.516	1-1/4	3-1/2	5-1/4	2	45.6
27	80B27H	9.160	8.614	1-1/4	3-1/4	4-3/4	2	15.4	56	80B56	18.410	17.835	1-1/4	3-1/2	5-1/4	2	47.5
28	80B28H	9.480	8.931	1-1/4	3-1/4	4-3/4	2	16.0	57	80B57	18.730	18.153	1-1/4	3-1/2	5-1/4	2	48.5
29	80B29H	9.800	9.249	1-3/16	3-1/4	4-3/4	2	17.1	58	80B58	19.040	18.471	1-1/4	3-1/2	5-1/4	2	50.5
30	80B30H	10.110	9.567	1-3/16	3-1/4	4-3/4	2	17.4	59	80B59	19.360	18.789	1-1/4	3-1/2	5-1/4	2	52.1
31	80B31H	10.430	9.884	1-3/16	3-1/4	4-3/4	2	18.7	60	80B60	19.680	19.107	1-1/4	3-1/2	5-1/4	2	54.5
32	80B32H	10.750	10.202	1-3/16	3-1/4	4-3/4	2	19.5	65	80B65	21.270	20.698	1-1/4	3-1/2	5-1/4	2	61.8
33	80B33H	11.070	10.520	1-3/16	3-1/4	4-3/4	2	19.6									
34	80B34H	11.390	10.838	1-3/16	3-1/4	4-3/4	2	21.3									
35	80B35H	11.710	11.156	1-3/16	3-1/4	4-3/4	2	22.1									
36	80B36H	12.030	11.471	1-3/16	3-1/4	4-3/4	2	23.1									

H - Denotes hardened teeth.

Maximum bores shown, accommodate standard keyway with setscrew positioned over keyway.

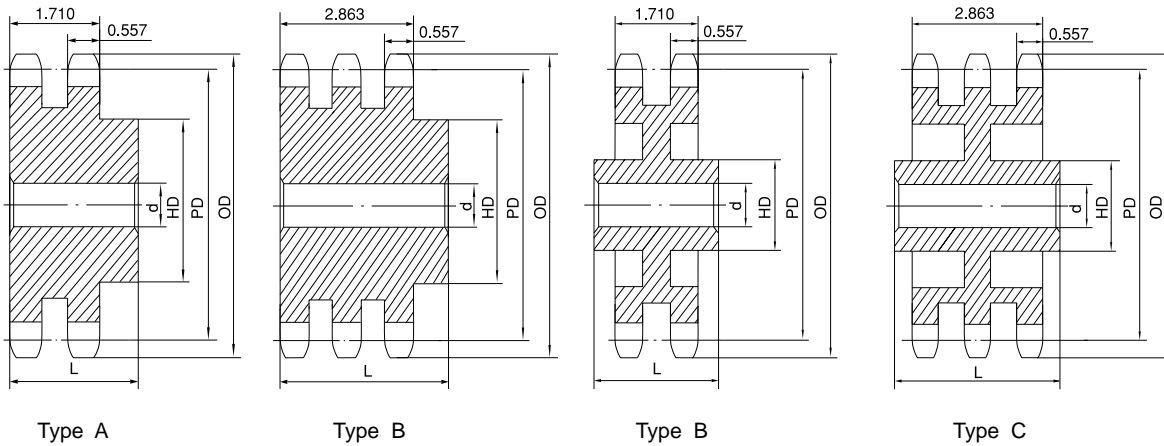
* Hub has recessed groove allowing for chain clearance. GD are as follows:

8 Teeth = 1.437in 9 Teeth = 1.756in 10 Teeth = 2.067in

11 Teeth = 2.381in 12 Teeth = 2.695in

No. 80 STOCK SPROCKETS

1" Pitch



Double Type B & C

Triple Type B & C

No. of Teeth	OD	PD	Double Type B & C							Triple Type B & C						
			Part No.	Type	d		HD	L	App. Wt. (Lbs.)	Part No.	Type	d		HD	L	App. Wt. (Lbs.)
					Min.	Max.						Min.	Max.			
10	3.680	3.236	D80B10H	B	1	1-1/2	2-9/16*	2-3/4	3.6	T80B10H	B	1	1-1/2	2-9/16	3-5/8	4.4
11	4.010	3.550	D80B11H	B	1	1-3/4	2-1/2	2-1/2	4.0	T80B11H	B	1	1-3/4	2-1/2	3-5/8	5.9
12	4.330	3.864	D80B12H	B	1	1-7/8	2-27/32	2-1/2	5.1	T80B12H	B	1	1-7/8	2-27/32	3-5/8	7.5
13	4.660	4.179	D80B13H	B	1	2-1/4	3-5/32	2-1/2	6.3	T80B13H	B	1	2-1/4	3-5/32	3-5/8	9.2
14	4.980	4.494	D80B14H	B	1	2-3/8	3-15/32	2-1/2	7.6	T80B14H	B	1	2-3/8	3-15/32	3-5/8	11.0
15	5.300	4.810	D80B15H	B	1	2-1/2	3-51/64	2-1/2	9.0	T80B15H	B	1	2-1/2	3-51/64	3-5/8	13.1
16	5.630	5.126	D80B16H	B	1	2-3/4	4	2-3/4	11.0	T80B16H	B	1	2-3/4	4	3-7/8	15.8
17	5.950	5.442	D80B17H	B	1	3	4-27/64	2-3/4	13.2	T80B17H	B	1	3	4-27/64	3-7/8	18.6
18	6.270	5.759	D80B18H	B	1	3-1/4	4-47/64	2-3/4	15.0	T80B18H	B	1	3-1/4	4-47/64	3-7/8	21.2
19	6.590	6.076	D80B19H	B	1	3-5/16	5	2-3/4	17.0	T80B19H	B	1	3-5/16	5	3-7/8	23.7
20	6.910	6.392	D80B20H	B	1	3-5/16	5	2-3/4	18.2	T80B20H	B	1	3-5/16	5	3-7/8	26.0
21	7.240	6.710	D80B21H	B	1	3-5/16	5	2-3/4	19.6	T80B21H	B	1	3-5/16	5	3-7/8	28.4
22	7.560	7.027	D80B22H	B	1	3-5/16	5	2-3/4	21.0	T80B22H	B	1	3-5/16	5	3-7/8	31.0
23	7.880	7.344	D80B23H	B	1	3-5/16	5	2-3/4	22.8	T80B23H	B	1	3-5/16	5	3-7/8	33.6
24	8.200	7.661	D80B24H	B	1	3-1/2	5-1/4	2-3/4	25.1	T80B24H	B	1	3-1/2	5-1/4	3-7/8	37.1
25	8.520	7.979	D80B25H	B	1	3-1/2	5-1/4	3	28.3	T80B25H	B	1	3-1/2	5-1/4	3-7/8	40.1
26	8.840	8.296	D80B26	B	1	3-1/2	5-1/4	3	29.9	T80B26	B	1	3-1/2	5-1/4	3-7/8	42.9
30	10.110	9.567	D80B30	B	1-1/4	3-3/4	5-3/4	3	39.5	T80B30	B	1-1/4	3-3/4	5-3/4	4-1/4	54.5
32	10.750	10.202	D80B32	B	1-1/4	3-3/4	5-3/4	3	43.8	T80B32	B	1-1/4	3-3/4	5-3/4	4-1/4	64.5
35	11.710	11.156	D80B35	B	1-1/4	3-3/4	5-3/4	3	49.1	T80B35	B	1-1/4	3-3/4	5-3/4	4-1/4	79.5
36	12.030	11.471	D80B36	B	1-1/4	3-3/4	5-3/4	3-1/8	54.2	T80B36	B	1-1/4	3-3/4	5-3/4	4-1/4	83.9
42	13.940	13.382	D80B42	B	1-1/4	3-3/4	5-3/4	3-1/8	71.5	T80C42	C	1-1/4	3-13/16	6	4-1/2	84.9
45	14.900	14.336	D80B45	B	1-1/4	3-3/4	5-3/4	3-1/8	73.5	T80C45	C	1-1/4	3-13/16	6	4-1/2	92.4
52	17.130	16.562	D80C52	C	1-1/2	3-3/4	5-3/4	3-3/4	78.4	T80C52	C	1-1/2	3-13/16	6	4-1/2	107.0
60	19.680	19.107	D80C60	C	1-1/2	3-3/4	5-3/4	3-3/4	93.3	T80C60	C	1-1/2	4-1/4	6-1/4	4-3/4	128.0
68	22.230	21.653	D80C68	C	1-1/2	3-13/16	6	4	96.2	T80C68	C	1-1/2	4-1/4	6-1/4	4-3/4	140.0
76	24.780	24.198	D80C76	C	1-1/2	3-13/16	6	4	113.0	T80C76	C	1-1/2	4-1/4	6-1/4	4-3/4	165.0
95	30.830	30.245	D80C95	C	1-1/2	4	6	4-1/4	165.0	T80C95	C	1-1/2	4-1/2	6-3/4	5	240.0

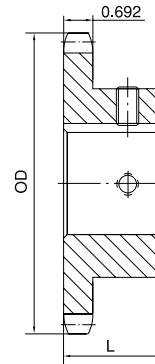
H - Denotes hardened teeth.

Maximum bores shown, accommodate standard keyway with setscrew positioned over keyway.

* Hub has recessed groove allowing for chain clearance. Groove depth is the same as Single Type B; see page 27.

FINISHED BORE No. 100

1-1/4" Pitch



Type BS

Single Type BS

No. of Teeth	Part No.	OD	L	App. Wt. (Lbs.)	Finished Bores (Includes Keyway and 2 Setscrews)
8	100BS8H	3.770	1-7/8	2.8	1 1-3/16 1-1/4
9	100BS9H	4.180	1-7/8	3.0	1 1-3/16 1-1/4 1-7/16
10	100BS10H	4.600	1-7/8	3.9	1 1-3/16 1-1/4 1-7/16
11	100BS11H	5.010	1-7/8	4.9	1 1-3/16 1-1/4 1-7/16 1-15/16 2 2-3/16
12	100BS12H	5.420	1-7/8	6.0	1 1-3/16 1-1/4 1-7/16 1-15/16 2 2-3/16
13	100BS13H	5.820	1-5/8	6.2	1 1-3/16 1-1/4 1-7/16 1-15/16 2 2-3/16
14	100BS14H	6.230	1-5/8	6.6	1-1/4 1-7/16 1-15/16 2 2-3/16
15	100BS15H	6.630	1-3/4	8.4	1-1/4 1-7/16 1-15/16 2 2-3/16
16	100BS16H	7.030	1-3/4	9.0	1-7/16 1-15/16 2 2-3/16 2-7/16 2-15/16
17	100BS17H	7.440	1-3/4	9.9	1-7/16 1-15/16 2 2-3/16 2-7/16 2-15/16
18	100BS18H	7.840	1-3/4	10.6	1-7/16 1-15/16 2 2-3/16 2-7/16 2-15/16
19	100BS19H	8.240	2	12.1	1-7/16 1-15/16 2 2-3/16 2-7/16 2-15/16
20	100BS20H	8.640	2	13.2	1-7/16 1-15/16 2 2-3/16 2-7/16 2-15/16
21	100BS21H	9.040	2	14.3	1-7/16 1-15/16 2 2-3/16 2-7/16 2-15/16
22	100BS22H	9.440	2	15.1	1-7/16 1-15/16 2 2-3/16 2-7/16 2-15/16
23	100BS23H	9.840	2	16.1	1-7/16 1-15/16 2 2-3/16 2-7/16 2-15/16
24	100BS24H	10.250	2	18.1	1-7/16 1-15/16 2 2-3/16 2-7/16 2-15/16
25	100BS25H	10.650	2	18.4	1-7/16 1-15/16 2 2-3/16 2-7/16 2-15/16
26	100BS26H	11.050	2	22.9	1-7/16 1-15/16 2 2-3/16 2-7/16 2-15/16 3 3-7/16 3-15/16
27	100BS27H	11.440	2	24.1	1-7/16 1-15/16 2 2-3/16 2-7/16 2-15/16 3 3-7/16 3-15/16
28	100BS28H	11.840	2	25.4	1-7/16 1-15/16 2 2-3/16 2-7/16 2-15/16 3 3-7/16 3-15/16
29	100BS29H	12.240	2	26.7	1-7/16 1-15/16 2 2-3/16 2-7/16 2-15/16 3 3-7/16 3-15/16
30	100BS30H	12.640	2	28.1	1-7/16 1-15/16 2 2-3/16 2-7/16 2-15/16 3 3-7/16 3-15/16
31	100BS31H	13.040	2	29.6	1-7/16 1-15/16 2 2-3/16 2-7/16 2-15/16 3 3-7/16 3-15/16
32	100BS32H	13.440	2	31.0	1-7/16 1-15/16 2 2-3/16 2-7/16 2-15/16 3 3-7/16 3-15/16
33	100BS33	13.840	2-1/2	32.5	1-7/16 1-15/16 2 2-3/16 2-7/16 2-15/16 3 3-7/16 3-15/16
34	100BS34	14.240	2-1/2	34.1	1-7/16 1-15/16 2 2-3/16 2-7/16 2-15/16 3 3-7/16 3-15/16
35	100BS35	14.640	2-1/2	35.1	1-7/16 1-15/16 2 2-3/16 2-7/16 2-15/16 3 3-7/16 3-15/16
36	100BS36	15.040	2-1/2	36.7	1-7/16 1-15/16 2 2-3/16 2-7/16 2-15/16 3 3-7/16 3-15/16
37	100BS37	15.440	2-1/2	38.2	1-7/16 1-15/16 2 2-3/16 2-7/16 2-15/16 3 3-7/16 3-15/16
38	100BS38	15.840	2-1/2	39.4	1-7/16 1-15/16 2 2-3/16 2-7/16 2-15/16 3 3-7/16 3-15/16
39	100BS39	16.230	2-1/2	41.4	1-7/16 1-15/16 2 2-3/16 2-7/16 2-15/16 3 3-7/16 3-15/16
40	100BS40	16.630	2-1/2	44.5	1-7/16 1-15/16 2 2-3/16 2-7/16 2-15/16 3 3-7/16 3-15/16
42	100BS42	17.430	2-1/2	48.0	1-7/16 1-15/16 2 2-3/16 2-7/16 2-15/16 3 3-7/16 3-15/16
45	100BS45	18.630	2-1/2	51.0	1-7/16 1-15/16 2 2-3/16 2-7/16 2-15/16 3 3-7/16 3-15/16
48	100BS48	19.820	2-1/2	62.0	1-7/16 1-15/16 2 2-3/16 2-7/16 2-15/16 3 3-7/16 3-15/16
54	100BS54	22.210	2-1/2	72.0	1-7/16 1-15/16 2 2-3/16 2-7/16 2-15/16 3 3-7/16 3-15/16
60	100BS60	24.600	2-1/2	80.0	1-7/16 1-15/16 2 2-3/16 2-7/16 2-15/16 3 3-7/16 3-15/16
70	100BS70	28.580	2-1/2	109.0	1-7/16 1-15/16 2 2-3/16 2-7/16 2-15/16 3 3-7/16 3-15/16
72	100BS72	29.380	2-1/2	147.0	1-7/16 1-15/16 2 2-3/16 2-7/16 2-15/16 3 3-7/16 3-15/16
80	100BS80	32.570	2-1/2	174.0	1-7/16 1-15/16 2 2-3/16 2-7/16 2-15/16 3 3-7/16 3-15/16
84	100BS84	34.160	2-1/2	189.0	1-7/16 1-15/16 2 2-3/16 2-7/16 2-15/16 3 3-7/16 3-15/16
90	100BS90	36.550	2-1/2	213.0	1-7/16 1-15/16 2 2-3/16 2-7/16 2-15/16 3 3-7/16 3-15/16
96	100BS96	38.930	2-1/2	239.0	1-7/16 1-15/16 2 2-3/16 2-7/16 2-15/16 3 3-7/16 3-15/16

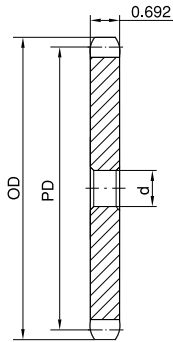
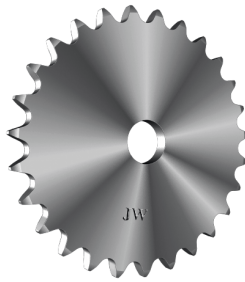
H - Denotes hardened teeth.

Larger bore sizes require hubs of greater diameter.

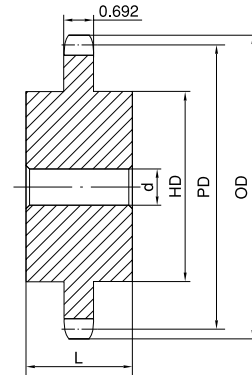
Keyway centered on line of tooth.

No. 100 STOCK SPROCKETS

1-1/4" Pitch



Type A



Type C

Single Type A

No. of Teeth	Part No.	OD	PD	d	App. Wt. (Lbs.)	No. of Teeth	Part No.	OD	PD	d	App. Wt. (Lbs.)
7	100A7H	3.350	2.881	1	1.2	38	100A38	15.840	15.138	1-1/4	33.0
8	100A8H	3.770	3.266	1	1.4	39	100A39	16.230	15.535	1-1/4	35.0
9	100A9H	4.180	3.655	1	1.6	40	100A40	16.630	15.933	1-1/4	37.0
10	100A10H	4.600	4.045	1	2.0	41	100A41	17.030	16.330	1-1/4	39.0
11	100A11H	5.010	4.438	1-1/4	2.5	42	100A42	17.430	16.728	1-1/4	40.0
12	100A12H	5.420	4.830	1-1/4	3.0	43	100A43	17.830	17.125	1-1/2	43.0
13	100A13H	5.820	5.224	1-1/4	3.5	44	100A44	18.230	17.523	1-1/2	45.0
14	100A14H	6.230	5.618	1-1/4	4.1	45	100A45	18.630	17.920	1-1/2	47.0
15	100A15H	6.630	6.013	1-1/4	4.7	46	100A46	19.020	18.318	1-1/2	49.0
16	100A16H	7.030	6.408	1-1/4	5.4	47	100A47	19.420	18.715	1-1/2	52.0
17	100A17H	7.440	6.803	1-1/4	6.1	48	100A48	19.820	19.113	1-1/2	54.0
18	100A18H	7.840	7.199	1-1/4	7.0	49	100A49	20.220	19.510	1-1/2	56.0
19	100A19H	8.240	7.595	1-1/4	7.8	50	100A50	20.620	19.908	1-1/2	57.0
20	100A20H	8.640	7.990	1-1/4	8.8	51	100A51	21.020	20.305	1-1/2	63.0
21	100A21H	9.040	8.388	1-1/4	9.8	52	100A52	21.420	20.703	1-1/2	64.0
22	100A22H	9.440	8.784	1-1/4	10.5	53	100A53	21.810	21.100	1-1/2	66.0
23	100A23H	9.840	9.180	1-1/4	11.8	54	100A54	22.210	21.498	1-1/2	68.0
24	100A24H	10.250	9.576	1-1/4	12.8	55	100A55	22.610	21.895	1-1/2	70.0
25	100A25H	10.650	9.974	1-1/4	13.9	56	100A56	23.010	22.294	1-1/2	72.0
26	100A26H	11.050	10.370	1-1/4	15.0	57	100A57	23.410	22.691	1-1/2	74.8
27	100A27H	11.440	10.768	1-1/4	16.0	58	100A58	23.810	23.089	1-1/2	76.0
28	100A28H	11.840	11.164	1-1/4	17.4	59	100A59	24.200	23.486	1-1/2	78.0
29	100A29H	12.240	11.561	1-1/4	19.6	60	100A60	24.600	23.884	1-1/2	80.0
30	100A30H	12.640	11.959	1-1/4	20.1	70	100A70	28.580	27.861	1-1/2	113.0
31	100A31H	13.040	12.355	1-1/4	21.5	72	100A72	29.380	28.658	1-1/2	119.0
32	100A32H	13.440	12.753	1-1/4	22.6	76	100A76	30.970	30.248	1-1/2	133.0
33	100A33	13.840	13.150	1-1/4	24.1	80	100A80	32.570	31.839	1-1/2	146.0
34	100A34	14.240	13.548	1-1/4	26.0	84	100A84	34.160	33.430	1-1/2	162.0
35	100A35	14.640	13.945	1-1/4	27.2	90	100A90	36.550	35.818	1-1/2	193.0
36	100A36	15.040	14.343	1-1/4	30.0	96	100A96	38.930	38.204	1-1/2	215.0
37	100A37	15.440	14.740	1-1/4	31.0						

Single Type C

No. of Teeth	Part No.	OD	PD	d		HD	L	App. Wt. (Lbs.)	No. of Teeth	Part No.	OD	PD	d		HD	L	App. Wt. (Lbs.)
				Min.	Max.								Min.	Max.			
10	100C10	4.600	4.045	1	1-7/8	3-9/32*	2-7/8	6.1	54	100C54	22.210	21.498	1-1/2	4	6	3-1/4	78.0
11	100C11	5.010	4.438	1	2-1/4	3-9/16*	2-7/8	7.1	60	100C60	24.600	23.884	1-1/2	4	6	3-1/4	89.0
12	100C12	5.420	4.830	1	2-1/4	4*	2-7/8	8.3	70	100C70	28.580	27.861	1-1/2	5-1/4	7	3-3/4	125.0
13	100C13	5.820	5.224	1	2-3/8	3-57/64	2-7/8	10.0	72	100C72	29.380	28.658	1-1/2	5-1/4	7	3-3/4	134.0
14	100C14	6.230	5.618	1-1/4	2-3/4	4-3/16	2-7/8	12.1	76	100C76	30.970	30.248	1-1/2	5-1/4	7	3-3/4	143.0
									80	100C80	32.570	31.839	1-1/2	5-1/4	7	3-3/4	151.0
									84	100C84	34.160	33.430	1-1/2	5-1/4	7	3-3/4	170.0
									90	100C90	36.550	35.818	1-1/2	5-1/4	7	3-3/4	184.0
									96	100C96	38.930	38.204	1-1/2	5-1/4	7	4-1/2	203.0

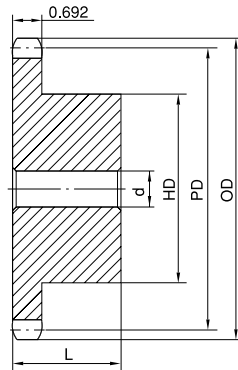
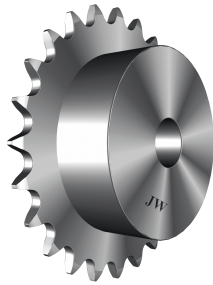
H - Denotes hardened teeth.

Maximum bores shown, accommodate standard keyway with setscrew positioned over keyway.

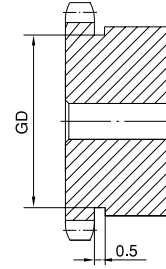
* Hub has recessed groove allowing for chain clearance. Groove depth is the same as Single Type B; see page 31.

STOCK SPROCKETS No. 100

1-1/4" Pitch



Type B



Type B

Single Type B

No. of Teeth	Part No.	OD	PD	d		HD	L	App. Wt. (Lbs.)	No. of Teeth	Part No.	OD	PD	d		HD	L	App. Wt. (Lbs.)
				Min.	Max.								Min.	Max.			
8	100B8H	3.770	3.266	1	1-1/4	2-7/16*	1-7/8	2.3	29	100B29H	12.240	11.561	1-1/4	3-5/16	5	2	25.0
9	100B9H	4.180	3.655	1	1-5/8	2-13/16*	1-7/8	3.2	30	100B30H	12.640	11.959	1-1/4	3-5/16	5	2	26.9
10	100B10H	4.600	4.045	1	1-7/8	3-1/4*	1-7/8	4.1	31	100B31H	13.040	12.355	1-1/4	3-5/16	5	2	28.2
11	100B11H	5.010	4.438	1	2-1/4	3-9/16*	1-7/8	5.3	32	100B32H	13.440	12.753	1-1/4	3-5/16	5	2	29.8
12	100B12H	5.420	4.830	1	2-1/4	4*	1-7/8	6.4	33	100B33	13.840	13.150	1-1/4	3-5/16	5	2	32.1
13	100B13H	5.820	5.224	1	2-3/8	3-7/8	1-5/8	6.6	34	100B34	14.240	13.548	1-1/4	3-5/16	5	2-1/2	34.5
14	100B14H	6.230	5.618	1-1/4	2-3/4	4-3/16	1-5/8	7.4	35	100B35	14.640	13.945	1-1/4	3-5/16	5	2-1/2	36.9
15	100B15H	6.630	6.013	1-1/4	3	4-1/2	1-3/4	9.2	36	100B36	15.040	14.343	1-1/4	3-5/16	5	2-1/2	38.6
16	100B16H	7.030	6.408	1-5/16	3	4-1/2	1-3/4	9.9	37	100B37	15.440	14.740	1-1/4	3-5/16	5	2-1/2	40.0
17	100B17H	7.440	6.803	1-5/16	3	4-1/2	1-3/4	10.8	38	100B38	15.840	15.138	1-1/4	3-5/16	5	2-1/2	41.5
18	100B18H	7.840	7.199	1-5/16	3	4-1/2	1-3/4	11.5	39	100B39	16.230	15.535	1-1/4	3-5/16	5	2-1/2	43.6
19	100B19H	8.240	7.595	1-5/16	3	4-1/2	2	13.1	40	100B40	16.630	15.933	1-1/4	3-5/16	5	2-1/2	46.9
20	100B20H	8.640	7.990	1-5/16	3	4-1/2	2	14.2	42	100B42	17.430	16.728	1-1/4	3-5/16	5	2-1/2	50.4
21	100B21H	9.040	8.388	1-5/16	3	4-1/2	2	15.3	45	100B45	18.630	17.920	1-1/2	3-5/16	5	2-1/2	54.0
22	100B22H	9.440	8.784	1-5/16	3	4-1/2	2	16.1	48	100B48	19.820	19.113	1-1/2	4	6	2-1/2	66.0
23	100B23H	9.840	9.180	1-1/4	3	4-1/2	2	17.2	54	100B54	22.210	21.498	1-1/2	4	6	2-1/2	76.0
24	100B24H	10.250	9.576	1-1/4	3	4-1/2	2	19.2	60	100B60	24.600	23.884	1-1/2	4	6	2-1/2	84.0
25	100B25H	10.650	9.974	1-1/4	3	4-1/2	2	19.5	70	100B70	28.580	27.862	1-1/2	4	6	2-1/2	115.0
26	100B26H	11.050	10.370	1-1/4	3-5/16	5	2	21.7									
27	100B27H	11.440	10.768	1-1/4	3-5/16	5	2	23.0									
28	100B28H	11.840	11.164	1-1/4	3-5/16	5	2	24.4									

H - Denotes hardened teeth.

Maximum bores shown, accommodate standard keyway with setscrew positioned over keyway.

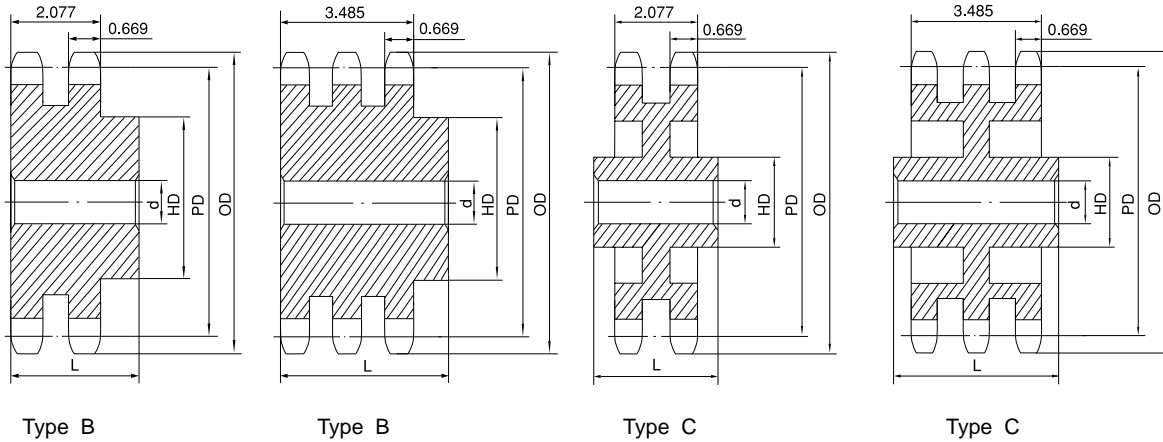
* Hub has recessed groove allowing for chain clearance. GD are as follows:

8 Teeth = 1.752in 9 Teeth = 2.169in 10 Teeth = 2.581in

11 Teeth = 2.991in 12 Teeth = 3.399in

No. 100 STOCK SPROCKETS

1-1/4" Pitch



Double Type B & C

Triple Type B & C

No. of Teeth	OD	PD	Double Type B & C							Triple Type B & C						
			Part No.	Type	d		HD	L	App. Wt. (Lbs.)	Part No.	Type	d		HD	L	App. Wt. (Lbs.)
					Min.	Max.						Min.	Max.			
10	4.600	4.045	D100B10H	B	1	1-7/8	2-3/4*	2-7/8	6.2							
11	5.010	4.438	D100B11H	B	1	2-1/8	3-1/8*	2-7/8	7.9	T100B11H	B	1	2-1/8	3-1/8	4-1/4	11.7
12	5.420	4.830	D100B12H	B	1-1/8	2-1/4	3-3/8*	2-7/8	9.3	T100B12H	B	1-1/8	2-1/4	3-3/8	4-1/4	13.7
13	5.820	5.224	D100B13H	B	1-1/8	2-1/2	3-13/16	2-7/8	11.4	T100B13H	B	1-1/8	2-1/2	3-13/16	4-1/4	16.9
14	6.230	5.618	D100B14H	B	1-1/8	2-3/4	4-3/16	2-7/8	13.6	T100B14H	B	1-1/8	2-3/4	4-3/16	4-1/4	20.2
15	6.630	6.013	D100B15H	B	1-1/4	3-1/8	4-5/8	3-1/8	17.1	T100B15H	B	1-1/4	3-1/8	4-5/8	4-1/2	25.0
16	7.030	6.408	D100B16H	B	1-1/4	3-5/16	5	3-1/8	20.1	T100B16H	B	1-1/4	3-5/16	5	4-1/2	29.3
17	7.440	6.803	D100B17H	B	1-1/4	3-1/2	5-1/4	3-1/8	23.1	T100B17H	B	1-1/4	3-1/2	5-1/4	4-1/2	33.8
18	7.840	7.199	D100B18H	B	1-1/4	3-1/2	5-1/4	3-1/8	25.4	T100B18H	B	1-1/4	3-1/2	5-1/4	4-3/4	38.6
19	8.240	7.595	D100B19H	B	1-1/4	3-3/4	5-1/2	3-3/8	29.6	T100B19H	B	1-1/4	3-3/4	5-1/2	4-3/4	43.3
20	8.640	7.990	D100B20H	B	1-1/4	3-3/4	5-1/2	3-3/8	32.4	T100B20H	B	1-1/4	3-3/4	5-1/2	4-3/4	47.9
21	9.040	8.388	D100B21H	B	1-1/4	3-3/4	5-1/2	3-3/8	35.3	T100B21H	B	1-1/4	3-3/4	5-1/2	4-3/4	52.3
22	9.440	8.784	D100B22	B	1-1/4	3-3/4	5-1/2	3-3/8	38.4	T100B22	B	1-1/4	3-3/4	5-1/2	4-3/4	57.5
23	9.840	9.180	D100B23	B	1-1/4	3-3/4	5-1/2	3-3/8	41.3	T100B23	B	1-1/4	3-3/4	5-1/2	4-3/4	62.5
24	10.250	9.576	D100B24	B	1-1/4	3-3/4	5-3/4	3-3/8	45.1	T100B24	B	1-1/4	3-3/4	5-3/4	4-3/4	69.0
25	10.650	9.974	D100B25	B	1-1/4	3-3/4	5-3/4	3-3/8	48.5	T100B25	B	1-1/4	3-3/4	5-3/4	4-3/4	73.0
26	11.050	10.370	D100B26	B	1-1/2	3-3/4	5-3/4	3-3/8	51.5	T100B26	B	1-1/2	3-13/16	5-3/4	4-3/4	79.0
30	12.640	11.959	D100B30	B	1-1/2	3-3/4	5-3/4	3-3/8	65.0	T100B30	B	1-1/2	3-13/16	5-3/4	4-3/4	103.0
35	14.640	13.945	D100C35	C	1-1/2	3-13/16	6	4-1/4	75.0	T100C35	C	1-1/2	4	6	5	108.0
45	18.630	17.920	D100C45	C	1-1/2	3-13/16	6	4-1/2	103.0	T100C45	C	1-1/2	4	6	5	143.0
60	24.600	23.884	D100C60	C	1-1/2	5-3/8	7-1/2	5	175.0	T100C60	C	1-1/2	5-3/8	7-1/2	5	217.0
70	28.580	27.861	D100C70	C	1-1/2	5-3/8	7-1/2	5	197.0	T100C70	C	1-1/2	5-3/8	7-1/2	5	262.0
80	32.570	31.839	D100C80	C	1-1/2	5-3/8	7-1/2	5	231.0	T100C80	C	1-1/2	5-3/8	7-1/2	5	313.0

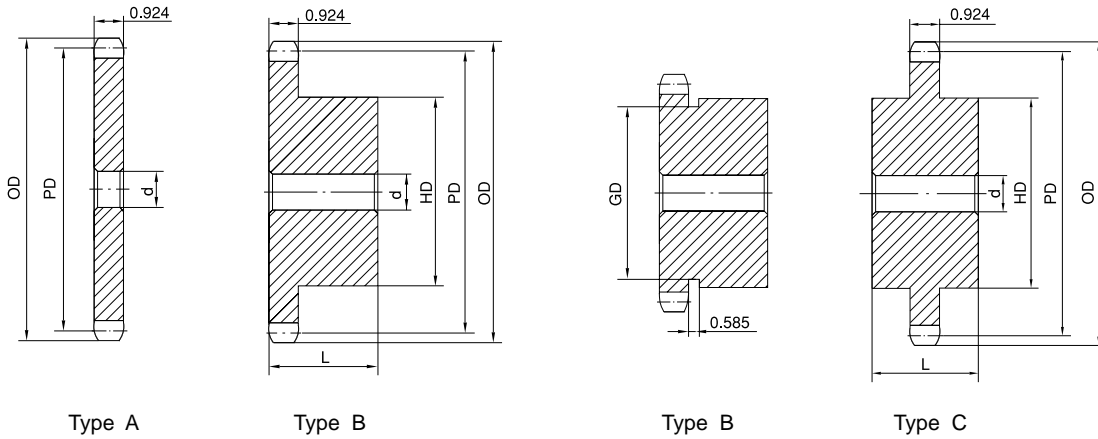
H - Denotes hardened teeth.

Maximum bores shown, accommodate standard keyway with setscrew positioned over keyway.

* Hub has recessed groove allowing for chain clearance. Groove diameters are the same as Single Type B; see page 31.

STOCK SPROCKETS No. 120

1-1/2" Pitch



Single Type A, B & C

No. of Teeth	OD	PD	Type A			Type B						Type C					
			Part No.	d	App. Wt. (Lbs.)	Part No.	d		HD	L	App. Wt. (Lbs.)	Part No.	d		HD	L	App. Wt. (Lbs.)
							Min.	Max.					Min.	Max.			
8	4.520	3.920	120A8H	1-1/4	2.4												
9	5.020	4.386	120A9H	1-1/4	3.0	120B9H	1-3/8	1-13/16	3-3/8*	2-1/4	5.3						
10	5.520	4.854	120A10H	1-1/4	3.8	120B10H	1-3/8	2-1/4	3-3/4*	2-1/4	7.1						
11	6.010	5.325	120A11H	1-1/4	4.8	120B11H	1-3/8	2-3/8	3-9/16	2-1/8	7.6	120C11	1-3/8	2-3/8	3-9/16	3-3/8	12.5
12	6.500	5.796	120A12H	1-1/4	5.8	120B12H	1-3/8	2-3/4	4-1/8	2-1/8	9.9	120C12	1-3/8	2-3/4	4-13/16	3-3/8	14.8
13	6.990	6.269	120A13H	1-1/4	6.7	120B13H	1-3/8	3	4-9/16	2-1/4	12.4	120C13	1-3/8	3	4-5/8	3-3/8	17.2
14	7.470	6.741	120A14H	1-1/4	8.0	120B14H	1-3/8	3-1/4	4-3/4	2-1/4	14.4	120C14	1-3/8	3-1/4	4-3/4	3-3/8	19.5
15	7.960	7.215	120A15H	1-1/4	9.1	120B15H	1-1/4	3-1/4	4-3/4	2-3/8	16.7						
16	8.440	7.689	120A16H	1-1/4	10.6	120B16H	1-1/4	3-1/2	5-1/4	2-3/8	19.9						
17	8.920	8.163	120A17H	1-1/4	12.6	120B17H	1-1/4	3-1/2	5-1/4	2-3/8	20.8						
18	9.410	8.639	120A18H	1-1/4	13.6	120B18H	1-1/4	3-1/2	5-1/4	2-3/8	22.2						
19	9.890	9.114	120A19H	1-1/4	15.1	120B19H	1-1/4	3-1/2	5-1/4	2-3/8	24.8						
20	10.370	9.588	120A20H	1-1/4	16.9	120B20H	1-1/4	3-1/2	5-1/4	2-3/8	25.8						
21	10.850	10.065	120A21H	1-1/4	18.7	120B21H	1-1/4	3-1/2	5-1/4	2-3/8	26.7						
22	11.330	10.541	120A22H	1-1/4	20.0	120B22H	1-1/4	3-1/2	5-1/4	2-3/8	28.2						
23	11.810	11.016	120A23H	1-1/4	22.1	120B23H	1-1/4	3-1/2	5-1/4	2-3/8	30.3						
24	12.290	11.492	120A24H	1-1/4	24.8	120B24H	1-1/4	3-1/2	5-1/4	2-3/8	32.1						
25	12.770	11.969	120A25H	1-1/4	26.8	120B25H	1-1/4	3-1/2	5-1/4	2-3/8	34.6						
26	13.250	12.444	120A26H	1-1/2	28.3	120B26H	1-1/2	4	6	2-1/2	40.0						
27	13.730	12.921	120A27	1-1/2	30.9	120B27	1-1/2	4	6	2-1/2	42.2						
28	14.210	13.397	120A28	1-1/2	33.6	120B28	1-1/2	4	6	2-1/2	44.9						
30	15.170	14.351	120A30	1-1/2	39.0	120B30	1-1/2	4	6	2-1/2	50.2						
32	16.130	15.303	120A32	1-1/2	43.9	120B32	1-1/2	4	6	2-1/2	56.0						
33	16.610	15.780	120A33	1-1/2	48.2	120B33	1-1/2	4	6	2-1/2	58.0						
34	17.090	16.257	120A34	1-1/2	50.0	120B34	1-1/2	4	6	2-1/2	60.2						
35	17.570	16.734	120A35	1-1/2	52.0	120B35	1-1/2	4	6	2-1/2	62.4						
36	18.050	17.211	120A36	1-1/2	56.0	120B36	1-1/2	4	6	2-1/2	66.4						
40	19.960	19.119	120A40	1-1/2	71.0							120C40	1-1/2	4	6	3-3/4	92.0
42	20.920	20.073	120A42	1-1/2	75.0							120C42	1-1/2	4	6	3-3/4	98.0
45	22.350	21.504	120A45	1-1/2	88.0							120C45	1-1/2	4	6	3-3/4	99.2
48	23.790	22.935	120A48	1-1/2	103.0							120C48	1-1/2	4	6	4	113.0
54	26.650	25.797	120A54	1-1/2	140.0							120C54	1-1/2	4	6	4	133.0
60	29.520	28.661	120A60	1-1/2	160.0							120C60	1-1/2	5-1/4	7	4	160.0
70	34.300	33.434	120A70	1-1/2	216.0							120C70	1-1/2	5-3/8	7-1/2	4-1/2	206.0
80	39.080	38.207	120A80	1-1/2	284.0							120C80	1-1/2	5-3/8	7-1/2	4-1/2	254.0
90	43.850	42.981	120A90	1-1/2	358.0												

H - Denotes hardened teeth.

Maximum bores shown, accommodate standard keyway with setscrew positioned over keyway.

* Hub has recessed groove allowing for chain clearance. GD are as follows:

9 Teeth = 2.691in 10 Teeth = 3.104in