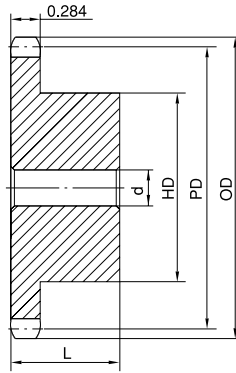
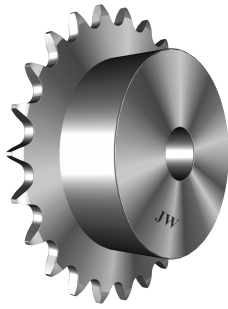
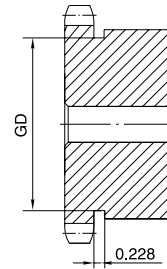


No. 40 STOCK SPROCKETS

1/2" Pitch



Type B



Type B

Single Type B

No. of Teeth	Part No.	OD	PD	d		HD	L	App. Wt. (Lbs.)	No. of Teeth	Part No.	OD	PD	d		HD	L	App. Wt. (Lbs.)
				Min.	Max.								Min.	Max.			
8	40B8H	1.500	1.307	1/2	1/2	31/32*	7/8	0.18	38	40B38	6.330	6.054	5/8	2-1/4	3-1/4	1	3.70
9	40B9H	1.670	1.462	1/2	9/16	1-1/16*	7/8	0.20	39	40B39	6.490	6.214	5/8	2-1/4	3-1/4	1	3.76
10	40B10H	1.840	1.618	1/2	3/4	1-1/4*	7/8	0.27	40	40B40	6.650	6.373	3/4	2-3/8	3-1/2	1-1/8	4.69
11	40B11H	2.000	1.775	1/2	7/8	1-3/8*	7/8	0.35	41	40B41	6.810	6.532	3/4	2-3/8	3-1/2	1-1/8	4.76
12	40B12H	2.170	1.932	1/2	1	1-9/16*	7/8	0.45	42	40B42	6.970	6.691	3/4	2-3/8	3-1/2	1-1/8	4.82
13	40B13H	2.330	2.089	1/2	1-1/16	1-9/16	7/8	0.50	43	40B43	7.130	6.850	3/4	2-3/8	3-1/2	1-1/8	5.12
14	40B14H	2.490	2.247	1/2	1-1/8	1-11/16	7/8	0.59	44	40B44	7.290	7.009	3/4	2-3/8	3-1/2	1-1/8	5.15
15	40B15H	2.650	2.405	1/2	1-1/4	1-13/16	7/8	0.70	45	40B45	7.450	7.168	3/4	2-3/8	3-1/2	1-1/8	5.30
16	40B16H	2.810	2.563	5/8	1-3/8	2	7/8	0.79	46	40B46	7.610	7.327	3/4	2-3/8	3-1/2	1-1/8	5.44
17	40B17H	2.980	2.721	5/8	1-7/16	2-1/8	1	1.04	47	40B47	7.770	7.486	3/4	2-3/8	3-1/2	1-1/8	5.59
18	40B18H	3.140	2.879	5/8	1-1/2	2-5/16	1	1.22	48	40B48	7.930	7.645	3/4	2-3/8	3-1/2	1-1/8	5.74
19	40B19H	3.300	3.038	5/8	1-3/4	2-1/2	1	1.43	49	40B49	8.090	7.804	3/4	2-3/8	3-1/2	1-1/8	5.90
20	40B20H	3.460	3.196	5/8	1-7/8	2-5/8	1	1.56	50	40B50	8.250	7.963	3/4	2-3/8	3-1/2	1-1/8	5.96
21	40B21H	3.620	3.355	5/8	1-7/8	2-3/4	1	1.73	51	40B51	8.410	8.122	3/4	2-3/8	3-1/2	1-1/8	6.08
22	40B22H	3.780	3.513	5/8	1-7/8	2-7/8	1	1.96	52	40B52	8.570	8.281	3/4	2-3/8	3-1/2	1-1/8	6.28
23	40B23H	3.940	3.672	5/8	2	3	1	2.13	53	40B53	8.730	8.440	3/4	2-3/8	3-1/2	1-1/8	6.33
24	40B24H	4.100	3.831	5/8	2-1/4	3-1/4	1	2.41	54	40B54	8.890	8.599	3/4	2-3/8	3-1/2	1-1/8	6.42
25	40B25H	4.260	3.989	5/8	2-1/4	3-1/4	1	2.54	55	40B55	9.040	8.758	3/4	2-3/8	3-1/2	1-1/8	6.56
26	40B26H	4.420	4.148	5/8	2-1/4	3-1/4	1	2.58	56	40B56	9.200	8.917	3/4	2-3/8	3-1/2	1-1/8	6.89
27	40B27H	4.580	4.307	5/8	2-1/4	3-1/4	1	2.66	57	40B57	9.360	9.076	3/4	2-3/8	3-1/2	1-1/8	7.02
28	40B28H	4.740	4.466	5/8	2-1/4	3-1/4	1	2.73	58	40B58	9.520	9.236	3/4	2-3/8	3-1/2	1-1/8	7.36
29	40B29H	4.900	4.624	5/8	2-1/4	3-1/4	1	2.80	59	40B59	9.680	9.395	3/4	2-3/8	3-1/2	1-1/8	7.45
30	40B30H	5.060	4.783	5/8	2-1/4	3-1/4	1	2.98	60	40B60	9.840	9.554	3/4	2-3/8	3-1/2	1-1/8	7.86
31	40B31H	5.220	4.942	5/8	2-1/4	3-1/4	1	3.10	65	40B65	10.630	10.349	3/4	2-3/4	4	1-1/4	9.40
32	40B32H	5.380	5.101	5/8	2-1/4	3-1/4	1	3.16	70	40B70	11.430	11.145	3/4	2-3/4	4	1-1/4	11.00
33	40B33H	5.540	5.260	5/8	2-1/4	3-1/4	1	3.22	72	40B72	11.750	11.463	3/4	2-3/4	4	1-1/4	11.50
34	40B34H	5.700	5.419	5/8	2-1/4	3-1/4	1	3.30	80	40B80	13.030	12.736	3/4	2-3/4	4	1-1/4	13.40
35	40B35H	5.860	5.578	5/8	2-1/4	3-1/4	1	3.46	84	40B84	13.660	13.372	3/4	2-3/4	4	1-1/4	14.04
36	40B36H	6.020	5.737	5/8	2-1/4	3-1/4	1	3.58	96	40B96	15.570	15.281	1	2-3/4	4	1-1/4	17.56
37	40B37	6.180	5.896	5/8	2-1/4	3-1/4	1	3.62	112	40B112	18.120	17.828	1	2-3/4	4	1-1/4	22.56

H - Denotes hardened teeth.

Maximum bores shown, accommodate standard keyway with setscrew positioned over keyway.

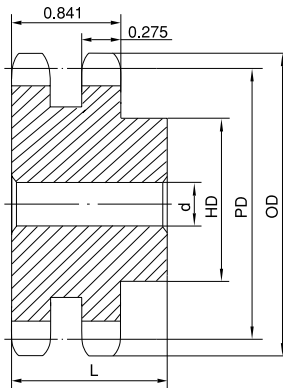
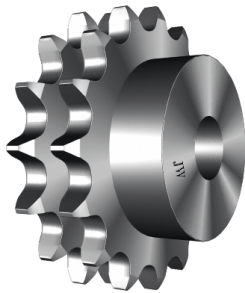
* Hub has recessed groove allowing for chain clearance. GD are as follows:

8 Teeth = 0.683in 9 Teeth = 0.850in 10 Teeth = 1.015in

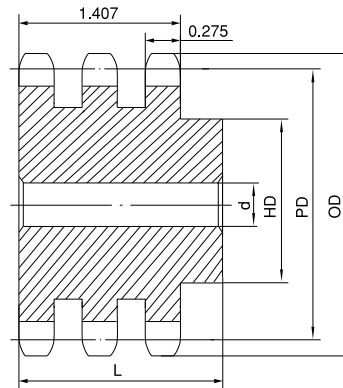
11 Teeth = 1.179in 12 Teeth = 1.342in

STOCK SPROCKETS No. 40

1/2" Pitch



Type B



Type B

Double Type B

Triple Type B

No. of Teeth	OD	PD	Double Type B							Triple Type B						
			Part No.	Type	d		HD	L	App. Wt. (Lbs.)	Part No.	Type	d		HD	L	App. Wt. (Lbs.)
					Min.	Max.						Min.	Max.			
11	2.000	1.775	D40B11H	B	1/2	3/4	1-7/16*	1-1/2	0.62	T40B11H	B	1/2	3/4	1-7/16	2-1/8	0.80
12	2.170	1.932	D40B12H	B	1/2	15/16	1-9/16*	1-1/2	0.76	T40B12H	B	1/2	15/16	1-9/16	2-1/8	1.10
13	2.330	2.089	D40B13H	B	1/2	1	1-1/2	1-1/2	0.86	T40B13H	B	1/2	1	1-1/2	2-1/8	1.24
14	2.490	2.247	D40B14H	B	1/2	1-1/8	1-11/16	1-1/2	1.08	T40B14H	B	1/2	1-1/8	1-11/16	2-1/8	1.50
15	2.650	2.405	D40B15H	B	1/2	1-1/4	1-13/16	1-1/2	1.24	T40B15H	B	1/2	1-1/4	1-13/16	2-1/8	1.76
16	2.810	2.563	D40B16H	B	5/8	1-3/8	2	1-1/2	1.42	T40B16H	B	5/8	1-3/8	2	2-1/8	2.04
17	2.980	2.721	D40B17H	B	5/8	1-7/16	2-1/8	1-1/2	1.64	T40B17H	B	5/8	1-7/16	2-1/8	2-1/8	2.34
18	3.140	2.879	D40B18H	B	5/8	1-1/2	2-5/16	1-1/2	1.92	T40B18H	B	5/8	1-1/2	2-5/16	2-1/8	2.72
19	3.300	3.038	D40B19H	B	5/8	1-3/4	2-1/2	1-1/2	2.22	T40B19H	B	5/8	1-3/4	2-1/2	2-1/8	3.10
20	3.460	3.196	D40B20H	B	5/8	1-7/8	2-5/8	1-5/8	2.64	T40B20H	B	5/8	1-7/8	2-5/8	2-1/4	3.72
21	3.620	3.355	D40B21H	B	5/8	1-7/8	2-3/4	1-5/8	2.94	T40B21H	B	5/8	1-7/8	2-3/4	2-1/4	4.06
22	3.780	3.513	D40B22H	B	5/8	1-7/8	2-7/8	1-5/8	3.18	T40B22H	B	5/8	1-7/8	2-7/8	2-1/4	4.52
23	3.940	3.672	D40B23H	B	5/8	2	3	1-5/8	3.52	T40B23H	B	5/8	2	3	2-1/4	4.96
24	4.100	3.831	D40B24H	B	5/8	2-1/4	3-1/4	1-5/8	4.04	T40B24H	B	5/8	2-1/4	3-1/4	2-1/4	5.64
25	4.260	3.989	D40B25H	B	5/8	2-1/4	3-1/4	1-5/8	4.26	T40B25H	B	5/8	2-1/4	3-1/4	2-1/4	6.02
26	4.420	4.148	D40B26	B	5/8	2-1/4	3-1/4	1-5/8	4.48	T40B26	B	5/8	2-1/4	3-1/4	2-1/4	6.36
30	5.060	4.783	D40B30	B	7/8	2-1/4	3-1/4	1-5/8	5.34	T40B30	B	7/8	2-1/4	3-1/4	2-1/4	7.84
35	5.860	5.578	D40B35	B	7/8	2-1/4	3-1/4	1-5/8	6.80	T40B35	B	7/8	2-1/4	3-1/4	2-1/4	10.30
36	6.020	5.737	D40B36	B	15/16	2-1/2	3-3/4	1-5/8	7.20	T40B36	B	15/16	2-1/2	3-3/4	2-3/8	11.72
40	6.650	6.373	D40B40	B	15/16	2-1/2	3-3/4	1-3/4	9.40							
42	6.970	6.691	D40B42	B	15/16	2-1/2	3-3/4	1-3/4	10.20	T40B42	B	15/16	2-1/2	3-3/4	2-3/8	15.36
45	7.450	7.168	D40B45	B	15/16	2-1/2	3-3/4	1-3/4	11.36							
48	7.930	7.645	D40B48	B	15/16	2-1/2	3-3/4	1-3/4	12.66	T40B48	B	15/16	2-1/2	3-3/4	2-3/8	19.36
52	8.570	8.281	D40B52	B	15/16	2-1/2	3-3/4	1-3/4	14.46	T40B52	B	15/16	2-1/2	3-3/4	2-3/8	22.44
54	8.890	8.599	D40B54	B	15/16	2-1/2	3-3/4	1-3/4	15.48							
60	9.840	9.554	D40B60	B	15/16	2-1/2	3-3/4	1-3/4	18.60	T40B60	B	15/16	2-1/2	3-3/4	2-3/8	30.02
68	11.120	10.826	D40B68	B	1-3/16	2-3/4	4-1/4	2-1/8	24.96	T40B68	B	1-3/16	2-3/4	4	2-5/8	38.44
72	11.750	11.463	D40B72	B	1-3/16	2-3/4	4-1/4	2-1/8	27.88	T40B72	B	1-3/16	2-3/4	4	2-5/8	42.46
76	12.390	12.099	D40B76	B	1-3/16	2-3/4	4-1/4	2-1/8	30.18	T40B76	B	1-3/16	2-3/4	4	2-5/8	46.90
84	13.660	13.372	D40B84	B	1-3/16	2-3/4	4-1/4	2-1/8	36.24	T40B84	B	1-3/16	2-3/4	4-1/4	2-3/4	57.30
95	15.410	15.122	D40B95	B	1-3/16	2-3/4	4-1/4	2-1/8	38.84	T40B95	B	1-3/16	2-3/4	4-1/4	2-3/4	62.18
96	15.570	15.281	D40B96	B	1-3/16	2-3/4	4-1/4	2-1/8	39.50							
102	16.530	16.236	D40B102	B	1-3/16	2-3/4	4-1/4	2-1/8	42.72	T40B102	B	1-3/16	2-3/4	4-1/4	2-3/4	68.40
112	18.120	17.828	D40B112	B	1-3/16	2-3/4	4-1/4	2-1/8	55.54							

H - Denotes hardened teeth.

Maximum bores shown, accommodate standard keyway with setscrew positioned over keyway.

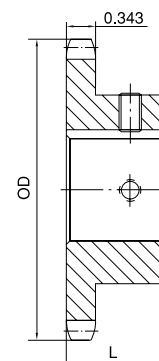
* Hub has recessed groove allowing for chain clearance. Groove depth is the same as Single Type B; see page 14.

No. 50 FINISHED BORE

5/8" Pitch

Single Type BS

No. of Teeth	Part No.	OD	L	App. Wt. (Lbs.)	Finished Bores (Includes Keyway and 2 Setscrews)
9	50BS9H	2.090	1	0.45	5/8 3/4
10	50BS10H	2.300	1	0.50	5/8 3/4 7/8 +1
11	50BS11H	2.500	1	0.60	5/8 3/4 7/8 1
12	50BS12H	2.710	1	0.70	5/8 3/4 7/8 1 1-1/8 1-3/16 1-1/4
13	50BS13H	2.910	1	0.80	5/8 3/4 7/8 1 1-1/8 1-3/16 1-1/4
14	50BS14H	3.110	1	1.00	5/8 3/4 7/8 1 1-1/8 1-3/16 1-1/4
15	50BS15H	3.320	1	1.20	5/8 3/4 7/8 1 1-1/8 1-3/16 1-1/4 1-3/8 1-7/16 1-1/2
16	50BS16H	3.520	1	1.45	5/8 3/4 7/8 1 1-1/8 1-3/16 1-1/4 1-3/8 1-7/16 1-1/2 1-5/8
17	50BS17H	3.720	1	1.60	5/8 3/4 7/8 1 1-1/8 1-3/16 1-1/4 1-3/8 1-7/16 1-1/2 1-5/8
18	50BS18H	3.920	1	1.90	5/8 3/4 7/8 1 1-1/8 1-3/16 1-1/4 1-3/8 1-7/16 1-1/2 1-5/8
19	50BS19H	4.120	1	2.00	5/8 3/4 7/8 1 1-1/8 1-3/16 1-1/4 1-3/8 1-7/16 1-1/2 1-5/8
20	50BS20H	4.320	1	2.10	3/4 7/8 1 1-1/8 1-3/16 1-1/4 1-3/8 1-7/16 1-1/2 1-5/8
21	50BS21H	4.520	1	2.25	3/4 7/8 1 1-1/8 1-3/16 1-1/4 1-3/8 1-7/16 1-1/2
22	50BS22H	4.720	1	2.40	3/4 7/8 1 1-1/8 1-3/16 1-1/4 1-3/8 1-7/16 1-1/2
23	50BS23H	4.920	1	2.50	3/4 7/8 1 1-1/8 1-3/16 1-1/4 1-3/8 1-7/16 1-1/2
24	50BS24H	5.120	1-1/4	3.00	3/4 7/8 1 1-1/8 1-3/16 1-1/4 1-3/8 1-7/16 1-1/2
25	50BS25H	5.320	1-1/4	3.10	3/4 7/8 1 1-1/8 1-3/16 1-1/4 1-3/8 1-7/16 1-1/2
26	50BS26H	5.520	1-1/4	3.30	3/4 7/8 1 1-1/8 1-3/16 1-1/4 1-3/8 1-7/16 1-1/2
27	50BS27H	5.720	1-1/4	3.46	3/4 7/8 1 1-1/8 1-3/16 1-1/4 1-3/8 1-7/16 1-1/2
28	50BS28H	5.920	1-1/4	3.60	3/4 7/8 1 1-1/8 1-3/16 1-1/4 1-3/8 1-7/16 1-1/2
29	50BS29H	6.120	1-1/4	3.78	3/4 7/8 1 1-1/8 1-3/16 1-1/4 1-3/8 1-7/16 1-1/2
30	50BS30H	6.320	1-1/4	3.90	3/4 7/8 1 1-1/8 1-3/16 1-1/4 1-3/8 1-7/16 1-1/2
31	50BS31H	6.520	1-1/4	4.46	3/4 7/8 1 1-1/8 1-3/16 1-1/4 1-3/8 1-7/16 1-1/2 1-3/4 1-15/16
32	50BS32H	6.720	1-1/4	4.70	3/4 7/8 1 1-1/8 1-3/16 1-1/4 1-3/8 1-7/16 1-1/2 1-3/4 1-15/16
33	50BS33H	6.920	1-1/4	4.92	3/4 7/8 1 1-1/8 1-3/16 1-1/4 1-3/8 1-7/16 1-1/2 1-3/4 1-15/16
34	50BS34H	7.120	1-1/4	5.06	3/4 7/8 1 1-1/8 1-3/16 1-1/4 1-3/8 1-7/16 1-1/2 1-3/4 1-15/16
35	50BS35H	7.320	1-1/4	5.30	3/4 7/8 1 1-1/8 1-3/16 1-1/4 1-3/8 1-7/16 1-1/2 1-3/4 1-15/16
36	50BS36H	7.520	1-1/4	5.50	3/4 7/8 1 1-1/8 1-3/16 1-1/4 1-3/8 1-7/16 1-1/2 1-3/4 1-15/16
37	50BS37	7.720	1-1/4	5.62	3/4 7/8 1 1-1/8 1-3/16 1-1/4 1-3/8 1-7/16 1-1/2 1-3/4 1-15/16
38	50BS38	7.920	1-1/4	5.80	3/4 7/8 1 1-1/8 1-3/16 1-1/4 1-3/8 1-7/16 1-1/2 1-3/4 1-15/16
39	50BS39	8.120	1-1/4	6.02	3/4 7/8 1 1-1/8 1-3/16 1-1/4 1-3/8 1-7/16 1-1/2 1-3/4 1-15/16
40	50BS40	8.320	1-1/4	6.20	3/4 7/8 1 1-1/8 1-3/16 1-1/4 1-3/8 1-7/16 1-1/2 1-3/4 1-15/16
41	50BS41	8.520	1-1/4	6.45	3/4 7/8 1 1-1/8 1-3/16 1-1/4 1-3/8 1-7/16 1-1/2 1-3/4 1-15/16
42	50BS42	8.720	1-1/4	6.68	3/4 7/8 1 1-1/8 1-3/16 1-1/4 1-3/8 1-7/16 1-1/2 1-3/4 1-15/16
43	50BS43	8.910	1-1/4	6.79	3/4 7/8 1 1-1/8 1-3/16 1-1/4 1-3/8 1-7/16 1-1/2 1-3/4 1-15/16
44	50BS44	9.110	1-1/4	7.30	3/4 7/8 1 1-1/8 1-3/16 1-1/4 1-3/8 1-7/16 1-1/2 1-3/4 1-15/16
45	50BS45	9.310	1-1/4	8.00	3/4 7/8 1 1-1/8 1-3/16 1-1/4 1-3/8 1-7/16 1-1/2 1-3/4 1-15/16
46	50BS46	9.510	1-1/4	8.51	1 1-1/8 1-3/16 1-1/4 1-3/8 1-7/16 1-1/2 1-3/4 1-15/16
47	50BS47	9.710	1-1/4	8.76	1 1-1/8 1-3/16 1-1/4 1-3/8 1-7/16 1-1/2 1-3/4 1-15/16
48	50BS48	9.910	1-1/4	9.03	1 1-1/8 1-3/16 1-1/4 1-3/8 1-7/16 1-1/2 1-3/4 1-15/16
49	50BS49	10.110	1-1/4	9.33	1 1-1/8 1-3/16 1-1/4 1-3/8 1-7/16 1-1/2 1-3/4 1-15/16
50	50BS50	10.310	1-1/4	9.63	1 1-1/8 1-3/16 1-1/4 1-3/8 1-7/16 1-1/2 1-3/4 1-15/16
51	50BS51	10.510	1-1/4	9.81	1 1-1/8 1-3/16 1-1/4 1-3/8 1-7/16 1-1/2 1-3/4 1-15/16
52	50BS52	10.710	1-1/4	9.99	1 1-1/8 1-3/16 1-1/4 1-3/8 1-7/16 1-1/2 1-3/4 1-15/16
53	50BS53	10.910	1-1/4	10.37	1 1-1/8 1-3/16 1-1/4 1-3/8 1-7/16 1-1/2 1-3/4 1-15/16
54	50BS54	11.110	1-1/4	10.75	1 1-1/8 1-3/16 1-1/4 1-3/8 1-7/16 1-1/2 1-3/4 1-15/16
55	50BS55	11.310	1-1/4	11.08	1 1-1/8 1-3/16 1-1/4 1-3/8 1-7/16 1-1/2 1-3/4 1-15/16
56	50BS56	11.500	1-1/4	11.41	1 1-1/8 1-3/16 1-1/4 1-3/8 1-7/16 1-1/2 1-3/4 1-15/16
57	50BS57	11.700	1-1/4	11.75	1 1-1/8 1-3/16 1-1/4 1-3/8 1-7/16 1-1/2 1-3/4 1-15/16
58	50BS58	11.900	1-1/4	12.08	1 1-1/8 1-3/16 1-1/4 1-3/8 1-7/16 1-1/2 1-3/4 1-15/16
59	50BS59	12.100	1-1/4	12.41	1 1-1/8 1-3/16 1-1/4 1-3/8 1-7/16 1-1/2 1-3/4 1-15/16
60	50BS60	12.300	1-1/4	13.50	1 1-1/8 1-3/16 1-1/4 1-3/8 1-7/16 1-1/2 1-3/4 1-15/16
70	50BS70	14.290	1-3/4	17.81	1 1-1/8 1-3/16 1-1/4 1-3/8 1-7/16 1-1/2 1-3/4 1-15/16
72	50BS72	14.690	1-3/4	19.13	1 1-1/8 1-3/16 1-1/4 1-3/8 1-7/16 1-1/2 1-3/4 1-15/16
80	50BS80	16.280	1-3/4	24.39	1 1-1/8 1-3/16 1-1/4 1-3/8 1-7/16 1-1/2 1-3/4 1-15/16
84	50BS84	17.080	1-3/4	25.15	1 1-1/8 1-3/16 1-1/4 1-3/8 1-7/16 1-1/2 1-3/4 1-15/16
96	50BS96	19.470	1-3/4	32.57	1 1-1/8 1-3/16 1-1/4 1-3/8 1-7/16 1-1/2 1-3/4 1-15/16
112	50BS112	22.650	1-3/4	41.46	1 1-1/8 1-3/16 1-1/4 1-3/8 1-7/16 1-1/2 1-3/4 1-15/16

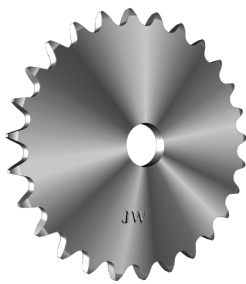


Type BS

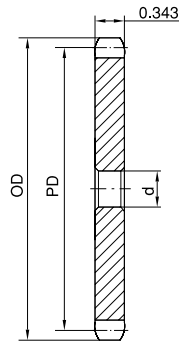
H - Denotes hardened teeth.
 + - Indicates single setscrew at 90° of keyway.
 Larger bore sizes require hubs of greater diameter.
 Keyway centered on line of tooth.

STOCK SPROCKETS No. 50

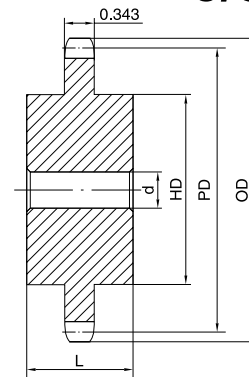
5/8" Pitch



Single Type A



Type A



Type C

No. of Teeth	Part No.	OD	PD	d	App. Wt. (Lbs.)	No. of Teeth	Part No.	OD	PD	d	App. Wt. (Lbs.)
10	50A10H	2.300	2.023	13/32	0.28	40	50A40	8.320	7.966	23/32	4.46
11	50A11H	2.500	2.219	13/32	0.31	41	50A41	8.520	8.165	23/32	4.86
12	50A12H	2.710	2.415	5/8	0.34	42	50A42	8.720	8.363	23/32	4.98
13	50A13H	2.910	2.612	5/8	0.42	43	50A43	8.910	8.562	23/32	5.24
14	50A14H	3.110	2.809	5/8	0.50	44	50A44	9.110	8.761	23/32	5.42
15	50A15H	3.320	3.006	5/8	0.54	45	50A45	9.310	8.960	23/32	5.92
16	50A16H	3.520	3.204	5/8	0.68	46	50A46	9.510	9.159	15/16	6.42
17	50A17H	3.720	3.401	5/8	0.76	47	50A47	9.710	9.357	15/16	6.50
18	50A18H	3.920	3.599	5/8	0.86	48	50A48	9.910	9.556	15/16	6.58
19	50A19H	4.120	3.797	5/8	0.94	49	50A49	10.110	9.755	15/16	7.06
20	50A20H	4.320	3.995	3/4	1.06	50	50A50	10.310	9.954	15/16	7.10
21	50A21H	4.520	4.194	3/4	1.12	51	50A51	10.510	10.153	15/16	7.32
22	50A22H	4.720	4.392	3/4	1.30	52	50A52	10.710	10.351	15/16	7.98
23	50A23H	4.920	4.590	3/4	1.44	53	50A53	10.910	10.550	15/16	8.08
24	50A24H	5.120	4.788	23/32	1.50	54	50A54	11.110	10.749	15/16	8.30
25	50A25H	5.320	4.987	23/32	1.62	55	50A55	11.310	10.948	15/16	8.56
26	50A26H	5.520	5.185	23/32	1.72	56	50A56	11.500	11.147	15/16	8.90
27	50A27H	5.720	5.384	23/32	1.96	57	50A57	11.700	11.346	15/16	9.38
28	50A28H	5.920	5.582	23/32	2.04	58	50A58	11.900	11.544	15/16	10.30
29	50A29H	6.120	5.781	23/32	2.36	59	50A59	12.100	11.743	15/16	10.50
30	50A30H	6.320	5.979	23/32	2.54	60	50A60	12.300	11.942	15/16	10.80
31	50A31H	6.520	6.178	23/32	2.80	65	50A65	13.300	12.936	15/16	10.90
32	50A32H	6.720	6.376	23/32	2.92	70	50A70	14.290	13.931	15/16	14.00
33	50A33H	6.920	6.575	23/32	3.14	72	50A72	14.690	14.329	15/16	15.24
34	50A34H	7.120	6.774	23/32	3.20	76	50A76	15.490	15.124	15/16	20.08
35	50A35H	7.320	6.972	23/32	3.34	80	50A80	16.280	15.920	15/16	21.00
36	50A36H	7.520	7.171	23/32	3.82	84	50A84	17.080	16.715	15/16	22.08
37	50A37	7.720	7.370	23/32	3.98	95	50A95	19.270	18.903	15/16	27.00
38	50A38	7.920	7.569	23/32	4.14	96	50A96	19.470	19.102	15/16	27.40
39	50A39	8.120	7.767	23/32	4.42	112	50A112	22.650	22.285	15/16	37.70

Single Type C

No. of Teeth	Part No.	OD	PD	d		HD	L	App. Wt. (Lbs.)
				Min.	Max.			
12	50C12	2.710	2.415	5/8	1-1/4	2*	1-5/8	1.25
13	50C13	2.910	2.612	5/8	1-5/16	1-7/8*	1-5/8	1.47
14	50C14	3.110	2.809	5/8	1-7/16	2-1/8*	1-5/8	1.69
15	50C15	3.320	3.006	5/8	1-1/2	2-3/8*	1-5/8	1.94
16	50C16	3.520	3.204	5/8	1-3/4	2-1/2	1-5/8	2.42
17	50C17	3.720	3.401	5/8	1-7/8	2-47/64	1-5/8	2.75
18	50C18	3.920	3.599	5/8	1-7/8	2-15/16	1-5/8	3.25
19	50C19	4.120	3.797	3/4	2	3-5/64	1-5/8	3.87
20	50C20	4.320	3.995	3/4	2	3	1-5/8	4.40

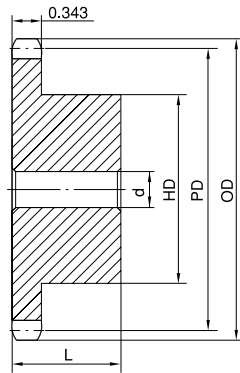
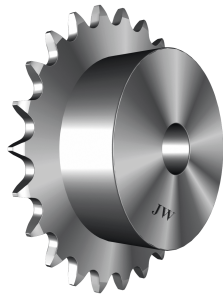
H - Denotes hardened teeth.

Maximum bores shown, accommodate standard keyway with setscrew positioned over keyway.

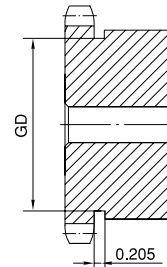
* Hub has recessed groove allowing for chain clearance. Groove depth is the same as Single Type B; see page 18.

No. 50 STOCK SPROCKETS

5/8" Pitch



Type B



Type B

Single Type B

No. of Teeth	Part No.	OD	PD	d		HD	L	App. Wt. (Lbs.)	No. of Teeth	Part No.	OD	PD	d		HD	L	App. Wt. (Lbs.)
				Min.	Max.								Min.	Max.			
8	50B8H	1.880	1.633	5/8	5/8	1-1/8*	1	0.25	40	50B40	8.320	7.966	3/4	2-1/4	3-1/4	1-1/4	6.50
9	50B9H	2.090	1.827	5/8	3/4	1-3/8*	1	0.36	41	50B41	8.520	8.165	3/4	2-1/4	3-1/4	1-1/4	6.64
10	50B10H	2.300	2.023	5/8	7/8	1-9/16*	1	0.48	42	50B42	8.720	8.363	3/4	2-1/4	3-1/4	1-1/4	6.96
11	50B11H	2.500	2.219	5/8	1	1-3/4*	1	0.64	43	50B43	8.910	8.562	3/4	2-1/4	3-1/4	1-1/4	7.06
12	50B12H	2.710	2.415	5/8	1-1/4	1-63/64*	1	0.83	44	50B44	9.110	8.761	3/4	2-1/4	3-1/4	1-1/4	7.58
13	50B13H	2.910	2.612	5/8	1-5/16	1-7/8	1	0.88	45	50B45	9.310	8.960	3/4	2-1/2	3-3/4	1-1/4	8.08
14	50B14H	3.110	2.809	5/8	1-7/16	2-1/8	1	1.13	46	50B46	9.510	9.159	3/4	2-1/2	3-3/4	1-1/4	8.22
15	50B15H	3.320	3.006	5/8	1-1/2	2-3/8	1	1.34	47	50B47	9.710	9.357	3/4	2-1/2	3-3/4	1-1/4	8.48
16	50B16H	3.520	3.204	5/8	1-3/4	2-1/2	1	1.51	48	50B48	9.910	9.556	1	2-1/2	3-3/4	1-1/4	9.28
17	50B17H	3.720	3.401	5/8	1-7/8	2-11/16	1	1.74	49	50B49	10.110	9.755	1	2-1/2	3-3/4	1-1/4	9.52
18	50B18H	3.920	3.599	5/8	1-7/8	2-7/8	1	2.00	50	50B50	10.310	9.954	1	2-1/2	3-3/4	1-1/4	9.78
19	50B19H	4.120	3.797	5/8	2	3	1	2.22	51	50B51	10.510	10.153	1	2-1/2	3-3/4	1-1/4	10.00
20	50B20H	4.320	3.995	3/4	2	3	1	2.28	52	50B52	10.710	10.351	1	2-1/2	3-3/4	1-1/4	10.24
21	50B21H	4.520	4.194	3/4	2	3	1	2.40	53	50B53	10.910	10.550	1	2-1/2	3-3/4	1-1/4	10.48
22	50B22H	4.720	4.392	3/4	2	3	1	2.56	54	50B54	11.110	10.749	1	2-1/2	3-3/4	1-1/4	10.80
23	50B23H	4.920	4.590	3/4	2	3	1	2.66	55	50B55	11.310	10.948	1	2-1/2	3-3/4	1-1/4	11.00
24	50B24H	5.120	4.788	3/4	2	3	1-1/4	3.30	56	50B56	11.500	11.147	1	2-1/2	3-3/4	1-1/4	11.40
25	50B25H	5.320	4.987	3/4	2	3	1-1/4	3.40	57	50B57	11.700	11.346	1	2-1/2	3-3/4	1-1/4	11.70
26	50B26H	5.520	5.185	3/4	2	3	1-1/4	3.44	58	50B58	11.900	11.544	1	2-1/2	3-3/4	1-1/4	12.00
27	50B27H	5.720	5.384	3/4	2	3	1-1/4	3.74	59	50B59	12.100	11.743	1	2-1/2	3-3/4	1-1/4	12.32
28	50B28H	5.920	5.582	3/4	2	3	1-1/4	3.80	60	50B60	12.300	11.942	1	2-1/2	3-3/4	1-1/4	13.00
29	50B29H	6.120	5.781	3/4	2	3	1-1/4	4.06	65	50B65	13.300	12.936	1	2-1/2	3-3/4	1-3/4	15.50
30	50B30H	6.320	5.979	3/4	2-1/4	3-1/4	1-1/4	4.56	70	50B70	14.290	13.931	1	2-1/2	3-3/4	1-3/4	18.16
31	50B31H	6.520	6.178	3/4	2-1/4	3-1/4	1-1/4	4.74	72	50B72	14.690	14.329	1	2-1/2	3-3/4	1-3/4	19.48
32	50B32H	6.720	6.376	3/4	2-1/4	3-1/4	1-1/4	4.96	76	50B76	15.486	15.124	1	2-1/2	3-3/4	1-3/4	21.00
33	50B33H	6.920	6.575	3/4	2-1/4	3-1/4	1-1/4	5.14	80	50B80	16.280	15.920	1	2-3/4	4-1/4	1-3/4	24.74
34	50B34H	7.120	6.774	3/4	2-1/4	3-1/4	1-1/4	5.29	84	50B84	17.080	16.715	1	2-3/4	4-1/4	1-3/4	25.50
35	50B35H	7.320	6.972	3/4	2-1/4	3-1/4	1-1/4	5.44	90	50B90	18.270	17.909	1	2-3/4	4-1/4	1-3/4	29.00
36	50B36H	7.520	7.171	3/4	2-1/4	3-1/4	1-1/4	5.64	95	50B95	19.270	18.903	1	2-3/4	4-1/4	1-3/4	32.00
37	50B37	7.720	7.370	3/4	2-1/4	3-1/4	1-1/4	5.90	96	50B96	19.470	19.102	1	2-3/4	4-1/4	1-3/4	32.92
38	50B38	7.920	7.569	3/4	2-1/4	3-1/4	1-1/4	6.08	102	50B102	20.660	20.295	1	2-3/4	4-1/4	1-3/4	36.30
39	50B39	8.120	7.767	3/4	2-1/4	3-1/4	1-1/4	6.30	112	50B112	22.650	22.285	1	2-3/4	4-1/4	1-3/4	42.00

H - Denotes hardened teeth.

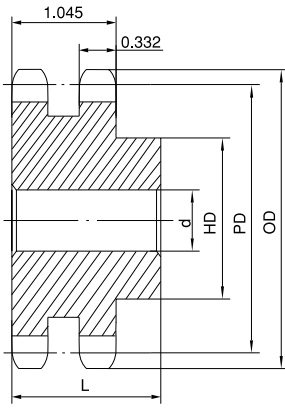
Maximum bores shown, accommodate standard keyway with setscrew positioned over keyway.

* Hub has recessed groove allowing for chain clearance. GD are as follows:

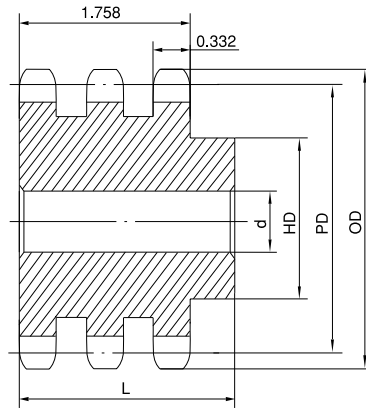
8 Teeth = 0.861in 9 Teeth = 1.069in 10 Teeth = 1.276in
 11 Teeth = 1.469in 12 Teeth = 1.685in

STOCK SPROCKETS No. 50

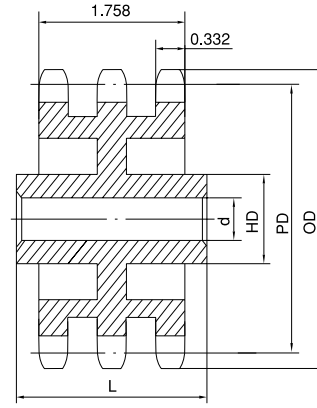
5/8" Pitch



Type B



Type B



Type C

Double Type B

Triple Type B & C

No. of Teeth	OD	PD	Double Type B							Triple Type B & C						
			Part No.	Type	d		HD	L	App. Wt. (Lbs.)	Part No.	Type	d		HD	L	App. Wt. (Lbs.)
					Min.	Max.						Min.	Max.			
11	2.500	2.219	D50B11H	B	5/8	15/16	1-15/32	1-3/4	0.96	T50B11H	B	5/8	15/16	1-15/32	2-1/2	1.42
12	2.710	2.415	D50B12H	B	5/8	1-1/8	1-11/16	1-3/4	1.25	T50B12H	B	5/8	1-1/8	1-11/16	2-1/2	1.84
13	2.910	2.612	D50B13H	B	5/8	1-5/16	1-7/8	1-3/4	1.56	T50B13H	B	5/8	1-5/16	1-7/8	2-1/2	2.28
14	3.110	2.809	D50B14H	B	5/8	1-3/8	2-1/16	1-3/4	1.86	T50B14H	B	5/8	1-3/8	2-1/16	2-1/2	2.72
15	3.320	3.006	D50B15H	B	3/4	1-1/2	2-5/16	1-3/4	2.22	T50B15H	B	3/4	1-1/2	2-5/16	2-1/2	3.24
16	3.520	3.204	D50B16H	B	3/4	1-3/4	2-1/2	1-3/4	2.62	T50B16H	B	3/4	1-3/4	2-1/2	2-1/2	3.76
17	3.720	3.401	D50B17H	B	3/4	1-7/8	2-11/16	1-3/4	3.04	T50B17H	B	3/4	1-7/8	2-11/16	2-1/2	4.38
18	3.920	3.599	D50B18H	B	3/4	1-15/16	2-15/16	1-3/4	3.58	T50B18H	B	3/4	1-15/16	2-15/16	2-1/2	5.10
19	4.120	3.797	D50B19H	B	1	2-1/8	3-1/8	1-3/4	3.90	T50B19H	B	1	2-1/8	3-1/8	2-1/2	5.60
20	4.320	3.995	D50B20H	B	1	2-1/4	3-1/4	1-3/4	4.26	T50B20H	B	1	2-1/4	3-1/4	2-5/8	6.42
21	4.520	4.194	D50B21H	B	1	2-3/8	3-1/2	1-3/4	4.90	T50B21H	B	1	2-3/8	3-1/2	2-5/8	7.42
22	4.720	4.392	D50B22H	B	1	2-3/8	3-9/16	1-7/8	5.58	T50B22H	B	1	2-3/8	3-9/16	2-5/8	7.92
23	4.920	4.590	D50B23H	B	1	2-1/2	3-5/8	1-7/8	6.10	T50B23H	B	1	2-1/2	3-5/8	2-5/8	8.80
24	5.120	4.788	D50B24H	B	1	2-1/2	3-5/8	1-7/8	6.50	T50B24H	B	1	2-1/2	3-5/8	2-5/8	9.42
25	5.320	4.987	D50B25H	B	1	2-1/2	3-5/8	1-7/8	6.94	T50B25H	B	1	2-1/2	3-5/8	2-5/8	10.16
26	5.520	5.185	D50B26	B	1	2-1/2	3-3/4	1-7/8	7.54	T50B26	B	1	2-1/2	3-3/4	2-5/8	11.02
30	6.320	5.979	D50B30	B	1	2-1/2	3-3/4	1-7/8	9.40	T50B30	B	1	2-1/2	3-3/4	2-5/8	14.24
32	6.720	6.376	D50B32	B	1	2-1/2	3-3/4	1-7/8	10.46							
35	7.320	6.972	D50B35	B	1	2-1/2	3-3/4	1-7/8	12.28	T50B35	B	1	2-1/2	3-3/4	2-5/8	18.96
36	7.520	7.171	D50B36	B	1-3/16	2-3/4	4	2-1/8	13.94	T50B36	B	1-3/16	2-3/4	4	2-3/4	20.60
40	8.320	7.966	D50B40	B	1-3/16	2-3/4	4	2-1/8	16.54							
42	8.720	8.363	D50B42	B	1-3/16	2-3/4	4	2-1/8	17.92	T50B42	B	1-3/16	2-3/4	4	2-3/4	27.46
45	9.310	8.960	D50B45	B	1-3/16	2-3/4	4	2-1/8	20.30							
48	9.910	9.556	D50B48	B	1-3/16	2-3/4	4-1/4	2-3/8	24.08	T50B48	B	1-3/16	2-3/4	4	3-1/8	36.64
52	10.710	10.351	D50B52	B	1-3/16	2-3/4	4-1/4	2-3/8	27.42	T50B52	B	1-3/16	2-3/4	4	3-1/8	42.54
54	11.110	10.749	D50B54	B	1-3/16	2-3/4	4-1/4	2-3/8	29.16							
60	12.300	11.942	D50B60	B	1-5/16	3	4-1/2	2-3/8	35.88	T50B60	B	1-5/16	3	4-1/2	3-1/8	56.84
68	13.890	13.533	D50B68	B	1-5/16	3	4-1/2	2-3/8	44.98	T50B68	B	1-5/16	3	4-1/2	3-1/8	73.21
72	14.690	14.329	D50B72	B	1-5/16	3	4-1/2	2-3/8	50.22	T50C72	C	1-5/16	3	4-3/4	3-1/2	54.40
76	15.490	15.124	D50B76	B	1-5/16	3	4-1/2	2-3/8	45.64	T50C76	C	1-5/16	3	4-3/4	3-1/2	57.20
84	17.080	16.715	D50B84	B	1-5/16	3	4-1/2	2-3/8	51.64	T50C84	C	1-5/16	3	4-3/4	3-1/2	65.32
95	19.270	18.903	D50B95	B	1-5/16	3	4-1/2	2-3/8	64.32	T50C95	C	1-5/16	3	4-3/4	3-3/4	74.42
96	19.470	19.102	D50B96	B	1-5/16	3	4-1/2	2-3/8	67.42							
102	20.660	20.295	D50B102	B	1-5/16	3	4-1/2	2-3/8	72.68	T50C102	C	1-5/16	3	4-3/4	3-3/4	79.94
112	22.650	22.285	D50B112	B	1-5/16	3-5/16	5-1/4	2-3/8	90.22							

H - Denotes hardened teeth.

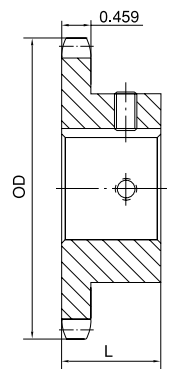
Maximum bores shown, accommodate standard keyway with setscrew positioned over keyway.

No. 60 FINISHED BORE

3/4" Pitch

Single Type BS

No. of Teeth	Part No.	OD	L	App. Wt. (Lbs.)	Finished Bores (Includes Keyway and 2 Setscrews)
9	60BS9H	2.510	1-1/4	0.6	3/4 7/8 1
10	60BS10H	2.760	1-1/4	0.7	3/4 7/8 1 1-1/8 1-3/16 1-1/4
11	60BS11H	3.000	1-1/4	0.9	3/4 7/8 1 1-1/8 1-3/16 1-1/4
12	60BS12H	3.250	1-1/4	1.3	3/4 7/8 1 1-1/8 1-3/16 1-1/4 1-7/16
13	60BS13H	3.490	1-1/4	1.3	3/4 7/8 1 1-1/8 1-3/16 1-1/4 1-3/8 1-7/16 1-1/2
14	60BS14H	3.740	1-1/4	1.6	3/4 7/8 1 1-1/8 1-3/16 1-1/4 1-3/8 1-7/16 1-1/2 1-5/8
15	60BS15H	3.980	1-1/4	1.7	3/4 7/8 1 1-1/8 1-3/16 1-1/4 1-3/8 1-7/16 1-1/2 1-5/8 1-3/4
16	60BS16H	4.220	1-1/4	2.1	3/4 7/8 1 1-1/8 1-3/16 1-1/4 1-3/8 1-7/16 1-1/2 1-5/8 1-3/4 1-15/16
17	60BS17H	4.460	1-1/4	2.4	1 1-1/8 1-3/16 1-1/4 1-3/8 1-7/16 1-1/2 1-5/8 1-3/4 1-15/16
18	60BS18H	4.700	1-1/4	2.6	1 1-1/8 1-3/16 1-1/4 1-3/8 1-7/16 1-1/2 1-5/8 1-3/4 1-15/16
19	60BS19H	4.950	1-1/4	3.4	1 1-1/8 1-3/16 1-1/4 1-3/8 1-7/16 1-1/2 1-5/8 1-3/4 1-15/16
20	60BS20H	5.190	1-1/4	3.9	1 1-1/8 1-3/16 1-1/4 1-3/8 1-7/16 1-1/2 1-5/8 1-3/4 1-15/16
21	60BS21H	5.430	1-1/4	4.4	1 1-1/8 1-3/16 1-1/4 1-3/8 1-7/16 1-1/2 1-5/8 1-3/4 1-15/16
22	60BS22H	5.670	1-1/4	4.7	1 1-1/8 1-3/16 1-1/4 1-3/8 1-7/16 1-1/2 1-5/8 1-3/4 1-15/16
23	60BS23H	5.910	1-1/4	5.0	1 1-1/8 1-3/16 1-1/4 1-3/8 1-7/16 1-1/2 1-5/8 1-3/4 1-15/16
24	60BS24H	6.150	1-1/4	5.3	1 1-1/8 1-3/16 1-1/4 1-3/8 1-7/16 1-1/2 1-5/8 1-3/4 1-15/16
25	60BS25H	6.390	1-1/4	5.4	1 1-1/8 1-3/16 1-1/4 1-3/8 1-7/16 1-1/2 1-5/8 1-3/4 1-15/16
26	60BS26H	6.630	1-1/4	5.8	1 1-1/8 1-3/16 1-1/4 1-3/8 1-7/16 1-1/2 1-5/8 1-3/4 1-15/16
27	60BS27H	6.870	1-1/4	6.3	1 1-1/8 1-3/16 1-1/4 1-3/8 1-7/16 1-1/2 1-5/8 1-3/4 1-15/16
28	60BS28H	7.110	1-1/4	6.4	1 1-1/8 1-3/16 1-1/4 1-3/8 1-7/16 1-1/2 1-5/8 1-3/4 1-15/16
29	60BS29H	7.350	1-1/4	6.9	1 1-1/8 1-3/16 1-1/4 1-3/8 1-7/16 1-1/2 1-5/8 1-3/4 1-15/16
30	60BS30H	7.590	1-1/4	7.1	1 1-1/8 1-3/16 1-1/4 1-3/8 1-7/16 1-1/2 1-5/8 1-3/4 1-15/16
31	60BS31H	7.830	1-1/4	7.4	1 1-1/8 1-3/16 1-1/4 1-3/8 1-7/16 1-1/2 1-5/8 1-3/4 1-15/16
32	60BS32H	8.070	1-1/4	7.8	1 1-1/8 1-3/16 1-1/4 1-3/8 1-7/16 1-1/2 1-5/8 1-3/4 1-15/16
33	60BS33H	8.300	1-1/4	8.2	1 1-1/8 1-3/16 1-1/4 1-3/8 1-7/16 1-1/2 1-5/8 1-3/4 1-15/16
34	60BS34H	8.540	1-1/4	8.5	1 1-1/8 1-3/16 1-1/4 1-3/8 1-7/16 1-1/2 1-5/8 1-3/4 1-15/16
35	60BS35H	8.780	1-1/4	8.8	1 1-1/8 1-3/16 1-1/4 1-3/8 1-7/16 1-1/2 1-5/8 1-3/4 1-15/16
36	60BS36H	9.020	1-1/4	9.2	1 1-1/8 1-3/16 1-1/4 1-3/8 1-7/16 1-1/2 1-5/8 1-3/4 1-15/16 2 2-3/16 2-7/16
37	60BS37	9.260	1-1/4	9.9	1 1-1/8 1-3/16 1-1/4 1-3/8 1-7/16 1-1/2 1-5/8 1-3/4 1-15/16 2 2-3/16 2-7/16
38	60BS38	9.500	1-1/4	10.5	1 1-1/8 1-3/16 1-1/4 1-3/8 1-7/16 1-1/2 1-5/8 1-3/4 1-15/16 2 2-3/16 2-7/16
39	60BS39	9.740	1-1/4	10.9	1 1-1/8 1-3/16 1-1/4 1-3/8 1-7/16 1-1/2 1-5/8 1-3/4 1-15/16 2 2-3/16 2-7/16
40	60BS40	9.980	1-1/4	11.2	1 1-1/8 1-3/16 1-1/4 1-3/8 1-7/16 1-1/2 1-5/8 1-3/4 1-15/16 2 2-3/16 2-7/16
41	60BS41	10.220	1-1/4	11.8	1 1-1/8 1-3/16 1-1/4 1-3/8 1-7/16 1-1/2 1-5/8 1-3/4 1-15/16 2 2-3/16 2-7/16
42	60BS42	10.460	1-1/4	12.4	1 1-1/8 1-3/16 1-1/4 1-3/8 1-7/16 1-1/2 1-5/8 1-3/4 1-15/16 2 2-3/16 2-7/16
43	60BS43	10.700	1-1/4	13.0	1 1-1/8 1-3/16 1-1/4 1-3/8 1-7/16 1-1/2 1-5/8 1-3/4 1-15/16 2 2-3/16 2-7/16
44	60BS44	10.940	1-1/4	13.5	1 1-1/8 1-3/16 1-1/4 1-3/8 1-7/16 1-1/2 1-5/8 1-3/4 1-15/16 2 2-3/16 2-7/16
45	60BS45	11.180	1-1/4	13.8	1 1-1/8 1-3/16 1-1/4 1-3/8 1-7/16 1-1/2 1-5/8 1-3/4 1-15/16 2 2-3/16 2-7/16
46	60BS46	11.420	1-1/4	14.1	1 1-1/8 1-3/16 1-1/4 1-3/8 1-7/16 1-1/2 1-5/8 1-3/4 1-15/16 2 2-3/16 2-7/16
47	60BS47	11.650	1-1/4	14.6	1 1-1/8 1-3/16 1-1/4 1-3/8 1-7/16 1-1/2 1-5/8 1-3/4 1-15/16 2 2-3/16 2-7/16
48	60BS48	11.890	1-1/4	15.4	1 1-1/8 1-3/16 1-1/4 1-3/8 1-7/16 1-1/2 1-5/8 1-3/4 1-15/16 2 2-3/16 2-7/16
49	60BS49	12.130	1-1/4	16.4	1 1-1/8 1-3/16 1-1/4 1-3/8 1-7/16 1-1/2 1-5/8 1-3/4 1-15/16 2 2-3/16 2-7/16
50	60BS50	12.370	1-1/4	17.3	1 1-1/8 1-3/16 1-1/4 1-3/8 1-7/16 1-1/2 1-5/8 1-3/4 1-15/16 2 2-3/16 2-7/16
51	60BS51	12.610	1-1/4	18.3	1 1-1/8 1-3/16 1-1/4 1-3/8 1-7/16 1-1/2 1-5/8 1-3/4 1-15/16 2 2-3/16 2-7/16
52	60BS52	12.850	1-1/4	19.3	1 1-1/8 1-3/16 1-1/4 1-3/8 1-7/16 1-1/2 1-5/8 1-3/4 1-15/16 2 2-3/16 2-7/16
53	60BS53	13.090	1-1/4	20.3	1 1-1/8 1-3/16 1-1/4 1-3/8 1-7/16 1-1/2 1-5/8 1-3/4 1-15/16 2 2-3/16 2-7/16
54	60BS54	13.330	1-3/4	21.0	1 1-1/8 1-3/16 1-1/4 1-3/8 1-7/16 1-1/2 1-5/8 1-3/4 1-15/16 2 2-3/16 2-7/16
55	60BS55	13.570	1-3/4	21.2	1-3/8 1-7/16 1-1/2 1-5/8 1-3/4 1-15/16 2 2-3/16 2-7/16
56	60BS56	13.810	1-3/4	21.3	1-3/8 1-7/16 1-1/2 1-5/8 1-3/4 1-15/16 2 2-3/16 2-7/16
57	60BS57	14.040	1-3/4	22.2	1-3/8 1-7/16 1-1/2 1-5/8 1-3/4 1-15/16 2 2-3/16 2-7/16
58	60BS58	14.280	1-3/4	23.0	1-3/8 1-7/16 1-1/2 1-5/8 1-3/4 1-15/16 2 2-3/16 2-7/16
59	60BS59	14.520	1-3/4	23.8	1-3/8 1-7/16 1-1/2 1-5/8 1-3/4 1-15/16 2 2-3/16 2-7/16
60	60BS60	14.760	1-3/4	25.0	1-3/8 1-7/16 1-1/2 1-5/8 1-3/4 1-15/16 2 2-3/16 2-7/16
70	60BS70	17.150	1-3/4	31.4	1-3/8 1-7/16 1-1/2 1-5/8 1-3/4 1-15/16 2 2-3/16 2-7/16
72	60BS72	17.630	2	33.5	1-3/8 1-7/16 1-1/2 1-5/8 1-3/4 1-15/16 2 2-3/16 2-7/16
80	60BS80	19.540	2	41.2	1-3/8 1-7/16 1-1/2 1-5/8 1-3/4 1-15/16 2 2-3/16 2-7/16
84	60BS84	20.490	2	45.8	1-3/8 1-7/16 1-1/2 1-5/8 1-3/4 1-15/16 2 2-3/16 2-7/16
96	60BS96	23.360	2-1/4	62.3	1-3/8 1-7/16 1-1/2 1-5/8 1-3/4 1-15/16 2 2-3/16 2-7/16
112	60BS112	27.180	2-1/4	81.6	1-3/8 1-7/16 1-1/2 1-5/8 1-3/4 1-15/16 2 2-3/16 2-7/16

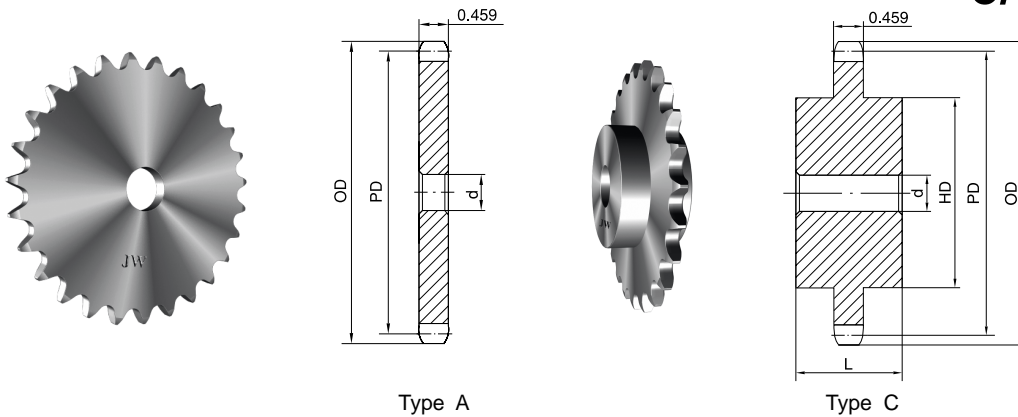


Type BS

H - Denotes hardened teeth.
 Larger bore sizes require hubs of greater diameter.
 Keyway centered on line of tooth.

STOCK SPROCKETS **No. 60**

3/4" Pitch



Single Type A

No. of Teeth	Part No.	OD	PD	d	App. Wt. (Lbs.)	No. of Teeth	Part No.	OD	PD	d	App. Wt. (Lbs.)
8	60A8H	2.260	1.960	1/2	0.33	41	60A41	10.220	9.798	15/16	9.10
9	60A9H	2.510	2.193	1/2	0.42	42	60A42	10.460	10.037	15/16	9.74
10	60A10H	2.760	2.427	3/4	0.44	43	60A43	10.700	10.275	15/16	9.84
11	60A11H	3.000	2.663	3/4	0.60	44	60A44	10.940	10.514	15/16	10.76
12	60A12H	3.250	2.898	3/4	0.72	45	60A45	11.180	10.752	15/16	11.08
13	60A13H	3.490	3.134	3/4	0.85	46	60A46	11.420	10.991	15/16	11.50
14	60A14H	3.740	3.371	3/4	0.99	47	60A47	11.650	11.229	15/16	12.32
15	60A15H	3.980	3.608	3/4	1.10	48	60A48	11.890	11.468	15/16	12.42
16	60A16H	4.220	3.845	3/4	1.24	49	60A49	12.130	11.706	15/16	12.92
17	60A17H	4.460	4.082	3/4	1.44	50	60A50	12.370	11.945	15/16	13.98
18	60A18H	4.700	4.319	3/4	1.62	51	60A51	12.610	12.183	15/16	14.58
19	60A19H	4.950	4.557	3/4	1.84	52	60A52	12.850	12.422	15/16	14.60
20	60A20H	5.190	4.794	3/4	2.12	53	60A53	13.090	12.660	15/16	15.84
21	60A21H	5.430	5.033	3/4	2.28	54	60A54	13.330	12.899	15/16	15.92
22	60A22H	5.670	5.270	3/4	2.48	55	60A55	13.570	13.137	1-1/4	16.96
23	60A23H	5.910	5.508	3/4	2.68	56	60A56	13.810	13.376	1-1/4	17.60
24	60A24H	6.150	5.746	23/32	3.00	57	60A57	14.040	13.615	1-1/4	17.62
25	60A25H	6.390	5.984	23/32	3.34	58	60A58	14.280	13.853	1-1/4	19.00
26	60A26H	6.630	6.222	23/32	3.54	59	60A59	14.520	14.092	1-1/4	19.20
27	60A27H	6.870	6.461	23/32	3.96	60	60A60	14.760	14.330	1-1/4	20.02
28	60A28H	7.110	6.698	23/32	4.14	64	60A64	15.720	15.285	1-1/4	23.00
29	60A29H	7.350	6.937	23/32	4.40	65	60A65	15.960	15.524	1-1/4	23.24
30	60A30H	7.590	7.175	23/32	4.78	66	60A66	16.190	15.762	1-1/4	24.42
31	60A31H	7.830	7.413	23/32	5.24	68	60A68	16.670	16.240	1-1/4	25.54
32	60A32H	8.070	7.652	23/32	5.52	70	60A70	17.150	16.717	1-1/4	27.20
33	60A33H	8.300	7.890	15/16	5.86	72	60A72	17.630	17.195	1-1/4	28.90
34	60A34H	8.540	8.129	15/16	6.16	76	60A76	18.580	18.149	1-1/4	32.34
35	60A35H	8.780	8.367	15/16	6.78	80	60A80	19.540	19.103	1-1/4	40.18
36	60A36H	9.020	8.606	15/16	6.82	84	60A84	20.490	20.058	1-1/4	43.44
37	60A37	9.260	8.844	15/16	7.52	90	60A90	21.930	21.491	1-1/4	45.50
38	60A38	9.500	9.083	15/16	7.84	96	60A96	23.360	22.922	1-1/4	52.02
39	60A39	9.740	9.321	15/16	8.28	112	60A112	27.180	26.741	1-1/4	70.80
40	60A40	9.980	9.560	15/16	8.56						

Single Type C

No. of Teeth	Part No.	OD	PD	d		HD	L	App. Wt. (Lbs.)
				Min.	Max.			
12	60C12	3.250	2.898	3/4	1-3/8	2-3/8*	2	2.25
13	60C13	3.490	3.134	3/4	1-1/2	2-11/32	2	2.75
14	60C14	3.740	3.371	3/4	1-3/4	2-9/16	2	3.19
15	60C15	3.980	3.608	3/4	1-7/8	2-7/8	2	3.70
16	60C16	4.220	3.845	3/4	2	3-1/16	2	4.19
17	60C17	4.460	4.082	3/4	2-1/4	3-1/4	2	4.81
18	60C18	4.700	4.319	3/4	2-3/8	3-1/2	2	5.62

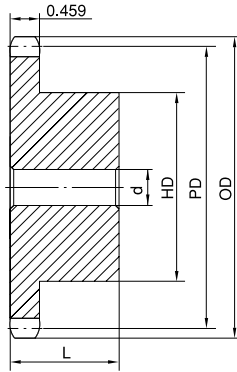
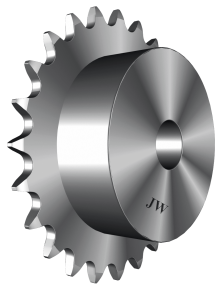
H - Denotes hardened teeth.

Maximum bores shown, accommodate standard keyway with setscrew positioned over keyway.

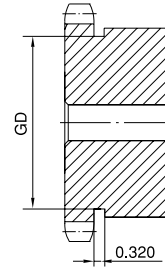
* Hub has recessed groove allowing for chain clearance. Groove depth is the same as Single Type B; see page 22.

No. 60 STOCK SPROCKETS

3/4" Pitch



Type B



Type B

Single Type B

No. of Teeth	Part No.	OD	PD	d		HD	L	App. Wt. (Lbs.)	No. of Teeth	Part No.	OD	PD	d		HD	L	App. Wt. (Lbs.)
				Min.	Max.								Min.	Max.			
8	60B8H	2.260	1.960	5/8	5/8	1-15/32*	1-1/4	0.54	41	60B41	10.220	9.798	1	2-3/4	4-1/4	1-1/4	12.14
9	60B9H	2.510	2.193	3/4	7/8	1-9/16*	1-1/4	0.64	42	60B42	10.460	10.037	1	2-3/4	4-1/4	1-1/4	12.74
10	60B10H	2.760	2.427	3/4	1-1/8	1-15/16*	1-1/4	0.99	43	60B43	10.700	10.275	1	2-3/4	4-1/4	1-1/4	13.00
11	60B11H	3.000	2.663	3/4	1-5/16	2-1/16*	1-1/4	1.16	44	60B44	10.940	10.514	15/16	2-3/4	4-1/4	1-1/4	13.88
12	60B12H	3.250	2.898	3/4	1-3/8	2-3/8*	1-1/4	1.47	45	60B45	11.180	10.752	15/16	2-3/4	4-1/4	1-1/4	13.98
13	60B13H	3.490	3.134	3/4	1-1/2	2-11/32	1-1/4	1.66	46	60B46	11.420	10.991	15/16	2-3/4	4-1/4	1-1/4	14.60
14	60B14H	3.740	3.371	3/4	1-3/4	2-9/16	1-1/4	2.00	47	60B47	11.650	11.229	15/16	2-3/4	4-1/4	1-1/4	15.00
15	60B15H	3.980	3.608	3/4	1-7/8	2-7/8	1-1/4	2.51	48	60B48	11.890	11.468	15/16	2-3/4	4-1/4	1-1/4	15.42
16	60B16H	4.220	3.845	3/4	2	3-1/16	1-1/4	2.81	49	60B49	12.130	11.706	15/16	2-3/4	4-1/4	1-1/4	15.90
17	60B17H	4.460	4.082	3/4	2-1/4	3-1/4	1-1/4	3.22	50	60B50	12.370	11.945	15/16	2-3/4	4-1/4	1-1/4	16.40
18	60B18H	4.700	4.319	3/4	2-3/8	3-1/2	1-1/4	3.72	51	60B51	12.610	12.183	15/16	2-3/4	4-1/4	1-1/4	16.90
19	60B19H	4.950	4.557	3/4	2-3/8	3-1/2	1-1/4	3.92	52	60B52	12.850	12.422	15/16	2-3/4	4-1/4	1-1/4	17.43
20	60B20H	5.190	4.794	3/4	2-5/8	3-7/8	1-1/4	4.63	53	60B53	13.090	12.660	15/16	2-3/4	4-1/4	1-1/4	17.99
21	60B21H	5.430	5.033	3/4	2-3/4	4	1-1/4	5.00	54	60B54	13.330	12.899	15/16	2-3/4	4-1/4	1-3/4	20.60
22	60B22H	5.670	5.270	3/4	2-3/4	4	1-1/4	5.25	55	60B55	13.570	13.137	1-1/4	2-3/4	4-1/4	1-3/4	21.14
23	60B23H	5.910	5.508	3/4	2-3/4	4	1-1/4	5.48	56	60B56	13.810	13.376	1-1/4	2-3/4	4-1/4	1-3/4	21.88
24	60B24H	6.150	5.746	3/4	2-3/4	4	1-1/4	5.78	57	60B57	14.040	13.615	1-1/4	2-3/4	4-1/4	1-3/4	22.26
25	60B25H	6.390	5.984	3/4	2-3/4	4	1-1/4	6.13	58	60B58	14.280	13.853	1-1/4	2-3/4	4-1/4	1-3/4	22.80
26	60B26H	6.630	6.222	3/4	2-3/4	4	1-1/4	6.38	59	60B59	14.520	14.092	1-1/4	2-3/4	4-1/4	1-3/4	23.86
27	60B27H	6.870	6.461	3/4	2-3/4	4	1-1/4	6.72	60	60B60	14.760	14.330	1-1/4	2-3/4	4-1/4	1-3/4	25.22
28	60B28H	7.110	6.698	3/4	2-3/4	4	1-1/4	6.88	64	60B64	15.720	15.285	1-1/4	2-3/4	4-1/4	1-3/4	27.40
29	60B29H	7.350	6.937	3/4	2-3/4	4	1-1/4	7.28	65	60B65	15.960	15.524	1-1/4	2-3/4	4-1/4	1-3/4	28.92
30	60B30H	7.590	7.175	3/4	2-3/4	4	1-1/4	7.58	66	60B66	16.190	15.762	1-1/4	2-3/4	4-1/4	1-3/4	30.10
31	60B31H	7.830	7.413	3/4	2-3/4	4	1-1/4	7.72	68	60B68	16.670	16.240	1-1/4	2-3/4	4-1/4	1-3/4	30.38
32	60B32H	8.070	7.652	3/4	2-3/4	4	1-1/4	8.26	70	60B70	17.150	16.717	1-1/4	2-3/4	4-1/4	1-3/4	31.98
33	60B33H	8.300	7.890	1	2-3/4	4	1-1/4	8.42	72	60B72	17.630	17.195	1-1/4	2-3/4	4-1/4	2	34.18
34	60B34H	8.540	8.129	1	2-3/4	4	1-1/4	8.80	76	60B76	18.580	18.149	1-1/4	2-3/4	4-1/4	2	38.06
35	60B35H	8.780	8.367	1	2-3/4	4	1-1/4	9.04	80	60B80	19.540	19.103	1-1/4	2-3/4	4-1/4	2	41.88
36	60B36H	9.020	8.606	1	2-3/4	4	1-1/4	9.60	84	60B84	20.490	20.058	1-1/4	3-1/4	4-3/4	2	46.46
37	60B37	9.260	8.844	1	2-3/4	4	1-1/4	10.24	90	60B90	21.930	21.491	1-1/4	3-5/16	5	2-1/4	63.20
38	60B38	9.500	9.083	1	2-3/4	4-1/4	1-1/4	10.84	96	60B96	23.360	22.922	1-1/4	3-3/4	5-1/2	2-1/4	65.08
39	60B39	9.740	9.321	1	2-3/4	4-1/4	1-1/4	11.36	112	60B112	27.180	26.741	1-1/4	3-3/4	5-1/2	2-1/4	81.78
40	60B40	9.980	9.560	1	2-3/4	4-1/4	1-1/4	11.50									

H - Denotes hardened teeth.

Maximum bores shown, accommodate standard keyway with setscrew positioned over keyway.

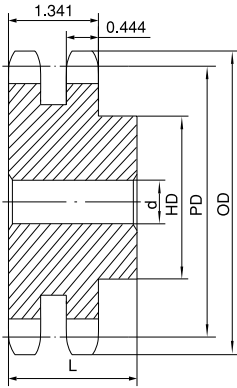
* Hub has recessed groove allowing for chain clearance. GD are as follows:

8 Teeth = 1.075in 9 Teeth = 1.307in 10 Teeth = 1.555in
 11 Teeth = 1.803in 12 Teeth = 2.026in

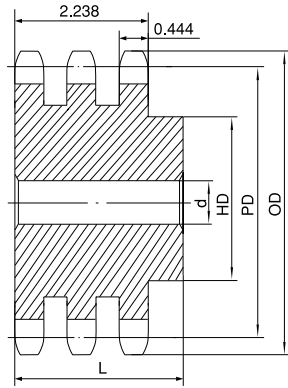
STOCK SPROCKETS

No. 60

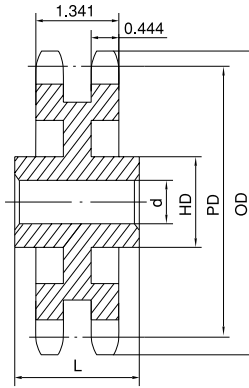
3/4" Pitch



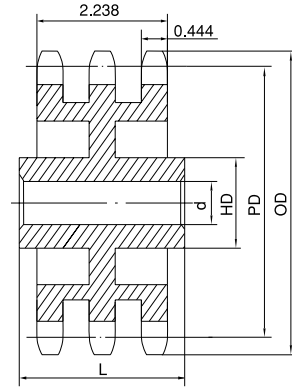
Type B



Type B



Type C



Type C

Double Type B & C

Triple Type B & C

No. of Teeth	OD	PD	Double Type B & C							Triple Type B & C						
			Part No.	Type	d		HD	L	App. Wt. (Lbs.)	Part No.	Type	d		HD	L	App. Wt. (Lbs.)
					Min.	Max.						Min.	Max.			
11	3.000	2.663	D60B11H	B	1	1-1/4	1-13/16	2-1/8	1.62	T60B11H	B	1	1-1/4	1-13/16	3	2.5
12	3.250	2.898	D60B12H	B	1	1-7/16	2-1/8	2-1/8	2.20	T60B12H	B	1	1-7/16	2-1/8	3	3.3
13	3.490	3.134	D60B13H	B	1	1-1/2	2-1/4	2-1/8	2.60	T60B13H	B	1	1-1/2	2-1/4	3	3.9
14	3.740	3.371	D60B14H	B	1	1-3/4	2-1/2	2-1/8	3.24	T60B14H	B	1	1-3/4	2-1/2	3	4.5
15	3.980	3.608	D60B15H	B	1	1-7/8	2-13/16	2-1/8	4.00	T60B15H	B	1	1-7/8	2-13/16	3	5.4
16	4.220	3.845	D60B16H	B	1	2	3	2-1/8	4.62	T60B16H	B	1	2	3	3	6.5
17	4.460	4.082	D60B17H	B	1	2-1/4	3-1/4	2-1/8	5.40	T60B17H	B	1	2-1/4	3-1/4	3	7.7
18	4.700	4.319	D60B18H	B	1	2-3/8	3-1/2	2-1/8	6.24	T60B18H	B	1	2-3/8	3-1/2	3	8.5
19	4.950	4.557	D60B19H	B	1	2-1/2	3-11/16	2-1/8	7.00	T60B19H	B	1	2-1/2	3-11/16	3	10.0
20	5.190	4.794	D60B20H	B	1	2-1/2	3-3/4	2-1/8	7.72	T60B20H	B	1	2-1/2	3-3/4	3	11.2
21	5.430	5.033	D60B21H	B	1	2-3/4	4-1/8	2-1/8	8.82	T60B21H	B	1	2-3/4	4-1/8	3	12.5
22	5.670	5.270	D60B22H	B	1	2-3/4	4-1/4	2-1/8	9.70	T60B22H	B	1	2-3/4	4-1/4	3	13.2
23	5.910	5.508	D60B23H	B	1	2-3/4	4-1/4	2-1/8	10.30	T60B23H	B	1	2-3/4	4-1/4	3	14.6
24	6.150	5.746	D60B24H	B	1	2-3/4	4-1/4	2-1/8	11.14	T60B24H	B	1	2-3/4	4-1/4	3	15.8
25	6.390	5.984	D60B25H	B	1	2-3/4	4-1/4	2-1/8	12.00	T60B25H	B	1	2-3/4	4-1/4	3	17.0
26	6.630	6.222	D60B26	B	1	2-3/4	4-1/4	2-1/8	12.70	T60B26	B	1	2-3/4	4-1/4	3	18.6
30	7.590	7.175	D60B30	B	1	2-3/4	4-1/4	2-1/8	16.40	T60B30	B	1	2-3/4	4-1/4	3	23.2
32	8.070	7.652	D60B32	B	1-1/4	3	4-1/2	2-3/8	19.52	T60B32	B	1	2-3/4	4-1/4	3	30.7
35	8.780	8.367	D60B35	B	1-1/4	3	4-1/2	2-3/8	22.80	T60B35	B	1-1/4	3	4-1/2	3-1/4	34.5
36	9.020	8.606	D60B36	B	1-1/4	3	4-1/2	2-3/8	23.82	T60B36	B	1-1/4	3	4-1/2	3-1/4	37.0
40	9.980	9.560	D60B40	B	1-1/4	3-1/4	4-3/4	2-3/4	30.84	T60B40	B	1-1/4	3-1/4	4-3/4	3-5/8	45.3
42	10.460	10.037	D60B42	B	1-1/4	3-1/4	4-3/4	2-3/4	33.10	T60B42	B	1-1/4	3-1/4	4-3/4	3-5/8	49.0
45	11.180	10.750	D60B45	B	1-1/4	3-1/4	4-3/4	2-3/4	37.10	T60B45	B	1-1/4	3-1/4	4-3/4	3-5/8	57.0
52	12.850	12.422	D60B52	B	1-1/4	3-1/4	4-3/4	2-3/4	48.70	T60C52	C	1-1/4	3-1/4	4-3/4	3-1/2	73.0
60	14.760	14.330	D60B60	B	1-1/4	3-1/4	4-3/4	2-3/4	63.10	T60C60	C	1-1/4	3-1/4	4-3/4	3-1/2	76.6
68	16.670	16.240	D60C68	C	1-1/4	3-5/16	5	3	53.70	T60C68	C	1-1/4	3-1/4	5	3-1/2	80.0
72	17.630	17.195	D60C72	C	1-1/4	3-5/16	5	3	53.74	T60C72	C	1-1/4	3-1/4	5	3-1/2	82.0
76	18.580	18.149	D60C76	C	1-1/4	3-5/16	5	3	60.30	T60C76	C	1-1/2	3-3/4	5-1/2	3-1/2	85.0
95	23.120	22.683	D60C95	C	1-1/4	3-3/4	5-1/2	3-1/2	87.14	T60C95	C	1-1/2	3-3/4	5-1/2	4	105.0

H - Denotes hardened teeth.

Maximum bores shown, accommodate standard keyway with setscrew positioned over keyway.