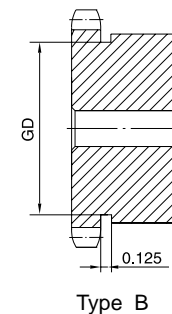
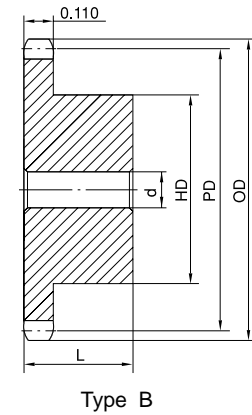
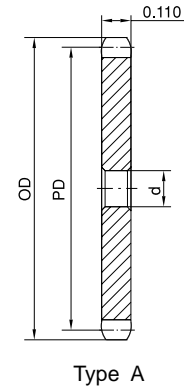


# No. 25 STOCK SPROCKETS

## 1/4" Pitch

### Single Type A & B

No. of Teeth	OD	PD	Type A			Type B					
			Part No.	d	App. Wt. (Lbs.)	Part No.	d		HD	L	App. Wt. (Lbs.)
9	0.837	0.731	25A9H	1/4	0.01	25B9H	1/4	1/4	7/16*	1/2	0.03
10	0.919	0.809	25A10H	1/4	0.02	25B10H	1/4	1/4	1/2*	1/2	0.03
11	1.002	0.887	25A11H	1/4	0.02	25B11H	1/4	5/16	9/16*	1/2	0.04
12	1.083	0.966	25A12H	1/4	0.02	25B12H	1/4	3/8	5/8*	1/2	0.06
13	1.167	1.044	25A13H	1/4	0.02	25B13H	1/4	7/16	23/32*	1/2	0.07
14	1.246	1.124	25A14H	1/4	0.03	25B14H	1/4	9/16	13/16	1/2	0.08
15	1.326	1.202	25A15H	1/4	0.03	25B15H	1/4	9/16	57/64	1/2	0.10
16	1.407	1.281	25A16H	1/4	0.04	25B16H	1/4	9/16	31/32	1/2	0.12
17	1.487	1.361	25A17H	1/4	0.04	25B17H	1/4	5/8	1-1/32	1/2	0.14
18	1.568	1.440	25A18H	1/4	0.05	25B18H	1/4	3/4	1-1/8	1/2	0.16
19	1.648	1.519	25A19H	1/4	0.05	25B19H	1/4	13/16	1-7/32	1/2	0.19
20	1.729	1.598	25A20H	1/4	0.06	25B20H	1/4	7/8	1-9/32	5/8	0.25
21	1.809	1.678	25A21H	3/8	0.06	25B21H	1/4	7/8	1-3/8	5/8	0.28
22	1.889	1.757	25A22H	3/8	0.07	25B22H	1/4	15/16	1-7/16	5/8	0.31
23	1.969	1.836	25A23H	3/8	0.07	25B23H	1/4	1	1-1/2	5/8	0.32
24	2.049	1.915	25A24H	3/8	0.08	25B24H	3/8	1	1-1/2	5/8	0.33
25	2.129	1.994	25A25H	3/8	0.09	25B25H	3/8	1	1-1/2	5/8	0.34
26	2.209	2.074	25A26H	3/8	0.10	25B26H	3/8	1	1-1/2	5/8	0.35
27	2.289	2.154	25A27H	3/8	0.11	25B27H	3/8	1	1-1/2	5/8	0.35
28	2.369	2.233	25A28H	3/8	0.12	25B28H	3/8	1	1-1/2	5/8	0.36
29	2.449	2.312	25A29H	3/8	0.13	25B29H	3/8	1	1-1/2	5/8	0.37
30	2.529	2.392	25A30H	3/8	0.14	25B30H	3/8	1	1-1/2	5/8	0.38
31	2.609	2.471	25A31H	3/8	0.15	25B31H	3/8	1	1-1/2	5/8	0.39
32	2.688	2.550	25A32H	3/8	0.15	25B32H	3/8	1	1-1/2	5/8	0.40
33	2.768	2.630	25A33H	3/8	0.17	25B33H	3/8	1	1-1/2	5/8	0.41
34	2.848	2.709	25A34H	3/8	0.17	25B34H	3/8	1	1-1/2	5/8	0.42
35	2.928	2.789	25A35H	3/8	0.19	25B35H	3/8	1	1-1/2	5/8	0.44
36	3.008	2.869	25A36H	3/8	0.20	25B36H	3/8	1	1-1/2	3/4	0.46
37	3.087	2.948	25A37	1/2	0.21	25B37	1/2	1-3/8	2	3/4	0.48
38	3.167	3.028	25A38	1/2	0.22	25B38	1/2	1-3/8	2	3/4	0.50
39	3.247	3.107	25A39	1/2	0.23	25B39	1/2	1-3/8	2	3/4	0.52
40	3.327	3.186	25A40	1/2	0.24	25B40	1/2	1-3/8	2	3/4	0.54
41	3.406	3.266	25A41	1/2	0.26	25B41	1/2	1-3/8	2	3/4	0.56
42	3.486	3.345	25A42	1/2	0.26	25B42	1/2	1-3/8	2	3/4	0.58
43	3.566	3.425	25A43	1/2	0.27	25B43	1/2	1-3/8	2	3/4	0.61
44	3.646	3.504	25A44	1/2	0.28	25B44	1/2	1-3/8	2	3/4	0.64
45	3.725	3.584	25A45	1/2	0.30	25B45	1/2	1-3/8	2	3/4	0.67
46	3.805	3.663	25A46	1/2	0.32	25B46	1/2	1-3/8	2	3/4	0.71
47	3.885	3.743	25A47	1/2	0.34	25B47	1/2	1-3/8	2	3/4	0.75
48	3.964	3.822	25A48	1/2	0.35	25B48	1/2	1-3/8	2	3/4	0.78
50	4.124	3.981	25A50	1/2	0.38	25B50	1/2	1-3/8	2	3/4	0.85
54	4.442	4.300	25A54	1/2	0.45	25B54	1/2	1-3/8	2	3/4	1.00
60	4.920	4.777	25A60	1/2	0.55	25B60	1/2	1-3/8	2	3/4	1.10
65	5.319	5.174	25A65	1/2	0.65	25B65	1/2	1-3/8	2	3/4	1.17
70	5.717	5.572	25A70	1/2	0.75	25B70	1/2	1-3/8	2	3/4	1.25
72	5.876	5.732	25A72	1/2	0.80	25B72	1/2	1-3/8	2	3/4	1.30
75	6.115	5.970	25A75	1/2	0.86	25B75	1/2	1-3/8	2	3/4	1.39
80	6.513	6.368	25A80	1/2	0.98	25B80	1/2	1-3/8	2	3/4	1.54



H - Denotes hardened teeth.

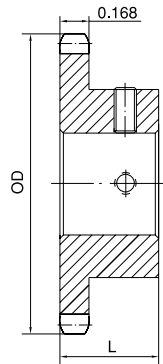
Maximum bores shown, accommodate standard keyway with setscrew positioned over keyway.

\* Hub has recessed groove allowing for chain clearance. GD are as follows:

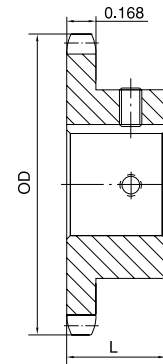
9 Teeth = 0.413in 10 Teeth = 0.492in 11 Teeth = 0.571in

12 Teeth = 0.650in 13 Teeth = 0.728in

## FINISHED BORE **No. 35** 3/8" Pitch



Type BS



Type BS

### Single Type BS

No. of Teeth	Part No.	OD	L	App. Wt. (Lbs.)	Finished Bores (Includes Keyway and 2 Setscrews)									
9	35BS9H	1.260	3/4	0.10	*3/8									
10	35BS10H	1.380	3/4	0.11	*3/8	*1/2	+5/8							
11	35BS11H	1.500	3/4	0.15	*3/8	*1/2	+5/8	+3/4						
12	35BS12H	1.630	3/4	0.18		*1/2	5/8	+3/4						
13	35BS13H	1.750	3/4	0.20		*1/2	5/8	3/4						
14	35BS14H	1.870	3/4	0.22		*1/2	5/8	3/4						
15	35BS15H	1.990	3/4	0.24		*1/2	5/8	3/4	7/8	1				
16	35BS16H	2.110	3/4	0.29		*1/2	5/8	3/4	7/8	1				
17	35BS17H	2.230	3/4	0.36		*1/2	5/8	3/4	7/8	1				
18	35BS18H	2.350	3/4	0.39		*1/2	5/8	3/4	7/8	1				
19	35BS19H	2.470	3/4	0.44		*1/2	5/8	3/4	7/8	1				
20	35BS20H	2.590	3/4	0.51		*1/2	5/8	3/4	7/8	1				
21	35BS21H	2.710	7/8	0.75		*1/2	5/8	3/4	7/8	1				
22	35BS22H	2.830	7/8	0.78		*1/2	5/8	3/4	7/8	1				
23	35BS23H	2.950	7/8	0.78		*1/2	5/8	3/4	7/8	1				
24	35BS24H	3.070	7/8	0.79		*1/2	5/8	3/4	7/8	1				
25	35BS25H	3.190	7/8	0.80		*1/2	5/8	3/4	7/8	1				
26	35BS26H	3.310	7/8	0.84			5/8	3/4	7/8	1	1-1/8	1-3/16	1-1/4	
27	35BS27H	3.430	7/8	0.88			5/8	3/4	7/8	1	1-1/8	1-3/16	1-1/4	
28	35BS28H	3.550	7/8	0.92			5/8	3/4	7/8	1	1-1/8	1-3/16	1-1/4	
30	35BS30H	3.790	7/8	0.98			5/8	3/4	7/8	1	1-1/8	1-3/16	1-1/4	
32	35BS32H	4.030	7/8	1.14			5/8	3/4	7/8	1	1-1/8	1-3/16	1-1/4	
35	35BS35H	4.390	1	1.38			5/8	3/4	7/8	1	1-1/8	1-3/16	1-1/4	
36	35BS36H	4.510	1	1.41			5/8	3/4	7/8	1	1-1/8	1-3/16	1-1/4	
40	35BS40	4.990	1	1.56			5/8	3/4	7/8	1	1-1/8	1-3/16	1-1/4	
42	35BS42	5.230	1	1.64			5/8	3/4	7/8	1	1-1/8	1-3/16	1-1/4	
45	35BS45	5.590	1	1.74			5/8	3/4	7/8	1	1-1/8	1-3/16	1-1/4	
48	35BS48	5.950	1	1.86			5/8	3/4	7/8	1	1-1/8	1-3/16	1-1/4	
54	35BS54	6.660	1	1.98			5/8	3/4	7/8	1	1-1/8	1-3/16	1-1/4	
60	35BS60	7.380	1	2.34				3/4	7/8	1	1-1/8	1-3/16	1-1/4	
70	35BS70	8.580	1	3.14				3/4	7/8	1	1-1/8	1-3/16	1-1/4	
72	35BS72	8.810	1	3.30				3/4	7/8	1	1-1/8	1-3/16	1-1/4	
80	35BS80	9.770	1	3.94				3/4	7/8	1	1-1/8	1-3/16	1-1/4	
84	35BS84	10.250	1	4.26				3/4	7/8	1	1-1/8	1-3/16	1-1/4	
96	35BS96	11.680	1	5.22				3/4	7/8	1	1-1/8	1-3/16	1-1/4	
112	35BS112	13.590	1	6.50				3/4	7/8	1	1-1/8	1-3/16	1-1/4	

H - Denotes hardened teeth.

\* - Indicates no keyway (2-1/4" setscrews included with 1/2" & 3/8" bore).

+ - Setscrews positioned at 90° and 180° to keyway.

Larger bore sizes require hubs of greater diameter.

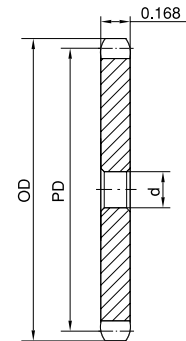
Keyway centered on line of tooth.

# No. 35 STOCK SPROCKETS

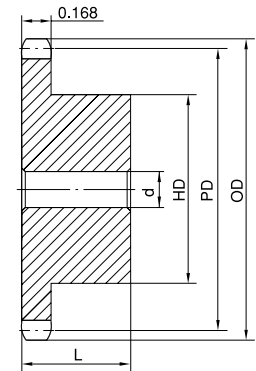
## 3/8" Pitch

### Single Type A & B

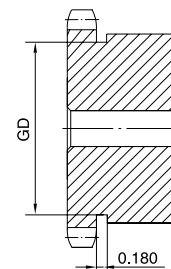
No. of Teeth	OD	PD	Type A			Type B					
			Part No.	d	App. Wt. (Lbs.)	Part No.	d		HD	L	App. Wt. (Lbs.)
							Min.	Max.			
8	1.130	0.980	35A8H	3/8	0.03	35B8H	3/8	3/8	3/4*	3/4	0.07
9	1.260	1.096	35A9H	3/8	0.04	35B9H	3/8	3/8	27/32*	3/4	0.09
10	1.380	1.214	35A10H	3/8	0.06	35B10H	3/8	9/16	31/32*	3/4	0.14
11	1.500	1.331	35A11H	3/8	0.07	35B11H	3/8	9/16	1-1/16*	3/4	0.17
12	1.630	1.449	35A12H	3/8	0.09	35B12H	1/2	9/16	1-7/32*	3/4	0.20
13	1.750	1.567	35A13H	3/8	0.09	35B13H	1/2	11/16	1-1/4*	3/4	0.23
14	1.870	1.685	35A14H	3/8	0.10	35B14H	1/2	7/8	1-1/4	3/4	0.25
15	1.990	1.804	35A15H	1/2	0.10	35B15H	1/2	7/8	1-11/32	3/4	0.29
16	2.110	1.922	35A16H	1/2	0.12	35B16H	1/2	15/16	1-15/32	3/4	0.35
17	2.230	2.041	35A17H	1/2	0.12	35B17H	1/2	1-1/16	1-19/32	3/4	0.42
18	2.350	2.159	35A18H	1/2	0.14	35B18H	1/2	1-3/16	1-23/32	3/4	0.48
19	2.470	2.278	35A19H	1/2	0.16	35B19H	1/2	1-1/4	1-27/32	3/4	0.54
20	2.590	2.397	35A20H	1/2	0.20	35B20H	1/2	1-5/16	1-15/16	3/4	0.59
21	2.710	2.516	35A21H	1/2	0.20	35B21H	1/2	1-3/8	2	7/8	0.80
22	2.830	2.635	35A22H	1/2	0.22	35B22H	1/2	1-3/8	2	7/8	0.80
23	2.950	2.754	35A23H	1/2	0.24	35B23H	1/2	1-3/8	2	7/8	0.82
24	3.070	2.873	35A24H	1/2	0.26	35B24H	1/2	1-3/8	2	7/8	0.88
25	3.190	2.992	35A25H	1/2	0.28	35B25H	1/2	1-3/8	2	7/8	0.88
26	3.310	3.111	35A26H	1/2	0.28	35B26H	1/2	1-3/8	2	7/8	0.90
27	3.430	3.230	35A27H	1/2	0.34	35B27H	1/2	1-3/8	2	7/8	0.94
28	3.550	3.349	35A28H	1/2	0.39	35B28H	1/2	1-3/8	2	7/8	0.94
29	3.670	3.469	35A29H	1/2	0.42	35B29H	1/2	1-3/8	2	7/8	0.98
30	3.790	3.588	35A30H	1/2	0.45	35B30H	1/2	1-3/8	2	7/8	1.02
31	3.910	3.707	35A31H	1/2	0.48	35B31H	1/2	1-3/8	2	7/8	1.06
32	4.030	3.826	35A32H	5/8	0.51	35B32H	1/2	1-3/8	2	7/8	1.10
33	4.150	3.945	35A33H	5/8	0.54	35B33H	5/8	1-1/2	2-1/4	7/8	1.29
34	4.270	4.064	35A34H	5/8	0.57	35B34H	5/8	1-1/2	2-1/4	7/8	1.32
35	4.390	4.183	35A35H	5/8	0.60	35B35H	5/8	1-1/2	2-1/4	7/8	1.36
36	4.510	4.303	35A36H	5/8	0.62	35B36H	5/8	1-1/2	2-1/4	7/8	1.40
37	4.630	4.422	35A37	5/8	0.64	35B37	5/8	1-1/2	2-1/4	1	1.48
38	4.750	4.541	35A38	5/8	0.66	35B38	5/8	1-1/2	2-1/4	1	1.52
39	4.870	4.660	35A39	5/8	0.68	35B39	5/8	1-1/2	2-1/4	1	1.57
40	4.990	4.780	35A40	19/32	0.70	35B40	5/8	1-1/2	2-1/4	1	1.62
42	5.230	5.018	35A42	19/32	0.78	35B42	5/8	1-1/2	2-1/4	1	1.68
45	5.590	5.376	35A45	19/32	0.88	35B45	5/8	1-1/2	2-1/4	1	1.78
48	5.950	5.734	35A48	19/32	1.21	35B48	5/8	1-1/2	2-1/4	1	1.88
50	6.190	5.972	35A50	19/32	1.23	35B50	5/8	1-1/2	2-1/4	1	1.98
54	6.660	6.449	35A54	19/32	1.32	35B54	5/8	1-1/2	2-1/4	1	2.20
60	7.380	7.165	35A60	23/32	1.66	35B60	3/4	1-1/2	2-1/4	1	2.48
65	7.980	7.762	35A65	23/32	1.96	35B65	3/4	1-1/2	2-1/4	1	2.78
70	8.580	8.358	35A70	23/32	2.30	35B70	3/4	1-1/2	2-1/4	1	3.12
72	8.810	8.597	35A72	23/32	2.56	35B72	3/4	1-1/2	2-1/4	1	3.42
80	9.770	9.552	35A80	23/32	3.16	35B80	3/4	1-1/2	2-1/4	1	3.82
84	10.250	10.029	35A84	23/32	3.26	35B84	3/4	1-1/2	2-1/4	1	4.24
96	11.680	11.461	35A96	23/32	4.64	35B96	3/4	1-1/2	2-1/4	1	5.16
112	13.590	13.371	35A112	23/32	5.05	35B112	3/4	1-1/2	2-1/4	1	6.70



Type A



Type B



Type B

H - Denotes hardened teeth.

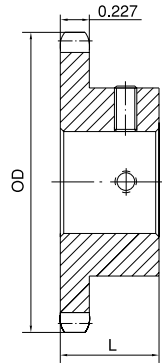
Maximum bores shown, accommodate standard keyway with setscrew positioned over keyway.

\* Hub has recessed groove allowing for chain clearance. GD are as follows:

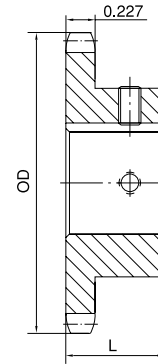
8 Teeth = 0.510in    9 Teeth = 0.635in    10 Teeth = 0.750in  
 11 Teeth = 0.890in    12 Teeth = 1.000in    13 Teeth = 1.125in

## FINISHED BORE No. 41

1/2" Pitch



Type BS



Type BS

### Single Type BS

No. of Teeth	Part No.	OD	L	App. Wt. (Lbs.)	Finished Bores (Includes Keyway and 2 Setscrews)									
9	41BS9H	1.670	7/8	0.20	*1/2	5/8								
10	41BS10H	1.840	7/8	0.25	*1/2	5/8								
11	41BS11H	2.000	7/8	0.32	*1/2	5/8	3/4							
12	41BS12H	2.170	7/8	0.33	*1/2	5/8	3/4	7/8						
13	41BS13H	2.330	7/8	0.43	*1/2	5/8	3/4	7/8	1					
14	41BS14H	2.490	7/8	0.48	*1/2	5/8	3/4	7/8	1					
15	41BS15H	2.650	7/8	0.59	*1/2	5/8	3/4			1				
16	41BS16H	2.810	7/8	0.72		5/8	3/4			1				
17	41BS17H	2.980	1	1.00		5/8	3/4			1				
18	41BS18H	3.140	1	1.10		5/8	3/4			1				
19	41BS19H	3.300	1	1.21		5/8	3/4			1				
20	41BS20H	3.460	1	1.39		5/8	3/4			1				
21	41BS21H	3.620	1	1.77		5/8	3/4			1				
22	41BS22H	3.780	1	1.92		5/8	3/4			1				
23	41BS23H	3.940	1	2.18		5/8	3/4			1				
24	41BS24H	4.100	1	2.24		5/8	3/4			1				
25	41BS25H	4.260	1	2.42		5/8	3/4			1				
26	41BS26H	4.420	1	2.46		5/8	3/4			1				
27	41BS27H	4.580	1	2.52		5/8	3/4			1				
28	41BS28H	4.740	1	2.60		5/8	3/4			1				
30	41BS30H	5.060	1	2.76		5/8	3/4			1				
32	41BS32H	5.380	1	2.92		5/8	3/4			1				
35	41BS35H	5.860	1	3.08		5/8	3/4			1				
36	41BS36H	6.020	1	3.28		5/8	3/4			1				
40	41BS40	6.650	1-1/16	3.52		3/4		1	1-1/8	1-3/16	1-1/4	1-3/8	1-7/16	1-1/2
42	41BS42	6.970	1-1/16	3.68		3/4		1	1-1/8	1-3/16	1-1/4	1-3/8	1-7/16	1-1/2
45	41BS45	7.450	1-1/16	3.94		3/4		1	1-1/8	1-3/16	1-1/4	1-3/8	1-7/16	1-1/2
48	41BS48	7.930	1-1/16	4.68		3/4		1	1-1/8	1-3/16	1-1/4	1-3/8	1-7/16	1-1/2
54	41BS54	8.890	1-1/16	5.44		3/4		1	1-1/8	1-3/16	1-1/4	1-3/8	1-7/16	1-1/2
60	41BS60	9.840	1-1/16	6.54		3/4		1	1-1/8	1-3/16	1-1/4	1-3/8	1-7/16	1-1/2
70	41BS70	11.430	1-3/16	9.28		3/4		1	1-1/8	1-3/16	1-1/4	1-3/8	1-7/16	1-1/2
72	41BS72	11.750	1-3/16	9.38		3/4		1	1-1/8	1-3/16	1-1/4	1-3/8	1-7/16	1-1/2
80	41BS80	13.030	1-3/16	11.28		3/4		1	1-1/8	1-3/16	1-1/4	1-3/8	1-7/16	1-1/2
84	41BS84	13.660	1-3/16	11.94		3/4		1	1-1/8	1-3/16	1-1/4	1-3/8	1-7/16	1-1/2
96	41BS96	15.570	1-3/16	14.51		3/4		1	1-1/8	1-3/16	1-1/4	1-3/8	1-7/16	1-1/2
112	41BS112	18.120	1-3/16	18.81		3/4		1	1-1/8	1-3/16	1-1/4	1-3/8	1-7/16	1-1/2

H - Denotes hardened teeth.

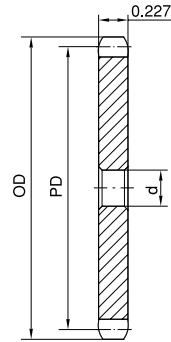
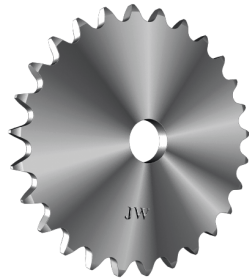
\* - Indicates no keyway (2-1/4" setscrews with 1/2" bore).

Larger bore sizes require hubs of greater diameter.

Keyway centered on line of tooth.

# No. 41 STOCK SPROCKETS

## 1/2" Pitch



Type A

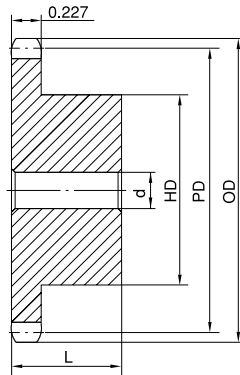
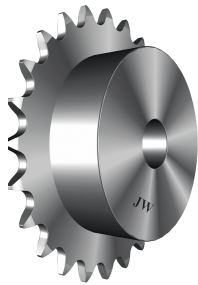
### Single Type A

No. of Teeth	Part No.	OD	PD	d	App. Wt. (Lbs.)	No. of Teeth	Part No.	OD	PD	d	App. Wt. (Lbs.)
15	41A15H	2.650	2.405	5/8	0.28	41	41A41	6.810	6.532	23/32	2.27
16	41A16H	2.810	2.563	5/8	0.34	42	41A42	6.970	6.691	23/32	2.32
17	41A17H	2.980	2.721	5/8	0.36	43	41A43	7.130	6.850	23/32	2.42
18	41A18H	3.140	2.879	5/8	0.44	44	41A44	7.290	7.009	23/32	2.52
19	41A19H	3.300	3.038	5/8	0.46	45	41A45	7.450	7.168	23/32	2.62
20	41A20H	3.460	3.196	5/8	0.52	46	41A46	7.610	7.327	23/32	2.72
21	41A21H	3.620	3.355	5/8	0.60	47	41A47	7.770	7.486	23/32	2.82
22	41A22H	3.780	3.513	5/8	0.66	48	41A48	7.930	7.645	23/32	2.92
23	41A23H	3.940	3.672	5/8	0.72	49	41A49	8.090	7.804	23/32	3.02
24	41A24H	4.100	3.831	5/8	0.82	50	41A50	8.250	7.963	23/32	3.12
25	41A25H	4.260	3.989	5/8	0.88	51	41A51	8.410	8.122	23/32	3.23
26	41A26H	4.420	4.148	5/8	0.94	52	41A52	8.570	8.281	23/32	3.33
27	41A27H	4.580	4.307	5/8	1.00	53	41A53	8.730	8.440	23/32	3.44
28	41A28H	4.740	4.465	5/8	1.08	54	41A54	8.890	8.599	23/32	3.54
29	41A29H	4.900	4.625	5/8	1.14	55	41A55	9.040	8.758	23/32	3.71
30	41A30H	5.060	4.783	19/32	1.20	56	41A56	9.200	8.917	23/32	3.89
31	41A31H	5.220	4.942	19/32	1.32	58	41A58	9.520	9.235	23/32	4.24
32	41A32H	5.380	5.101	19/32	1.44	60	41A60	9.840	9.554	23/32	4.60
33	41A33H	5.540	5.260	19/32	1.52	65	41A65	10.630	10.349	23/32	5.40
34	41A34H	5.700	5.419	19/32	1.61	70	41A70	11.430	11.145	23/32	6.22
35	41A35H	5.860	5.578	19/32	1.70	72	41A72	11.750	11.463	23/32	6.32
36	41A36H	6.020	5.737	19/32	1.84	80	41A80	13.030	12.736	23/32	8.46
37	41A37	6.180	5.896	19/32	1.93	84	41A84	13.660	13.372	23/32	9.12
38	41A38	6.330	6.055	19/32	2.03	90	41A90	14.620	14.327	15/16	10.46
39	41A39	6.490	6.214	19/32	2.12	96	41A96	15.570	15.282	15/16	11.84
40	41A40	6.650	6.373	23/32	2.22	112	41A112	18.120	17.827	15/16	15.84

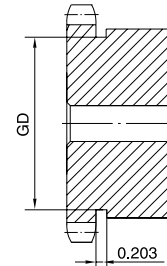
H - Denotes hardened teeth.

# STOCK SPROCKETS No. 41

## 1/2" Pitch



Type B



Type B

### Single Type B

No. of Teeth	Part No.	OD	PD	d		HD	L	App. Wt. (Lbs.)	No. of Teeth	Part No.	OD	PD	d		HD	L	App. Wt. (Lbs.)
				Min.	Max.								Min.	Max.			
7	41B7H	1.340	1.152	3/8	3/8	3/4*	7/8	0.10	37	41B37	6.180	5.896	5/8	2-3/8	3-1/4	1	3.48
8	41B8H	1.510	1.307	1/2	1/2	63/64*	7/8	0.19	38	41B38	6.330	6.055	5/8	2-3/8	3-1/4	1	3.67
9	41B9H	1.670	1.462	1/2	5/8	1-1/8*	7/8	0.20	39	41B39	6.490	6.214	5/8	2-3/8	3-1/4	1	3.87
10	41B10H	1.840	1.618	1/2	3/4	1-1/4*	7/8	0.27	40	41B40	6.650	6.373	3/4	2-3/8	3-1/4	1-1/16	4.06
11	41B11H	2.000	1.775	1/2	7/8	1-7/16*	7/8	0.35	41	41B41	6.810	6.532	3/4	2-3/8	3-1/2	1-1/16	4.08
12	41B12H	2.170	1.932	1/2	15/16	1-9/16*	7/8	0.44	42	41B42	6.970	6.691	3/4	2-3/8	3-1/2	1-1/16	4.10
13	41B13H	2.330	2.089	1/2	1	1-9/16	7/8	0.50	43	41B43	7.130	6.850	3/4	2-3/8	3-1/2	1-1/16	4.12
14	41B14H	2.490	2.247	1/2	1-1/4	1-3/4	7/8	0.57	44	41B44	7.290	7.009	3/4	2-3/8	3-1/2	1-1/16	4.15
15	41B15H	2.650	2.405	1/2	1-5/16	1-29/32	7/8	0.72	45	41B45	7.450	7.168	3/4	2-3/8	3-1/2	1-1/16	4.18
16	41B16H	2.810	2.563	5/8	1-3/8	2-1/16	7/8	0.91	46	41B46	7.610	7.327	3/4	2-3/8	3-1/2	1-1/16	4.42
17	41B17H	2.980	2.721	5/8	1-1/2	2-15/64	1	1.09	47	41B47	7.770	7.486	3/4	2-3/8	3-1/2	1-1/16	4.66
18	41B18H	3.140	2.879	5/8	1-5/8	2-3/8	1	1.25	48	41B48	7.930	7.645	3/4	2-3/8	3-1/2	1-1/16	4.92
19	41B19H	3.300	3.038	5/8	1-3/4	2-15/32	1	1.49	49	41B49	8.090	7.804	3/4	2-3/8	3-1/2	1-1/16	5.04
20	41B20H	3.460	3.196	5/8	1-7/8	2-3/4	1	1.64	50	41B50	8.250	7.963	3/4	2-3/8	3-1/2	1-1/16	5.16
21	41B21H	3.620	3.355	5/8	1-7/8	2-7/8	1	1.81	51	41B51	8.410	8.122	3/4	2-3/8	3-1/2	1-1/16	5.30
22	41B22H	3.780	3.513	5/8	2	3	1	1.93	52	41B52	8.570	8.281	3/4	2-3/8	3-1/2	1-1/16	5.42
23	41B23H	3.940	3.672	5/8	2-1/4	3-3/16	1	2.25	53	41B53	8.730	8.440	3/4	2-3/8	3-1/2	1-1/16	5.53
24	41B24H	4.100	3.831	5/8	2-1/4	3-1/4	1	2.33	54	41B54	8.890	8.599	3/4	2-3/8	3-1/2	1-1/16	5.68
25	41B25H	4.260	3.989	5/8	2-1/4	3-1/4	1	2.46	55	41B55	9.040	8.758	3/4	2-3/8	3-1/2	1-1/16	5.86
26	41B26H	4.420	4.148	5/8	2-1/4	3-1/4	1	2.50	56	41B56	9.200	8.917	3/4	2-3/8	3-1/2	1-1/16	6.04
27	41B27H	4.580	4.307	5/8	2-1/4	3-1/4	1	2.56	58	41B58	9.520	9.235	3/4	2-3/8	3-1/2	1-1/16	6.40
28	41B28H	4.740	4.465	5/8	2-1/4	3-1/4	1	2.64	60	41B60	9.840	9.554	3/4	2-3/8	3-1/2	1-1/16	6.78
29	41B29H	4.900	4.625	5/8	2-1/4	3-1/4	1	2.72	65	41B65	10.630	10.349	3/4	2-3/4	4	1-3/16	8.10
30	41B30H	5.060	4.783	5/8	2-1/4	3-1/4	1	2.80	70	41B70	11.430	11.145	3/4	2-3/4	4	1-3/16	9.54
31	41B31H	5.220	4.942	5/8	2-1/4	3-1/4	1	2.88	72	41B72	11.750	11.463	3/4	2-3/4	4	1-3/16	9.64
32	41B32H	5.380	5.101	5/8	2-1/4	3-1/4	1	2.96	80	41B80	13.030	12.736	3/4	2-3/4	4	1-3/16	11.54
33	41B33H	5.540	5.260	5/8	2-1/4	3-1/4	1	3.01	84	41B84	13.660	13.372	3/4	2-3/4	4	1-3/16	12.20
34	41B34H	5.700	5.419	5/8	2-1/4	3-1/4	1	3.06	96	41B96	15.570	15.282	1	2-3/4	4	1-3/16	14.86
35	41B35H	5.860	5.578	5/8	2-3/8	3-1/4	1	3.12	112	41B112	18.120	17.827	1	2-3/4	4	1-3/16	19.16
36	41B36H	6.020	5.737	5/8	2-3/8	3-1/4	1	3.30									

H - Denotes hardened teeth.

Maximum bores shown, accommodate standard keyway with setscrew positioned over keyway.

\* Hub has recessed groove allowing for chain clearance. GD are as follows:

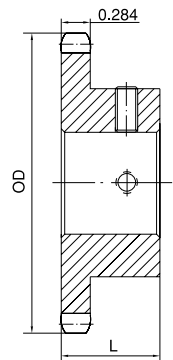
6 Teeth = 0.450in    7 Teeth = 0.616in    8 Teeth = 0.776in    9 Teeth = 0.937in

10 Teeth = 1.076in    11 Teeth = 1.260in    12 Teeth = 1.433in

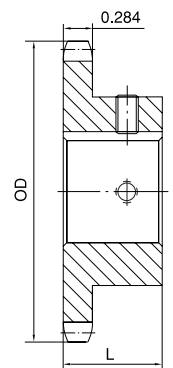
# No. 40 FINISHED BORE

1/2" Pitch  
Single Type BS

No. of Teeth	Part No.	OD	L	App. Wt. (Lbs.)	Finished Bores (Includes Keyway and 2 Setscrews)
9	40BS9H	1.670	7/8	0.16	*1/2 5/8
10	40BS10H	1.840	7/8	0.24	*1/2 5/8 3/4
11	40BS11H	2.000	7/8	0.28	*1/2 5/8 3/4 7/8
12	40BS12H	2.170	7/8	0.34	*1/2 5/8 3/4 7/8 1
13	40BS13H	2.330	7/8	0.45	*1/2 5/8 3/4 7/8 1
14	40BS14H	2.490	7/8	0.51	*1/2 5/8 3/4 7/8 1 1-1/8
15	40BS15H	2.650	7/8	0.53	*1/2 5/8 3/4 7/8 1 1-1/8 1-3/16 1-1/4
16	40BS16H	2.810	7/8	0.66	5/8 3/4 7/8 1 1-1/8 1-3/16 1-1/4
17	40BS17H	2.980	1	0.88	5/8 3/4 7/8 1 1-1/8 1-3/16 1-1/4
18	40BS18H	3.140	1	1.03	5/8 3/4 7/8 1 1-1/8 1-3/16 1-1/4 1-3/8 1-7/16 1-1/2
19	40BS19H	3.300	1	1.17	5/8 3/4 7/8 1 1-1/8 1-3/16 1-1/4 1-3/8 1-7/16 1-1/2
20	40BS20H	3.460	1	1.33	5/8 3/4 7/8 1 1-1/8 1-3/16 1-1/4 1-3/8 1-7/16 1-1/2
21	40BS21H	3.620	1	1.53	5/8 3/4 7/8 1 1-1/8 1-3/16 1-1/4 1-3/8 1-7/16 1-1/2
22	40BS22H	3.780	1	1.66	5/8 3/4 7/8 1 1-1/8 1-3/16 1-1/4 1-3/8 1-7/16 1-1/2
23	40BS23H	3.940	1	1.92	5/8 3/4 7/8 1 1-1/8 1-3/16 1-1/4 1-3/8 1-7/16 1-1/2
24	40BS24H	4.100	1	2.10	5/8 3/4 7/8 1 1-1/8 1-3/16 1-1/4 1-3/8 1-7/16 1-1/2
25	40BS25H	4.260	1	2.22	5/8 3/4 7/8 1 1-1/8 1-3/16 1-1/4 1-7/16 1-1/2
26	40BS26H	4.420	1	2.34	5/8 3/4 7/8 1 1-1/8 1-3/16 1-1/4 1-7/16 1-1/2
27	40BS27H	4.580	1	2.42	5/8 3/4 7/8 1 1-1/8 1-3/16 1-1/4 1-7/16 1-1/2
28	40BS28H	4.740	1	2.50	5/8 3/4 7/8 1 1-1/8 1-3/16 1-1/4 1-7/16 1-1/2
29	40BS29H	4.900	1	2.60	5/8 3/4 7/8 1 1-1/8 1-3/16 1-1/4 1-7/16 1-1/2
30	40BS30H	5.060	1	2.70	5/8 3/4 7/8 1 1-1/8 1-3/16 1-1/4 1-7/16 1-1/2
31	40BS31H	5.220	1	2.88	5/8 3/4 7/8 1 1-1/8 1-3/16 1-1/4 1-7/16 1-1/2
32	40BS32H	5.380	1	3.00	5/8 3/4 7/8 1 1-1/8 1-3/16 1-1/4 1-7/16 1-1/2
33	40BS33H	5.540	1	3.03	5/8 3/4 7/8 1 1-1/8 1-3/16 1-1/4 1-7/16 1-1/2
34	40BS34H	5.700	1	3.11	5/8 3/4 7/8 1 1-1/8 1-3/16 1-1/4 1-7/16 1-1/2
35	40BS35H	5.860	1	3.20	5/8 3/4 7/8 1 1-1/8 1-3/16 1-1/4 1-7/16 1-1/2
36	40BS36H	6.020	1	3.39	5/8 3/4 7/8 1 1-1/8 1-3/16 1-1/4 1-7/16 1-1/2
37	40BS37	6.180	1	3.45	5/8 3/4 7/8 1 1-1/8 1-3/16 1-1/4 1-7/16 1-1/2
38	40BS38	6.330	1	3.50	5/8 3/4 7/8 1 1-1/8 1-3/16 1-1/4 1-7/16 1-1/2
39	40BS39	6.490	1	4.00	5/8 3/4 7/8 1 1-1/8 1-3/16 1-1/4 1-7/16 1-1/2
40	40BS40	6.650	1-1/8	4.28	3/4 7/8 1 1-1/8 1-3/16 1-1/4 1-7/16 1-1/2
41	40BS41	6.810	1-1/8	4.58	3/4 7/8 1 1-1/8 1-3/16 1-1/4 1-7/16 1-1/2
42	40BS42	6.970	1-1/8	4.64	3/4 7/8 1 1-1/8 1-3/16 1-1/4 1-7/16 1-1/2
43	40BS43	7.130	1-1/8	4.80	3/4 7/8 1 1-1/8 1-3/16 1-1/4 1-7/16 1-1/2
44	40BS44	7.290	1-1/8	4.96	3/4 7/8 1 1-1/8 1-3/16 1-1/4 1-7/16 1-1/2
45	40BS45	7.450	1-1/8	5.06	3/4 7/8 1 1-1/8 1-3/16 1-1/4 1-7/16 1-1/2
46	40BS46	7.610	1-1/8	5.19	3/4 7/8 1 1-1/8 1-3/16 1-1/4 1-7/16 1-1/2
47	40BS47	7.770	1-1/8	5.26	3/4 7/8 1 1-1/8 1-3/16 1-1/4 1-7/16 1-1/2
48	40BS48	7.930	1-1/8	5.66	3/4 7/8 1 1-1/8 1-3/16 1-1/4 1-7/16 1-1/2
49	40BS49	8.090	1-1/8	5.72	3/4 7/8 1 1-1/8 1-3/16 1-1/4 1-7/16 1-1/2
50	40BS50	8.250	1-1/8	5.78	3/4 7/8 1 1-1/8 1-3/16 1-1/4 1-7/16 1-1/2
51	40BS51	8.410	1-1/8	5.90	3/4 7/8 1 1-1/8 1-3/16 1-1/4 1-7/16 1-1/2
52	40BS52	8.570	1-1/8	5.94	3/4 7/8 1 1-1/8 1-3/16 1-1/4 1-7/16 1-1/2
53	40BS53	8.730	1-1/8	6.12	3/4 7/8 1 1-1/8 1-3/16 1-1/4 1-7/16 1-1/2
54	40BS54	8.890	1-1/8	6.24	3/4 7/8 1 1-1/8 1-3/16 1-1/4 1-7/16 1-1/2
55	40BS55	9.040	1-1/8	6.66	3/4 7/8 1 1-1/8 1-3/16 1-1/4 1-7/16 1-1/2
56	40BS56	9.200	1-1/8	6.71	3/4 7/8 1 1-1/8 1-3/16 1-1/4 1-7/16 1-1/2
57	40BS57	9.360	1-1/8	6.94	3/4 7/8 1 1-1/8 1-3/16 1-1/4 1-7/16 1-1/2
58	40BS58	9.520	1-1/8	7.17	3/4 7/8 1 1-1/8 1-3/16 1-1/4 1-7/16 1-1/2
59	40BS59	9.680	1-1/8	7.38	3/4 7/8 1 1-1/8 1-3/16 1-1/4 1-7/16 1-1/2
60	40BS60	9.840	1-1/8	7.68	3/4 7/8 1 1-1/8 1-3/16 1-1/4 1-7/16 1-1/2
70	40BS70	11.430	1-1/4	10.80	3/4 7/8 1 1-1/8 1-3/16 1-1/4 1-7/16 1-1/2
72	40BS72	11.750	1-1/4	11.30	3/4 7/8 1 1-1/8 1-3/16 1-1/4 1-7/16 1-1/2
80	40BS80	13.030	1-1/4	13.20	3/4 7/8 1 1-1/8 1-3/16 1-1/4 1-7/16 1-1/2
84	40BS84	13.660	1-1/4	13.84	3/4 7/8 1 1-1/8 1-3/16 1-1/4 1-7/16 1-1/2
96	40BS96	15.570	1-1/4	17.44	1 1-1/8 1-3/16 1-1/4 1-7/16 1-1/2
112	40BS112	18.120	1-1/4	22.45	1 1-1/8 1-3/16 1-1/4 1-7/16 1-1/2



Type BS



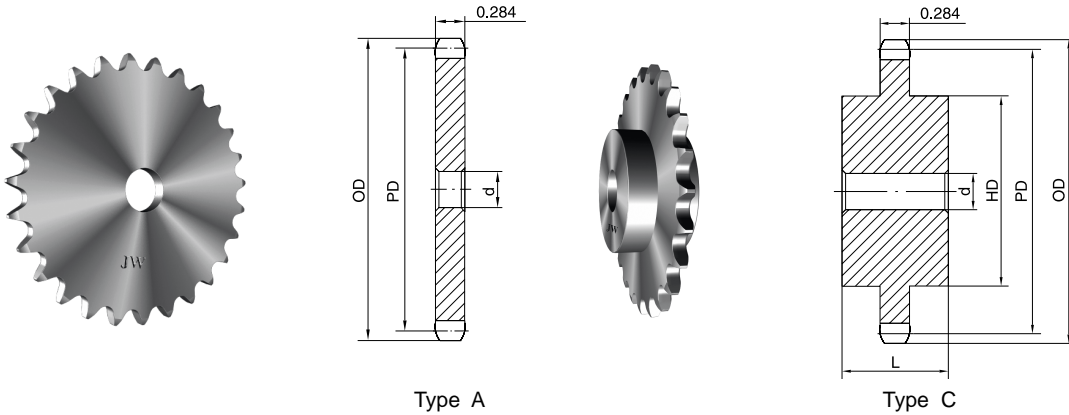
Type BS

H - Denotes hardened teeth.  
 \* - Indicates no keyway (2-1/4" setscrews with 1/2" bore).  
 Larger bore sizes require hubs of greater diameter.  
 Keyway centered on line of tooth.



## STOCK SPROCKETS **No. 40**

**1/2" Pitch**



### Single Type A

No. of Teeth	Part No.	OD	PD	d	App. Wt. (Lbs.)	No. of Teeth	Part No.	OD	PD	d	App. Wt. (Lbs.)
12	40A12H	2.170	1.932	1/2	0.18	40	40A40	6.650	6.373	23/32	2.22
13	40A13H	2.330	2.089	1/2	0.22	41	40A41	6.810	6.532	23/32	2.42
14	40A14H	2.490	2.247	1/2	0.26	42	40A42	6.970	6.691	23/32	2.50
15	40A15H	2.650	2.405	5/8	0.30	43	40A43	7.130	6.850	23/32	2.80
16	40A16H	2.810	2.563	5/8	0.34	44	40A44	7.290	7.009	23/32	2.85
17	40A17H	2.980	2.721	5/8	0.36	45	40A45	7.450	7.168	23/32	3.15
18	40A18H	3.140	2.879	5/8	0.44	46	40A46	7.610	7.327	23/32	3.26
19	40A19H	3.300	3.038	5/8	0.46	47	40A47	7.770	7.486	23/32	3.32
20	40A20H	3.460	3.196	5/8	0.56	48	40A48	7.930	7.645	23/32	3.42
21	40A21H	3.620	3.355	5/8	0.58	49	40A49	8.090	7.804	23/32	3.52
22	40A22H	3.780	3.513	5/8	0.66	50	40A50	8.250	7.963	23/32	3.62
23	40A23H	3.940	3.672	5/8	0.72	51	40A51	8.410	8.122	23/32	3.84
24	40A24H	4.100	3.831	5/8	0.82	52	40A52	8.570	8.281	23/32	4.08
25	40A25H	4.260	3.989	5/8	0.88	53	40A53	8.730	8.440	23/32	4.24
26	40A26H	4.420	4.148	5/8	0.94	54	40A54	8.890	8.599	23/32	4.44
27	40A27H	4.580	4.307	5/8	0.98	55	40A55	9.040	8.758	23/32	4.54
28	40A28H	4.740	4.466	5/8	1.10	56	40A56	9.200	8.917	23/32	4.84
29	40A29H	4.900	4.624	5/8	1.22	57	40A57	9.360	9.076	23/32	5.00
30	40A30H	5.060	4.783	19/32	1.26	58	40A58	9.520	9.236	23/32	5.12
31	40A31H	5.220	4.942	19/32	1.40	59	40A59	9.680	9.395	23/32	5.30
32	40A32H	5.380	5.101	19/32	1.48	60	40A60	9.840	9.554	23/32	5.48
33	40A33H	5.540	5.260	19/32	1.56	65	40A65	10.630	10.349	23/32	6.30
34	40A34H	5.700	5.419	19/32	1.64	70	40A70	11.430	11.145	23/32	7.24
35	40A35H	5.860	5.578	19/32	1.70	72	40A72	11.750	11.463	23/32	7.74
36	40A36H	6.020	5.737	19/32	1.84	80	40A80	13.030	12.736	23/32	9.30
37	40A37	6.180	5.896	19/32	1.92	84	40A84	13.660	13.372	23/32	10.20
38	40A38	6.330	6.054	19/32	2.00	96	40A96	15.570	15.281	15/16	12.15
39	40A39	6.490	6.214	19/32	2.02	112	40A112	18.120	17.828	15/16	20.00

### Single Type C

No. of Teeth	Part No.	OD	PD	d		HD	L	App. Wt. (Lbs.)
				Min.	Max.			
12	40C12	2.170	1.932	1/2	1	1-39/64*	1-1/2	0.75
13	40C13	2.330	2.089	1/2	1-1/16	1-3/4*	1-1/2	0.94
14	40C14	2.490	2.247	1/2	1-1/8	1-11/16	1-1/2	0.91
15	40C15	2.650	2.405	1/2	1-1/4	1-7/8	1-1/2	1.19
16	40C16	2.810	2.563	1/2	1-3/8	2	1-1/2	1.34
17	40C17	2.980	2.721	5/8	1-7/16	2-1/8	1-1/2	1.50
18	40C18	3.140	2.879	5/8	1-1/2	2-5/16	1-1/2	1.80

H - Denotes hardened teeth.

Maximum bores shown, accommodate standard keyway with setscrew positioned over keyway.

\* Hub has recessed groove allowing for chain clearance. Groove depth is the same as Single Type B; see page 14.