

# JOINT WAY INTERNATIONAL

In 1990, Mr. Huaxin Lou established Hangzhou Joint Way Transmission Machinery Co., Ltd. Having personally worked to set up over 100 power transmission factories in China, this venture to service international customers proved a natural step.

As a young and vibrant company, Hangzhou Joint Way quickly established itself in the world market. Offering customers quality products along with reliable service, Hangzhou Joint Way became a vital source of power transmission products. Today, JointWay's reputation is highly respected among customers throughout Europe, Canada, Japan and Australia.

In 1995, Joint Way International was established in Portland, Oregon. JointWay's objective was to offer

U.S. customers the same satisfaction enjoyed by its customers abroad. In 1998, to meet the growing demand of its U.S. customers, JointWay set up its warehousing facility in Portland.

JointWay ensures every single item sold to its customers is of the highest quality. All JointWay manufacturers are ISO-9002 certified. You can see the pride we take in our products, because every item is stamped with JW. Those two letters represent unquestionable guarantees in quality and service.

Meeting your exacting demands is JointWay's primary objective. As JointWay continues to grow, we understand our greatest success is derived from your satisfaction. We believe we can earn your trust by offering you quality products and reliable service.



# CONTENTS

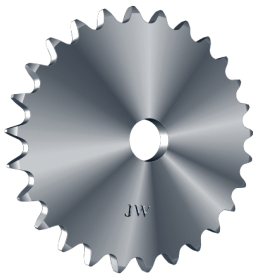
I	STANDARD SPROCKET and CHAIN TYPES	2 - 3
II	SPROCKET NOMENCLATURE	4
III	KEYWAY SPECIFICATIONS	5
A	STOCK SPROCKETS and FINISHED BORE	6 - 4 2
A	STAINLESS STEEL SPROCKETS	4 3 - 4 7
B	WELD-ON SPROCKETS	4 8 - 5 2
B	WELD-ON HUBS	5 3 - 5 6
C	TAPER-BUSHED SPROCKETS	5 7 - 7 0
C	TAPER BUSHINGS	71
D	Q-BUSHED SPROCKETS	7 2 - 8 9
D	Q-STYLE BUSHINGS	9 0 - 9 1
E	SPLIT-TAPER-BUSHED SPROCKETS	92-101
E	SPLIT-TAPER BUSHINGS	102-103
F	DOUBLE-SINGLE SPROCKETS	104-106
F	DOUBLE-PITCH SPROCKETS	107-112
F	IDLER SPROCKETS	113
F	INSTANT-SPLIT SPROCKETS	114
G	SHAFT COLLARS	115-117
G	MACHINED GEAR RACK	118
H	ROLLER CHAINS and ATTACHMENTS	119-125
H	STAINLESS STEEL ROLLER CHAINS	126
H	NICKEL PLATED ROLLER CHAINS	127
H	LEAF CHAINS	128-129
H	BRITISH STANDARD ROLLER CHAINS	130
H	AGRICULTURAL ROLLER CHAINS	131
H	WELDED CHAINS and 81X <sup>®</sup> MILL CHAINS	132
H	COMBINATION CHAINS	133-134
H	PINTLE CHAINS	135

# I STANDARD SPROCKET TYPES

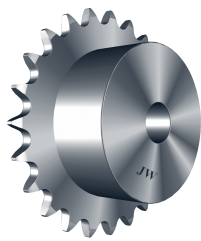
## Stock Sprockets

## Finished Bore

Type A



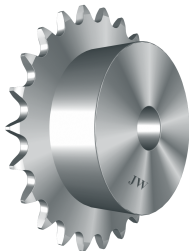
Type B



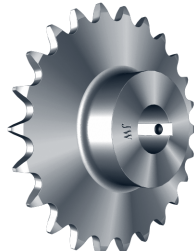
Type C



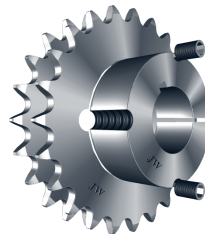
Stainless Steel



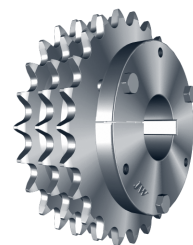
Weld-On



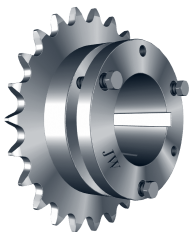
Taper-Bushed



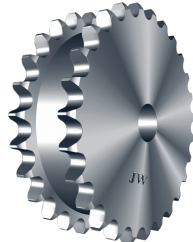
Q-Bushed



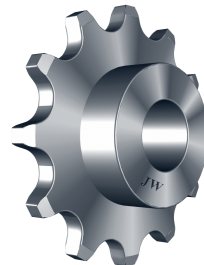
Split-Taper-Bushed



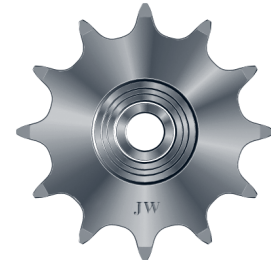
Double-Single



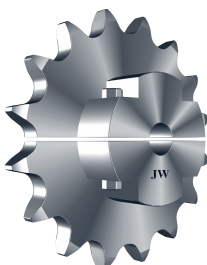
Double-Pitch



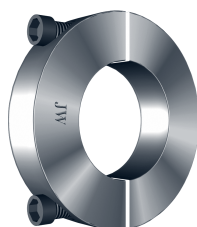
Idler



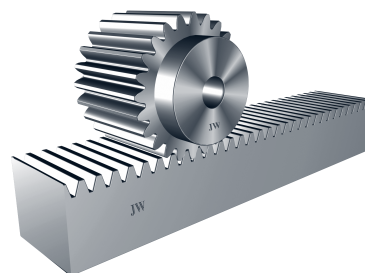
Instant-Split



Shaft Collar



Machined Gear Rack



## I STANDARD CHAIN TYPES

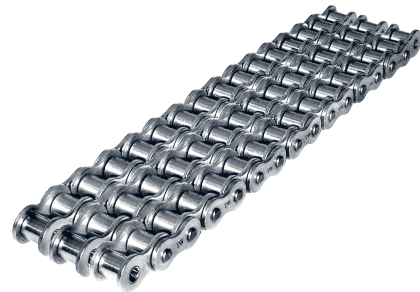
Single Strand



Double Strand



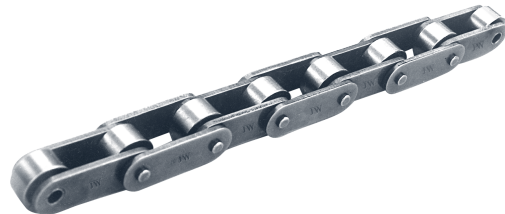
Triple Strand



Double-Pitch



Oversize Roller



81X®



Leaf



Welded



Combination

